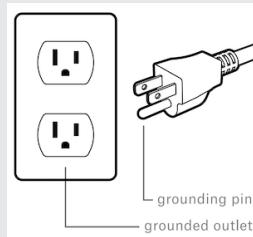


Step 1: Make Connections

A. Connect the tool cable to the Gen IV Controller



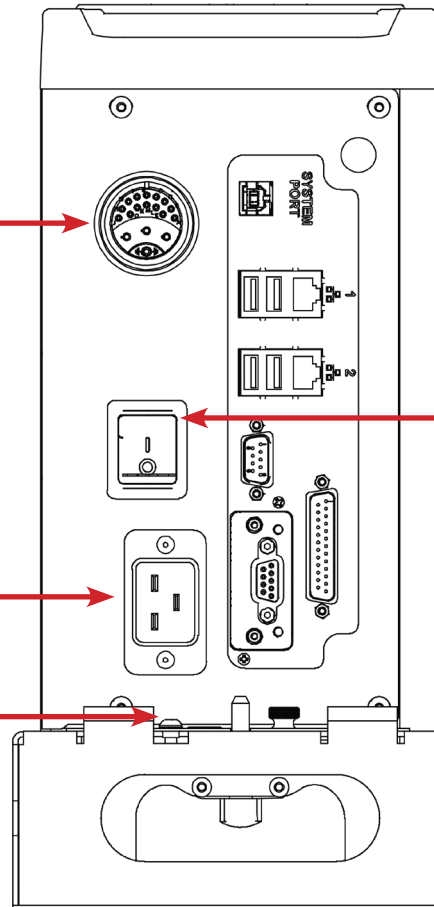
B. Connect the power cord.



C. Connect the Redundant Earth ground (required).



Consult manual for further details on proper grounding of controller if needed.



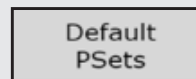
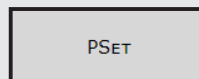
**Step 2:
Power on the
Controller**

Step 3: Import Default PSets



RUN	PSET
JOB	RESULTS
CONTROLLER	ACCESSORIES
DIAGNOSTICS	LOGIN
ADVANCED	STATISTICS

On the Controller's Main Display Menu press



This

will import three default PSets that can now be edited. More PSets can be added by using the Add and Edit buttons.



Note: When connecting through the web browser interface, this process is the same. Refer to the Gen IV controller manual for connection instructions. For the complete Gen IV manual go to www.aimco-global.com/manuals.



AIMCO Technical Support Call Guide

Service/Repair			
Service Training	Steve Shepard Direct: (503) 262-3475 (503) 254-6600, ext. 175 (800) 852-1368, ext. 175	Ken Maio Direct: (503) 262-3406 (503) 254-6600, ext. 206 (800) 852-1368, ext. 206	
Service/Repair AcraDyne Tools	Gregg Walters (503) 262-3420 (503) 254-6600, ext. 354 (800) 852-1368, ext. 354	Kent Wall Direct: (503) 262-3447 (503) 254-6600, ext. 147 (800) 852-1368, ext. 147	
Service/Repair Electronics	Greg Charland Direct: (503) 262-3497 (503) 254-6600, ext. 207 (800) 852-1368, ext. 207	Mike Sims (503) 254-6600, ext. 208 (800) 852-1368, ext. 208	
Service/Repair Pneumatic Tools	Gregg Walters (503) 262-3420 (503) 254-6600, ext. 354 (800) 852-1368, ext. 354	Kent Wall Direct: (503) 262-3447 (503) 254-6600, ext. 147 (800) 852-1368, ext. 147	
Technical Assistance			
AcraDyne Tool Performance and Specifications	Steve Shepard Direct: (503) 262-3475 (503) 254-6600, ext. 175 (800) 852-1368, ext. 175	Dennis Frey (503) 254-6600, ext. 176 (800) 852-1368, ext. 176	Ken Maio Direct: (503) 262-3406 (503) 254-6600, ext. 206 (800) 852-1368, ext. 206
Electronics Performance and Specifications			
Pneumatic Tool Performance and Specifications			