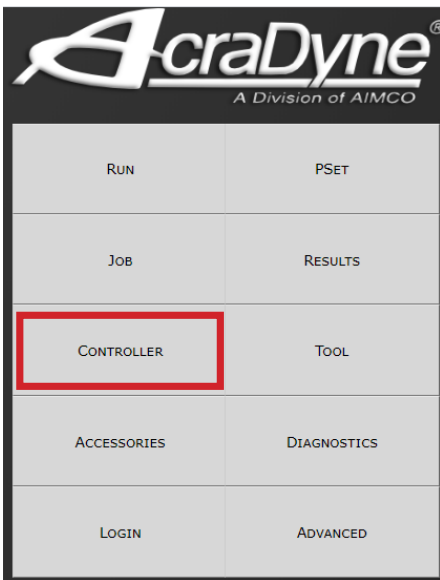
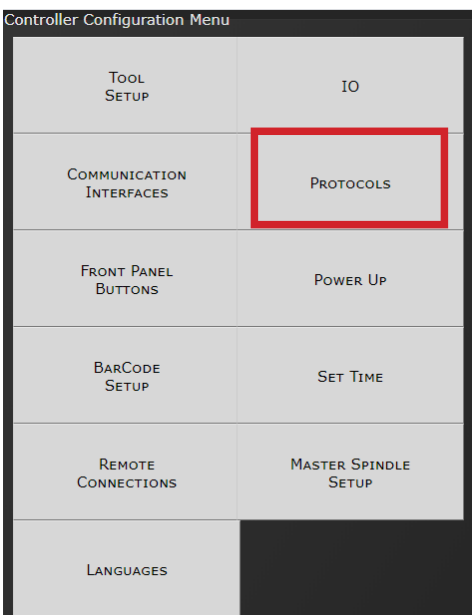


The Gen IV controller uses the FTP client to transfer rundown information to an FTP server. Each new rundown is sent as a single CSV file as the rundown occurs. If there is a network disruption, rundowns will be saved and transferred when the network connection is restored. Two CSV file formats are supported.

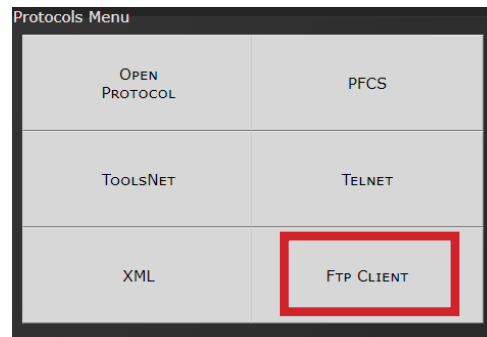
From the main menu, select Controller.



Select Protocols.



Then select FTP Client.

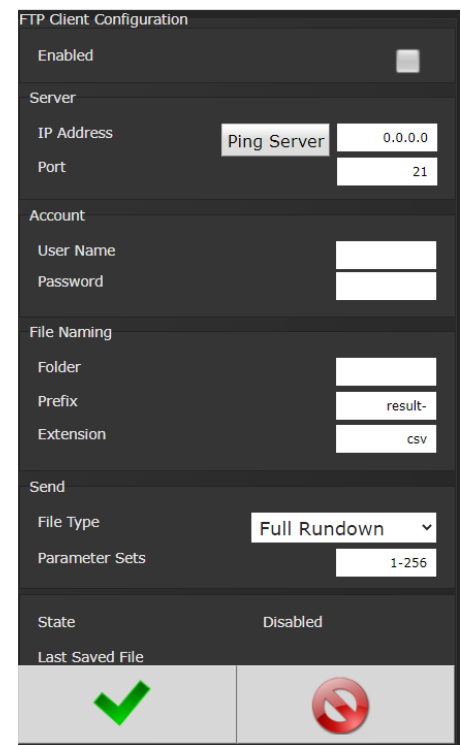


Connection with the Server

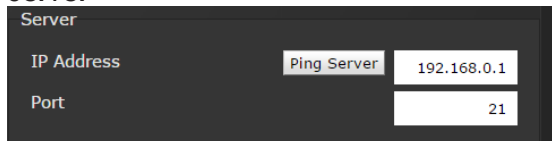
Once configured the controller will attempt to maintain a connection with the server. If the controller fails to connect with the server, it will try to reconnect every sixty seconds. If an established connection is lost the controller attempt to reconnect in five seconds, if that connection fails it reverts to attempting every sixty seconds. If the controller FTP client configuration is changed the connection is closed and a new connection is attempted immediately, if that connection fails it reverts to attempting every sixty seconds.

Configuration

The FTP client feature can be enabled or disabled by selecting the "Enabled" check box. If it is disabled, it will not connect with an FTP server.



Server



The FTP server address and port number are entered in the server setup section. The default port number is 21 if your server uses a different port it should be entered here. The "Ping Server" button can be used to check the network connection from the controller to the FTP server.

Account



The controller will login to the FTP server with the provided account information. If the User name is left blank the controller will login as anonymous.

- USER anonymous
- PASS anonymous@

File Location and Naming

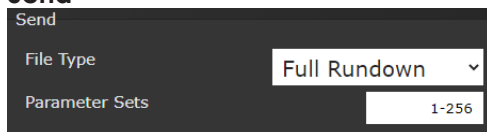


If a Folder name is provided, the controller will change to that working directory by issuing a "CWD" command to the FTP server. The controller will not create the folder if it is missing. If folder is not provided, all files will be saved to the FTP default directory.

The saved file name is based on the unique id generated for each saved rundown. The id starts at 1 and increments by 1 to a max of 4294967295 (at which point it will start back at 1). Each detailed rundown file name is generated by combining "Prefix" + ID + "." + "Extension". By default, a rundown with an ID of 123 will be saved as "result-123.csv".

All files are transmitted as binary type in passive mode.

Send



- **File Type:** The controller can send a CSV file in two formats:

1. "Full Rundown" contains all the details of the rundown. This is the same as saving a detailed rundown from the results screen.
2. "QualityWorX File" is a simplified format for the QualityWorX data collection system.

• Parameter Sets

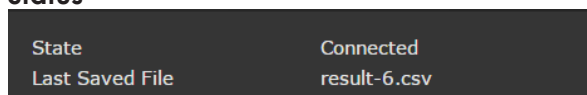
By default, the controller will send files for all parameter sets. The list of parameter sets to send can be edited to a specific few. The list is specified as a range, multiple ranges or individual parameter sets.

Examples

- "1-2,4-256" will send all except parameter set 3
- "1,3,5,10-256" will send not send 2, 4, 6, 7, 8 or 9
- "1" will only send parameter set 1
- "1,2" will only send parameter sets 1 and 2

Rundowns are marked for transmission to the FTP server as the rundown occurs. For a rundown to get marked for transmission, the FTP client protocol needs to be enabled and the parameter set needs to be included in the send list at the time the rundown occurred. Changing these after a rundown has occurred will not cause old rundowns to be transmitted.

Status



The connection state is indicated on the configuration screen along with the last rundown file that was saved to the FTP server. The possible states are list below.

State	Description
Disabled	The FTP client option is disabled
Unconnected	Not currently connected to an FTP server
Connected	Currently connected to an FTP server
Connecting	Attempting to connect to an FTP server
Logging In	Sending account information
Changing Folder	Changing the working directory
Sending Rundown	Sending a rundown file

There is also an assignable output that will indicate a rundown has been saved to the FTP server. This can be monitored by any I/O device connected to the controller. See "Rundown Saved to FTP Server" in the assignable I/O section of the Gen IV user manual.

