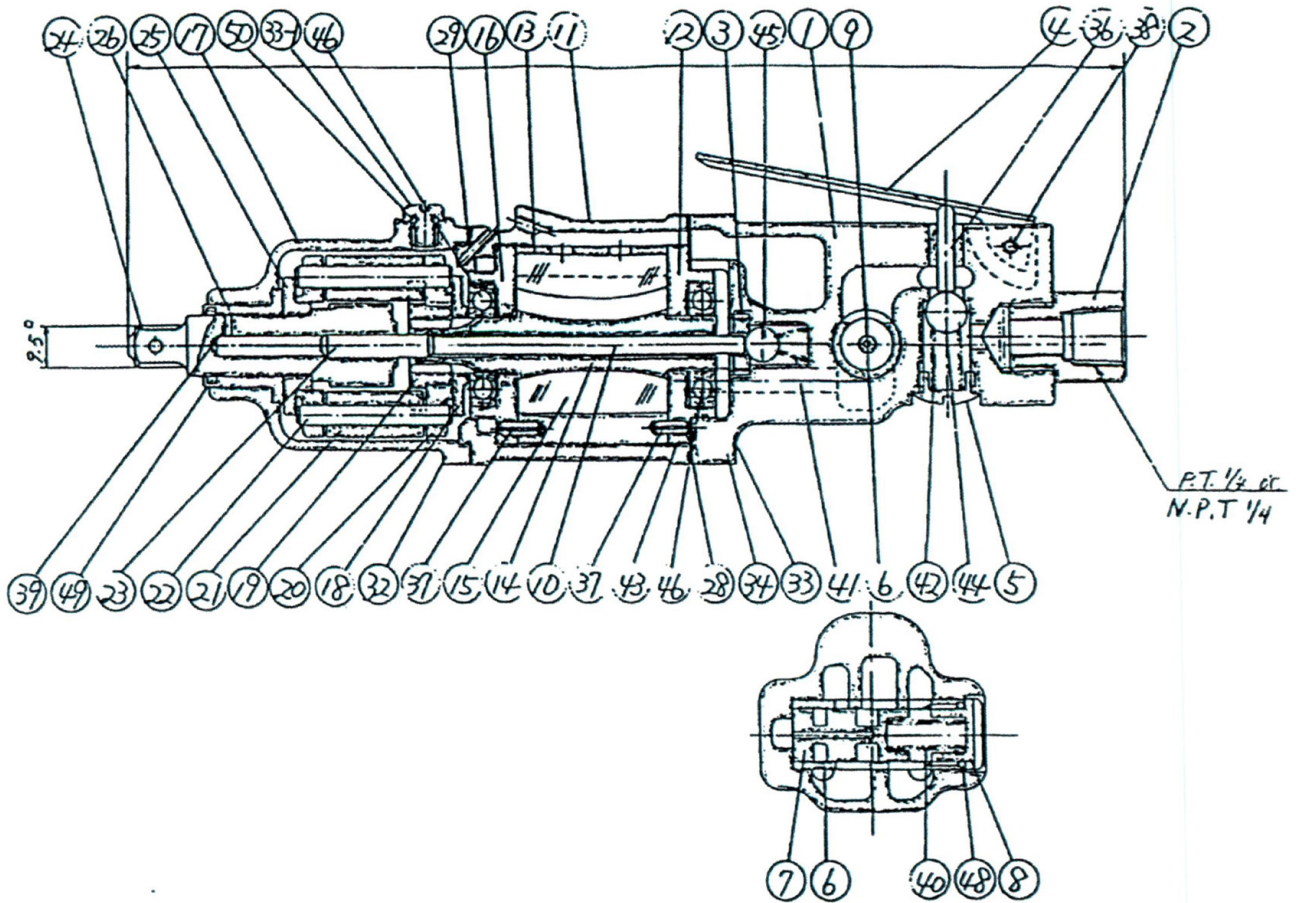


UW-ST6SSHK IMPACT WRENCH

EXPLODED VIEW



PARTS LIST — FOR REFERENCE ONLY

Index Number	Part Number	Description	Qty.	Index Number	Part Number	Description	Qty.	Index Number	Part Number	Description	Qty.
1	021-014-5	Handle	1	20	018-312-1	Hammer Cage	1	40	976-167-0	Spring (7.5 x 20) (0.7)	1
2	180-091-6	Air Inlet Bushing	1	21	018-313-1	Hammer	2	41	977-015-0	Cone Spring (4 x 7.5 x 12)	1
3	553-103-1	Valve Rod Bushing	1	22	018-317-1	Hammer Pin	2	42	977-154-0	Cone Spring (7 x 7.5 x 17)	1
4	500-107-1	Valve Lever	1	23	044-318-1	Pilot Pin	1	43	980-008-0	Round Head Notch (2.4)	1
5	201-108-1	Valve Plug	1	24	018-319-1	Anvil (O) OR	1	44	981-030-0	Ball (3/8)	1
6	021-210-5	Reverse Valve	1		143-319-1	Anvil (P)	1	45	981-208-0	Ball (5/16)	1
7	021-211-5	Reverse Valve Bushing	1	25	021-326-1	Hammer Cage Collar	1	46	982-403-0	Ball Bearing (EE4)	2
8	021-214-5	Reverse Valve Cover	1	26	018-328-1	Anvil Bushing	1	48	990-911-0	O-Ring (SNS-12)	1
9	021-225-5	Subsidiary Valve Body	1	28	020-852-1	Rear Packing	1	49	993-033-0	Felt Ring (14 x 18 x 1.5)	1
10	021-105-5	Operating Rod	1	29	018-857-1	Front Packing	1	50	990-003-0	O-Ring (P5)	1
11	020-025-1	Casing	1	32	947-173-0	Half Head Bolt (M5 x 73)	4				
12	019-285-7	Rear Plate	1	33	960-036-0	Hexagon Nut (1-M5)	4				
13	019-286-7	Cylinder	1	33-1	945-962-0	Hexagon Round Head Bolt (M6 x 6)	1				
14	021-287-1	Rotor	1	34	962-008-0	Spring Washer (2-5S)	4				
15	018-288-1	Blade	6	36	970-321-0	Pin (H) (4 x 21)	1				
16	026-289-7	Front Plate	1	37	973-110-0	Roll Pin (3 x 10)	2				
17	026-028-3	Hammer Casing	1	38	973-124-0	Roll Pin (3 x 24)	1				
18	018-310-1	Anvil Rear Spacer	1	39	973-006-0	Roll Pin (2 x 6)	1				
19	018-311-1	Hammer Cam	1								

FOOTNOTES



10000 SE PINE
 PORTLAND, OR 97216
 503-254-6600
 FAX 503-255-2615

When ordering spare parts, please specify
 tool type, part number, and description.