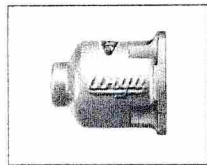


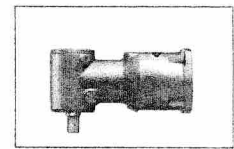
UW-9SS(K), UW-9CS(K) IMPACT WRENCHES

EXPLODED VIEW

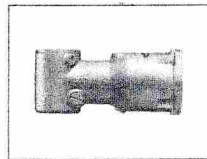
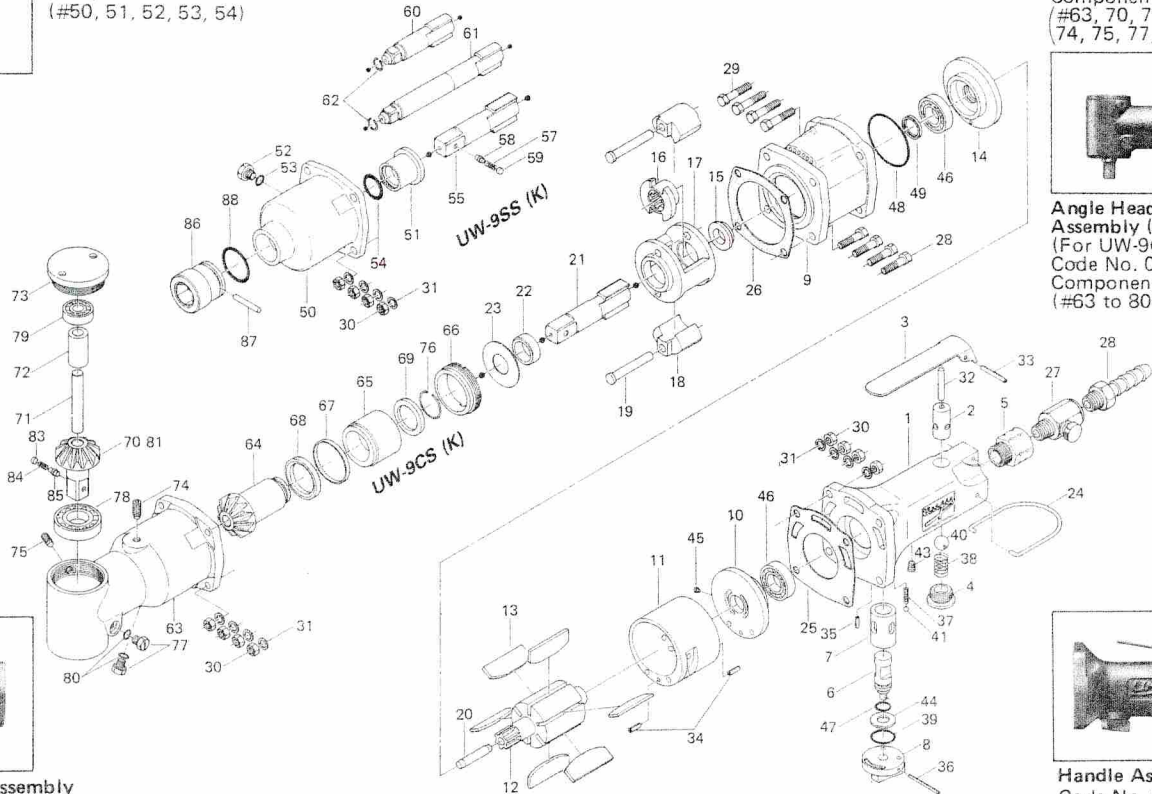


Hammer Casing Assembly
(For UW-9SS)
Code No. 042-007-1
Components
(#50, 51, 52, 53, 54)

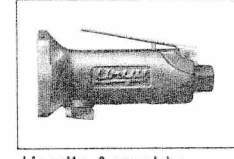
Angle Head Casing Assembly (A)
(For UW-9CS)
Code No. 043-882-1
Components
(#63, 70, 71, 72, 73, 74, 75, 77, 78, 79, 80)



Angle Head Casing Assembly (B)
(For UW-9CS)
Code No. 043-883-1
Components
(#63 to 80)



Hammer Casing Assembly
(For UW-9CS)
Code No. 043-007-1
Components
(#63, 74, 75, 77, 80)



Handle Assembly
Code No. 043-002-1
Components
(#1, 2, 3, 4, 6, 7, 8, 32, 33, 35, 36, 37, 38, 39, 40, 41, 43, 44, 47.)

Handle Assembly Components are marked with "O".
Hammer Casing Assembly (for UW-9SS) components are marked with "x".
Hammer Casing Assembly (for UW-9CS) components are marked with "Δ".
Angle Head Casing Assembly (A) (for UW-9CS) components are marked with "▲".
Angle Head Casing Assembly (B) (for UW-9CS) components are marked with "■".

PARTS LIST

Index No.	Code No.	Parts Name	Quantity	Index No.	Code No.	Parts Name	Quantity	Index No.	Code No.	Parts Name	Quantity
# 1	043-011-2	○ Handle	1	#40	981-210-0	○ Ball (3/8)	1	#71	043-431-1	● Driven Gear Spindle	1
# 2	063-102-1	○ Valve Bushing	1	#41	981-003-0	○ Ball (5/32)	1	#72	043-432-1	● Driven Gear Collar	1
# 3	020-107-1	○ Valve Lever	1	#43	966-100-0	○ Allen Head Plug (1/8)	1	#73	043-067-1	● Angle Head Casing Cover	1
# 4	066-108-1	○ Valve Plug	1	#44	975-090-0	○ Spacer (18×9×1.4)	1	#74	953-312-0	▲ Allend Head Flat Point Screw (M6×12)	1
# 5	185-091-1	○ Air Inlet Bushing	1	#45	980-008-0	○ Round Had Notch (2.4)	1	#75	953-308-0	▲ Allend Head Flat Point Screw (M6×8)	1
# 6	043-210-1	○ Reverse Valve	1	#46	982-403-0	○ Ball Bearing (EE-4)	2	#76	978-209-0	■ Snap Ring (21×1.2)	1
# 7	043-211-1	○ Reverse Valve Bushing	1	#47	990-007-0	○ O-Ring (P9)	1	#77	966-005-0	▲ Hexagon Head Plug (M6)	2
# 8	043-212-1	○ Reverse Valve Lever	1	#48	990-035-0	○ O-Ring (P35)	1	#78	982-404-0	● Ball Bearing (EE 5)	1
# 9	043-025-1	○ Casing	1	#49	991-006-0	○ X-Ring (R12)	1	#79	982-015-0	● Ball Bearing (608)	1
#10	041-285-1	○ Rea Plate	1	PARTS FOR UW-9SS				#80	990-003-0	▲ O-Ring (P5)	2
#11	041-286-1	○ Cylinder	1	#50	042-028-1	x Hammer Casing (Steel)	1	#81	157-430-1	○ Driven Gear (P)	1
#12	041-287-1	○ Rotor	1	#51	041-328-1	x Anvil Bushing	1	#83	971-302-0	○ Pin (4×2) ("P" Type)	1
#13	041-288-1	○ Blade	6	#52	966-005-0	x Hexagon Head Plug (M6)	1	#84	976-034-0	○ Spring (3.6×11)	1
#14	041-289-1	○ Front Plate	1	#53	990-003-0	x O-Ring (P5)	1	#85	153-800-2	○ Socket Retainer Pin (Flat Head) ("P" Type)	1
#15	041-310-1	○ Anvil Rear Spacer	1	#54	990-016-0	x O-Ring (P16)	1	PARTS FOR K (Lightweight) TYPE			
#16	041-311-1	○ Hammer Cam	1	#55	153-319-1	○ Anvil (P)	1	(5)	185-091-7	○ Air Inlet Bushing	1
#17	041-312-1	○ Hammer Cage	1	#57	976-034-0	○ Spring (3.6×11)	1	(10)	041-285-7	○ Rear Plate	1
#18	041-313-1	○ Hammer	2	#58	153-800-2	○ Socket Retainer Pin (Flat Head) ("P" Type)	1	(11)	041-286-7	○ Cylinder	1
#19	041-317-1	○ Hammer Pin	2	#59	971-302-0	○ Pin (4×2) ("P" Type)	1	(14)	041-289-7	○ Front Plate	1
#20	041-318-1	○ Pilot Pin	1	#60	154-321-1	○ Anvile (R)	1	(49)	Delete		
#21	041-319-1	○ Anvil (O)	1	#61	155-324-1	○ Extended Anvil (R)	1	(50)	042-028-7	○ Hammer Casing (Aluminum)	1
#22	041-326-1	○ Hammer Cage Bushing	1	#62	978-138-0	○ Snap Ring (13.4×1.8) (R)	1	(54)	993-034-0	○ Felt Ring (16×21×2)	1
#23	041-327-1	○ Anvil Front Spacer	1	PARTS for UW-9SS				ACCESSORIES			
#24	201-790-1	○ Suspension Ring	1	#63	043-028-1	▲ Angle Head Casing	1	#27	932-110-0	○ Air Regulator (U1/4)	1
#25	043-851-1	○ Rear Packing	1	#64	043-420-1	■ Driving Gear	1	#28	940-114-0	○ Air Hose Nipple (NPT1/4×3/8)	1
#26	041-857-1	○ Front Packing	1	#65	043-421-1	■ Driving Gear Bushing	1	#86	900-153-0	○ Hexagon socket (17×31)	1
#28	947-120-0	○ Half Head Bolt (M5×20)	4	#66	043-422-1	■ Driving Gear Bushing Screw	1	#87	971-991-0	○ Pin (3.2×24)	1
#29	947-124-0	○ Half Head Bolt (M5×24)	4	#67	043-423-1	■ Driving Gear Bushing Spacer	1	#88	990-291-0	○ O-Ring (JW17)	1
#30	960-036-0	○ Hexagon Nut (1-M5)	8	#68	043-424-1	■ Driving Gear Spacer (Large)	1				
#31	962-008-0	○ Spring Washer (2-5S)	8	#69	043-425-1	■ Driving Gear Spacer	1				
#32	970-328-0	○ Pin (H) (4×27)	1	#70	043-430-1	■ Driven Gear (O)	1				
#33	973-124-0	○ Roll Pin (3×24)	1								
#34	973-110-0	○ Roll Pin (3×10)	2								
#35	973-108-0	○ Roll Pin (3×8)	1								
#36	973-030-0	○ Roll Pin (2×30)	1								
#37	976-032-0	○ Spring (3.6×13)	1								
#38	976-232-0	○ Spring (9.5×18)	1								
#39	978-200-0	○ Snap Ring (20×1.2)	1								

When ordering spare parts, please specify tool type, code number and part name.

Printed in Japan

URYU SEISAKU, LTD. Osaka, Japan