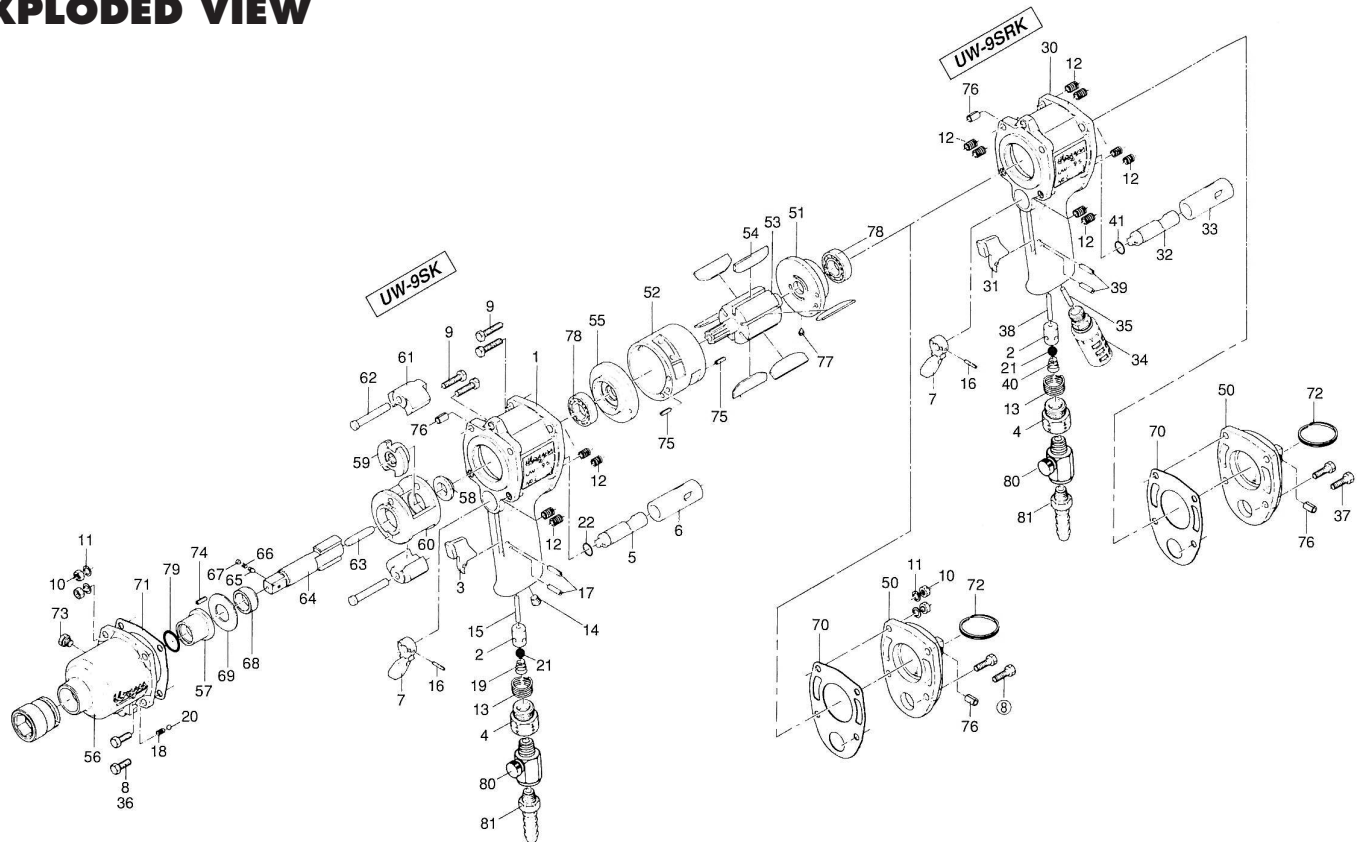


UW-9SK & UW-9SRK IMPACT WRENCHES

EXPLODED VIEW



PARTS LIST — FOR REFERENCE ONLY

Index Number	Part Number	Description	Qty.	Index Number	Part Number	Description	Qty.	Index Number	Part Number	Description	Qty.
PARTS FOR UW-9SK											
041-984-1 Handle Assembly											
Components are marked with ●											
1	041-025-2	Handle	1 ●	2	010-102-1	Valve Bushing	1 ▲	58	041-310-1	Anvil Rear Spacer	1
2	010-102-1	Valve Bushing	1 ●	31	026-107-7	Throttle Trigger	1 ▲	59	041-311-1	Hammer Cam	1
3	018-107-2	Throttle Trigger	1 ●	4	185-091-7	Air Inlet Bushing	1 ▲	60	041-312-1	Hammer Cage	1
4	185-091-7	Air Inlet Bushing	1 ●	32	041-210-7	Reverse Valve	1 ▲	61	041-313-1	Hammer	2
5	041-210-1	Reverse Valve	1 ●	33	041-211-7	Reverse Valve Bushing	1 ▲	62	041-317-1	Hammer Pin	2
6	041-211-1	Reverse Valve Bushing	1 ●	7	041-212-2	Reverse Lever	1	63	041-318-1	Pilot Pin	1
7	041-212-2	Reverse Lever	1	34	031-885-7	Silencer Assembly	1 ▲	64	153-319-1	Anvil (P)	1
8	945-114-0	Allen Head Bolt (M5 x 14)	4	35	041-744-7	Silencer Tube	1 ▲	65	153-800-2	Socket Retainer Pin	1
9	947-122-0	Half Head Bolt (M5 x 22)	4	36	945-116-0	Allen Head Bolt (M5 x 16)	4	66	976-034-0	Spring (3.6 x 11)	1
10	960-036-0	Hexagon Nut (1-M5)	4	37	945-954-0	Hexagon Round Bolt (M5 x 16)	4	67	971-302-0	Pin (4 x 2)	1
11	961-012-0	Flat Washer (5 mm)	4	12	965-011-0	Heli-Sert (M5 x 1.5D)	8 ▲	68	041-326-1	Hammer Cage Bushing	1
12	965-011-0	Heli-Sert (M5 x 1.5D)	4 ●	13	965-073-0	Heli-Sert (UNF5/8) 1	1 ▲	69	041-327-1	Anvil Front Spacer	1
13	965-073-0	Heli-Sert (UNF5/8)	1 ●	38	970-233-0	Pin (H)(3 x 33)	1 ▲	70	041-853-1	Rear Packing	1
14	966-100-0	Allen Head Plug (1/8)	1 ●	16	973-014-0	Roll Pin (2 x 14)	1	71	041-857-1	Front Packing	1
15	970-230-0	Pin (H)(3 x 30)	1 ●	39	973-120-0	Roll Pin (3 x 20)	2 ▲	72	004-790-2	Suspension Ring	1
16	973-014-0	Roll Pin (2 x 14)	1	18	976-032-0	Spring (3.6 x 13)	1	73	945-962-0	Hexagon Head Bolt (M6 x 6)	1
17	973-116-0	Roll Pin (3 x 16)	2 ●	40	977-175-0	Cone Spring (7.8 x 10.3 x 22)	1 ▲	74	973-006-0	Roll Pin (2 x 6)	1
18	976-032-0	Spring (3.6 x 13)	1	20	981-003-0	Ball (5/32)	1	75	973-108-0	Roll Pin (3 x 8)	2
19	977-178-0	Cone Spring (7.8 x 9.8 x 22)	1 ●	21	981-207-0	Ball (9/32)	1 ▲	76	973-338-0	Roll Pin (6 x 8)	2
20	981-003-0	Ball (5/32)	1	41	990-009-1	O-Ring (P10A)	1	77	980-008-0	Round Head Notch (2.4)	1
21	981-207-0	Ball (9/32)	1 ●	COMMON PARTS							
22	990-007-0	O-Ring (P-9)	1	50	041-012-5	Head Cover	1	78	982-403-0	Ball Bearing (EE-4)	2
PARTS FOR UW-9SRK											
041-984-7 Handle Assembly											
Components are marked with ▲											
30	041-025-6	Handle	1 ▲	51	041-285-7	Rear Plate	1	79	993-034-0	Felt Ring (16 x 21 x 2)	1
				52	041-286-7	Cylinder	1				
				53	041-287-1	Rotor	1				
				54	041-288-1	Blade	6				
				55	041-289-7	Front Plate	1				
				56	041-028-7	Hammer Casing	1				
				57	041-328-1	Anvil Bushing	1				

FOOTNOTES



10000 SE PINE
PORTLAND, OR 97216
503-254-6600
FAX 503-255-2615

When ordering spare parts, please specify
tool type, part number, and description.