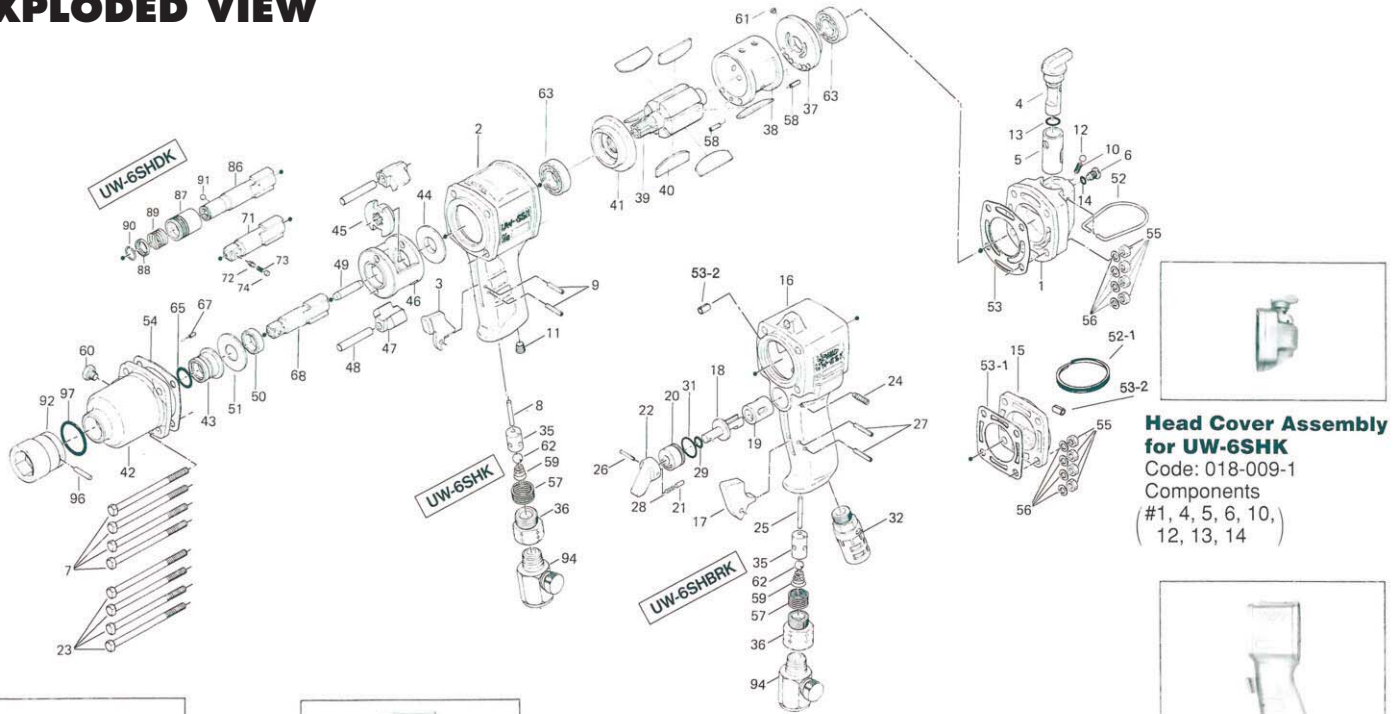


# UW-6SHK, UW-6SHBRK IMPACT WRENCHES

## EXPLODED VIEW



**Hammer Casing Assembly**  
Code: 026-007-3  
Components (#42, 43, 60, 65)

**Handle Assembly for UW-6SHK**  
Code: 018-984-1  
Components (#2, 3, 8, 9, 11, 35, 36, 57, 59, 62)

**Head Cover Assembly for UW-6SHK**  
Code: 018-009-1  
Components (#1, 4, 5, 6, 10, 12, 13, 14)

**Handle Assembly for UW-6SHBRK**  
Code: 026-984-5  
Components (#16, 17, 18, 19, 20, 21, 22, 24, 25, 26, 27, 28, 29, 31, 32, 35, 36, 53-2, 57, 59, 62)

Hammer Casing Assembly components are marked with "○"  
Head Cover Assembly components for UW-6SHK are marked with "●".  
Handle Assembly components for UW-6SHK are marked with "△".  
Handle Assembly components for UW-6SHBRK are marked with "×".

## PARTS LIST — FOR REFERENCE ONLY

Index Number	Part Number	Description	Qty.	Index Number	Part Number	Description	Qty.	Index Number	Part Number	Description	Qty.
<b>PARTS FOR UW-6SHK</b>				25	970-232-0	Pin(H)(3X32)	1	56	961-012-0	Flat Washer (5MM)	4
1	018-012-2	Head Cover	1	26	973-016-0	Roll Pin (2X16)	1	57	965-073-0	Heli-Sert(UNF5/8 N6)	1
2	018-025-2	Handle	1	27	973-120-0	Roll Pin(3X20)	2	58	973-110-0	Roll Pin(3X10)	2
3	018-107-2	Throttle Trigger	1	28	976-018-0	Spring(2.8X8.5)	1	59	977-178-0	Cone Spring(7.8X9.8X22)(0.8)	1
4	018-210-2	Reverse Valve	1	29	990-205-0	O-Ring(JW1516-5)	1	60	945-962-0	Hexagon Round Head Bolt(M6X6)	1
5	018-211-2	Reverse Valve Bushing	1	31	990-914-0	O-Ring(SNS-16)	1	61	980-008-0	Round Head Notch(2.4)	1
6	018-224-1	Reverse Valve Set Screw	1	32	027-885-6	Silencer Assy	1	62	981-207-0	Ball(9/32)	1
7	947-182-0	Half Head Bolt(MSX82)	4	37	026-285-7	Rear Plate	1	63	982-403-0	Ball Bearing(EE-4)	2
8	970-228-0	Pin(H)(3X28)	1	38	026-286-7	Cylinder	1	65	993-033-0	Felt Ring (14X18X1.5)	1
9	973-116-0	Roll Pin(3X16)	2	52-1	004-790-2	Suspension Ring	1	67	973-006-0	Roll Pin(2X6)	1
10	976-072-0	Spring(4.5X10.5)	1	53-1	018-853-4	Rear Packing	1	<b>Anvils marked with "★" are at the User's option.</b>			
11	966-100-0	Allen Head Plug(1/8)	1	53-2	973-340-0	Roll Pin(6X10)	2	68	018-319-1	Anvil(O)	1
12	981-004-0	Ball(3/16)	1	<b>COMMON PARTS</b>				71	143-319-1	Anvil(P)	1
13	990-600-0	O-Ring(7.7X2.3)	1	35	010-102-1	Valve Bushing	1	72	135-800-2	Socket Retainer Pin(Flat)	1
14	990-903-0	O-Ring(SNS-5)	1	36	185-091-7	Air Inlet Bushing	1	73	976-018-1	Spring(2.8X8.5)	1
37	019-285-7	Rear Plate	1	39	018-287-1	Roter	1	74	971-250-0	Pin(3.3X2)	1
38	019-286-7	Cylinder	1	40	018-288-1	Blade	6	86	025-350-2	Driver Anvil(Sleeve Type)	1
52	010-790-1	Suspension Ring	1	41	026-289-7	Front Plate	1	87	011-351-1	Bit Sleeve	1
53	018-853-1	Rear Packing	1	42	026-028-3	Hammer Casing	1	88	011-352-1	Bit Spacer	1
<b>PARTS FOR UW-6SHK</b>				43	018-328-1	Anvil Bushing	1	89	976-327-0	Spring(13.5X11)	1
15	018-012-4	Head Cover	1	44	018-310-1	Anvil Rear Spacer	1	90	978-117-0	Snap Ring(11.7X1.0)	1
16	026-025-5	Handle	1	45	018-311-1	Hammer Cam	1	91	981-002-0	Ball(1/8)	1
17	026-107-7	Throttle Trigger	1	46	018-312-1	Hammer Cage	1	<b>ACCESSORIES</b>			
18	027-210-5	Reverse Valve	1	47	018-313-1	Hammer	2	92	900-056-0	Hexagon Socket(13X25)	1
19	026-211-5	Reverse Valve Bushing	1	48	018-317-1	Hammer Pin	2	94	932-110-0	Air Regulator(U1/4)	1
20	026-222-5	Reverse Valve Setter	1	49	041-318-1	Pilot Pin	1	96	971-990-0	Pin(3X16.5)	1
21	054-220-1	Reverse Lever Notch	1	50	018-326-1	Hammer Cage Bushing	1	97	990-290-0	O-Ring(JW12)	1
22	023-212-4	Reverse Lever	1	51	018-327-1	Anvil Front Spacer	1	<b>FOOTNOTES</b>			
23	947-172-0	Half Head Bolt(MSX72)	4	54	018-857-1	Front Packing	1	AIMCO also offers a complete line of standard & special adapters, bits, sockets and extensions.			
24	952-110-0	Allen Head Dog Point Screw(M4X12)	1	55	960-036-0	Hexagon Nut(1-M5)	4				



10000 SE PINE,  
PORTLAND, OR 97216  
503-254-6600  
FAX 503-255-2615

When ordering spare parts, please specify tool type, part number and description.