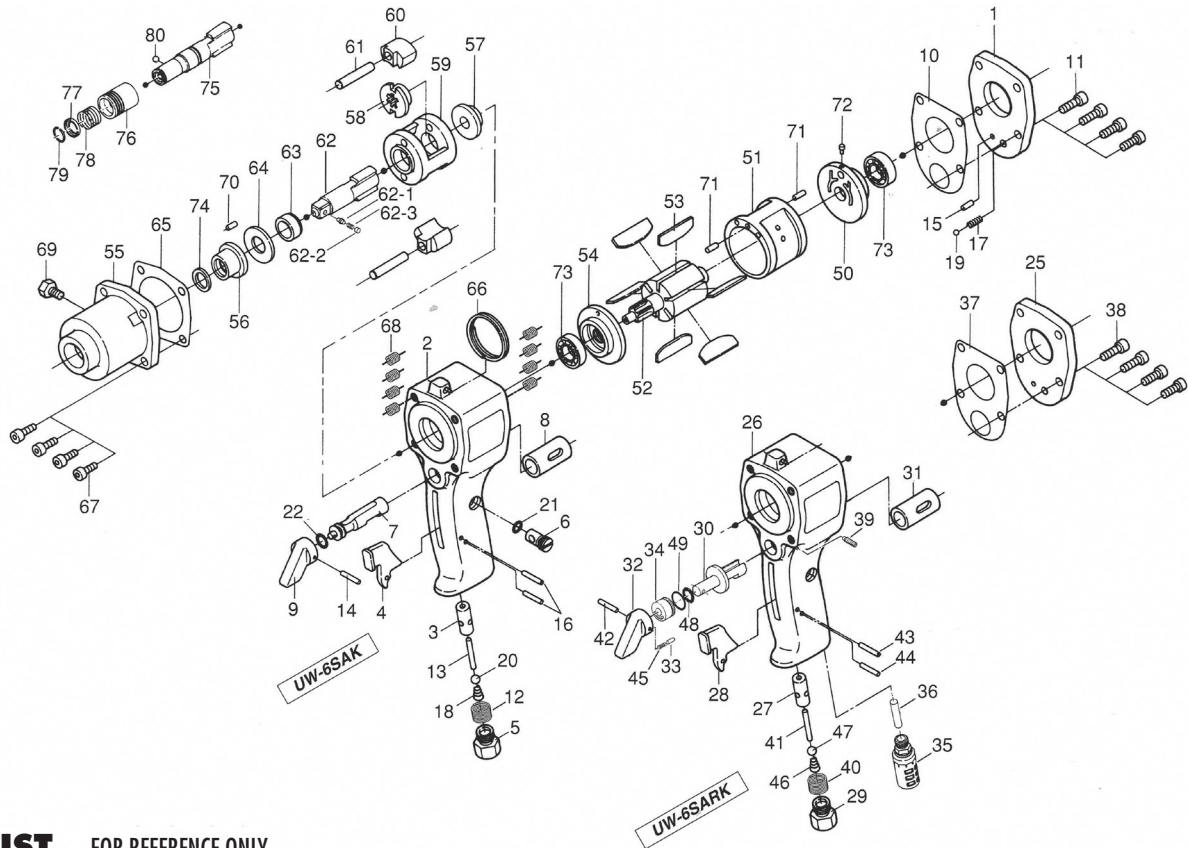


UW-6SAK, -6SARK, -6SADK, -6SARDK IMPACT WRENCHES

EXPLODED VIEW



PARTS LIST — FOR REFERENCE ONLY

Index Number	Part Number	Description	Qty.
PARTS FOR UW-6SAK			
1	023-012-1	Head Cover	1
2	023-025-2	Handle	1
3	010-102-1	Valve Bushing	1
4	018-107-2	Valve Lever	1
5	185-091-7	Air Inlet Bushing	1
6	023-240-1	Regulator Valve	1
7	023-210-1	Reverse Valve	1
8	023-211-1	Reverse Valve Bushing	1
9	023-212-1	Reverse Lever	1
10	023-853-1	Rear Packing	1
11	945-114-0	Allen Head Bolt (M5 X 14)	4
12	965-073-0	Heli-sert (UNF5/8)	1
13	970-232-0	Pin (H) (3 X 32)	1
14	973-016-0	Roll Pin (2 X 16)	1
15	973-108-0	Roll Pin (3 X 8)	1
16	973-116-0	Roll Pin (3 X 16)	2
17	976-033-0	Spring (3.6 X 7)	1
18	977-178-0	Cone Spring (7.8 X 9.8 X 22)	1
19	981-003-0	Ball (5/32)	1
20	981-207-0	Ball (9/32)	1
21	990-003-0	O-Ring (P5)	1
22	990-005-0	O-Ring (P7)	1

Index Number	Part Number	Description	Qty.
PARTS FOR UW-6SARK			
25	023-012-4	Head Cover	1
26	023-025-4	Handle	1
27	010-102-1	Valve Bushing	1
28	026-107-7	Valve Lever	1
29	185-091-7	Air Inlet Bushing	1
30	023-210-4	Reverse Valve	1

Index Number	Part Number	Description	Qty.
31	023-211-4	Reverse Valve Bushing	1
32	023-212-4	Reverse Lever	1
33	054-220-1	Reverse Lever Notch	1
34	023-222-4	Reverse Valve Setter	1
35	235-885-0	Silencer	1
36	029-744-7	Silencer Tube	1
37	023-853-4	Rear Packing	1
38	945-954-0	Allen Head Bolt (M5 X 16)	4
39	952-110-0	Allen Head Screw (M4 X 12)	1
40	965-073-0	Heli-sert (UNF5/8)	1
41	970-231-0	Pin (H) (3 X 31)	1
42	973-016-0	Roll Pin (2 X 16)	1
43	973-118-0	Roll Pin (3 X 18)	1
44	973-122-0	Roll Pin (3 X 22)	1
45	976-018-0	Spring (2.8 X 8.5)	1
46	977-178-0	Cone Spring (7.8 X 9.8 X 22)	1
47	981-207-0	Ball (9/32)	1
48	990-205-0	O-Ring (JW1516-5)	1
49	990-914-0	O-Ring (SNS-16)	1

Index Number	Part Number	Description	Qty.
COMMON PARTS			
50	029-285-7	Rear Plate	1
51	029-286-7	Cylinder	1
52	010-287-1	Rotor	1
53	010-288-1	Blade	6
54	029-289-7	Front Plate	1
55	029-028-7	Hammer Casing	1
56	010-328-1	Anvil Bushing	1
57	010-310-1	Anvil Rear Spacer	1
58	010-311-1	Hammer Cam	1
59	010-312-1	Hammer Cage	1

Index Number	Part Number	Description	Qty.
60	010-313-1	Hammer	2
61	010-317-1	Hammer Pin	2
62	135-319-1	Anvil (P)	1
62-1	135-800-2	Socket Retainer Pin	1
62-2	971-250-0	Pin (3.3 X 2)	1
62-3	976-018-0	Spring (2.8 X 8.5)	1
63	010-326-1	Hammer Cage Bushing	1
64	010-327-1	Anvil Front Spacer	1
65	010-857-1	Front Packing	1
66	004-790-2	Suspension Ring	1
67	945-114-0	Allen Head Bolt (M5 X 14)	4
68	965-011-0	Heli-sert (M5 X 1.5D)	8
69	945-962-0	Hexagon Head Bolt (M6 X 6)	1
70	973-006-0	Roll Pin (2 X 6)	1
71	973-110-0	Roll Pin (3 X 10)	2
72	980-008-0	Round Head Notch (2.4)	1
73	982-402-0	Ball Bearing (EE-3)	2
74	993-032-0	Felt Ring (12 X 17 X 2)	1

Index Number	Part Number	Description	Qty.
DRIVER ANVIL TYPE			
75	011-350-1	Driver Anvil	1
76	011-351-1	Bit Sleeve	1
77	011-352-1	Bit Spacer	1
78	976-327-0	Spring (13.5 X 11)	1
79	978-117-0	Snap Ring (11.7 X 1.0)	1
80	981-002-0	Ball (1/8)	1

Index Number	Part Number	Description	Qty.
ACCESSORIES			
82	932-110-0	Air Regulator (U1/4)	1



10000 SE PINE
PORTLAND, OR 97216
503-254-6600
FAX 503-255-2615

When ordering spare parts, please specify tool type, part number, and description.

FOOTNOTES