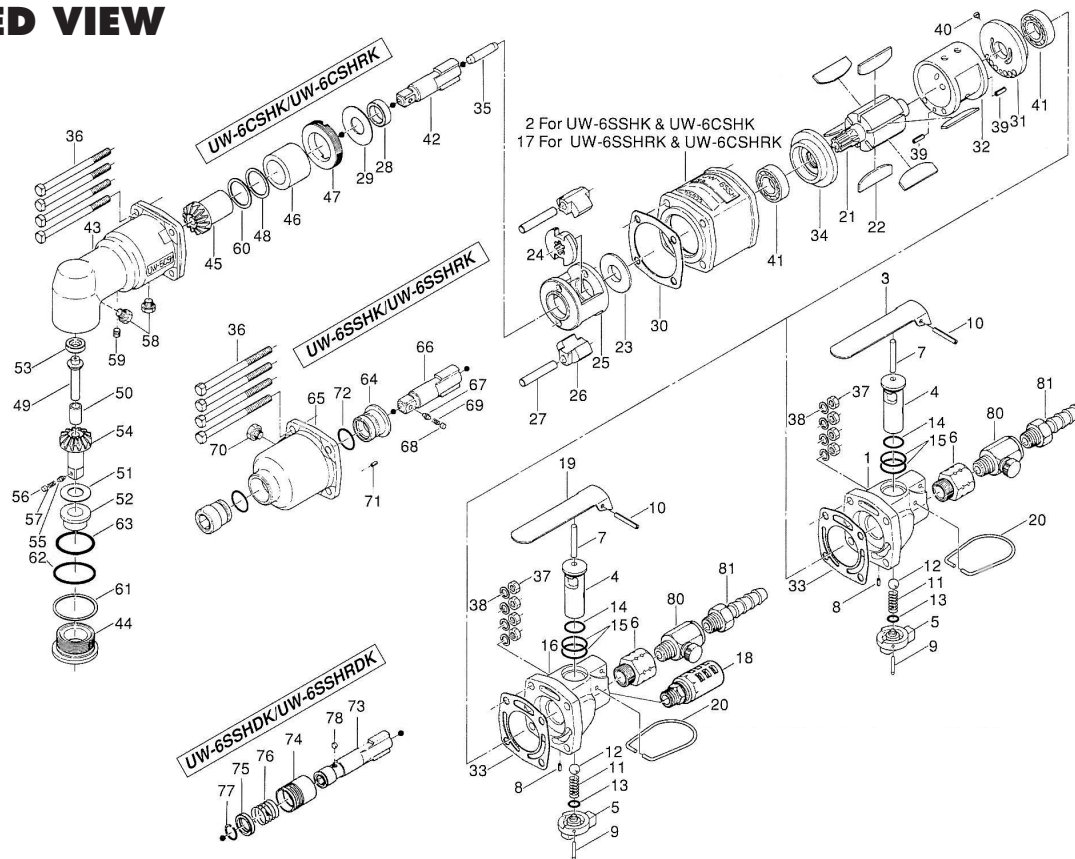


UW-6CSH(R)(D)K & 6SSH(R)(D)K IMPACT WRENCHES

EXPLODED VIEW



PARTS LIST — FOR REFERENCE ONLY

Index Number	Part Number	Description	Qty.	Index Number	Part Number	Description	Qty.	Index Number	Part Number	Description	Qty.
FOR UW-6SSHK & UW-6CSHK				COMMON PARTS				HAMMER CASING FOR FOR UW-6SSHK & UW-6SSHRK			
1	020-014-2	Valve Body	1 ○	20	010-790-1	Suspension Ring	1	53	020-435-1	Driven Gear Collar Bushing	1 ■
2	020-025-1	Casing	1	21	018-287-1	Rotor	1	54	147-430-1	Driven Gear (P)	1 ■
3	020-107-1	Valve Lever	1 ○	22	018-288-1	Blade	6	55	135-800-2	Socket Retainer Pin	1 ■
4	020-210-1	Reverse Valve	1 ○	23	018-310-1	Anvil Rear Spacer	1	56	971-250-0	Pin (3.3 x 2)	1 ■
5	020-212-1	Reverse Lever	1 ○	24	018-311-1	Hammer Cam	1	57	976-018-0	Spring (2.8 x 8.5)	1 ■
6	185-091-7	Air Inlet Bushing	1 ○	25	018-312-1	Hammer Cage	1	58	945-962-0	Hexagon Head Bolt (M6 x 6)	2 ■
7	970-340-0	Pin (H) (4 x 28)	1 ○	26	018-313-1	Hammer	2	59	953-205-0	Allen Head Screw (M5 x 5)	1 ■
8	973-006-0	Roll Pin (2 x 6)	1 ○	27	018-317-1	Hammer Pin	2	60	975-795-0	Adjusting Spacer (29 x 26 x 1)	1 ■
9	973-022-0	Roll Pin (2 x 22)	1 ○	28	018-326-1	Hammer Cage Bushing	1	61	975-830-0	Adjusting Spacer (34 x 30 x 1)	1 ■
10	973-124-0	Roll Pin (3 x 24)	1 ○	29	018-327-1	Anvil Front Spacer	1	62	990-011-0	O-Ring (P12)	1 ■
11	977-154-0	Cone Spring (7 x 7.5 x 17)	1 ○	30	018-857-1	Front Packing	1	63	990-501-0	O-Ring (G25)	1 ■
12	981-208-0	Ball (5/16)	1 ○	31	019-285-7	Rear Plate	1	SLEEVE TYPE FOR FOR UW-6SSHDK & UW-6SSHRDK			
13	990-004-0	O-Ring (P-6)	1 ○	32	019-286-7	Cylinder	1	73	025-350-2	Driver Anvil	1
14	990-009-0	O-Ring (P-10A)	1 ○	33	020-852-1	Rear Packing	1	74	011-351-1	Bit Sleeve	1
15	990-015-0	O-Ring (P-15)	2 ○	34	026-289-7	Front Plate	1	75	011-352-1	Bit Spacer	1
FOR UW-6SSHRK & UW-6CSHRK				35	041-318-1	Pilot Pin	1	76	976-327-0	Spring (13.5 x 11)	1
16	020-014-5	Valve Body	1 ●	36	947-175-0	Half Head Bolt (M5 x 75)	4	77	978-117-0	Snap Ring (11.7 x 1.0)	1
17	020-025-5	Casing	1	37	960-036-0	Hexagon Nut (1-M5)	4	78	981-002-0	Ball (1/8)	1
18	235-885-0	Silencer Assembly	1 ●	38	961-012-0	Flat Washer (5 mm)	4	FOOTNOTES			
19	438-107-3	Valve Lever	1 ●	39	973-110-0	Roll Pin (3 x 10)	2	○ =	Items in Valve Body Assembly #020-981-1 (for UW-6SSHK and UW-6CSHK)		
4	020-210-1	Reverse Valve	1 ●	40	980-008-0	Round Head Notch (2.4)	1	● =	Items in Valve Body Assembly #020-981-5 (for UW-6SSHRK and UW-6CSHRK)		
5	020-212-1	Reverse Lever	1 ●	41	982-403-0	Ball Bearing (EE-4)	2	■ =	Items in Angle Head Casing Assembly #020-883-1 (for UW-6CSHK and UW-6CSHRK)		
6	185-091-7	Air Inlet Bushing	1 ●	ANGLE HEAD CASING FOR FOR UW-6CSHK & UW-6CSHRK				▲ =	Items in Hammer Casing Assembly #026-007-3 (for UW-6SSHK and UW-6SSHRK)		
7	970-340-0	Pin (H) (4 x 28)	1 ●	42	018-319-1	Anvil	1				
8	973-006-0	Roll Pin (2 x 6)	1 ●	43	020-028-1	Angle Head Casing	1 ■				
9	973-022-0	Roll Pin (2 x 22)	1 ●	44	020-067-1	Angle Head Casing Cover	1 ■				
10	973-124-0	Roll Pin (3 x 24)	1 ●	45	020-420-1	Driving Gear	1 ■				
11	977-154-0	Cone Spring (7 x 7.5 x 17)	1 ●	46	020-421-1	Driving Gear Bushing	1 ■				
12	981-208-0	Ball (5/16)	1 ●	47	020-422-1	Driving Gear Bushing Screw	1 ■				
13	990-004-0	O-Ring (P-6)	1 ●	48	020-425-1	Driving Gear Spacer	1 ■				
14	990-009-0	O-Ring (P-10A)	1 ●	49	020-431-1	Driven Gear Spindle	1 ■				
15	990-015-0	O-Ring (P-15)	2 ●	50	020-432-1	Driven Gear Collar	1 ■				



10000 SE PINE
PORTLAND, OR 97216
503-254-6600
FAX 503-255-2615

When ordering spare parts, please specify tool type, part number, and description.