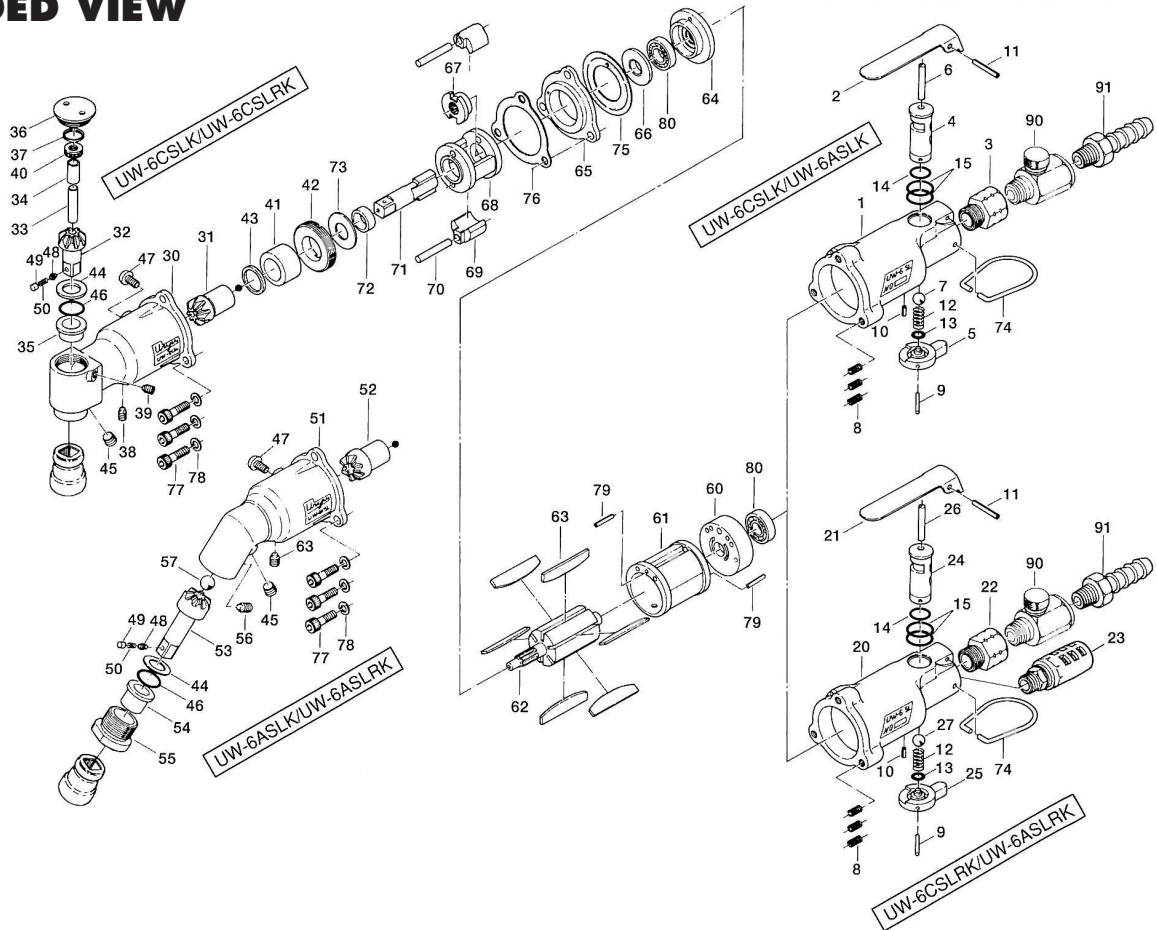


UW-6AS(L)(R)K, UW-6CS(L)(R)K IMPACT WRENCHES

EXPLODED VIEW



PARTS LIST — FOR REFERENCE ONLY

Index Number	Part Number	Description	Qty.
--------------	-------------	-------------	------

FOR UW-6CSLK AND UW-6ASLK

1	006-025-2	Casing	1 ○
2	008-107-1	Valve Lever	1 ○
3	185-091-7	Air Inlet Bushing	1 ○
4	008-210-1	Reverse Valve	1 ○
5	008-212-1	Reverse Lever	1 ○
6	970-328-0	Pin (H) (4 x 27)	1 ○
7	981-208-0	Ball (5/16)	1 ○
8	965-011-0	Heli-Sert (M5 x 1.5D)	3 ○●
9	971-122-0	Pin (2 x 22)	1 ○●
10	973-006-0	Roll Pin (2 x 6)	1 ○●
11	973-124-0	Roll Pin (3 x 24)	1 ○●
12	977-154-0	Cone Spring (7 x 7.5 x 17)	1 ○●
13	990-003-0	O-Ring (P-5)	1 ○●
14	990-007-0	O-Ring (P-9)	1 ○●
15	990-014-0	O-Ring (P-14)	2 ○●

FOR UW-6CSLRK AND UW-6ASLRK

20	006-025-4	Casing	1 ●
21	500-107-1	Valve Lever	1 ●
22	180-091-6	Air Inlet Bushing	1 ●
23	235-885-0	Silencer Assembly	1 ●
24	418-210-1	Reverse Valve	1 ●
25	440-212-1	Reverse Lever	1 ●
26	970-327-0	Pin (H) (4 x 26)	1 ●
27	981-207-0	Ball (9/32)	1 ●

ANGLE HEAD CASING (B) FOR UW-6CSLK AND UW-6CSLRK

30	008-028-3	Hammer Casing	1 ■
31	008-420-1	Driving Gear	1 ■

Index Number	Part Number	Description	Qty.
--------------	-------------	-------------	------

32	133-430-1	Driven Gear (P)	1 ■
33	008-431-1	Driven Gear Spindle	1 ■
34	008-432-1	Driven Gear Spindle Collar	1 ■
35	008-434-1	Driven Gear Bushing	1 ■
36	008-067-2	Angle Head Casing Cover	1 ■
37	975-786-0	Adjusting Spacer (27 x 22 x 1)	1 ■
38	952-206-0	Allen Head Screw (M5 x 6)	1 ■
39	952-208-0	Allen Head Screw (M5 x 8)	1 ■
40	987-506-0	Mini. Thrust Bearing (T1260)	1 ■
41	008-421-1	Driving Gear Bushing	1 ■▲
42	008-422-1	Driving Gear Bushing Screw	1 ■▲
43	008-425-1	Driving Gear Spacer	1 ■▲
44	008-433-1	Driven Gear Spacer	1 ■▲
45	966-100-0	Allen Head Plug (1/8)	1 ■▲
46	990-910-0	O-Ring (SNS-12.5)	1 ■▲
47	945-962-0	Hexagon Head Bolt (M6 x 6)	1 ■▲
48	135-800-2	Socket Retainer Pin	1 ■▲
49	971-250-0	Pin (3.3 x 2)	1 ■▲
50	976-018-0	Spring (2.8 x 8.5)	1 ■▲

ANGLE HEAD CASING (B) FOR UW-6ASLK AND UW-6ASLRK

51	009-028-2	Hammer Casing	1 ▲
52	009-420-1	Driving Gear	1 ▲
53	134-430-1	Driven Gear (P)	1 ▲
54	009-434-1	Driven Gear Bushing	1 ▲
55	009-067-1	Angle Head Casing Cover	1 ▲
56	954-306-0	Allen Head Screw (M6 x 6)	2 ▲
57	981-010-0	Ball (3/8)	1 ▲

Index Number	Part Number	Description	Qty.
--------------	-------------	-------------	------

COMMON PARTS

60	004-285-7	Rear Plate	1
61	004-286-7	Cylinder	1
62	004-287-1	Rotor	1
63	004-288-1	Blade	6
64	004-289-7	Front Plate	1
65	004-027-1	Separator	1
66	010-310-1	Anvil Rear Spacer	1
67	004-311-1	Hammer Cam	1
68	004-312-1	Hammer Cage	1
69	004-313-1	Hammer	2
70	004-317-1	Hammer Pin	2
71	008-319-1	Anvil	1
72	004-326-1	Hammer Cage Bushing	1
73	010-327-1	Anvil Front Spacer	1
74	010-790-1	Suspension Ring	1
75	004-856-1	Separator Packing	1
76	004-857-1	Front Packing	1
77	945-118-0	Allen Head Bolt (M5 x 18)	3
78	962-008-0	Spring Washer (2-5S)	3
79	973-074-0	Roll Pin (2.5 x 14)	2
80	982-402-0	Ball Bearing (EE-3)	2

FOOTNOTES

- = Items in Casing Assembly #006-984-1 (for UW-6CSLK and UW-6ASLK)
- = Items in Casing Assembly #006-984-4 (for UW-6CSLRK and UW-6ASLRK)
- = Items in Angle Head Casing Assembly (B) #008-833-1 (for UW-6CSLK and UW-6CSLRK)
- ▲ = Items in Angle Head Casing Assembly (B) #009-833-1 (for UW-6ASLK and UW-6ASLRK)



10000 SE PINE
PORTLAND, OR 97216
503-254-6600
FAX 503-255-2615

When ordering spare parts, please specify
tool type, part number, and description.