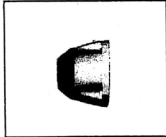
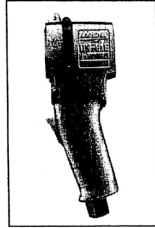


UW-61E(R)(D)K IMPACT WRENCHES

EXPLODED VIEW

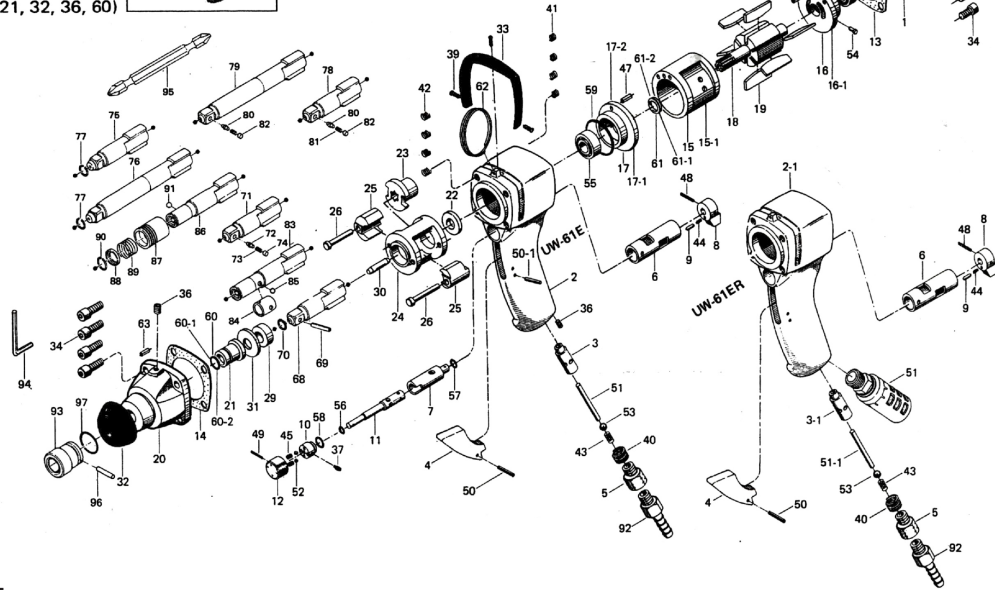
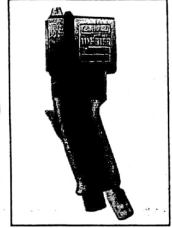


Hammer Casing Assembly
Code No. 030-007-1
Components (#20, 21, 32, 36, 60)



Handle Assembly For UW-61E
Code No. 030-004-8
Components (#2, 3, 4, 5, 6, 33, 36) (39, 40, 41, 42, 43, 50, 51, 53)

Handle Assembly For UW-61ER
Code No. 030-004-2
Components (#2-1, 3-1, 4, 5, 6, 33, 36, 39, 40, 41, 42, 43, 50, 51-1, 53)



PARTS LIST — FOR REFERENCE ONLY

Index Number	Part Number	Description	Qty.	Index Number	Part Number	Description	Qty.	Index Number	Part Number	Description	Qty.
COMMON PARTS											
1	030-012-1	Head cover	1	40	965-073-0	Heli-sert (UNF5/8 N6)	1	80	135-800-2	Socket Retainer Pin (Flat)	1
4	085-107-1	Throttle Trigger	1	41	965-011-0	Heli-sert (M5 x 1.5D)	4	81	976-018-1	Spring (2.8 x 8.5)	1
5	713-091-1	Air Inlet Bushing	1	42	965-012-0	Heli-sert (M5 x 2.0D)	4	82	971-202-0	Pin (3 x 2)	1
5-1	185-091-7	Air Inlet Bushing (K-Type)	1	43	977-220-0	Cone Spring (9 x 10 x 25)	1	83	025-350-5	Driver Anvil (Band Type) (option)	1
6	054-211-1	Reverse Valve Bushing	1	44	976-018-0	Spring (2.8 x 8.5)	1	84	430-356-1	Bit Band	1
7	054-210-1	Reverse Valve	1	45	976-066-0	Spring (4.8 x 9)	2	85	981-002-0	Bali (1/8)	1
8	054-212-1	Reverse Lever	1	47	973-110-0	Roll Pin (3 x 10)	2	86	025-350-4	Driver Anvil (Sleeve Type) (option)	1
9	054-220-1	Reverse Lever Notch	1	48	973-020-0	Roll Pin (2 x 20)	1	87	011-351-3	Bit Band	1
10	054-241-1	Regulator Valve Bushing	1	49	973-016-0	Roll Pin (2 x 16)	1	88	011-352-1	Bit Spacer	1
11	054-240-1	Regulator Valve	1	50	973-118-0	Roll Pin (3 x 18)	1	89	976-327-0	Spring (13.5 x 11)	1
12	054-242-1	Regulator Dial	1	50-1	973-120-0	Roll Pin (3 x 20)	1	90	978-117-0	Snap Ring (11.7 x 1.0)	1
13	030-853-1	Rear Packing	1	52	981-004-0	Ball (3/16)	1	91	981-003-0	Ball (5/32)	1
14	030-857-1	Front Packing	1	53	981-210-0	Ball (3/8)	1	PARTS FOR UW-61E			
15	018-286-1	Cylinder	1	54	980-008-0	Round Head Notch (2.4)	1	2	030-025-8	Handle	1
15-1	026-286-7	Cylinder (K-Type)	1	55	982-403-0	Ball Bearing (EE-4)	2	3	054-102-1	Valve Bushing	1
16	030-285-1	Rear Plate	1	56	990-004-0	O-Ring (P-6)	1	51	970-339-0	Pin (H) (4 x 39)	1
16-1	026-285-7	Rear Plate (K-Type)	1	57	990-006-0	O-Ring (P-5)	1	36	966-100-0	Allen Head Plug (1/8)	1
17	018-289-1	Front Plate	1	58	990-403-0	O-Ring (T-103)	1	PARTS FOR UW-61ER			
17-1	026-289-7	Front Plate (K-Type)	1	59	990-033-0	O-Ring (P-34)	1	2-1	030-025-2	Handle	1
18	018-287-1	Rotor	1	59	990-033-0	O-Ring (P-34)	1	3-1	063-102-1	Valve Bushing	1
19	018-288-1	Blade	6	60	990-601-0	O-Ring (1.5 x 1.7)	1	51	026-885-7	Silencer Assembly	1
20	030-028-1	Hammer Casing	1	60-1	993-033-0	Felt Ring (14 x 18 x 15)	1	51-1	970-335-0	Pin (H) (4 x 34)	1
21	018-328-1	Anvil Bushing	1	61	991-006-0	X Ring (R-12)	1	PARTS FOR OIL BATH			
22	018-310-1	Anvil Rear Spacer	1	61-1	004-790-2	Suspension Ring	1	16-2	850-540-1	Rear Plate	1
23	018-311-1	Hammer Cam	1	62	973-006-2	Roll Pin (2 x 6)	1	17-2	850-541-1	Front Plate	1
24	018-312-1	Hammer Cage	1	63	018-319-1	Anvil (D) (option)	1	60-2	990-156-0	O-Ring (P116)	1
25	018-313-1	Hammer	2	68	971-990-0	Pin (3 x 16.5)	1	61-2	990-182-0	O-Ring (12.5 x 1.8)	1
26	018-317-1	Hammer Pin	2	70	990-290-0	O-Ring (JW-12)	1	ACCESSORIES			
29	018-326-1	Hammer Cage Bushing	1	71	143-319-1	Anvil (P) (option)	1	92	940-114-0	Air Hose Nipple (NPT1/4 x 3/8)	1
30	041-318-1	Pilot Pin	1	72	135-800-1	Socket Retainer Pin	1	93	900-066-0	Hexagon Socket (13 x 25)	1
31	018-327-1	Anvil Front Spacer	1	73	976-018-1	Spring (2.8 x 8.5)	1	94	939-105-0	Allen Wrench (4 mm)	1
32	030-841-1	Hammer Casing Protector	1	74	971-202-0	Pin (3 x 2)	1	95	916-810-0	(+) Double Bit (No.2 x 75)	1
33	030-840-1	Handle Protector	1	75	144-321-1	Anvil (R) (option)	1	96	971-990-0	Pin (3 x 16.5)	1
34	945-114-0	Allen Head Bolt (M5 x 14)	8	76	144-324-1	Extended Anvil (R) L=120 mm (option)	1	97	990-290-0	O-Ring (JW12)	1
36	966-100-0	Allen Head Plug (1/8)	1	77	978-103-0	Snap Ring (10.2 x 1.6)	1	FOOTNOTES			
37	952-212-0	Allen Head Dog Point Screw (M5 x 12)	1	78	143-846-2	Anvil (P-Flat) (option)	1	● = Components for Handle Assembly #030-004-8 (for UW-61E)			
39	963-350-0	Tapping Screw (M4 x 8)	3	79	891-060-1	Extended Anvil (P-Flat) L=110 mm (option)	1	■ = Components for Handle Assembly #030-004-2 (for UW-61ER)			
								▲ = Components for Hammer Casing Assembly #030-007-1			



10000 SE PINE
PORTLAND, OR 97216
503-254-6600
FAX 503-255-2615

When ordering spare parts, please specify
tool type, part number, and description.

● = Components for Handle Assembly #030-004-8 (for UW-61E)
■ = Components for Handle Assembly #030-004-2 (for UW-61ER)
▲ = Components for Hammer Casing Assembly #030-007-1