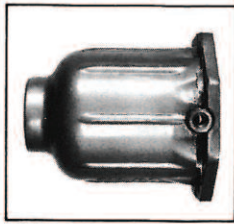
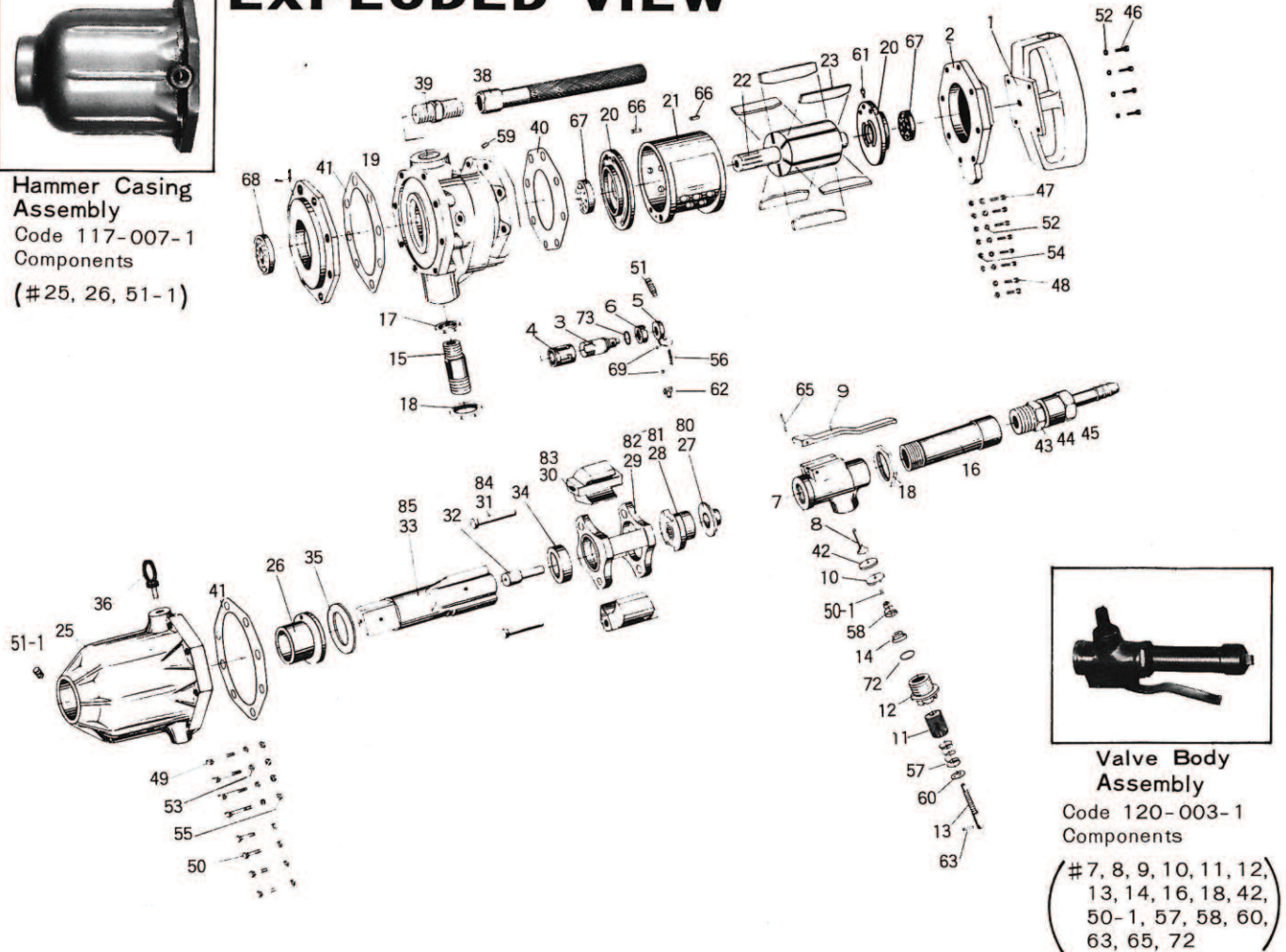


# UW-55S, UW-550 IMPACT WRENCHES



**Hammer Casing Assembly**  
Code 117-007-1  
Components  
(#25, 26, 51-1)

## EXPLODED VIEW



**Valve Body Assembly**  
Code 120-003-1  
Components  
(#7, 8, 9, 10, 11, 12, 13, 14, 16, 18, 42, 50-1, 57, 58, 60, 63, 65, 72)

## PARTS LIST

Valve Body assembly components are marked with "O"  
Hammer casing assembly components are marked with "X"

Index No.	Code Number	Part Name	Quantity	Index No.	Code Number	Part Name	Quantity	Index No.	Code Number	Part Name	Quantity
# 1	117-725-1	Head Handle	1	#32	117-318-1	Pilot Pin	1	#57	976-440-0	O Spring (18x25)	1
# 2	117-012-1	Head Cover	1	#33	117-319-1	Anvil	1	#58	977-270-0	O Cone Spring (10x20x20)	1
# 3	117-210-1	Reverse Valve	1	#34	117-326-1	Hammer Cage Bushing	1	#59	966-100-0	Allen Head Plug (1/8)	1
# 4	117-211-1	Reverse Valve Bushing	1	#35	117-327-1	Anvil Front Spacer	1	#60	975-115-0	O Spacer (19.5x9.3x2)	1
# 5	117-212-1	Reverse Lever	1	#36	120-795-1	Eye Bolt	2	#61	980-007-0	Round Head Notch (5MM)	1
# 6	117-216-1	Reverse Notch Ring	1	#37	117-823-1	Filler 3/4	1	#62	980-020-0	Flat Head Notch (S) (4.9)	1
# 7	120-014-1	O Valve Body	1	#38	636-720-1	Dead Handle	1	#63	971-324-0	O Pin (4x24)	1
# 8	120-100-1	O Valve	1	#39	636-730-1	Dead Handle Connector	1	#65	971-443-0	O Pin (5x43)	1
# 9	120-107-1	O Throttle Trigger	1	#40	117-853-1	Rear Packing	1	#66	973-316-0	Roll Pin (5x16)	2
#10	120-120-1	O Valve Packing Spacer	1	#41	117-856-1	Front Packing	2	#67	982-206-0	Ball Bearing (6206)	2
#11	120-242-1	O Regulator Dial	1	#42	120-872-1	O Valve Packing	1	#68	985-005-0	Cone Roller Bearing (30207)	1
#12	120-243-1	O Regulator Valve Cover	1	#46	946-426-0	Hexagon Head Bolt (M8x26)	4	#69	981-004-0	Steel Ball (3/16)	2
#13	120-245-1	O Regulator Valve Pin	1	#47	946-445-0	Hexagon Head Bolt (M8x45)	6	#70	965-041-0	Heli-sert (M8x1.5D)	6
#14	120-246-1	O Regulator Valve O-Ring Casing	1	#48	946-435-0	Hexagon Head Bolt (M8x35)	2	#71	965-070-0	Heli-sert (UNF 3/8x1D)	4
#15	117-729-1	Valve Body Connector	1	#49	946-803-0	Hexagon Head Bolt (UF 3/8x65)	4	#72	990-004-0	O-Ring (P6)	1
#16	120-745-1	O Valve Body Pipe	1	#50	946-801-0	Hexagon Head Bolt (UF 3/8x42)	4	#73	990-219-0	O-Ring (JW1516-19)	1
#17	120-738-1	Valve Body Nut PS1	1	#51	948-110-0	O Round Head Screw (M4x10)	1	<b>PARTS FOR UW-550</b>			
#18	120-739-1	O Valve Body Nut PS1-1/4	2	#51	953-115-0	Allen Head Flat Point Screw (M4x15)	1	#80	117-310-4	Anvil Rear Spacer	1
#19	117-025-1	Casing	1	#51-1	952-512-0	X Allen Head Dog Point Screw (M8x12)	1	#81	117-311-4	Hammer Cam	1
#20	117-284-1	Cylinder Plate	2	#52	962-011-0	Spring Washer (2-8S)	12	#82	117-312-4	Hammer Cage	1
#21	117-286-1	Cylinder	1	#53	962-052-0	Spring Washer (2-3/8S)	8	#83	117-313-4	Hammer	2
#22	117-287-1	Rotor	1	#54	960-048-0	Hexagon Nut (1-M8)	6	#84	117-317-4	Hammer Pin	2
#23	117-288-1	Blade	6	#55	960-301-0	Hexagon Nut (UF 3/8-24)	4	#85	117-319-4	Anvil	1
#24	117-027-1	Separator	1	#56	976-082-0	Spring (5x19)	1	<b>Standard Accessories</b>			
#25	117-028-1	X Hammer Casing	1					#43	940-050-0	Air Hose Nipple (3/4LC)	1
#26	117-328-1	X Anvil Bushing	1					#44	942-200-0	Connecting Screw (NPT1" x PF 7/8)	1
#27	117-310-1	Anvil Rear Spacer	1					#45	943-002-0	Cap Nut (3/40, LC)	1
#28	117-311-1	Hammer Cam	1					#74	900-666-0	Hexagon Socket (85x111)	1
#29	117-312-1	Hammer Cage	1					#75	971-996-0	Pin (5x73)	1
#30	117-313-1	Hammer	2					#76	990-296-0	O-Ring (JW38)	1
#31	117-317-1	Hammer Pin	2								

### FOOTNOTES



10000 SE PINE,  
PORTLAND, OR 97216  
503-254-6600  
FAX 503-255-2615

When ordering spare parts, please specify  
tool type, part number and description.

AIMCO also offers  
a complete line of  
standard & special  
adapters, bits, sockets  
and extensions.