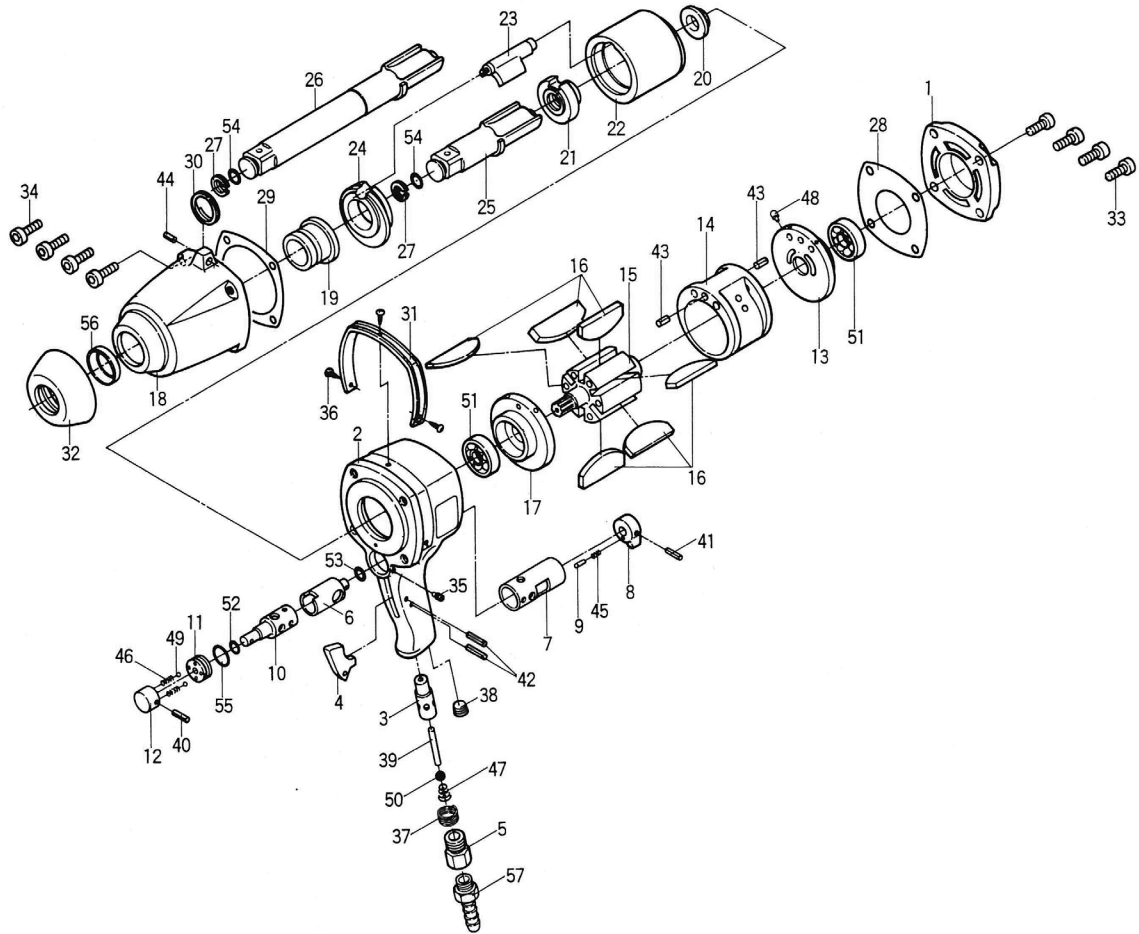


UW-220P, UW-220PL IMPACT WRENCH

EXPLODED VIEW



PARTS LIST — FOR REFERENCE ONLY

Index Number	Part Number	Description	Qty.	Index Number	Part Number	Description	Qty.	Index Number	Part Number	Description	Qty.
1	078-012-1	Head Cover	1	22	082-312-2	Hammer Cage	1	42	973-122-0	Roll Pin (3 x 22)	2 ●
2	082-025-2	Handle	1 ●	23	082-313-2	Hammer	1	43	973-214-0	Roll Pin (4 x 14)	2
3	054-102-1	Valve Bushing	1 ●	24	082-326-2	Hammer Cage Bushing	1	44	973-360-0	Roll Pin (8 x 10)	1 ■
4	085-107-1	Throttle Trigger	1 ●	25	082-321-3	Anvil (WR-0)	1	45	976-018-0	Spring (2.8 x 8.5)	1
5	078-091-2	Air Inlet Bushing	1 ●	26	082-324-5	Extended Anvil (WR-0)	1	46	976-066-0	Spring (4.6 x 9)	2
6	078-210-1	Reverse Valve	1	27	082-379-3	Retainer	1	47	977-220-0	Cone Spring (9 x 10 x 25)	1 ●
7	078-211-1	Reverse Valve Bushing	1 ●	28	082-853-2	Head Cover Packing	1	48	980-008-0	Round Head Notch (2.4)	1
8	054-212-1	Reverse Lever	1 ●	29	082-857-2	Hammer Casing Packing	1	49	981-004-0	Ball (3/16)	2
9	054-220-1	Reverse Lever Notch	1	30	004-790-2	Suspension Ring	1	50	981-210-0	Ball (3/8)	1 ●
10	078-240-1	Regulator Valve	1	31	078-840-1	Handle Protector	1	51	982-103-0	Ball Bearing (6003)	2
11	078-241-1	Regulator Valve Bushing	1	32	083-841-1	Hammer Casing Protector	1	52	990-004-0	O-Ring (P6)	1
12	054-242-1	Regulator Dial	1	33	945-216-0	Allen Head Bolt (M6 x 16)	4	53	990-006-0	O-Ring (P8)	1
13	082-285-2	Rear Plate	1	34	945-218-0	Allen Head Bolt (M6 x 18)	4	54	990-012-0	O-Ring (P12.5)	1
14	082-286-2	Cylinder	1	35	952-214-0	Allen Head Dog Point Screw (M5 x 14)	1	55	990-211-0	O-Ring (JW1516-11)	1
15	082-287-2	Rotor	1	36	963-350-0	Tapping Screw (M4 x 8)	3	56	995-010-0	Oil Seal (G25 x 33 x 4)	1
16	078-288-1	Blade	6	37	965-073-0	Heli-Sert (UNF5/8) (M6)	1 ●				
17	082-289-2	Front Plate	1	38	966-100-0	Allen Head Plug (1/8)	1 ●				
18	082-028-2	Hammer Casing	1 ■	39	970-341-0	Pin (H) (4 x 41)	1 ●				
19	082-328-2	Anvil Bushing	1 ■	40	973-016-0	Roll Pin (2 x 16)	1				
20	082-310-2	Anvil Rear Spacer	1	41	973-020-0	Roll Pin (2 x 20)	1				
21	082-311-2	Hammer Cam	1								

FOOTNOTES

- = Items in Handle Assembly #082-004-2
- = Items in Hammer Casing Assembly #082-007-2



10000 SE PINE
 PORTLAND, OR 97216
 503-254-6600
 FAX 503-255-2615

When ordering spare parts, please specify
 tool type, part number, and description.