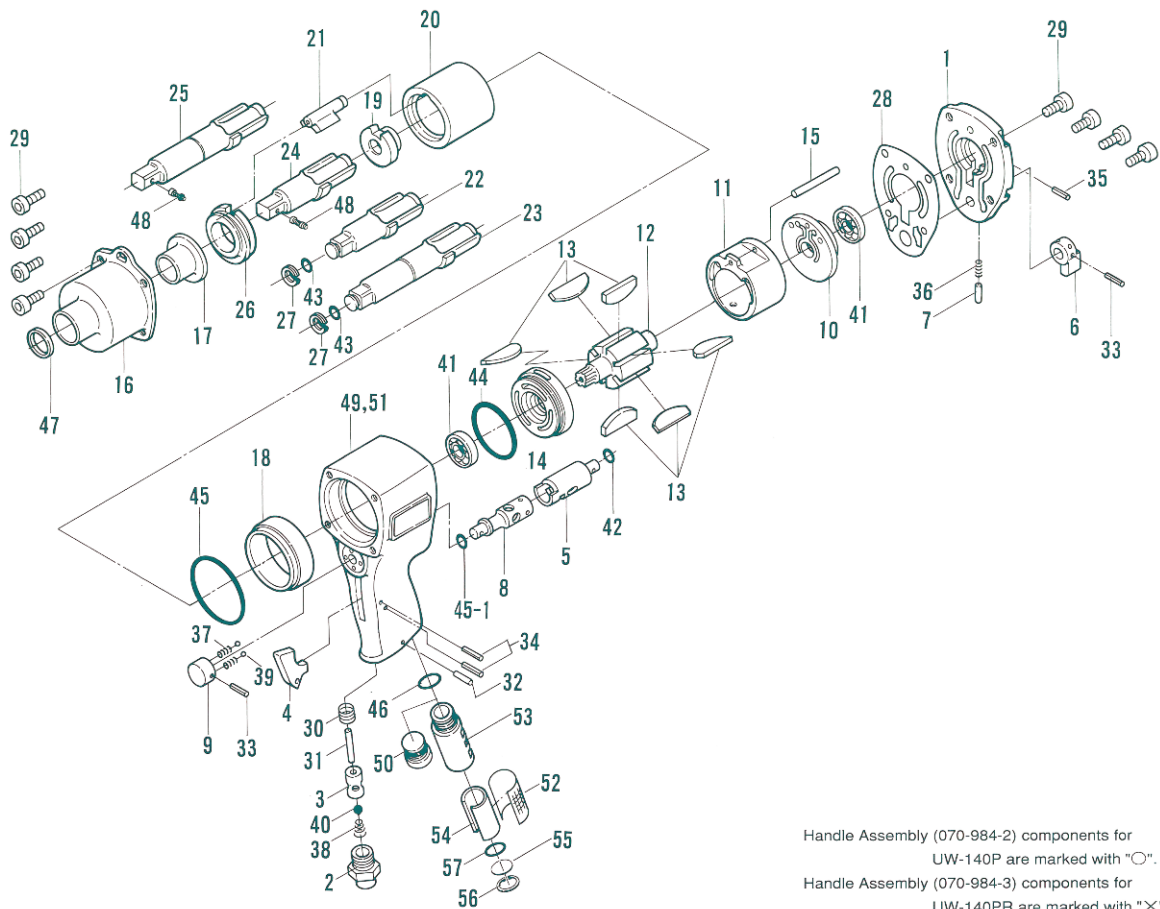


UW-140P SERIES IMPACT WRENCH

EXPLODED VIEW



Handle Assembly (070-984-2) components for UW-140P are marked with "O".
 Handle Assembly (070-984-3) components for UW-140PR are marked with "X".
 Hammer Casing Assembly (070-007-2) components are marked with "△".

PARTS LIST — FOR REFERENCE ONLY

Index Number	Part Number	Description	Qty.	Index Number	Part Number	Description	Qty.	Index Number	Part Number	Description	Qty.
1	070-012-2	Head Cover	1	23	070-324-8	Extended Anvil (WR)	1	45-1	990-904-0	O-Ring (SNS-6)	1
2	185-091-1	Air Inlet Bushing	1 O X	24	070-319-2	Anvil (O)	1	45	990-316-0	O-Ring (ARP568-035)	1
3	063-102-1	Valve Bushing	1 O X	25	070-323-7	Extended Anvil (O)	1	46	990-914-0	O-Ring (SNS-16)	1 X
4	085-107-1	Throttle Trigger	1 O X	26	070-326-2	Hammer Cage Bushing	1	47	995-202-0	Oil Seal (VB19.05x25.4x3.2)	1 △
5	070-210-2	Reverse Valve	1	27	070-379-3	Retainer	1	48	891-304-1	Socket Pin Assembly (1/2)	1
6	070-212-2	Reverse Lever	1	28	070-853-2	Head Cover Packing	1	PARTS FOR UW-140P & PL			
7	054-220-1	Reverse Lever Notch	1	29	945-120-0	Allen Head Bolt (M5x20)	8	49	070-025-2	Handle	1 O
8	070-240-2	Regulator Valve	1	30	965-073-0	Heli-Sert (UNF5/8) (N6)	1 O X	50	070-021-2	Exhaust Cover	1
9	054-242-1	Regulator Dial	1	31	970-335-0	Pin (H) (4x34)	1 O X	PARTS FOR UW-140PR & PRL			
10	070-285-2	Rear Plate	1	32	971-163-0	Pin (2.5x23)	1 X	51	072-025-3	Handle	1 X
11	070-286-2	Cylinder	1	33	973-016-0	Roll Pin (2x16)	2	52	195-042-9	Silencer	1 X
12	070-287-2	Rotor	1	34	973-118-0	Roll Pin (3x18)	2 O X	53	195-780-9	Exhaust Stack	1 X
13	070-288-2	Blade	6	35	973-340-0	Roll Pin (6x10)	1	54	195-835-3	Filter	1 X
14	070-289-2	Front Plate	1	36	976-018-0	Spring (2.8x8.5)	1	55	975-600-0	Spacer (20x1)	1 X
15	070-761-2	Cylinder Notch Pin	1	37	976-066-0	Spring (4.6x9)	2	56	979-320-0	Inner Snap Ring (IRTW-20)	1 X
16	070-028-2	Hammer Casing	1 △	38	977-220-0	Cone Spring (9x10x25)	1 O X	57	990-916-0	O-Ring (SNS-18)	1 X
17	070-328-2	Anvil Bushing	1 △	39	981-004-0	Ball (3/16)	2				
18	070-036-2	Hammer Casing Connector	1	40	981-210-0	Ball (3/8)	1 O X				
19	070-311-2	Hammer Cam	1	41	982-403-0	Ball Bearing (EE-4)	2				
20	070-312-2	Hammer Cage	1	42	990-006-0	O-Ring (P8)	1				
21	070-313-2	Hammer	1	43	990-206-0	O-Ring (JW1516-6)	1				
22	070-321-3	Anvil (WR)	1	44	990-315-0	O-Ring (ARP568-032)	1				

FOOTNOTES

AIMCO also offers a complete line of standard & special adapters, bits, sockets and extensions.



10000 SE PINE,
 PORTLAND, OR 97216
 503-254-6600
 FAX 503-255-2615

When ordering spare parts, please specify tool type, part number and description.