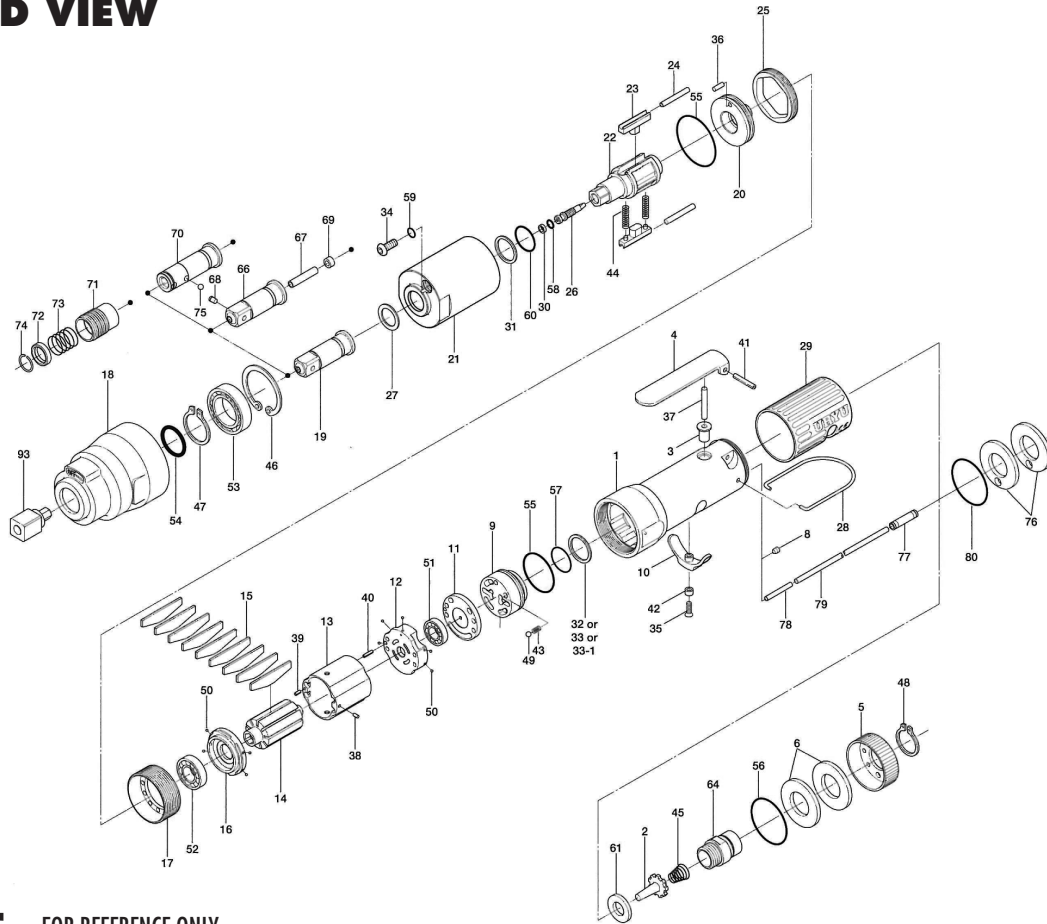


# UL-50S, UL-50SD SERIES OIL-PULSE WRENCHES

## EXPLODED VIEW



## PARTS LIST — FOR REFERENCE ONLY

Index Number	Part Number	Description	Qty.	Index Number	Part Number	Description	Qty.	Index Number	Part Number	Description	Qty.
1	106-025-8	Casing	1	31	944-212-0	Supporting Ring (12 x 16 x 1.5)	1	55	990-331-0	O-Ring (JW1530-21)	2
2	259-100-0	Valve	1	32	944-216-0	Supporting Ring (14 x 20 x 1.85)	1	56	990-603-0	O-Ring (28.5 x 1.3)	1
3	161-103-3	Valve Rod Bushing	1	33	944-218-0	Supporting Ring (14 x 20 x 1.9)	1	57	990-912-0	O-Ring (SNS-14)	1
4	196-107-7	Valve Lever	1	33-1	944-232-0	Supporting Ring (14 x 20 x 1.95)	1	58	990-970-0	O-Ring (SNS-2)(NOK)	1
5	128-782-8	Exhaust Cover	1	34	945-942-0	Hexagon Round Head Bolt (M4 x 6)	1	59	990-971-0	O-Ring (SNS-3)(NOK)	1
6	128-835-8	Filter (K200)	2	35	948-426-0	Allen Flush Head Screw (M3 x 12)	1	60	992-020-0	SU-Ring (Q12) (NTN)	1
64	128-091-8	Air Inlet Bushing	1	36	970-148-0	Pin (H) (2.5 x 3.8)	1	61	996-424-0	Packing (16 x 9 x 2)	1
8	147-064-6	Plug	1	37	970-221-0	Pin (H) (3 x 21.5)	1	66	891-558-1	Socket Spindle Assembly (P)	1
9	106-210-8	Reverse Valve	1	38	971-102-0	Pin (2 x 3.8)	1	67	891-559-1	Pipe	1
10	161-212-3	Reverse Lever	1	39	973-008-0	Roll Pin (2 x 8)	1	68	891-560-1	Socket Snap Pin	1
11	128-291-8	Rear Plate Spacer	1	40	973-018-0	Roll Pin (2 x 18)	1	69	975-001-0	Spacer (6 x 2.8 x 3)	1
12	129-285-2	Rear Plate	1	41	973-122-0	Roll Pin (3 x 22)	1	<b>PARTS FOR UL-50SD</b>			
13	106-286-8	Cylinder	1	42	975-004-0	Spacer (5.5 x 3.1 x 2.7)	1	70	158-350-6	Driver Anvil	1
14	143-287-3	Rotor	1	43	976-006-0	Spring (3 x 5) (0.4)	1	71	011-351-1	Bit Sleeve (1/8)	1
15	143-288-3	Blade (PC)	9	44	976-792-0	Spring (3.5 x 21) (0.45) (WPC)	2	72	011-352-1	Bit Spacer	1
16	128-289-8	Front Plate	1	45	977-227-0	Cone Spring (9 x 12 x 25) (0.8)	1	73	976-327-0	Spring (13.5 x 11) (0.9)	1
17	147-036-2	Hammer Casing Connector	1	46	979-327-0	Inner Snap Ring (IRTW-28)	1	74	978-117-0	Snap Ring (11.7 x 1)	1
18	143-439-3	Front Casing	1	47	979-356-0	Inner Snap Ring (ISTW-15)	1	75	981-002-0	Ball (1/8)	1
19	143-454-3	Socket Spindle (P)	1	48	979-358-0	Inner Snap Ring (ISTW-17)	1	<b>PARTS FOR (TM) TYPE</b>			
20	143-901-3	Rear Liner Plate	1	49	981-002-0	Ball (1/8)	1	76	851-053-1	Filter (K200)	2
21	143-902-3	Line	1	50	981-045-0	Ball (1.5 mm)	9	77	933-250-0	One-Touch Connector (SLS-04)	1
22	143-319-3	Anvil	1	51	982-014-0	Ball Bearing (607)	1	78	935-240-0	Nylon Tube (18NY)	1
23	143-440-3	Driving Blade	2	52	982-902-0	Ball Bearing (6901)	1	79	935-350-0	Polyurethane Hose (F-1504)	1
24	143-974-3	Roller (2.5 x 22)	2	53	982-923-0	Ball Bearing (6902ZZ)	1	80	990-333-0	O-Ring (JW1530-23)	1
25	143-906-3	Liner Casing Cover	1	54	990-156-0	O-Ring (P16) (NTN)	1	<b>ACCESSORIES</b>			
26	143-970-3	Relief Valve	1					90	939-090-0	Allen Wrench 1.5 (55 x 55)	1
27	178-327-0	Anvil Front Spacer	1					93	143-242-2	Reglating Attachment	1
28	191-790-1	Suspension Bail	1					<b>FOOTNOTES</b>			
29	128-842-8	Handle Cover	1								
30	944-002-0	Supporting Ring (2.6 x 4.5 x 1)	1								



10000 SE PINE  
PORTLAND, OR 97216  
503-254-6600  
FAX 503-255-2615

When ordering spare parts, please specify  
tool type, part number, and description.