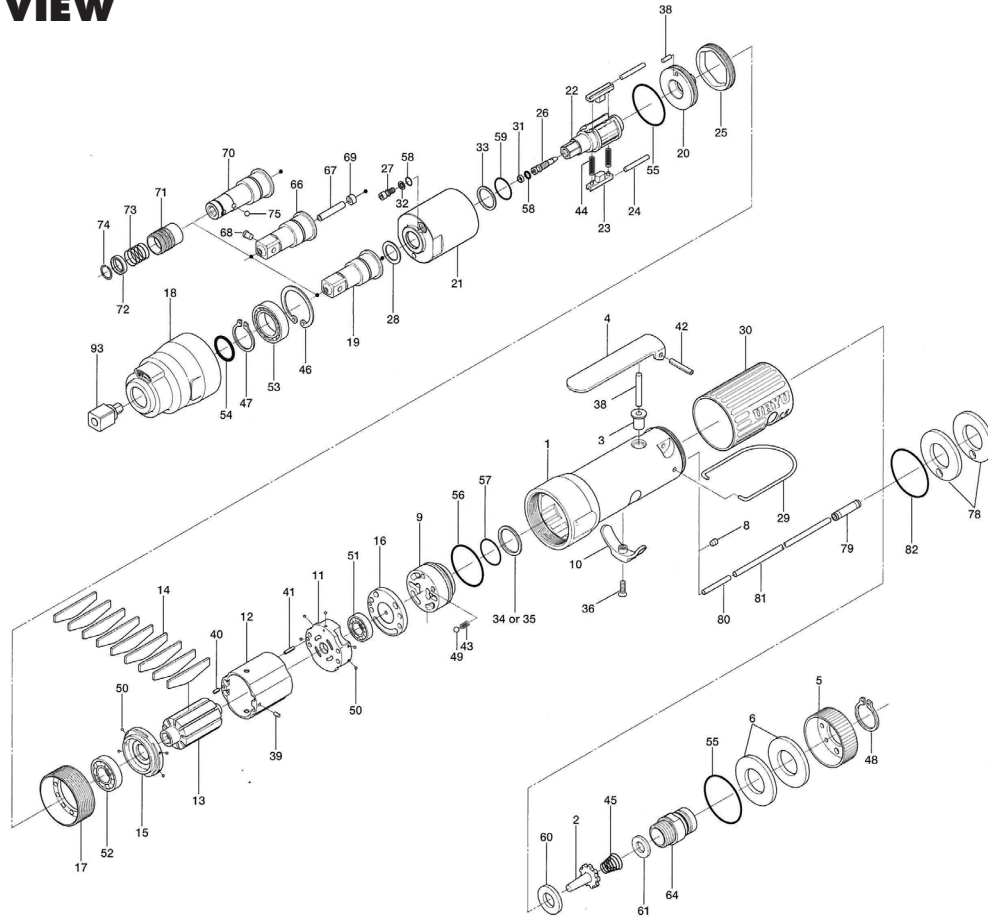


# UL-30S, UL-30SD SERIES OIL-PULSE WRENCHES

## EXPLODED VIEW



## PARTS LIST — FOR REFERENCE ONLY

Index Number	Part Number	Description	Qty.	Index Number	Part Number	Description	Qty.	Index Number	Part Number	Description	Qty.
1	106-025-5	Handle	1	30	128-842-5	Handle Cover	1	58	990-970-0	O-Ring (SNS-2) (NOK)	2
2	259-100-0	Valve	1	31	944-002-0	Supporting Ring (2.6 x 4.5 x 1)	1	59	992-019-0	SU-Ring (Q10) (NTN)	1
3	161-103-3	Valve Rod Bushing	1	32	944-003-0	Supporting Ring (3 x 5 x 1)	1	60	996-409-0	Packing (12 x 2.5 x 2)	1
4	196-107-7	Valve Lever	1	33	944-211-0	Supporting Ring (10 x 14 x 1.5)	1	61	996-424-0	Packing (16 x 9 x 2)	1
5	128-782-5	Exhaust Cover	1	34	944-216-0	Supporting Ring (14 x 20 x 1.85)	1	66	891-565-1	Socket Spindle Assembly (P)	1
6	128-835-5	Filter (K200)	2	35	944-218-0	Supporting Ring (14 x 20 x 1.9)	1	67	891-559-1	Pipe	1
64	128-091-8	Air Inlet Bushing	1	36	948-426-0	Allen Flush Head Screw (M3 x 12)	1	68	891-560-1	Socket Snap Pin	1
8	147-064-6	Plug	1	37	970-148-0	Pin (H) (2.5 x 3.8)	1	69	975-001-0	Spacer (6 x 2.8 x 3)	1
9	106-210-5	Reverse Valve	1	38	970-220-0	Pin (H) (3 x 20)	1	<b>PARTS FOR UL-30SD</b>			
10	161-212-3	Reverse Lever	1	39	971-102-0	Pin (2 x 3.8)	1	70	143-350-2	Driver Anvil	1
11	128-285-5	Rear Plate	1	39	971-102-0	Pin (2 x 3.8)	1	71	011-351-1	Bit Sleeve (1/8)	1
12	106-286-5	Cylinder	1	40	973-008-0	Roll Pin (2 x 8)	1	72	011-352-1	Bit Spacer	1
13	143-287-0	Rotor	1	41	973-018-0	Roll Pin (2 x 18)	1	73	976-327-0	Spring (13.5 x 11) (0.9)	1
14	143-288-0	Blade (PC)	9	42	973-122-0	Roll Pin (3 x 22)	1	74	978-117-0	Snap Ring (11.7 x 1)	1
15	128-289-5	Front Plate	1	43	976-006-0	Spring (3 x 5) (0.4)	1	75	981-002-0	Ball (1/8)	1
16	128-291-5	Rear Plate Spacer	1	44	976-803-0	Spring (2.8 x 18) (0.4) (WPC)	2	<b>PARTS FOR (TM) TYPE</b>			
17	143-036-0	Hammer Casing Connector	1	45	977-227-0	Cone Spring (9 x 12 x 25) (0.8)	1	78	851-065-1	Filter (K200)	2
18	143-439-0	Front Casing	1	46	979-324-0	Inner Snap Ring (IRTW-24)	1	79	933-250-0	One-Touch Connector (SLS-04)	1
19	143-454-0	Socket Spindle	1	47	979-353-0	Inner Snap Ring (ISTW-12)	1	80	935-240-0	Nylon Tube (18NY)	1
20	143-901-0	Rear Liner Plate	1	48	979-358-0	Inner Snap Ring (ISTW-17)	1	81	935-350-0	Polyurethane Hose (F-1504)	1
21	142-902-8	Liner	1	49	981-002-0	Ball (1/8)	1	82	990-331-0	O-Ring (JW1530-21)	1
22	143-319-0	Anvil	1	50	981-045-0	Ball (1.5)	9	<b>ACCESSORIES</b>			
23	143-440-0	Driving Blade	2	51	982-014-0	Ball Bearing (607)	1	90	939-090-0	Allen Wrench 1.5 (55 x 55)	1
24	143-974-0	Roller (2.5 x 21) (C)	2	52	982-901-0	Ball Bearing (6900)	1	93	143-242-2	Regulating Attachment	1
25	143-906-0	Liner Casing Cover	1	53	982-922-0	Ball Bearing (6901ZZ)	1				
26	143-970-3	Relief Valve	1	54	990-012-0	O-Ring (P12.5)	1				
27	194-742-3	Oil Plug	1	55	990-329-0	O-Ring (JW1530-19)	2				
28	143-327-1	Anvil Front Spacer	1	56	990-331-0	O-Ring (JW1530-21)	1				
29	010-790-1	Suspension Bail	1	57	990-912-0	O-Ring (SNS-14)	1				

## FOOTNOTES



10000 SE PINE  
PORTLAND, OR 97216  
503-254-6600  
FAX 503-255-2615

When ordering spare parts, please specify  
tool type, part number, and description.