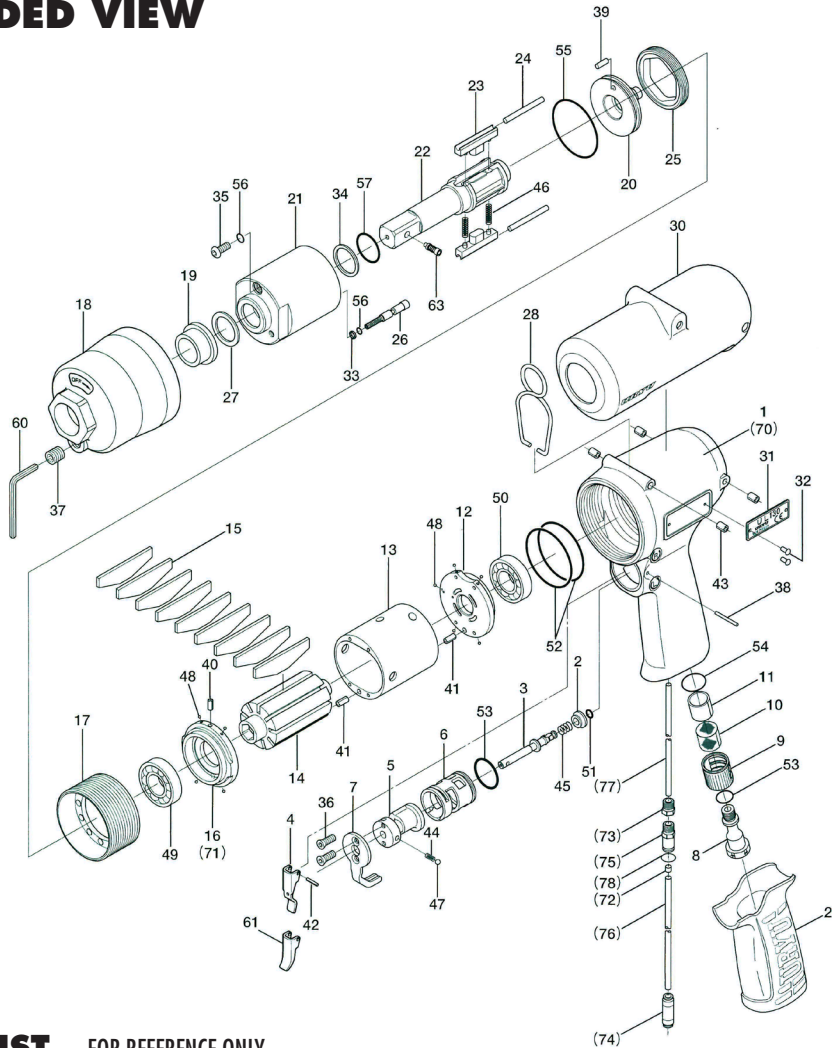


# UL-130 SERIES OIL-PULSE WRENCHES

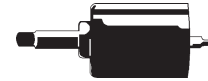
## EXPLODED VIEW



### 141-984-0 Handle Assembly

Components: #1, #2, #3, #4, #5, #6, #7, #36, #38, #42, #44, #45, #47, #51, #53

### Liner Casing Assembly



Part #801-484-1

## PARTS LIST — FOR REFERENCE ONLY

Index Number	Part Number	Description	Qty.	Index Number	Part Number	Description	Qty.	Index Number	Part Number	Description	Qty.
1	141-025-0	Handle	1 ■	26	155-970-0	Relief Valve	1	51	990-306-0	O-Ring (ARP-568-004) (H)	1 ■
2	130-100-2	Valve	1 ■	27	147-327-9	Anvil Front Spacer	1	52	990-611-0	O-Ring (51.5 x 2)	2
3	130-104-2	Valve Rod	1 ■	28	174-790-0	Suspension Ring	1	53	990-916-0	O-Ring (SNS-18)	2 ■
4	130-107-2	Valve Lever	1 ■	29	130-842-2	Handle Cover	1	54	990-921-0	O-Ring (SNS-22.4)	1
5	130-210-2	Reverse Valve	1 ■	30	141-840-0	Casing Protector	1	55	990-933-0	O-Ring (SNS-39)	1 ●
6	130-211-2	Reverse Valve Bushing	1 ■	31	141-924-0	Name Plate	1	56	990-971-0	O-Ring (SNS-3) (NOK)	2 ●
7	130-212-2	Reverse Lever	1 ■	32	930-205-0	Driver Screw Rivet (No.0 x 2.6)	2	57	992-021-0	SU-Ring (Q16) (NTN)	1 ●
8	130-091-2	Air Inlet Bushing	1	33	944-003-0	Supporting Ring (3 x 5 x 1)	1 ●	63	891-304-1	Socket Pin Assembly (1/2)	1
9	130-780-2	Exhaust Stack	1	34	944-210-0	Supporting Ring (16 x 19.9 x 1)	1 ●	<b>PARTS FOR (TM) TYPE</b>			
10	130-042-2	Silencer	1	35	945-942-0	Hexagon Round Head Bolt (M4 x 6)	1 ●	70	851-958-1	Handle	1
11	130-835-3	Filter (K50)	1	36	948-423-0	Allen Flush Head Screw (M3 x 6)	2 ■	71	851-959-1	Front Plate	1
12	130-285-2	Rear Plate	1	37	966-099-0	Allen Head Plug (NPT1/16GDL)	1	73	1/16BK1-10F	Connecting Screw	1
13	123-286-6	Cylinder	1	38	971-126-0	Pin (2 x 26)	1 ■	74	909-442-0	Quick Exhaust (AQ240F-04-00)	1
14	141-287-0	Rotor	1	39	972-105-0	Pin (3.5 x 5)	1	75	68ML-5/32 x 10/32	One-Touch Connector	1
15	123-288-6	Blade (PC)	9	40	973-006-0	Roll Pin (2 x 6)	1	76	935-350-0	Polyurethane Hose (F-1504)	1
16	123-289-6	Front Plate	1	41	973-108-0	Roll Pin (3 x 8)	2	77	935-358-0	Polyurethane Hose (TU-0212)	1
17	141-036-0	Hammer Casing Connector	1	42	973-120-0	Roll Pin (3 x 20)	1 ■	<b>ACCESSORIES</b>			
18	141-439-0	Front Casing	1	43	973-308-0	Roll Pin (5 x 8)	4	59	939-091-0	Allen Wrench (1.5)	1
19	189-328-8	Anvil Bushing	1	44	976-006-0	Spring (3 x 5) (0.4)	1 ■	60	939-105-0	Allen Wrench (4)	1
20	141-901-0	Rear Liner Plate	1	45	976-643-0	Spring (7.5 x 9.7) (0.9)	1 ■	<b>OPTIONAL ACCESSORIES</b>			
21	141-902-1	Liner	1	46	976-807-0	Spring (4.5 x 38) (0.6) WPC	2 ●	61	130-107-4	Valve Lever	1
22	141-319-0	Anvil	1	47	981-002-0	Ball (1/8)	1 ■	<b>FOOTNOTES</b>			
23	130-440-2	Driving Blade	2	48	981-045-0	Ball (1.5)	9	● = Items in Pulse Repair Kit UL-130-PRK			
24	130-974-2	Roller 3 x 40	2	49	982-905-0	Ball Bearing (6904)	1	■ = 141-984-0 Handle Assembly Components			
25	130-906-2	Liner Casing Cover	1	50	982-950-0	Ball Bearing (16002)	1				



10000 SE PINE  
PORTLAND, OR 97216  
503-254-6600  
FAX 503-255-2615

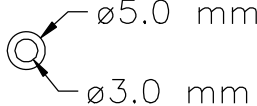
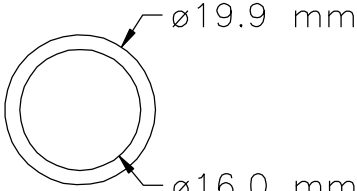
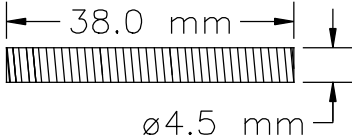
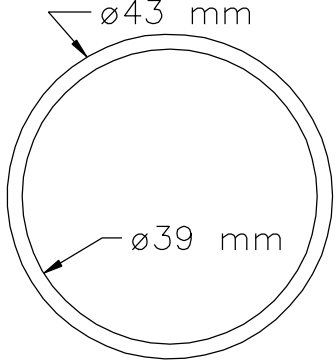
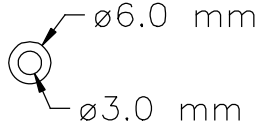
When ordering spare parts, please specify  
tool type, part number, and description.

### FOOTNOTES

- = Items in Pulse Repair Kit UL-130-PRK
- = 141-984-0 Handle Assembly Components

# UL-130-PRK

(Kit contains following parts)

#/#	Bin Location	Part Number	QTY	Description	Material	Drawing / Scketch
1	PA10	944-003-0	1	Support Ring 3.0x5.0x1	Teflon-White	
2	PA10	944-210-0	1	Support Ring 16x19.9x1	Teflon-White	
3	PA3K3	976-807-0	2	Spring 4.5x38.0 (0.6)WPC	Spring wire ø.60 mm	
4	PA1B	990-933-0	1	O-Ring (SNS-39) 39x43x2	Buna-Black	
5	PA1C	990-971-0	2	O-Ring (SNS-3) (NOK)	Buna-Black	
6	PA1P	992-021-0	1	SU-Ring (Q-19) (NTN) 16x21x2.5	Buna-Black	