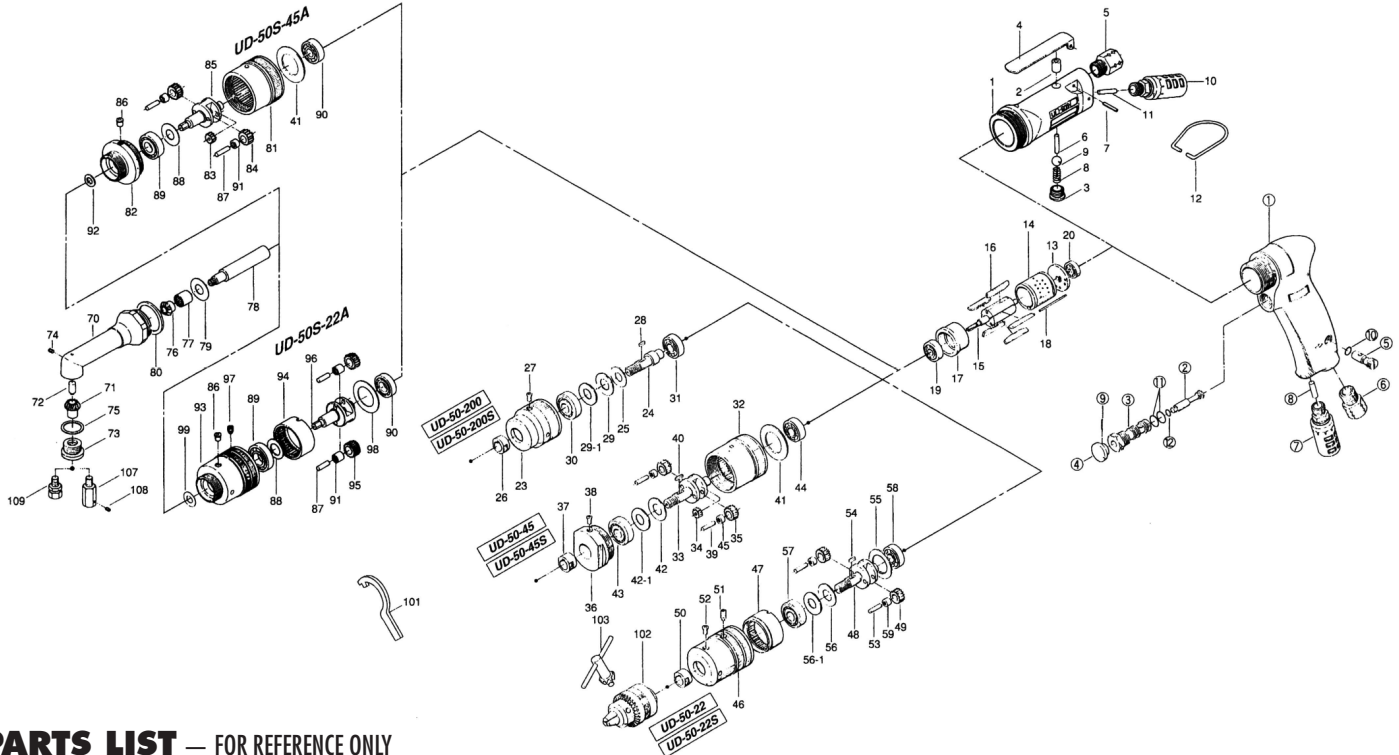


UD-50, UD-50S [-22(A), -45(A), -200] SERIES AIR DRILLS

EXPLODED VIEW



PARTS LIST — FOR REFERENCE ONLY

Index Number	Part Number	Description	Qty.
--------------	-------------	-------------	------

619-984-4 CASING ASSEMBLY (STRAIGHT HANDLE)			
(Components are marked with *)			
1	619-025-4	Casing	1 *
2	553-103-1	Valve Rod Bushing	1 *
3	201-108-1	Valve Plug	1 *
4	500-107-1	Valve Lever	1 *
5	191-091-5	Air Inlet Bushing	1 *
6	970-321-0	Pin (H) (4 x 21)	1 *
7	973-124-0	Roll Pin (3 x 24)	1 *
8	977-154-0	Cone Spring (7 x 7.5 x 17)	1 *
9	981-030-0	Polyurethane Ball (3/8)	1 *
10	235-885-0	Silencer	x 1 *
11	611-744-0	Silencer Tube	x 1 *
12	010-790-1	Suspension Ring	1

611-984-1 HANDLE ASSEMBLY (PISTOL HANDLE)			
(Components are marked with x)			
1	611-025-1	Handle	1 x
2	603-100-2	Valve	1 x
3	606-101-1	Valve Bushing	1 x
4	603-107-2	Throttle Trigger	1 x
5	023-240-1	Regulator Valve	1 x
6	191-091-5	Air Inlet Bushing	1 x
7	235-885-0	Silencer	1 x
8	611-744-0	Silencer Tube	1 x
9	973-010-0	Roll Pin (2 x 10)	1 x
10	990-003-0	O-Ring (P-5)	1 x
11	990-610-0	O-Ring (8 x 2)	2 x
12	990-203-0	O-Ring (JW1516-3)	1 x

COMMON PARTS			
13	603-285-1	Rear Plate	1
14	603-286-1	Cylinder	1
15	603-287-1	Rotor	1
16	603-288-1	Blade	1
17	603-289-1	Front Plate	1
18	971-021-0	Pin (1.8 x 44)	1
19	982-021-0	Ball Bearing (626)	1
20	982-026-0	Ball Bearing (634)	1

611-005-8 GEAR BOX ASSEMBLY FOR UD-50-200 & UD-50S-200			
23	611-039-8	Anvil Casing	1
24	611-319-7	Anvil	1
25	611-334-7	Anvil Spacer	1
26	603-411-1	Chuck Retainer	1
27	968-130-0	Grease Cup (3/16)	1
28	974-008-0	Key (3 x 8)	1

Index Number	Part Number	Description	Qty.
--------------	-------------	-------------	------

611-005-5 GEAR BOX ASSEMBLY FOR UD-50-45 & UD-50S-45			
29	975-149-0	Spacer (22 x 12.5 x 0.4)	1
29-1	975-752-0	Adjusting Spacer (15 x 10 x 1)	1
30	982-140-0	Ball Bearing (6000Z)	1
31	982-402-0	Ball Bearing (EE-3)	1
611-005-1 GEAR BOX ASSEMBLY FOR UD-50-22 & UD-50S-22			
32	611-029-5	Gear Casing	1
33	674-319-1	Anvil	1
34	674-460-1	Rotor Gear	1
35	674-470-1	Planet Gear	1
36	674-070-1	Gear Casing Cover	1
37	603-411-1	Chuck Retainer	1
38	968-130-0	Grease Cup (3/16)	1
39	972-114-0	Roller Pin (4 x 13.8)	1
40	974-008-0	Key (3 x 8)	1
41	611-296-4	Front Plate Spacer	1
42	975-162-0	Spacer (24 x 12.5 x 0.4)	1
42-1	975-752-0	Adjusting Spacer (15 x 10 x 1)	1
43	982-140-0	Ball Bearing (6000Z)	1
44	982-402-0	Ball Bearing (EE-3)	1
45	988-450-0	Needle Bearing (HK-0408)	1

611-005-1 GEAR BOX ASSEMBLY FOR UD-50-22 & UD-50S-22			
46	611-029-1	Gear Casing	1
47	611-465-1	Internal Gear	1
48	603-319-1	Anvil	1
49	603-470-1	Planet Gear	1
50	603-411-1	Chuck Retainer	1
51	952-205-0	Allen Head Screw (M5 x 5)	1
52	968-130-0	Grease Cup (3/16)	1
53	972-114-0	Roller Pin (4 x 13.8)	1
54	974-008-0	Key (3 x 8)	1
55	975-244-0	Spacer (31.5 x 26 x 2)	1
56	975-162-0	Spacer (24 x 12.5 x 0.4)	1
56-1	975-752-0	Adjusting Spacer (15 x 10 x 1)	1
57	982-140-0	Ball Bearing (6000Z)	U
58	982-402-0	Ball Bearing (EE-3)	1
59	988-450-0	Needle Bearing (HK-0408)	2

602-005-1 MIDDLE SHAFT CASING ASSEMBLY			
70	602-034-1	Middle Shaft Casing	1
71	602-430-1	Driven Gear	1
72	602-431-1	Driven Gear Spindle	1
73	602-075-1	Casing Front Plate	1
74	953-104-0	Allen Head Screw (M4 x 4)	1
75	975-760-0	Adjusting Spacer (20 x 17 x 1)	1
76	602-420-1	Driving Gear	1

Index Number	Part Number	Description	Qty.
--------------	-------------	-------------	------

479-005-4 UD-50S-45A GEAR BOX ASSEMBLY			
77	602-455-1	Middle Shaft Bushing	1
78	602-500-1	Middle Shaft	1
79	975-750-0	Adjusting Spacer (14 x 8 x 1)	1
80	975-795-0	Adjusting Spacer (29 x 26 x 1)	1

479-005-0 UD-50S-22A GEAR BOX ASSEMBLY			
81	611-029-5	Gear Casing	1
41	611-296-4	Front Plate Spacer	1
82	479-037-4	Gear Casing Connector	1
83	674-460-1	Rotor Gear	1
84	674-470-1	Planet Gear	2
85	479-480-4	Gear Cage	1
86	968-130-0	Grease Cup (3/16)	1
87	972-114-0	Needle Roller (4 x 13.8)	2
88	975-162-0	Spacer (24 x 12.5 x 0.4)	1
89	982-100-0	Ball Bearing (6000)	1
90	982-402-0	Ball Bearing (EE-3)	1
91	988-450-0	Needle Bearing (HK-0408)	2
92	602-483-1	Gear Cage Spacer	1

479-005-0 UD-50S-22A GEAR BOX ASSEMBLY			
93	479-029-0	Gear Casing	1
94	611-465-1	Internal Gear	1
95	603-470-1	Planet Gear	2
96	479-480-0	Gear Cage	1
97	952-205-0	Allen Head Screw (M5 x 5)	1
86	968-130-0	Grease Cup (3/16)	1
87	972-114-0	Needle Roller (4 x 13.8)	2
88	975-162-0	Spacer (24 x 12.5 x 0.4)	1
98	975-244-0	Spacer (31.5 x 26 x 2)	1
89	982-100-0	Ball Bearing (6000)	1
90	982-402-0	Ball Bearing (EE-3)	1
91	988-450-0	Needle Bearing (HK-0408)	2
99	479-483-1	Gear Cage Spacer	1

ACCESSORIES			
101	937-006-0	Spanner (4 x 21 x 150)	1
For UD-50 & 50S Series			
102	923-070-0	Chuck (8 mm)	1
103	927-051-0	Chuck Handle (6.5)	1
For UD-50S-22A & 45A Series			
104	936-100-0	Spanner (8 x 2 x 90)	1
105	936-512-0	Spanner (12)	1
106	939-108-0	Allen Wrench (1.5)	1
107	924-011-0	Drilling Adapter (4 mm)	1
108	953-053-0	Allen Head Screw (M3 x 3)	1
109	923-100-0	Cone Jaw Chuck Assembly (opt.)	1

FOOTNOTES

When ordering spare parts, please specify tool type, part number, and description.



10000 SE PINE
PORTLAND, OR 97216
503-254-6600
FAX 503-255-2615