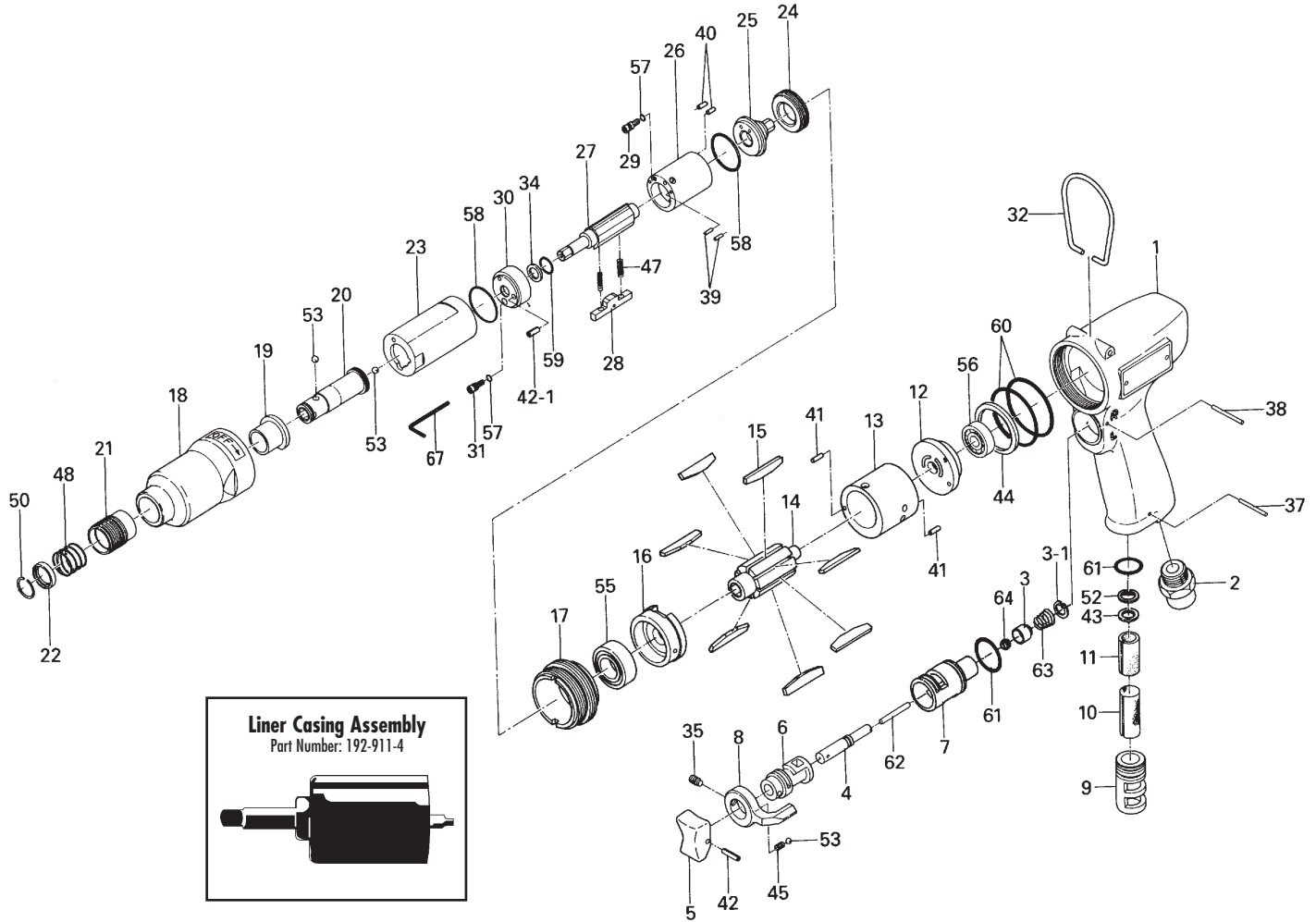
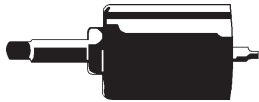


U-350D OIL-PULSE TOOL

EXPLODED VIEW



Liner Casing Assembly
Part Number: 192-911-4



PARTS LIST — FOR REFERENCE ONLY

Index Number	Part Number	Description	Qty.	Index Number	Part Number	Description	Qty.	Index Number	Part Number	Description	Qty.
1	177-025-5	Casing	1	22	011-352-1	Bit Spacer	1	45	976-006-0	Spring (3 x 5)	1
2	480-091-8	Air Inlet Bushing	1	23	196-905-6	Liner Casing	1	47	976-242-0	Spring (2.8 x 13.5)	2
3	480-100-9	Valve	1	24	196-906-6	Liner Casing Setter	1	48	976-327-0	Spring (13.5 x 11)	1
3-1	979-002-0	Inner Snap Ring (9)	1	25	177-901-0	Rear Liner Plate	1	50	978-117-0	Snap Ring (11.7 x 1.0)	1
4	480-103-9	Valve Rod Bushing	1	26	196-902-6	Liner	1	52	979-004-0	Inner Snap Ring (11)	1
5	177-107-5	Valve Lever	1	27	196-319-6	Anvil	1	53	981-002-0	Ball (1/8)	3
6	480-210-9	Reverse Valve	1	28	192-440-4	Driving Blade	1	55	982-100-0	Ball Bearing (6000)	1
7	480-211-9	Reverse Valve Bushing	1	29	196-970-6	Release Valve	1	56	982-401-0	Ball Bearing (EE-2)	1
8	480-212-8	Reverse Lever	1	30	196-904-6	Front Liner Plate	1	57	990-319-0	O-Ring (ARPS68-002)	2
9	480-780-8	Exhaust Stack	1	31	196-742-6	Oil Plug	1	58	990-916-0	O-Ring (SNS-18)	2
10	182-042-2	Silencer	1	32	401-790-1	Suspension Ring	1	59	990-952-0	O-Ring (P6) (NOK)	1
11	177-835-6	Filter	1	34	944-006-0	Supporter Ring (5.85 x 9.1 x 1)	1	60	990-337-0	O-Ring (JW1530-27)	2
12	182-285-2	Rear Plate	1	35	952-106-0	Allen Head Dog Point Screw (M4 x 6)	1	61	990-912-0	O-Ring (SNS-14)	2
13	192-286-4	Cylinder	1	37	971-120-0	Pin (2 x 20)	1	62	970-228-0	Pin (3 x 28)	1
14	177-287-0	Rotor	1	38	971-123-0	Pin (2 x 23)	1	63	977-150-0	Cone Spring (6.8 x 8.5 x 8)	1
15	177-288-2	Blade (Teflon Coated)	7	39	972-010-0	Roller Pin (1.5 x 6.8)	2	64	981-206-0	Ball (1/4)	1
16	192-289-4	Front Plate	1	40	972-011-0	Roller Pin (1.5 x 4.8)	2	65	981-045-0	Ball (1.5mm)	1
17	192-035-4	Handle Connector	1	41	973-008-0	Roll Pin (2 x 8)	2				
18	192-439-4	Front Casing	1	42	973-014-0	Roll Pin (2 x 14)	1				
19	190-328-6	Anvil Bushing	1	42-1	969-449-0	Pin (G) (3 x 6)	1				
20	196-350-7	Driver Anvil	1	43	975-025-0	Spacer (11 x 3.5 x 2)	1				
21	011-351-1	Bit Sleeve	1	44	975-251-0	Spacer (32.5 x 26 x 2)	1				

ACCESSORIES

67	939-091-0	Allen Wrench (1.5mm)	1
----	-----------	----------------------	---

AIMCO also offers a complete line of standard & special adapters, bits, sockets and extensions.

FOOTNOTES



10000 SE Pine Street
Portland, OR 97216
503-254-6600
FAX 503-255-2615

When ordering spare parts, please specify tool type, part number and description.