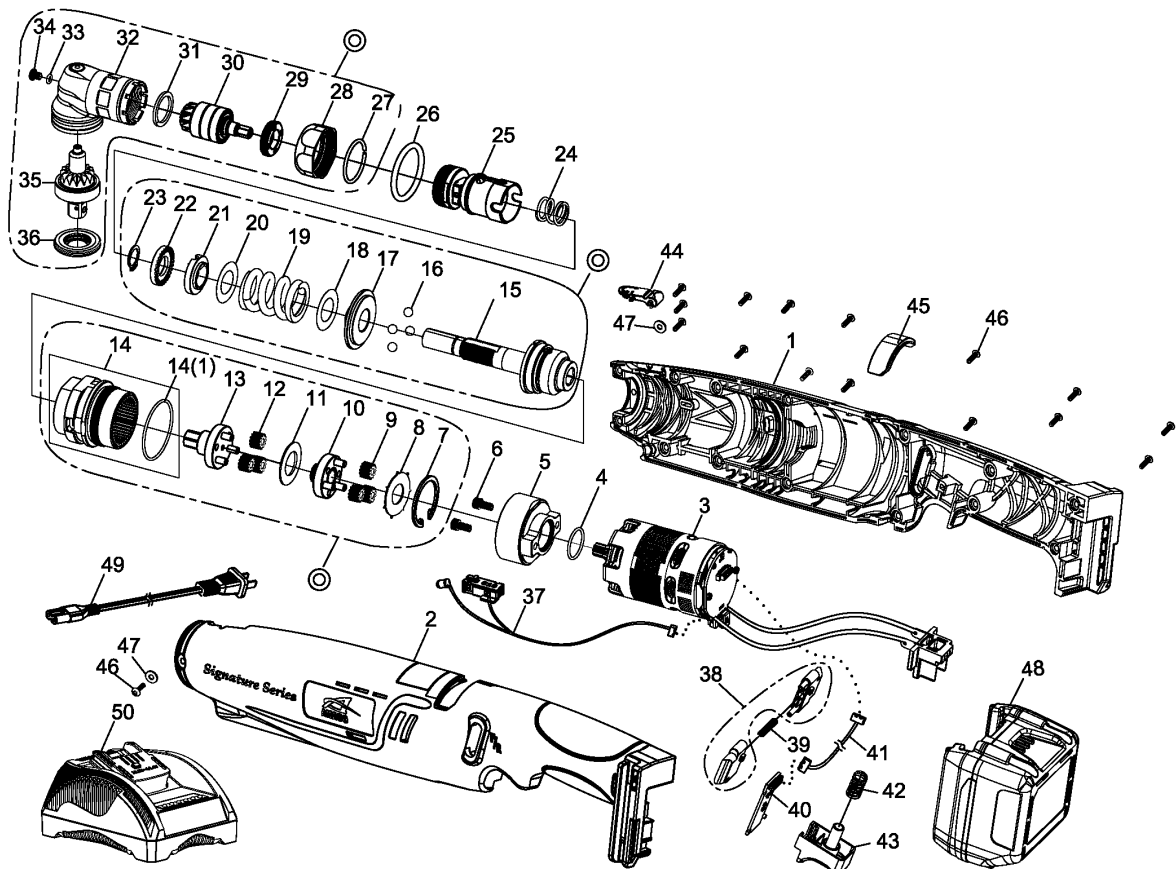


# SPC-A21638 18V CORDLESS SHUT OFF ANGLE WRENCH (LI-ION)

## EXPLODED VIEW



## PARTS LIST — FOR REFERENCE ONLY

Index Number	Part Number	Description	Qty.	Index Number	Part Number	Description	Qty.	Index Number	Part Number	Description	Qty.	
1	C01WR#G2	Upper Housing	1	<b>GEAR BOX UNIT</b>				<b>ANGLE HOUSING UNIT</b>				
2	B02WR-AM#G2	Lower Housing	1	7	B50WR16	Gear Box Unit	1	27	B42WR3L#BZ	Angle Housing Unit	1	
3	B83WR16	Brushless Motor Assembly w/Driver	1	8	000-3128	Snap Ring (RTW-28)	1	28	D44WR108B	Collar	1	
4	000-4110	O-Ring (16 x 1.5)	1	9	D39WR	Washer	1	29	D54WR108B#BZ	Lock Nut	1	
5	D51SC108B	Motor Holder	1	10	D49WR-9	Planet Gear	3	30	D54WR108B-1B	Lock Nut	1	
6	000-0242	Screw (M4 x 8L)	2	11	B51WR-6	Gear Cage Assembly	1	31	B49WR144B-8	Main Bevel Gear Assembly	1	
25	B51WR	Connecting Holder Assembly	1	12	D39WR-8	Washer	1	32	D39WR144B	Washer	1	
26	000-4120Y	Marking Ring (P32, Yellow)	1	13	D49WR-10	Planet Gear	3	33	B42WR-1#BZ	Angle Housing Assembly	1	
37	B75WR	Sensor & LED Assembly	1	14	B51WR-11	Gear Plate Assembly	1	34	000-4114	O-Ring (3 x 1.5)	1	
38	B09PW15-1#B1	F/R Valve (1 set x 2 pcs)	1	14(1)	B50WR	Gear Box Assembly	1	35	000-1340	Screw (M4 x 5L)	1	
39	D48PW15-1	Spring	1		14(1)	000-4118	O-Ring (28 x 1.5)	1*	36	B49WR144B3L-9	Bevel Gear Assembly	1
40	E76WR	PC Board	1	<b>CLUTCH UNIT</b>				36	D54WR108B-2B	Lock Nut	1	
41	E86SC	Connector Wire	1	15	B43WR16	Clutch Unit	1					
42	D48PW15	Spring	1	16	B29WR	Clutch Assembly	1					
43	B09PW15#B1	Trigger Assembly	1	17	000-3853	Steel Ball (7/32")	4					
44	C10SC108B-2#B1	Cover	1	18	D39WR-2	Washer	1					
45	C10WR#W2	Cover	1	19	D39WR-7	Washer	1					
46	000-1430C	Screw (M3 x P0.5 x 10L)	16	20	D48WR-2	Spring (Yellow)	1					
47	000-1531B	Washer (3.3 x 8)	2	21	D39WR-5	Washer (White)	1					
48	BB180C-320	18V Li-Ion 2.0Ah Battery	1	22	D39SC108B-2	Adjust Washer	1					
49	E86B	Power Card	1	22	D54SC108B	Adjust Nut	1					
50	B84192B	Battery Charger	1	23	000-3012	Snap Ring (STW-12)	1					
				24	D48WR	Spring	1					

AIMCO also offers a complete line of standard & special adapters, bits, sockets, and extensions

### FOOTNOTES



10000 SE PINE  
PORTLAND, OR 97216  
503-254-6600  
FAX 503-255-2615

When ordering spare parts, please specify tool type, part number, and description.