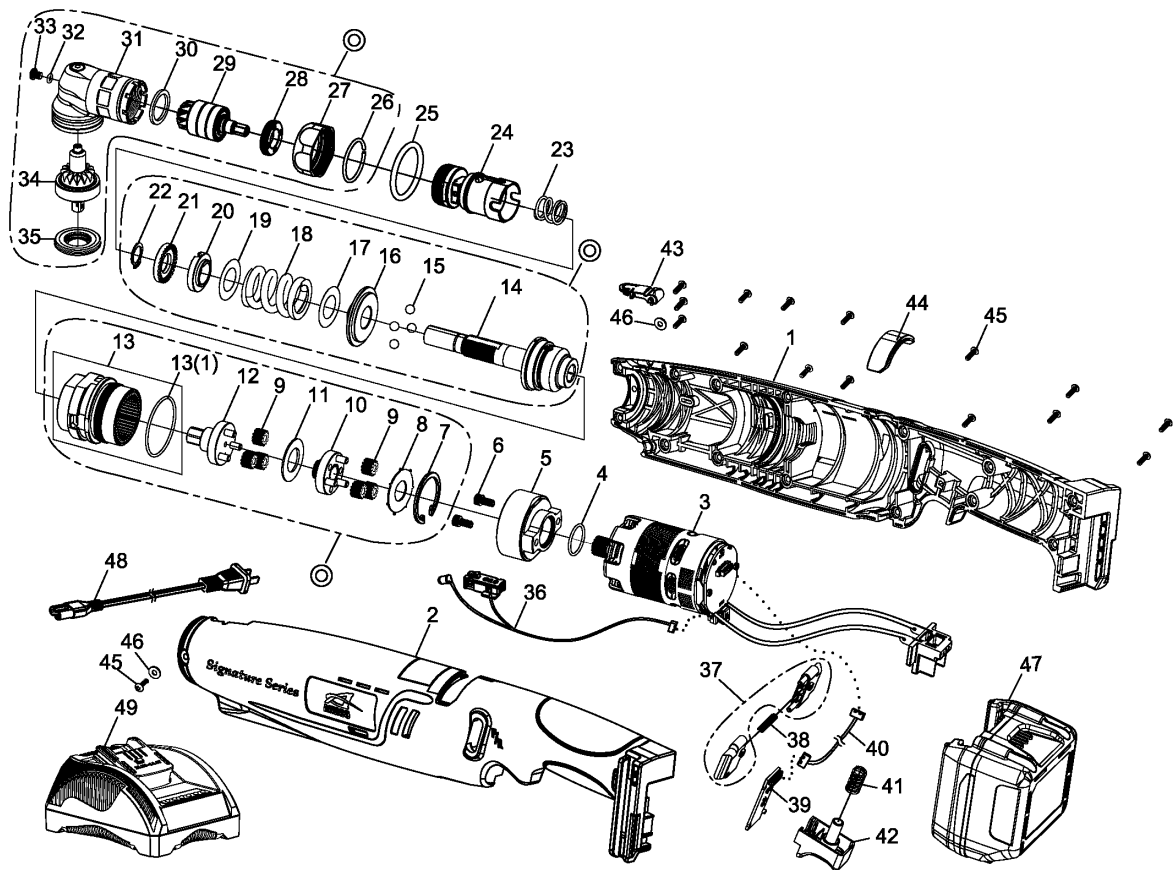


SPC-A21025 18V CORDLESS SHUT OFF ANGLE WRENCH (LI-ION)

EXPLODED VIEW



PARTS LIST — FOR REFERENCE ONLY

Index Number	Part Number	Description	Qty.	Index Number	Part Number	Description	Qty.	Index Number	Part Number	Description	Qty.	
1	C01WR#G2	Upper Housing	1	45	000-1430C	Screw (M3 × P0.5 × 10L)	16	17	D39WR-7	Washer	1	
2	B02WR-AM#G2	Lower Housing	1	46	000-1531B	Washer (3.3 × 8)	2	18	D48WR-1	Spring (Red)	1	
	B83WR10-1-SK	Brushless Motor Units	1	47	BB180C-320	18V Li-Ion 2.0Ah Battery	1	19	D39WR-5	Washer (White)	1	
3	B83WR10	Brushless Motor Assembly w/Driver	1*	48	E86B	Power Cord	1	20	D39SC108B-2	Adjust Washer	1	
4	000-4110	O-Ring (16 × 1.5)	1*	49	B84192B	Battery Charger	1	21	D54SC108B	Adjust Nut	1	
5	D51SC108B	Motor Holder	1*					22	000-3012	Snap Ring (STW-12)	1	
6	000-0242	Screw (M4 × 8L)	2*	GEAR BOX UNIT					ANGLE HOUSING UNIT			
23	D48WR	Spring	1		B50WR10	Gear Box Unit	1		B42WR2#BZ	Angle Housing Unit	1	
24	B51WR	Connecting Holder Assembly	1	7	000-3128	Snap Ring (RTW-28)	1	26	D44WR108B	Collar	1	
25	000-4120R	Marking Ring (P32, Red)	1	8	D39WR	Washer	1	27	D54WR108B#BZ	Lock Nut	1	
34	B49WR144B2-9	Bevel Gear Assembly	1	9	D49WR-8	Planet Gear	6	28	D54WR108B-1B	Lock Nut	1	
35	D54WR108B-2B	Lock Nut	1	10	B51WR-7	Gear Cage Assembly	1	29	B49WR144B-8	Main Bevel Gear Assembly	1	
36	B75WR	Sensor & LED Assembly	1	11	D39WR-8	Washer	1	30	D39WR144B	Washer	1	
37	B09PW15-1#B1	F/R Valve (1 set × 2 pcs)	1	12	B51WR-9	Gear Plate Assembly	1	31	B42WR-1#BZ	Angle Housing Assembly	1	
38	D48PW15-1	Spring	1	13	B50WR	Gear Box Assembly	1	32	000-4114	O-Ring (3 × 1.5)	1	
39	E76WR	PC Board	1	13(1)	000-4118	O-Ring (28 × 1.5)	1*	33	000-1340	Screw (M4 × 5L)	1	
40	E86SC	Connector Wire	1	CLUTCH UNIT					AIMCO also offers a complete line of standard & special adapters, bits, sockets, and extensions			
41	D48PW15	Spring	1		B43WR10	Clutch Unit	1					
42	B09PW15#B1	Trigger Assembly	1	14	B29WR	Clutch Assembly	1					
43	C10SC108B-2#B1	Cover	1	15	000-3853	Steel Ball (7/32")	4					
44	C10WR#W2	Cover	1	16	D39WR-2	Washer	1					

FOOTNOTES



10000 SE PINE
PORTLAND, OR 97216
503-254-6600
FAX 503-255-2615

When ordering spare parts, please specify tool type, part number, and description.