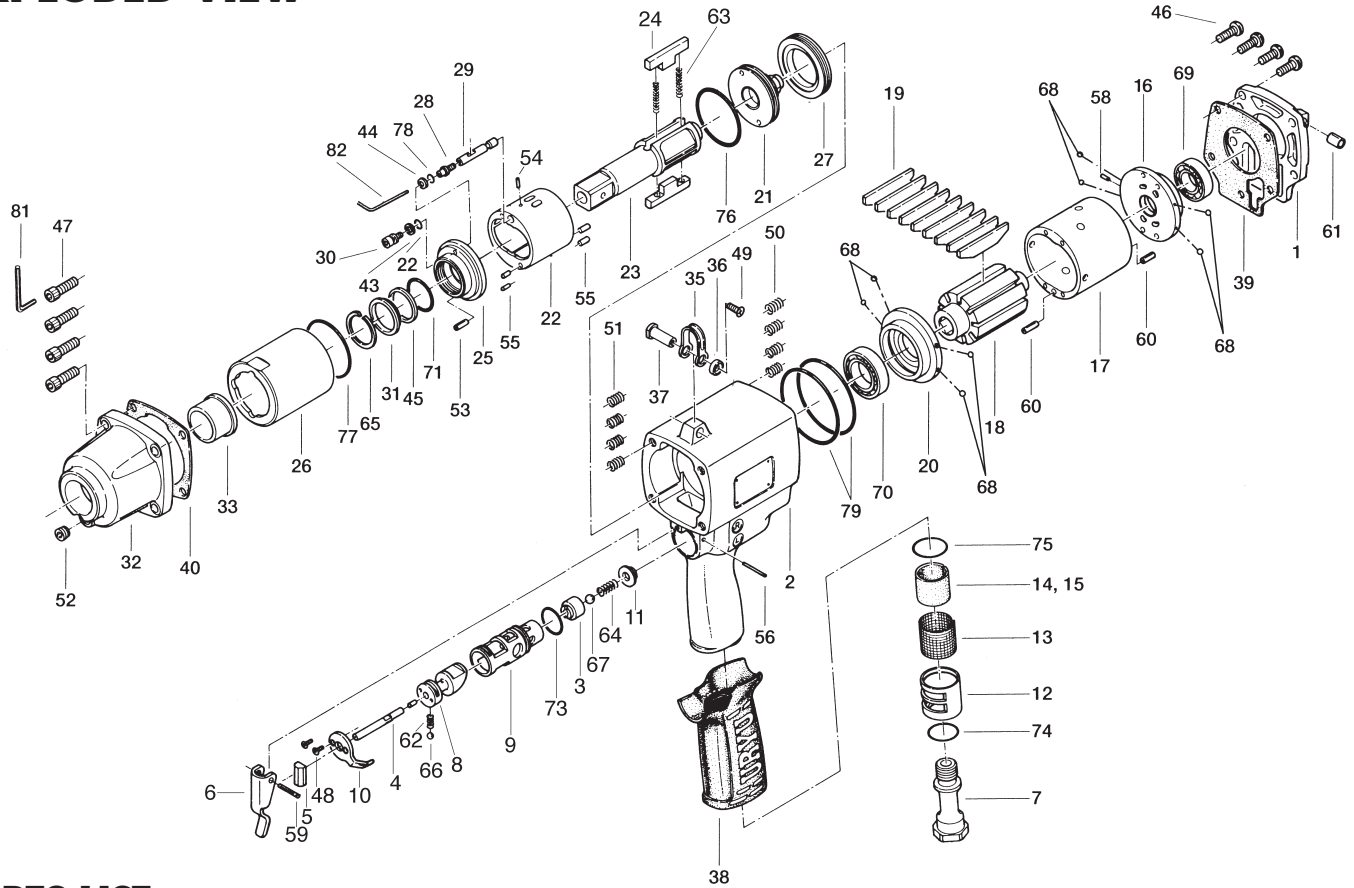


EXPLODED VIEW



PARTS LIST — FOR REFERENCE ONLY

Index Number	Part Number	Description	Qty.	Index Number	Part Number	Description	Qty.	Index Number	Part Number	Description	Qty.
1	195-012-3	Head Cover	1	29	163-970-5	Relief Valve	1	60	973-212-0	Roll Pin (4 x 12)	2
2	163-025-5	Handle	1	30	194-742-3	Oil Plug	1	61	973-360-0	Roll Pin (8 x 10)	1
3	163-100-6	Valve	1	31	163-807-5	Spacer	1	62	976-006-0	Spring (3 x 5 x 0.4)	1
4	163-104-6	Valve Rod	1	32	163-439-5	Front Casing	1	63	976-795-0	Spring (4.3 x 40.5 x 0.6) WPC	2 ●
5	163-106-6	Valve Rod Cap	1	33	195-328-7	Anvil Bushing	1	64	976-142-0	Spring (6 x 17.5 x 0.6)	1
6	163-107-6	Valve Lever	1	36	195-790-9	Suspension Ring	1	65	979-207-0	Inner Snap Ring (30)	1
7	163-091-6	Air Inlet Bushing	1	37	149-796-9	Suspension Ring Bushing	1	66	981-002-0	Ball (1/8)	1
8	163-210-6	Reverse Valve	1	38	163-842-6	Handle Cover	1	67	981-206-0	Ball (1/4) Black	1
9	163-211-6	Reverse Valve Bushing	1	39	195-853-3	Head Cover Packing	1	68	981-047-0	Ball (3/32)	8
10	163-212-3	Reverse Lever	1	40	195-867-3	Front Casing Packing	1	69	982-103-0	Ball Bearing (6003)	1
11	163-109-6	Valve Spring Setter	1	43	944-003-0	Supporting Ring (3 x 5 x 1)	1 ●	70	982-906-0	Ball Bearing (6905)	1
12	163-780-6	Exhaust Stack	1	44	944-205-0	Supporting Ring (5.1 x 7 x 1)	1 ●	71	990-170-0	O-Ring (ARP-568-120 NTN)	1 ●
13	163-042-3	Silencer	1	45	944-225-0	Supporting Ring (25.2 x 29.4 x 1.5)	1 ●	72	990-970-0	O-Ring (SNS-2 NOK)	1 ●
14	163-835-5	Filter (k100)	1	46	945-117-0	Allen Head Bolt (M5 x 16)	4	73	990-916-0	O-Ring (SNS-18)	1
15	163-835-6	Filter (K200)	1	47	945-220-0	Allen Head Bolt (M6 x 20)	4	74	990-919-0	O-Ring (SNS-22)	1
16	163-285-5	Rear Plate	1	48	948-423-0	Allen Flush Head Screw (M3 x 6)	2	75	990-923-0	O-Ring (SNS-26)	1
17	163-286-5	Cylinder	1	49	948-430-0	Allen Flush Head Screw (M4 x 8)	1	76	990-936-0	O-Ring (SNS-45)	1 ●
18	163-287-5	Rotor	1	50	965-011-0	Heli-Sert (M5 x 1.5)	4	77	990-937-0	O-Ring (SNS-46)	1 ●
19	163-288-5	Blade	9	51	965-021-0	Heli-Sert (M6 x 1.5D)	4	78	990-972-0	O-Ring (SNS-4 NOK)	1 ●
20	163-289-5	Front Plate	1	52	966-100-0	Allen Head Plug (GM-1/8)	1	79	990-990-0	O-Ring (SNS-65)	1
21	195-901-3	Rear Liner Plate	1	53	969-484-0	Pin (D) (3 x 8)	1	ACCESSORIES			
22	172-902-5	Liner	1	54	970-093-0	Pin (H) (2 x 6)	1	81	939-104-0	Allen Wrench 5	1
23	163-319-5	Anvil (3/4)	1	55	970-206-0	Pin (H) (3 x 8)	4	82	939-109-0	Allen Wrench 2	1
24	195-440-6	Driving Blade	2	56	971-126-0	Pin (2 x 26)	1				
25	163-904-5	Front Liner Plate	1	57	972-090-0	Roller Pin (3 x 10)	1				
26	195-905-6	Liner Casing	1	58	973-066-0	Roll Pin (2.5 x 6)	1				
27	195-906-3	Liner Casing Setter	1	59	973-120-0	Roll Pin (3 x 20)	1				
28	175-907-9	Relief Valve Spindle	1								



10000 SE PINE
PORTLAND, OR 97216
503-254-6600
FAX 503-255-2615

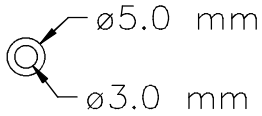
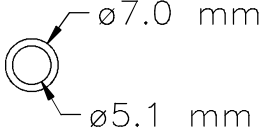
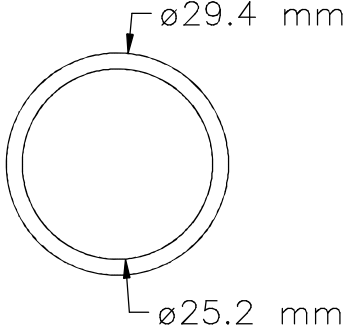
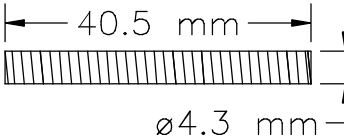
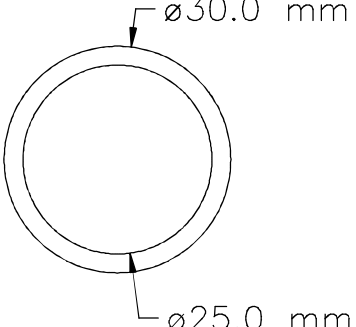
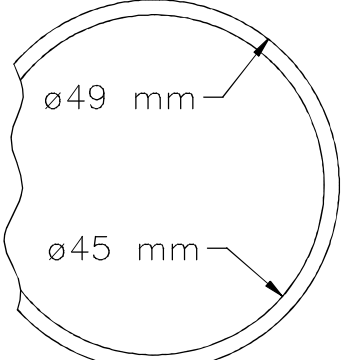
When ordering spare parts, please specify tool type, part number, and description.

FOOTNOTES

● = Items in Pulse Repair Kit Alpha-160-PRK

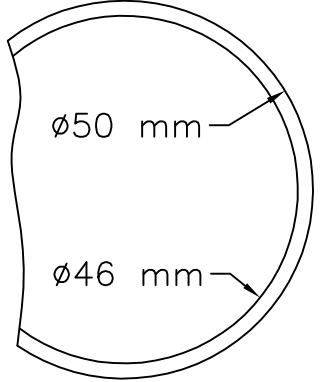
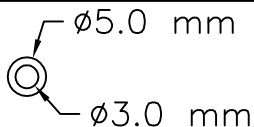
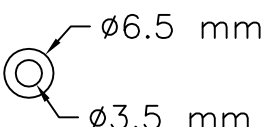
ALPHA-160-PRK

(Kit contains following parts)

#/#	Bin Location	Part Number	QTY	Description	Material	Drawing / Scketch
1	PA10	944-003-0	1	Support Ring 3.0x5.0x1	Teflon-White	
2	PA10	944-205-0	1	Back Up Ring 5.1x7.0x1	Teflon-White	
3	PA10	944-225-0	1	Supporting Ring 25.2x29.4x1.5	Teflon-White	
4	PA1J	976-795-0	2	Spring 4.3x40.5 (0.6) WPC	Spring wire ø.60 mm	
5	PA1A	990-170-0	1	O-Ring (ARP568-120)(NTN) 25x30x2.7	Buna-Black	
6	PA1B	990-936-0	1	O-Ring (SNS-45) 45x49x2	Buna-Black	

ALPHA-160-PRK

(Kit contains following parts)

#/#	Bin Location	Part Number	QTY	Description	Material	Drawing / Scketch
7	PA1B	990-937-0	1	O-Ring (SNS-46) 46x50x2	Buna-Black	 <p> $\phi 50$ mm $\phi 46$ mm </p>
8	PA1C	990-970-0	1	O-Ring (SNS-2)	Buna-Black	 <p> $\phi 5.0$ mm $\phi 3.0$ mm </p>
9	PA1C	990-972-0	1	O-Ring (SNS-4) (NOK)	Buna-Black	 <p> $\phi 6.5$ mm $\phi 3.5$ mm </p>