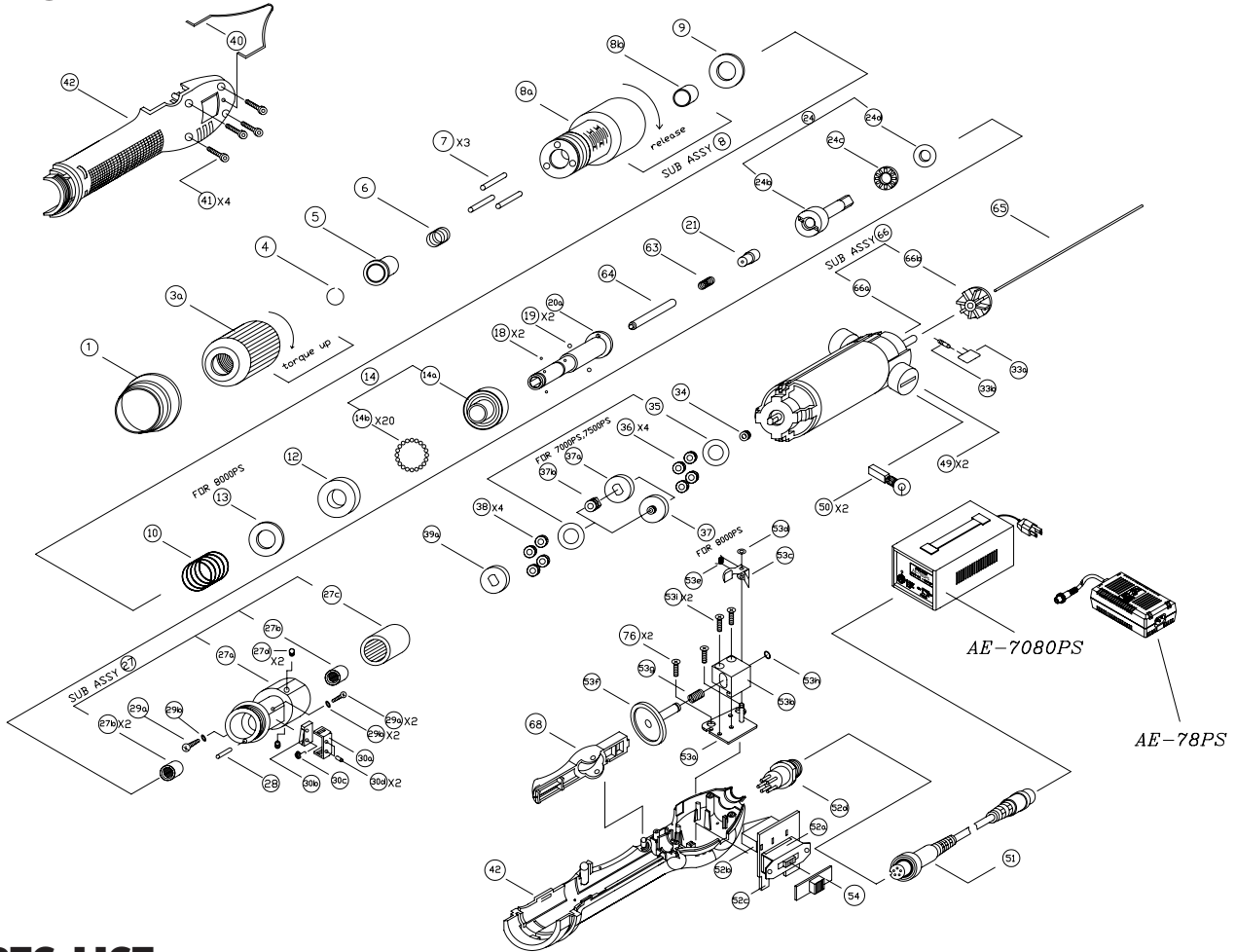


# AE-7010PS/AE-8010PS SCREWDRIVER

## EXPLODED VIEW



## PARTS LIST — FOR REFERENCE ONLY

Index Number	Part Number	Description	Qty.	Index Number	Part Number	Description	Qty.	Index Number	Part Number	Description	Qty.
1	6R5011	Retaining Ring (For #AE-7010PS)	1	27d	8K2014	Screw	2	41	8T2687	Screw	4
	4H1101	Retaining Ring (Aluminum For #AE-8010PS)	1	28	4N1120	Brake Pin	1	42	6Z3013	Plastic Housing Set	1
3a	4J1084	Regulating Handle	1	29	8T1064	Screw	2		6Z3010	Plastic Housing Set (For ESD)	1
4	4U1052	Snap Ring	1		4W1712	Washer	2	43	6P1021	Trigger	1
5	4H2082	Bit Slide Sleeve	1	30	2A7015	Micro Switch Sub Ass'y	1		6P1022	Trigger (For ESD)	1
6	4S3064	Sleeve Spring	1	30a	4V1032	Fixing Plate	1	44	4S3051	Trigger Spring	1
7	4N1025	Torque Adjustment Pin	3	30b	2S3011	Micro Switch Only	1	49	6V1021	Brush Cover	2
8	4A1016	Hammer Casing Sub Ass'y	1	30c	4S3043	Spring	1	50	2B1013	Brush	2
8a	4T1092	Hammer Casing	1	30d	4N4015	Pin	1	51	2W2123	SP-5P DC Connector Wire (AE-7080PS)	1
8b	4Q1045	Anvil Bushing	1	65	4N4023	Guide Pin (ø1.4x1=1.61.5)	1		2W2124	SP-5P DC Connector Wire (AE-7080PS)	1
9	4W4716	Push Washer	1	66	2A1026	Motor Sub Ass'y (For #AE-7010PS)	(1)	52	2A6025A	FWD/REV Ass'y (For PWB 5P Plug)	1
10	4S1033	Spring (For #AE-7010PS)	1	66a	2M1063	Motor (For #AE-7010PS)	1	52a	2S2019	FWD/REV Switch	1
	4S1034	Spring (For #AE-8010PS)	1	66b	6R2012	Fan (For #AE-7010PS)	1	52b	2S1021	Operation Switch	1
12	4E2027	Retainer	1	66	2A1027	Motor Sub Ass'y (For #AE-8010PS)	1	52c	2H1075	Circuit Board	1
13	4W3217	Washer	1	66a	2M1064	Motor (For #AE-8010PS)	1	52d	2G1022	SP Plug	1
14a	4K3044	Clutch Control Disc	1	66b	6R2012	Fan (For #AE-8010PS)	1	53	4A6011	Braking Disk Sub Ass'y inc.53a-53i	(1)
14b	4B1027	Ball	20	33a	2C6617	Capacitor	1	53a	4V1122	Fixing plate	1
18	4B2016	Ball	2	33b	2R2014	Resistance	1	53b	4V1026	Slide Base	1
19	4B2018	Ball	2	34	4G1045	Driving Gear	1	53c	4S5016	Spring Plate	1
20a	4C1074	Anvil	1	35	4W3012	Washer	1	53d	6W1012	Plastic Washer	1
21	4C2014	Anvil Rear Shaft	1	36	4G2687	First Pinion Gear	4	53e	4S3101	Support Spring	1
24	4A3117	Hammer Sub Ass'y	1	37	4L1883	First Gear Cage (For #AE-8010PS)	1	53f	4K4011	Braking Disk	1
24b	4K1054	Hammer	1	37a	4L2814	First Gear Cage (For #AE-7010PS)	1	53g	4S2027	Spring	1
24c	4E4021	Thrust Bearing	1	37b	4G1613	Second Driving Gear (For #AE-7010PS)	1	53h	4U1061	Snap Ring	1
24d	4W3213	Washer	1	38	4G2652	Second Pinion Gear (For #AE-7010PS)	4	53i	8T3326	Screw	1
27	4A7021	Gear Housing Sub Ass'y	1		4G2687	Second Pinion Gear (For #AE-8010PS)	4	54	6V1042	Push Button (Black)	1
27a	4R1041	Gear Housing or Gear Casing	1	39a	4L1813	Second Gear Cage (For #AE-7010PS)	1		6V1041	Push Button (ESD/Black)	1
27b	4E4032	Roller Bearing	2		4L2814	Second Gear Cage (For #AE-8010PS)	1	76	8T2690	Pan Head Tapping Screw (ø3.0 * 1)	1
27c	4X1057	Internal Gear	1	40	4F1041	Hanger Ring (Black 1/4" for Bit Holder)	1				



10000 SE PINE,  
PORTLAND, OR 97216  
503-254-6600  
FAX 503-255-2615

When ordering spare parts, please specify  
tool type, part number and description.

### FOOTNOTES