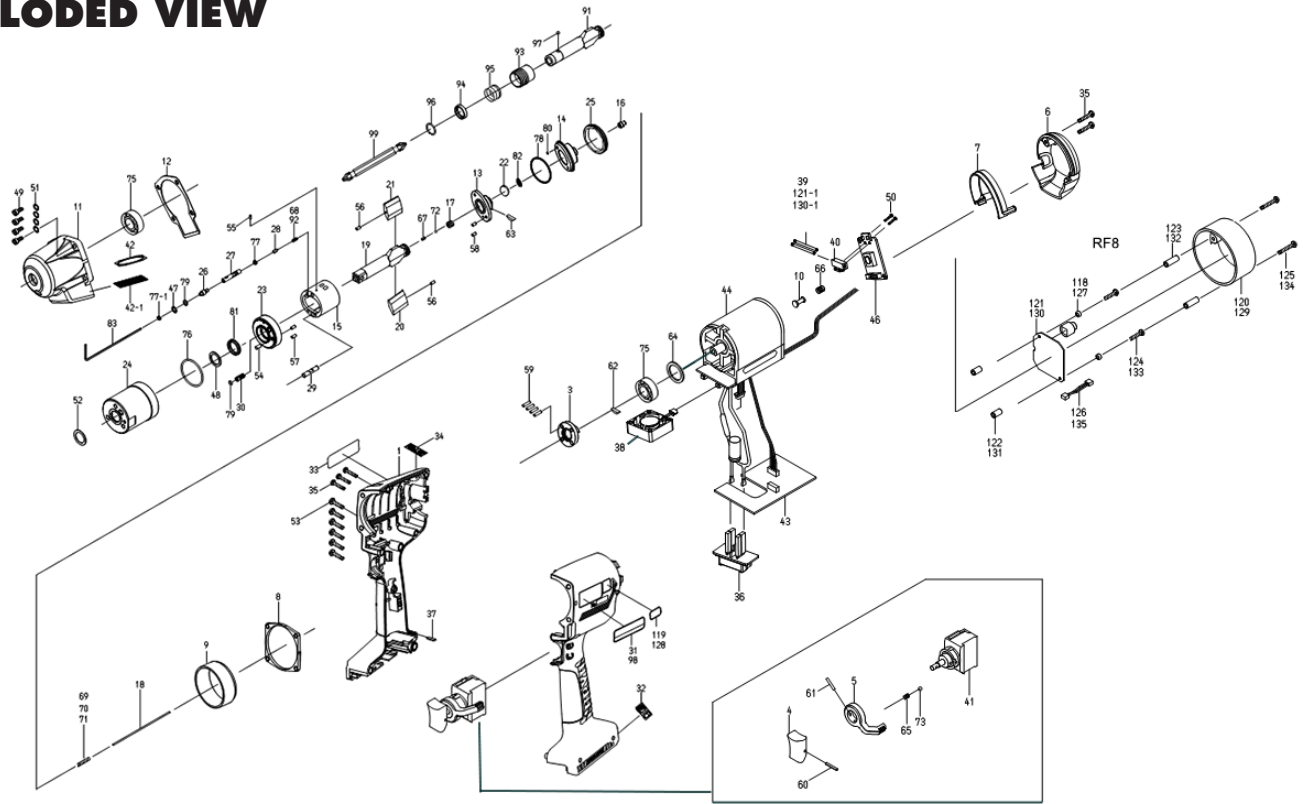


# UBX-T60 SHUT-OFF BATTERY PULSE TOOL

## EXPLODED VIEW



### PARTS LIST — FOR REFERENCE ONLY

Index Number	Part Number	Description	Qty.	Index Number	Part Number	Description	Qty.	Index Number	Part Number	Description	Qty.
<b>COMMON PARTS</b>				44	911-042-0	Motor Assembly L=35	1	94	011-352-1	Bit Spacer	1
1	10F-025-0	Handle	1	46	863-891-1	Control Board c/w LED and Buzzer	1	95	976-327-0	Spring 13.5 x 11 (0.9)	1
3	12F-079-0	Connector	1	47	944-203-0	Supporting Ring 3.1 x 5 x 1	1	96	978-117-0	Snap Ring 11.7 x 1	1
4	147-107-2	Trigger	1	48	944-212-0	Supporting Ring 1.2 x 1.6 x 1.5	1	97	981-002-0	Ball 1/8	1
5	09B-212-5	Reverse Lever	1	49	945-026-0	Allen Head Bolt M4 x 16	4	98	12E-924-0	Name Plate	1
6	12F-012-0	Head Cover	1	50	957-030-0	Allen Head Screw M2 x 4	2	<b>PARTS FOR UBX-T60-RF8</b>			
7	12F-013-0	Handle Upper Cover	1	51	961-009-0	Round Washer 4 (8 x 0.5)	4	118	863-980-1	Washer	2
8	12F-035-0	Connector	1	52	962-800-0	Wave Washer BWV-625	1	119	10E-924-7	Name Plate	1
9	12F-036-0	Hammer Case Connector	1	53	963-253-0	Tapping Screw 3 x 16	6	120	863-984-1	Body Cover	1
10	12F-038-0	Slide Base	1	54	969-449-0	Pin (G) 3 x 6	1	121	863-985-1	Wireless Board	1
11	12E-439-1	Front Case	1	55	970-013-0	Pin (H) 1.5 x 4	1	121-1	910-449-0	Elastomer Tube	1
12	12F-867-0	Front Case Packing	1	56	970-014-0	Pin (H) 1.5 x 6.8	2	122	911-043-0	Spacer C-2605.5	2
13	12F-901-0	Rear Liner Plate	1	57	970-147-0	Pin (H) 2.5 x 5	2	123	911-044-0	Spacer C-2611	2
14	12F-310-0	Anvil Front Spacer	1	58	972-033-0	Pin 2.5 x 8	2	124	861-436-1	Tapping Screw 2.6 x 16	2
15	12A-902-3	Liner	1	59	972-087-0	Pin 3 x 6	4	125	963-262-0	Tapping Screw A M2.6 x 25	2
16	12F-546-0	Piston	1	60	973-014-0	Roll Pin 2 x 14	1	126	863-952-1	Wireless Board Cable	1
17	145-929-6	Check Valve Cover	1	61	973-018-0	Roll Pin 2 x 18	1	<b>PARTS FOR UBX-T60D-RF8</b>			
18	12F-130-0	Operating Rod 1.8 x 65.5	1	62	974-952-0	Half-moon Key 3 x 12 (3)	1	127	863-980-1	Washer	2
19	12E-319-1	Anvil	1	63	974-961-0	Half-moon Key 1.5 x 15.8	1	128	10E-924-7	Name Plate	1
20	12A-440-3	Driving Blade (A)	1	64	975-798-0	Adjusting Spacer 24 x 18 x t(t=0.3)	1	129	863-984-1	Body Cover	1
21	12A-440-4	Driving Blade (B)	1	65	976-006-0	Spring 3 x 5 (0.4)	1	130	863-985-1	Wireless Board	1
22	12F-835-0	Filter (K200)	1	66	976-499-0	Spring 7.3 x 9.4 (0.4)	1	130-1	910-449-0	Elastomer Tube	1
23	12F-904-0	Front Liner Plate	1	67	976-847-0	Spring 2.4 x 5.3 (0.26) n=7.5	1	131	911-043-0	Spacer C-2605.5	2
24	12U-905-1	Liner Casing	1	68	976-957-0	Spring 2.9 x 5.9 (0.4) n=5.75	1	132	911-044-0	Spacer C-2611	2
25	12A-906-3	Liner Casing Cover	1	69	976-984-0	Spring 3.3 x 13.5 (0.35) (Standard)	1	133	861-436-1	Tapping Screw 2.6 x 16	2
26	174-907-2	Relief Valve Spindle	1	70	976-960-0	Spring 3.3 x 12 (0.4) (Strong-tension)	1	134	963-262-0	Tapping Screw A M2.6 x 25	2
27	12E-970-1	Relief Valve	1	71	976-994-0	Spring 3.3 x 13.2 (0.35) (Weak-tension)	1	135	863-952-1	Wireless Board Cable	1
28	144-270-0	Pressure Valve	1	72	981-001-0	Ball 3/32	1	<b>COMMON ACCESSORIES</b>			
29	12F-276-6	Pressure Valve Body	1	73	981-002-0	Ball 1/8	1	83	939-091-0	Allen Wrench (1.5 mm)	1
30	194-742-0	Oil Plug	1	75	982-922-0	Ball Bearing 6901ZZ	2	99	916-810-0	(+) Double Bit (NO.2 x 75)	1
31	12E-924-1	Name Plate	1	76	990-334-0	O-Ring JWFS30-24	1	<b>OPTIONAL ACCESSORIES</b>			
32	12F-993-0	Plate (Specifications)	1	77	990-621-0	O-Ring 3.8 x 1.8 x 1.0	1	12E-840-1	Handle Protector	1	
33	094-997-4	Plate (Others)	1	77-1	990-623-0	O-Ring 4.6 x 3.0 x 0.8	1	12E-840-3	Handle Protector (RF8)	1	
34	094-995-4	Plate (Caution)	1	78	990-985-0	O-Ring SNS-28 (NOK)	1	863-994-1	Battery Protector	1	
35	963-258-0	Tapping Screw B1 M2.6 x 16	5	79	990-970-0	O-Ring SNS-2 (NOK)	2				
36	910-383-0	Battery Terminal Block	1	80	990-620-0	O-Ring 3.8 x 2.2 x 0.8 (Ro10)	1				
37	910-404-0	Level Display Cover	1	81	990-020-0	SU-Ring Q12 (NTN)	1				
38	910-484-0	Fan Assembly	1	82	996-280-0	Diaphragm	1				
39	910-449-0	Elastomer Tube	2	<b>PARTS FOR UBX-T60D</b>							
40	910-468-0	LED Cover	1	91	12E-350-0	Driver Anvil	1				
41	910-475-0	Switch	1	92	976-988-0	Spring 2.75 x 5.9 (0.35) n=5.5	1				
42	910-477-0	Mesh Plate	1	93	011-351-1	Bit Sleeve (1/8)	1				
42-1	910-418-0	Mesh	1								
43	911-046-0	Battery Board Assembly	1								

### FOOTNOTES



10000 SE PINE  
PORTLAND, OR 97216  
503-254-6600  
FAX 503-255-2615

When ordering spare parts, please specify tool type, part number, and description.