



ACRA-FEED®

A-50 Screw Presenter
"Standard"

Disassembling & Reassembling
Parts Manual

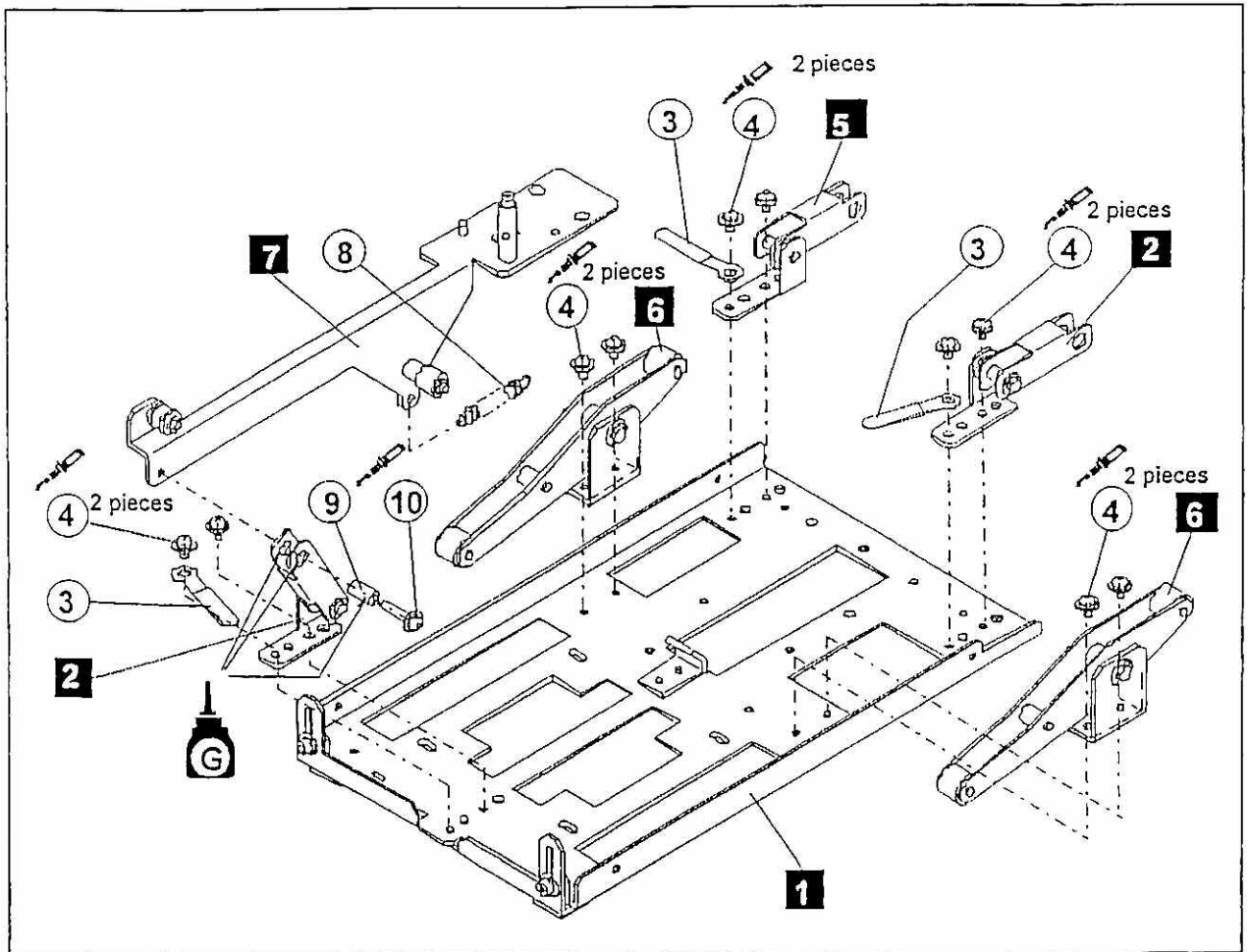


PO Box 16460, Portland OR 97292-0460 • 800-852-1368 • Fax 800-582-9015

www.aimco-global.com

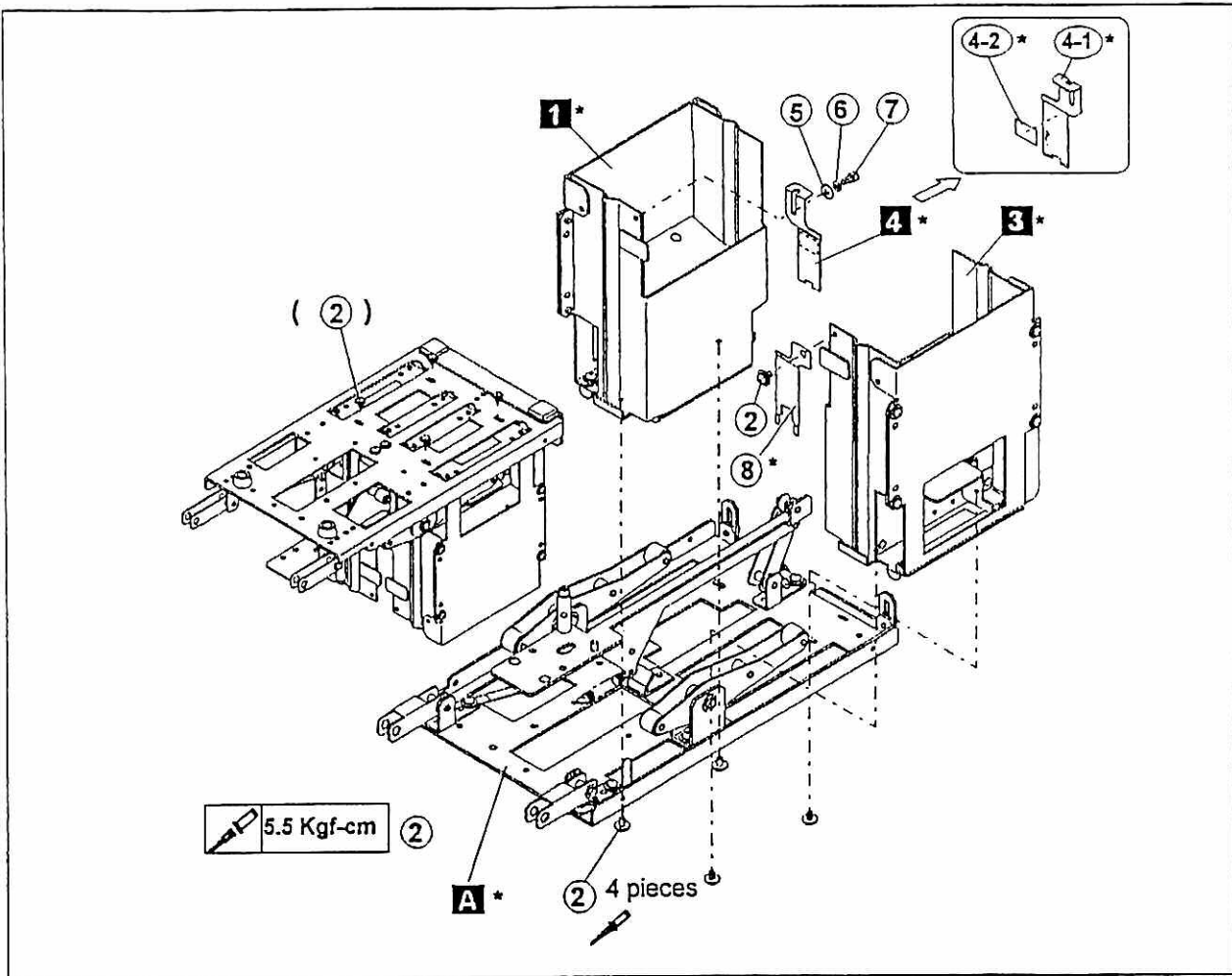
8. DISASSEMBLING AND REASSEMBLING

8.1 DISASSEMBLING AND REASSEMBLING (STEP - A)



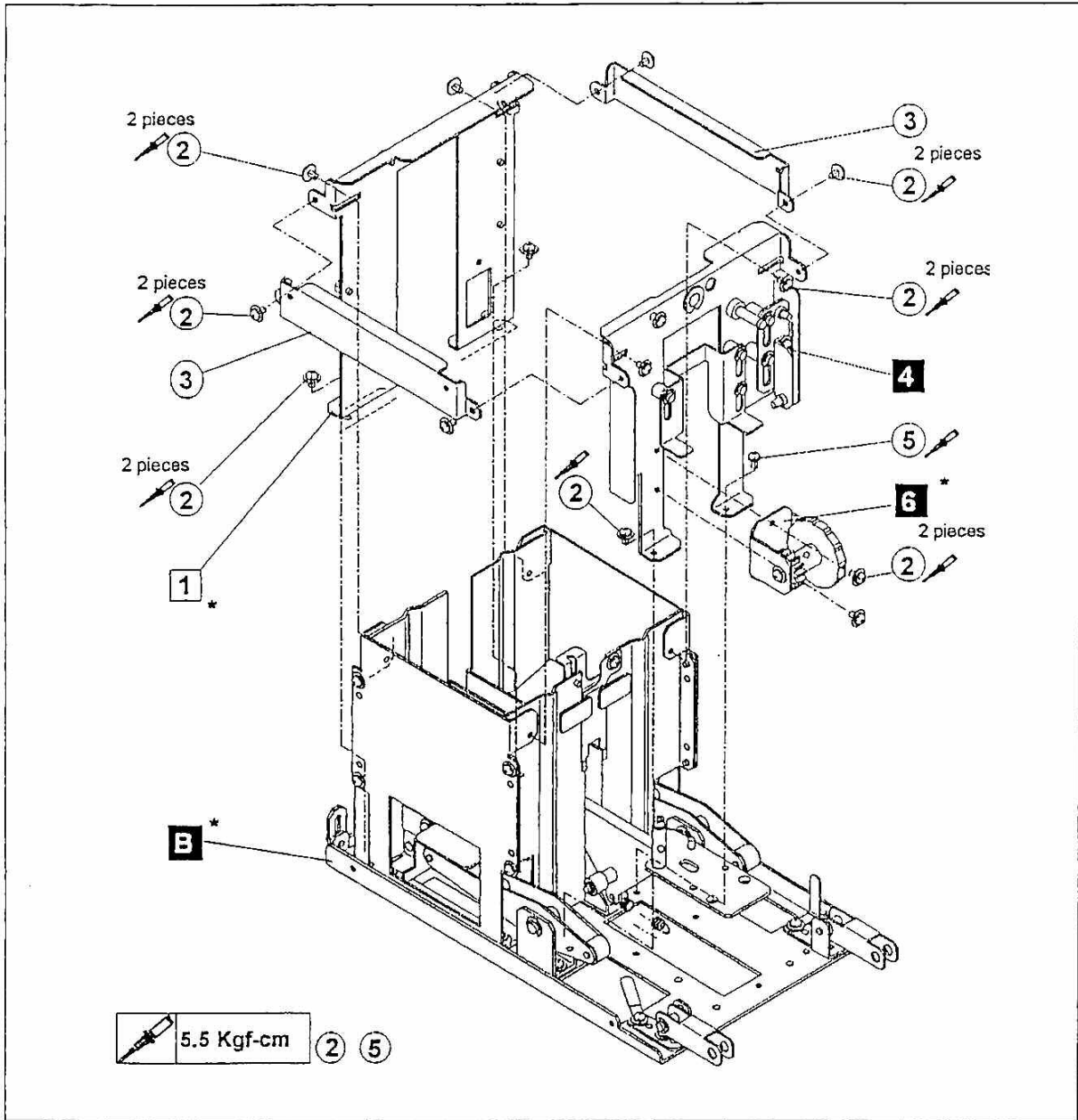
No.	Part name & Work name	Part number	Q'ty
1	Base unit	NJ07001T1N5 a	1
*2	Rail link L unit	NJ03005T1N5 a #2	2
3	Coaching clip	CS-9	3
4	+ Pan head screw with washer & spring, chromate	M2.6 x 5	10
*5	Rail link R unit	NJ03006T1N5 a #2	1
6	Drive link plate unit	NJ03001T1N5 a	2
7	Rail supporter unit	NJ03007T1N5 a	1
8	Vibration spring	SH05-15	1
9	Brass spacer	CB-2609	1
10	+ Pan head screw with washer & spring, chromate	M2.6 x 14	1

8.2 DISASSEMBLING AND REASSEMBLING (STEP - B)



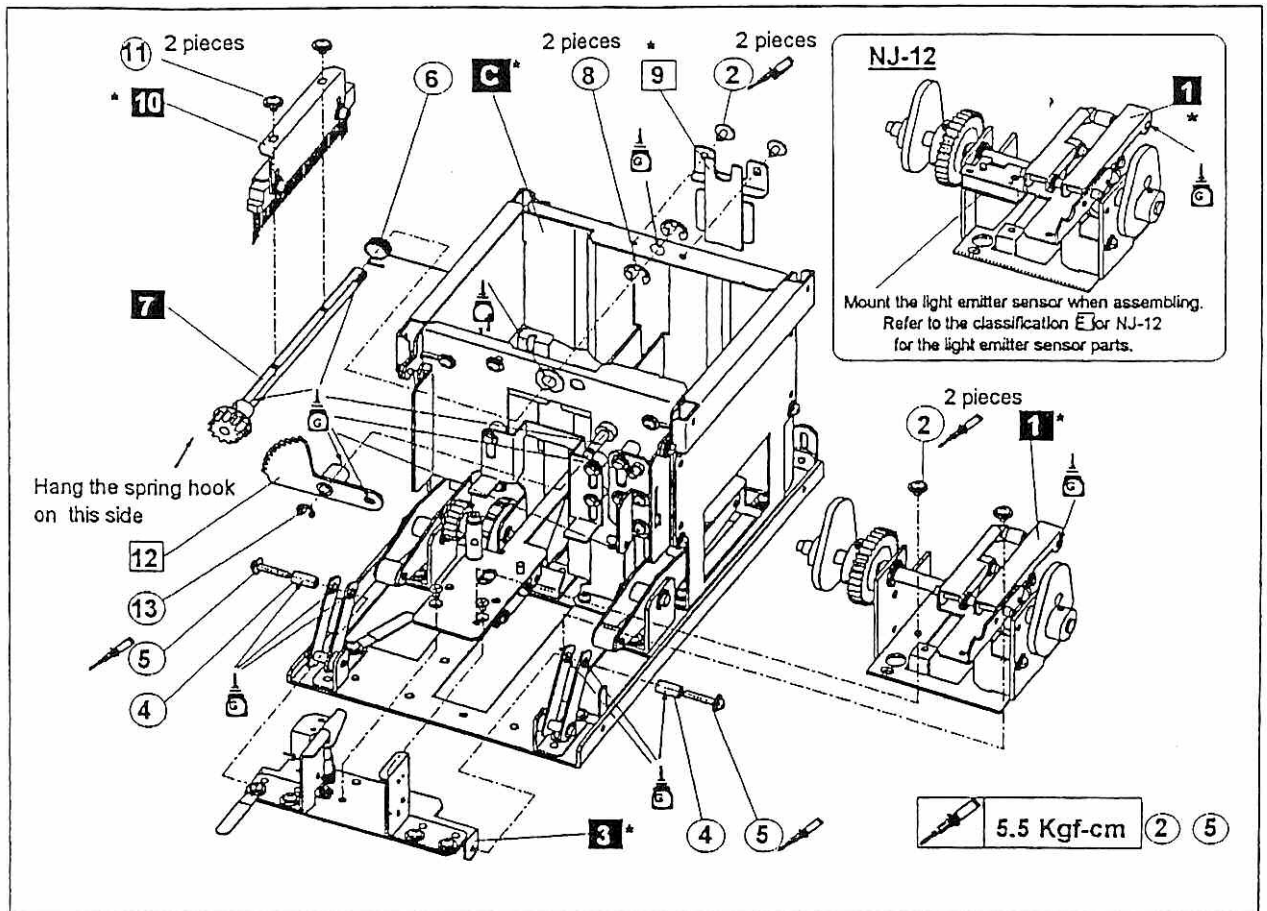
	Part name & Work name	Part number	Q'ty
	* Assembling A		1
*1	Scooping chamber L unit	NJ01000T1N5 b #2	1
2	+ Pan head screw with washer & spring, chromate	M2.6 × 5	5
*3	Scooping chamber R unit	NJ01001T1N5 b #2	1
4	Passing plate 1 : Scooping chamber		1
5	Washer	M2.6	1
6	Spring washer	M2.6	1
7	Hexagon socket head cap screw	M2.6	1
*8	Passing plate 2: Scooping chamber : M3	NJ01029T1N5 b	1
*4-1	Passing plate 1	NJ01028T1N5 f #5	1
*4-2	Label	t0.1x12x8	1

8.3 DISASSEMBLING AND REASSEMBLING (STEP - C)

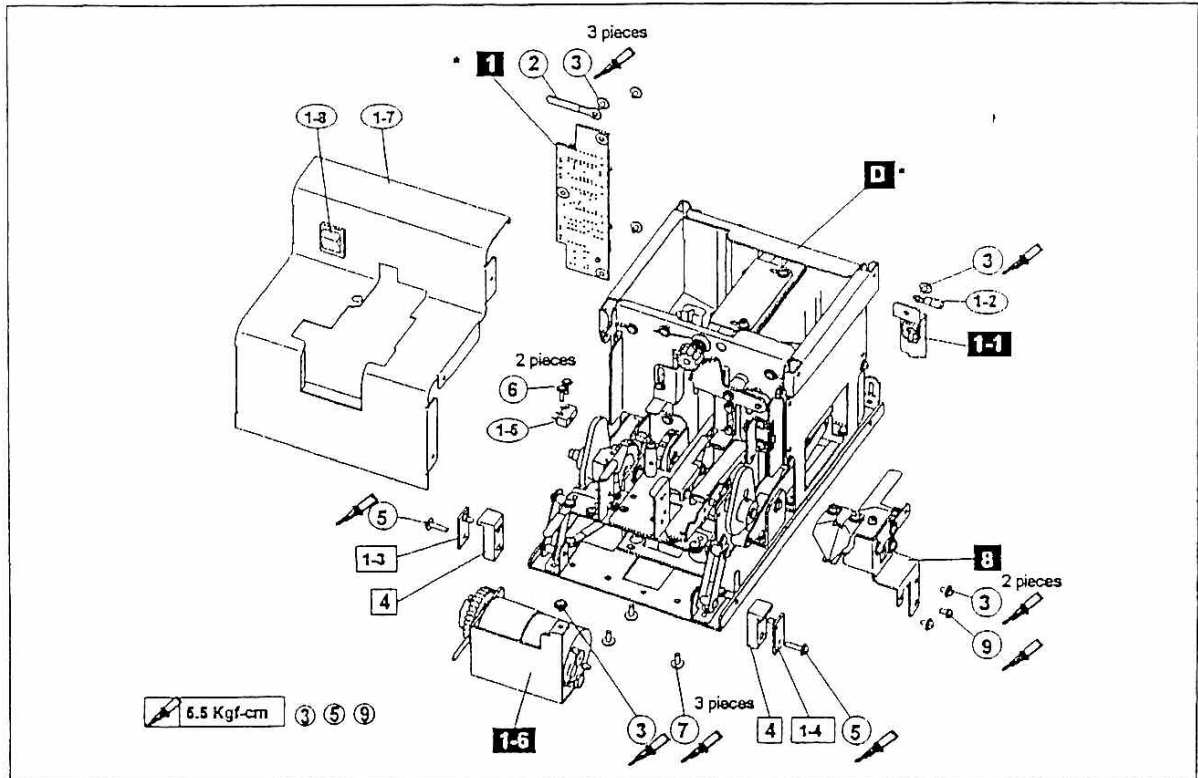


No.	Part name & Work name	Part number	Q'ty
	*Assembling B		1
*1	Rear brush holder plate unit	NJ02002T1N5 a #2	1
2	+ Pan head screw with washer & spring, chromate	M2.6 x 5	13
3	Cover bracket	NJ02042T1N5 b	2
4	Front brush holder plate	NJ02006T1N5	1
5	+ Pan head screw with washer & spring, chromate	M2.6 x 5	1
*6	Vibration cam Unit	NJ02001T1N5 a #2	1

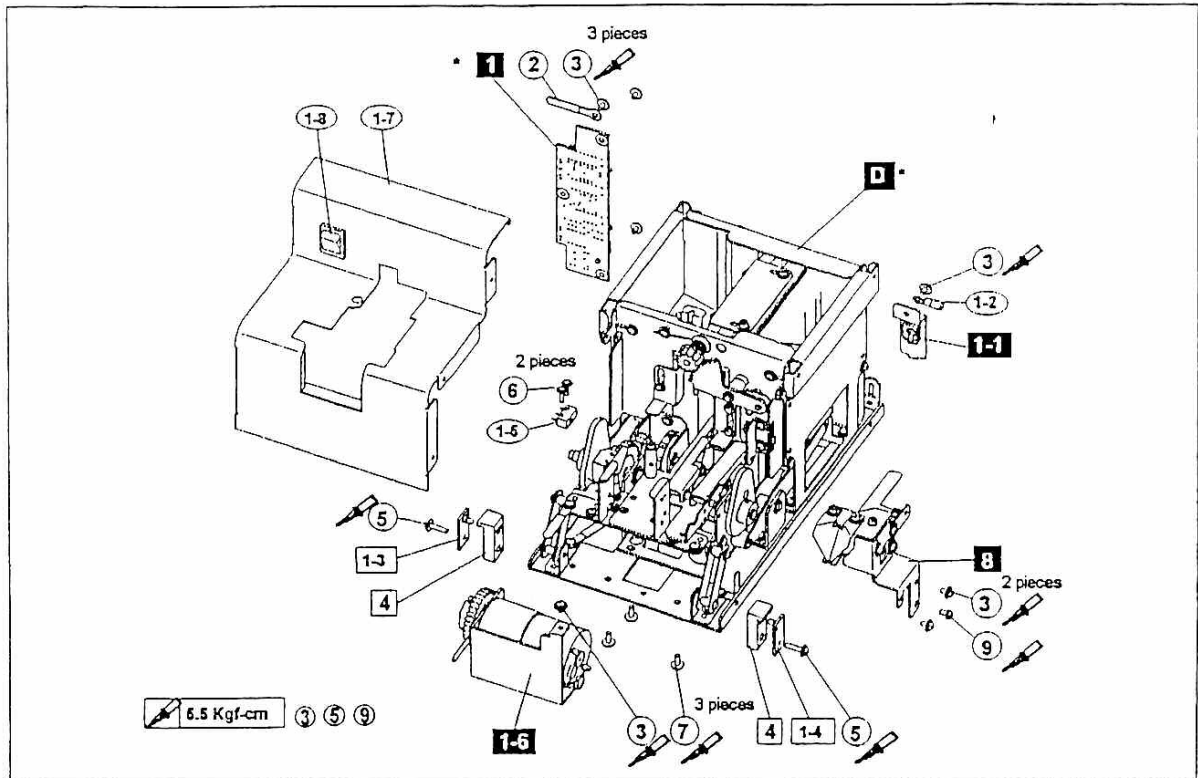
8.4 DISASSEMBLING AND REASSEMBLING (STEP - D)



No.	Part name & Work name	Part number	Q'ty
	*Assembling C		1
*1	Driver unit	NJ04000T1N5 a #2	1
2	+ Pan head screw with washer & spring, chromate	M2.6 x 5	4
*3	Rail supporter unit	NJ03008T1N5 b #2	1
4	Brass spacer	CB-2609	2
5	+ Pan head screw with washer & spring, chromate	M2.6 x 14	2
6	Brush spring	NJ02041T1N5 a	1
7	Brush driver shaft unit	NJ02004T1N5 a	1
8	Snap ring (E)	E-5	2
*9	Rear cover plate	NJ02013T1N5 a	1
*10	Brush unit: M3	NJ02005T1N5 a #2	1
11	+ Pan head screw with washer & spring, Ni plated	M2.6 x 5	2
12	Brush gear 1, caulking	NJ02023T1N5 a	1
13	Snap ring (E)	E-3	1

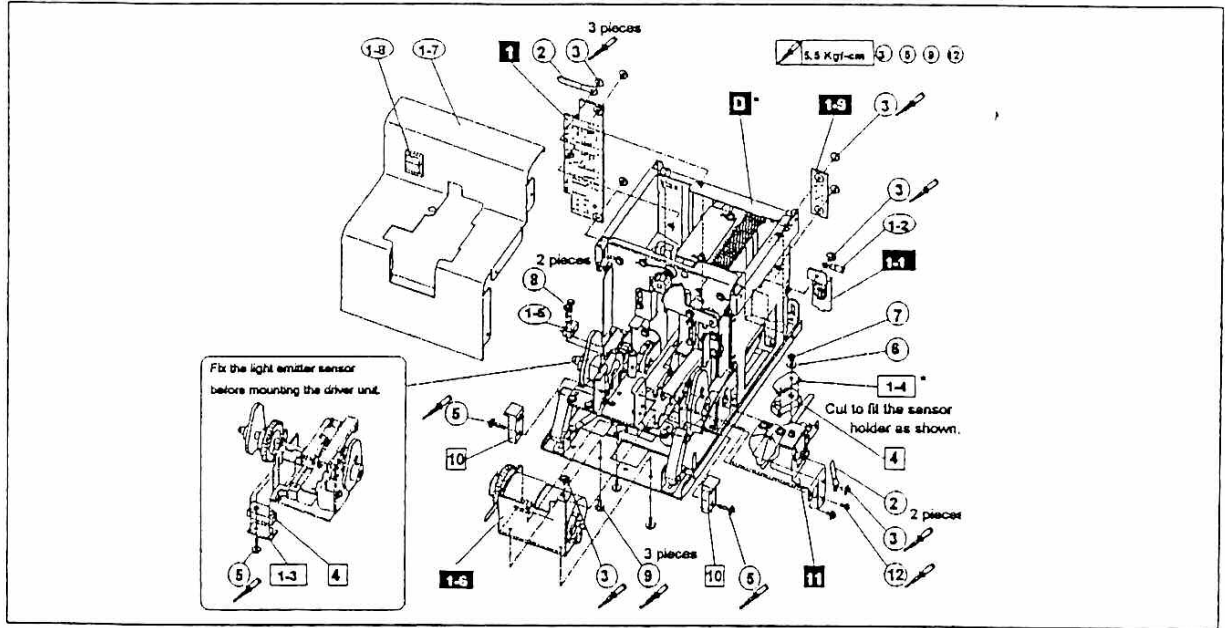


No.	Part name & Work name	Part number	Q'ty
	*Assembling D		1
*1	Wiring diagram of Main PCB		1
2	Coaching clip	CS-9	1
3	+ Pan head screw with washer & spring, chromate	M2.6 × 5	7
1-1	DC jack unit	NJ02003T1N5 a	1
1-2	Pressure connection terminal with insulating cover	TMEV 0.3-3	1
1-3	Light emitter sensor unit	NJ09012T1N5	1
4	Sensor holder unit	NJ03037T1N5 a	2
5	+ Pan head screw with washer & spring, chromate	M2.6 × 12	2
1-4	Light receiver sensor unit	NJ09014T1N5	1
1-5	Microswitch	D2F-01F	1
6	+ Pan head screw with washer & spring, chromate	M2 × 10	2
1-6	Motor unit	NJ04007T1N5	1
7	+ Pan head screw with washer & spring, chromate	M2.6 × 8	3
1-7	Front cover	NJ08011T1N5 b	1
1-8	Power switch	JW-S11RKKR	1
8	Bit guide unit	NJ05001T1N5 a #2	1
9	+ Pan head screw with washer & spring, chromate	M2.6 × 5	1



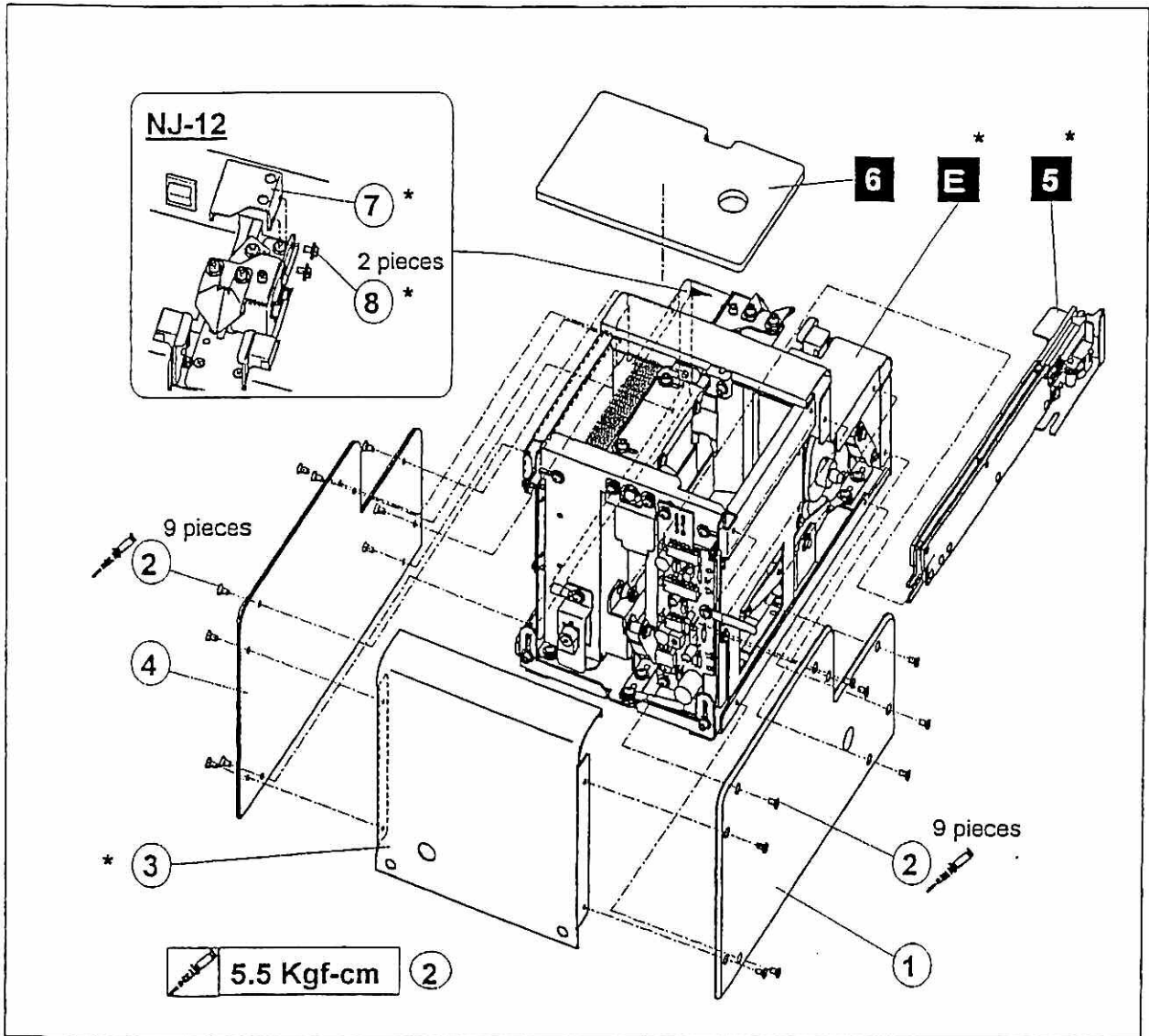
No.	Part name & Work name	Part number	Q'ty
	*Assembling D		1
*1	Wiring diagram of Main PCB		1
2	Coaching clip	CS-9	1
3	+ Pan head screw with washer & spring, chromate	M2.6 × 5	7
1-1	DC jack unit	NJ02003T1N5 a	1
1-2	Pressure connection terminal with insulating cover	TMEV 0.3-3	1
1-3	Light emitter sensor unit	NJ09012T1N5	1
4	Sensor holder unit	NJ03037T1N5 a	2
5	+ Pan head screw with washer & spring, chromate	M2.6 × 12	2
1-4	Light receiver sensor unit	NJ09014T1N5	1
1-5	Microswitch	D2F-01F	1
6	+ Pan head screw with washer & spring, chromate	M2 × 10	2
1-6	Motor unit	NJ04007T1N5	1
7	+ Pan head screw with washer & spring, chromate	M2.6 × 8	3
1-7	Front cover	NJ08011T1N5 b	1
1-8	Power switch	JW-S11RKKR	1
8	Bit guide unit	NJ05001T1N5 a #2	1
9	+ Pan head screw with washer & spring, chromate	M2.6 × 5	1

8.6 DISASSEMBLING AND REASSEMBLING (STEP - E) [NJ-12]



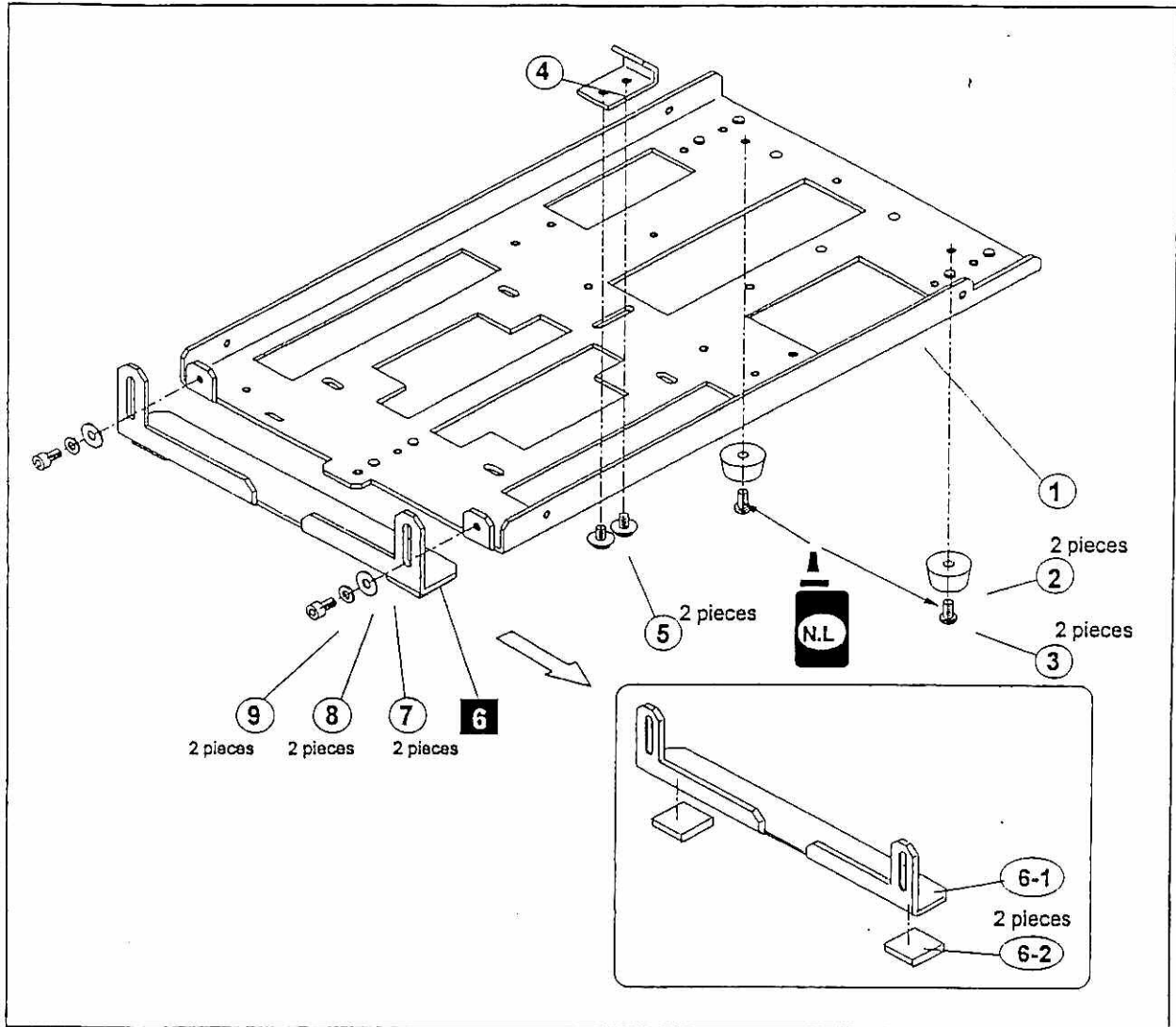
No.	Part name & Work name	Part number	Q'ty
	*Assembling D		1
1	Wiring diagram of main PCB		1
2	Coaching clip	CS-9	2
3	+ Pan head screw with washer & spring, chromate	M2.6 × 5	9
1-1	DC jack unit	NJ02003TIN5 a	1
1-2	Pressure connection terminal with insulating cover	TMEV 0.3-3	1
1-3	Light emitter sensor unit	NJ090125	1
4	Sensor holder unit	NJ03037T1N5a	2
5	+ Pan head screw with washer & spring, chromate	M2.6 × 12	2
*1-4	Light receiver sensor unit	NJ09014T1N5	1
6	Washer	M2.6	1
7	Hexagon nut	M2.6, 1 kind	1
1-5	Microswitch	D2F-01F	1
8	+ Pan head screw with washer & spring, chromate	M2 × 10	2
1-6	Motor unit	NJ04007T1N5	1
9	+ Pan head screw with washer & spring, chromate	M2.6 × 8	3
1-7	Front cover	NJ08011T1N5 b	1
1-8	Power switch	JW-S11RKKR	1
1-9	Diagram of VR board	NJ09016T1N5	1
10	Sensor holder unit	NJ03037T1N5a	2
11	Bit guide unit	NJ05001T1N5 a #1	1
12	+ Pan head screw with washer & spring, chromate	M2.6 × 5	1

8.7 DISASSEMBLING AND REASSEMBLING (STEP - F)



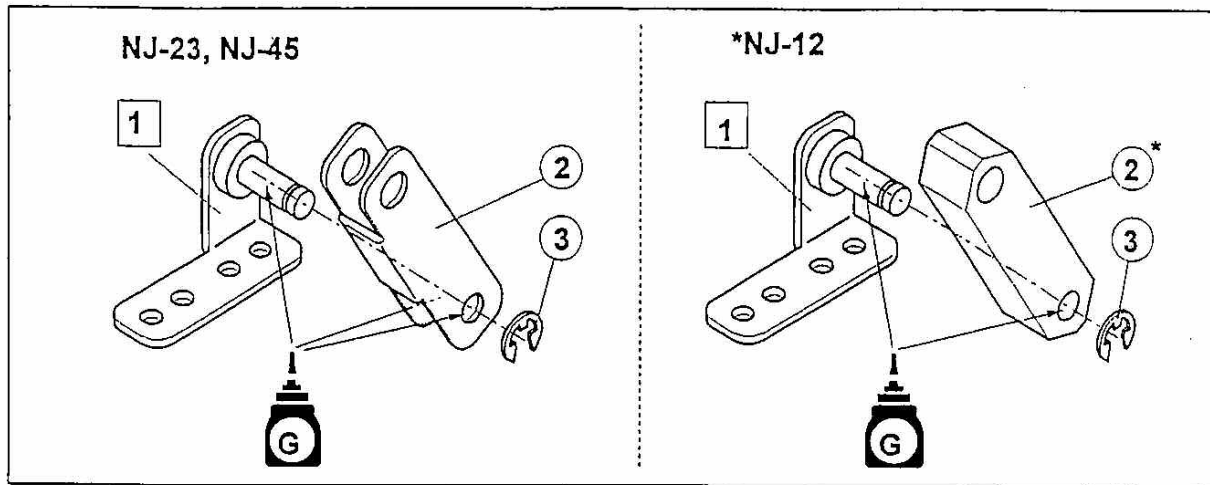
No.	Part name & Work name	Part number	Q'ty
	*Assembling E		
1	Side cover L	NJ08013T1N5 a	1
2	+ Countersunk head screw, Ni plated	M2.6 × 5	18
*3	Rear cover	NJ08012T1N5a #1	1
4	Side cover R	NJ08014T1N5	1
*5	Rail assembly	NJ06001T1N5c #4	1
6	Top cover	NJ08001T1N5 a	1
*7	Sensor cover : M17	NJ05017T1N5	1
*8	+ Pan head screw with washer & spring, Ni plated	M2.6 × 5	2

9. DISASSEMBLING AND REASSEMBLING PARTS
 9.1 DISASSEMBLING AND REASSEMBLING (STEP – A-1)



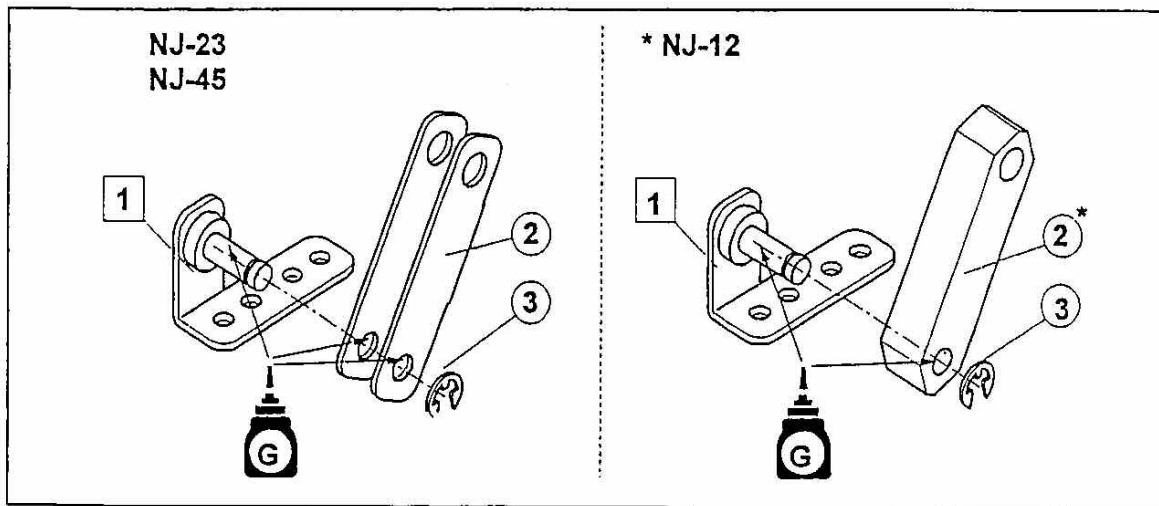
No.	Part name & Work name	Part number	Q'ty
1	Base	NJ07012T1N5 d	1
2	Front feet	K-11W	2
3	+ Pan head screw, chromate	M2.6 × 5	2
4	Rail stopper	NJ07015T1N5 a	1
5	+ Pan head screw with washer & spring, chromate	M2.6 × 5	2
6	Base bracket unit	NJ07013T1N5 #1	1
7	Washer	M2.6	2
8	Spring washer	M2.6	2
9	Hexagon socket head cap screw	M2.6 × 5	2
6-1	Base bracket	NJ07014T1N5 a	1
6-2	Rear feet	TM-166, No. 8	2

9.2 DISASSEMBLING AND REASSEMBLING (STEP - A - 2)



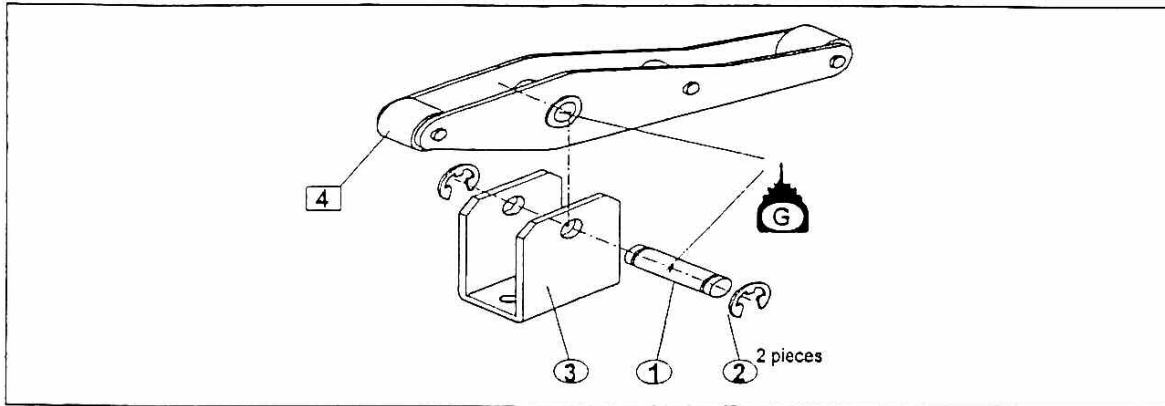
No.	Part name & Work name	Part number	Q'ty
1	Rail link bracket L	NJ03020T1N5 a	1
*2	Rail link	NJ03023T1N5 a	1
3	Snap ring (E)	E-3	1

9.3 DISASSEMBLING AND REASSEMBLING (STEP - A - 5)



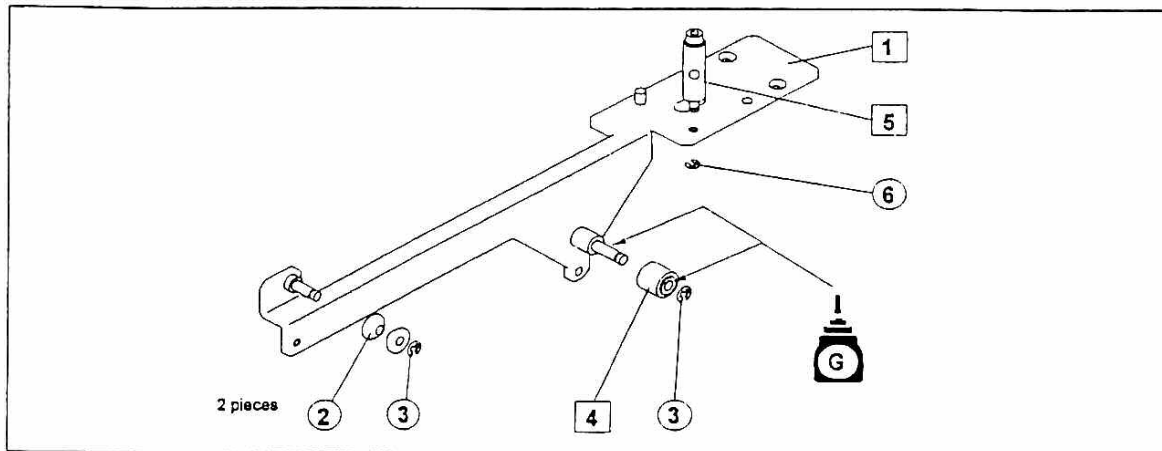
No.	Part name & Work name	Part number	Q'ty
1	Rail link bracket R, caulking	NJ03024T1N5 a	1
*2	Rail link	NJ03023T1N5 a	1
3	Snap ring (E)	E-3	1

9.4 DISASSEMBLING AND REASSEMBLING (STEP - A - 6)



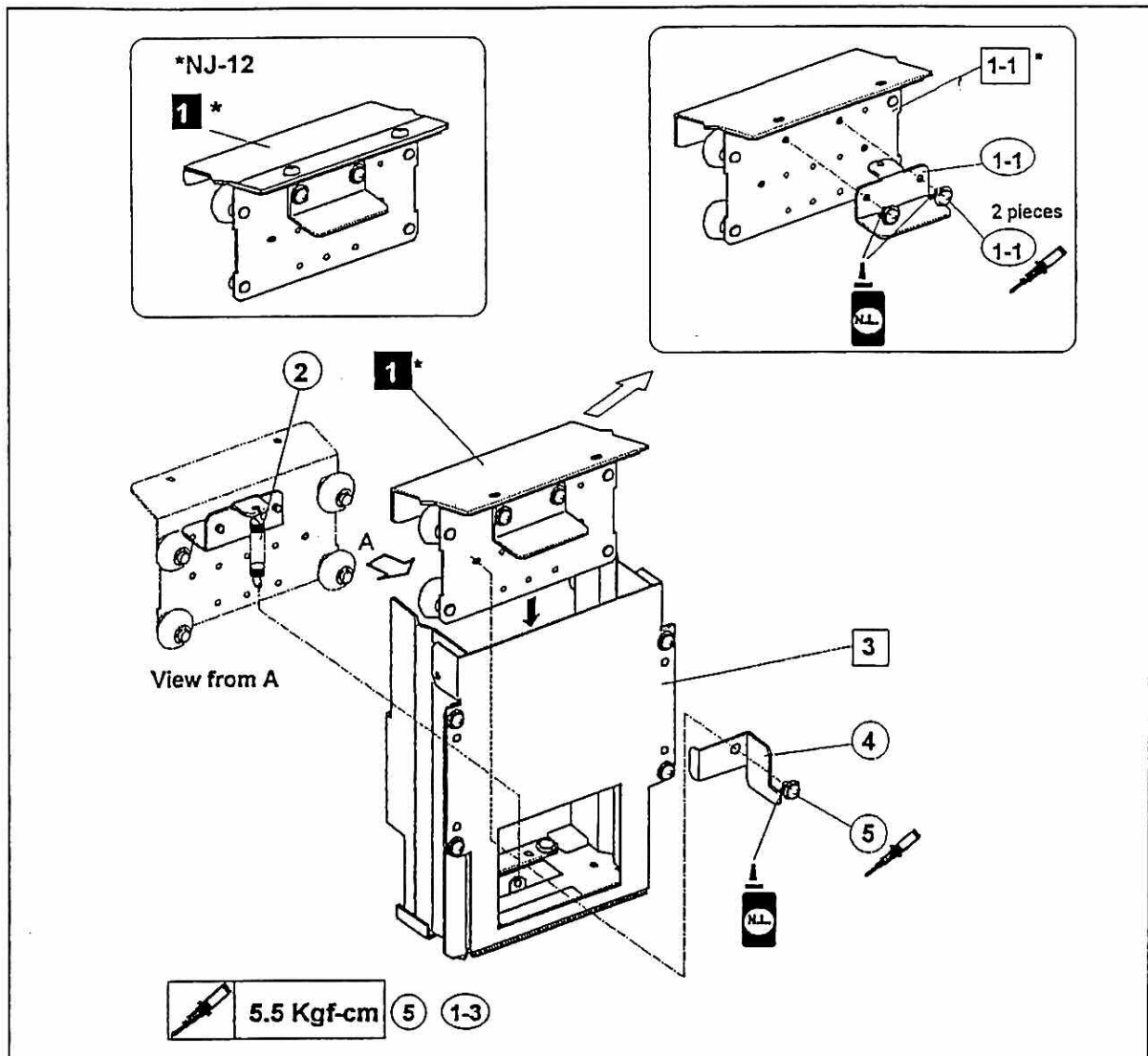
No.	Part name & Work name	Part number	Q'ty
1	Shaft : Drive link	NJ03018T1N5	1
2	Snap ring (E)	E-4	2
3	Drive link bracket	J03011T1N5 a	1
4	Drive link plate unit	NJ03002T1N5 a	1

9.5 DISASSEMBLING AND REASSEMBLING (STEP - A - 7)



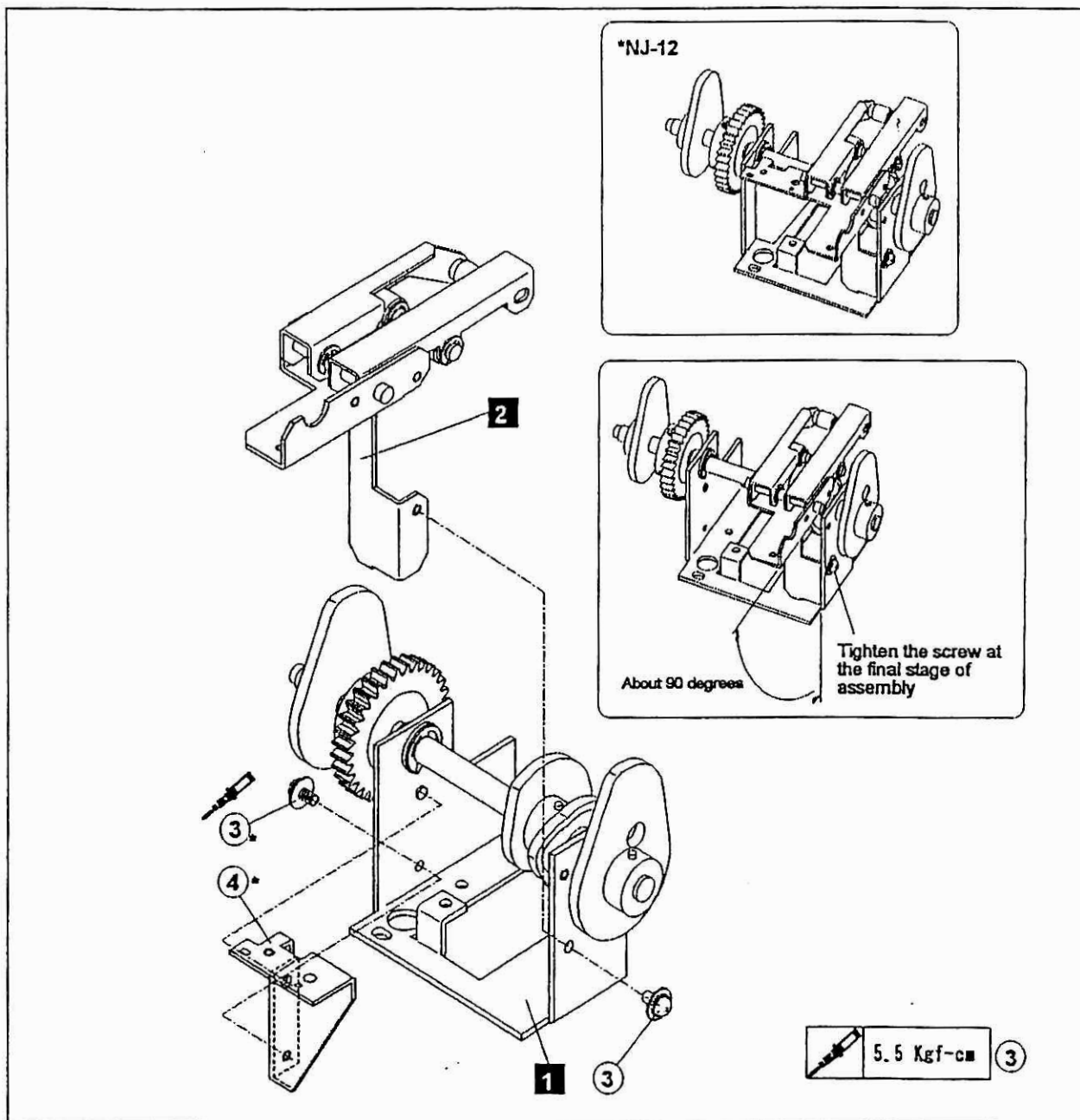
No.	Part name & Work name	Part number	Q'ty
1	Rail supporter 1, caulking	NJ03026T1N5 a	1
2	Roller : Rail supporter 1	NJ03031T1N5	2
3	Snap ring (E)	E-2	2
4	Vibration roller : Rail supporter	NJ03032T1N5	1
5	Fixing screws : Rail supporter 1 : unit	NJ03033T1N5 a	1
6	Snap ring (E)	E-1.5	1

9. DISASSEMBLING AND REASSEMBLING PARTS 9.6 DISASSEMBLING AND REASSEMBLING (STEP - B - 1)



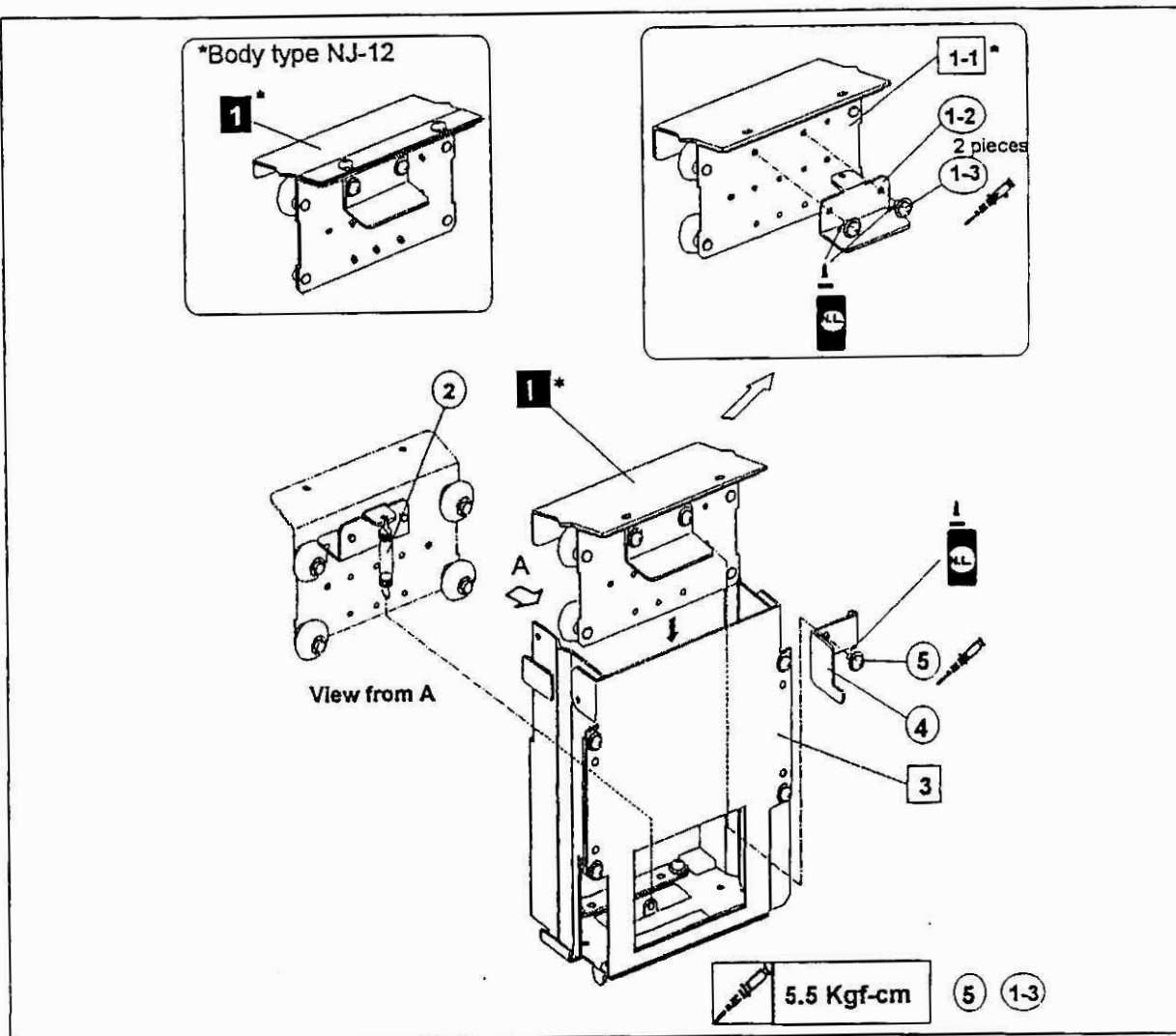
No.	Part name & Work name	Part number	Q'ty
*1	Welding : Scooping plate unit	NJ01003T1N5 c	1
2	Tension spring	NJ01042T1N5 #2	1
3	Scooping chamber L unit	NJ01004T1N5 a	1
4	Stopper plate L : Scooping plate	NJ01018T1N5 b	1
5	+ Pan head screw with washer & spring, chromate	M2.6 × 5	1
*1-1	Welding : Scooping plate		1
1-2	Drive holder plate : Scooping plate	NJ01017T1N5 g	1
1-3	+ Pan head screw with washer & spring, chromate	M2.6 × 5	2

9.10 DISASSEMBLING AND REASSEMBLING (STEP - D - 1)



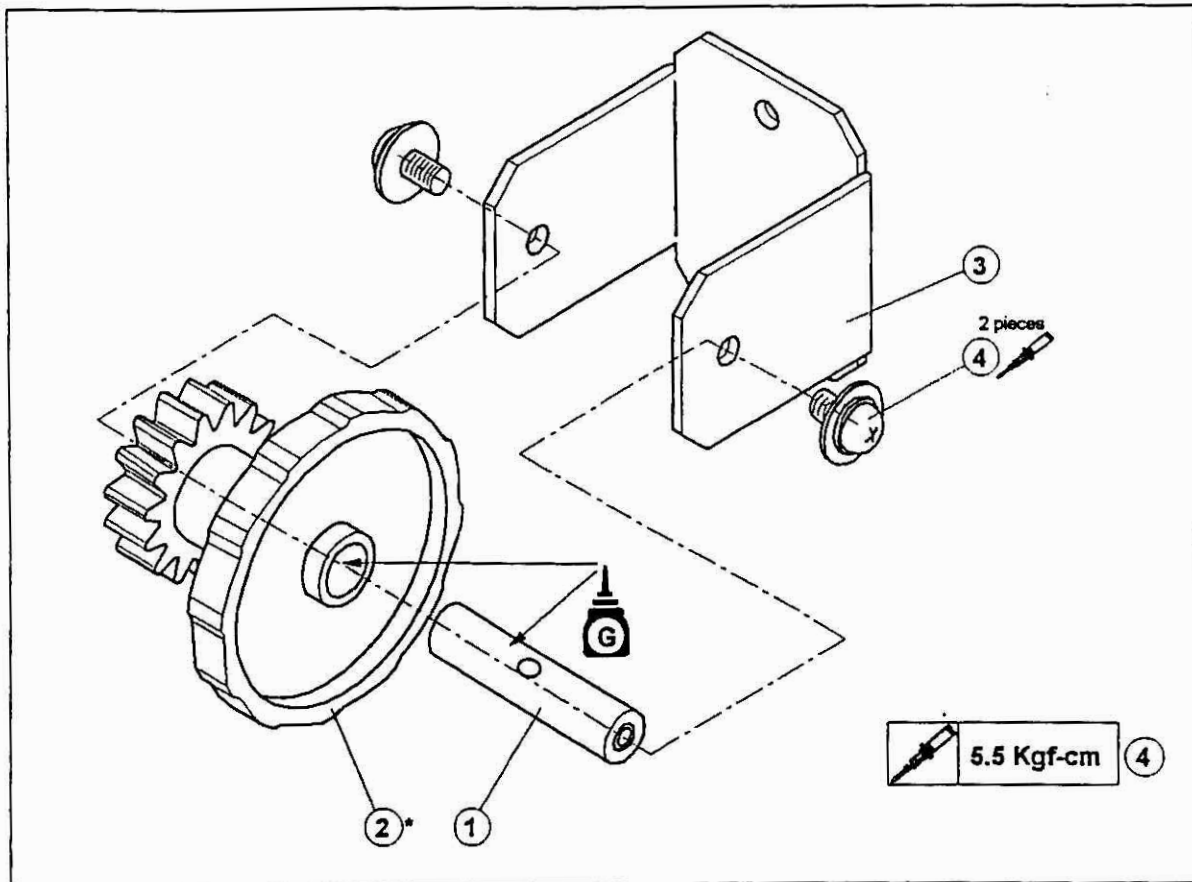
No.	Part name & Work name	Part number	Q'ty
1	Drive shaft bracket unit	NJ04001T1N5 b	1
2	Cam link holder unit	NJ04002T1N5 b	1
*3	+ Pan head screw with washer & spring, chromate	M2.6 × 5	1
*4	Light emitter sensor bracket : M17	NJ04027T1N5	1

9.7 DISASSEMBLING AND REASSEMBLING (STEP - B - 3)



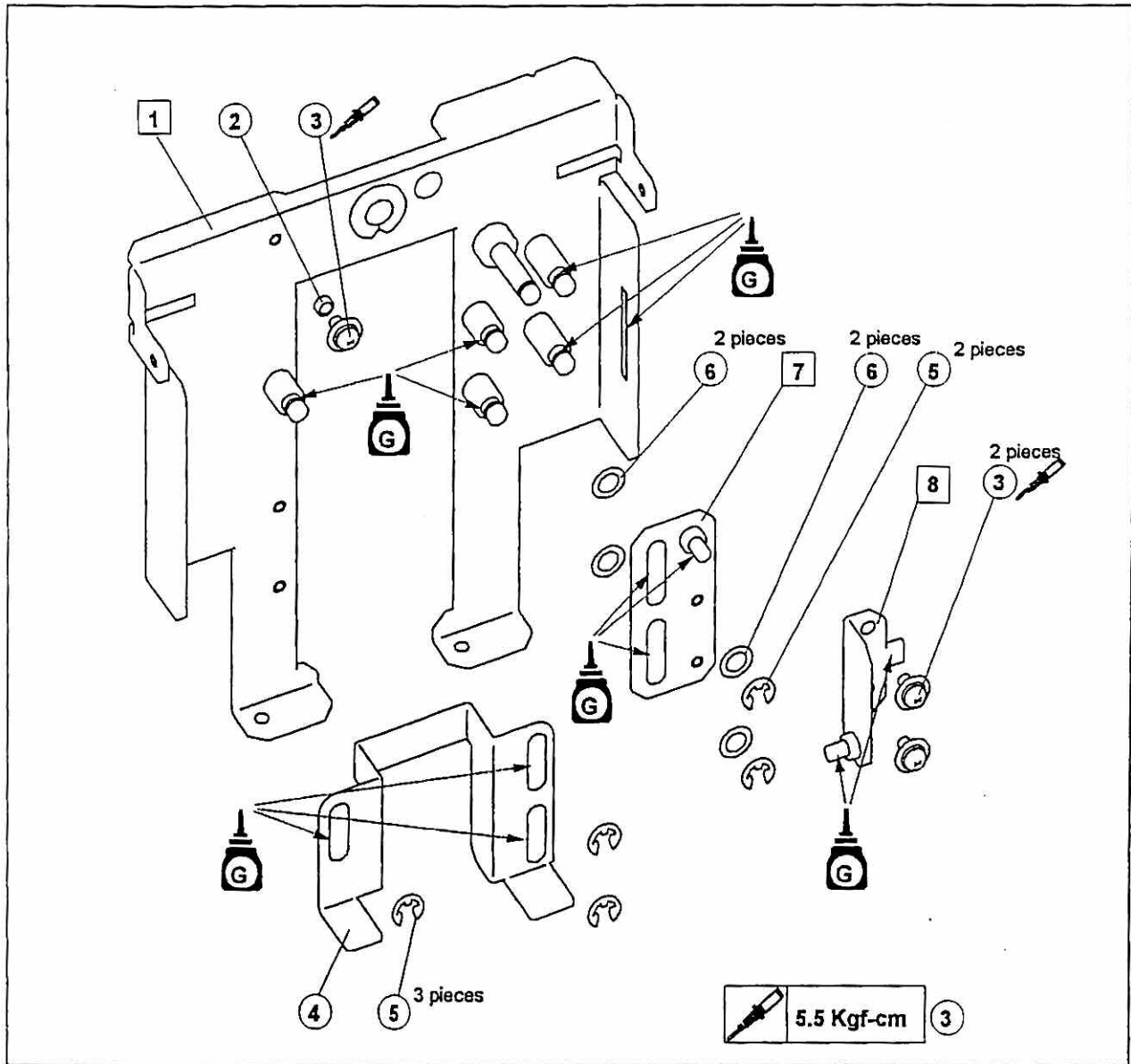
No.	Part name & Work name	Part number	Q'ty
*1	Welding : Scooping plate	NJ01003T1N5 c	1
2	Tension spring	NJ01042T1N5 #2	1
3	Scooping chamber R unit	NJ01005T1N5 a	1
4	Stopper plate R : Scooping plate	NJ01019T1N5 b	1
5	+ Pan head screw with washer & spring, chromate	M2.6 × 5	1
*1-1	Welding : Scooping plate		1
1-2	Drive holder plate : Scooping plate	NJ01017T1N5 g	1
1-3	+ Pan head screw with washer & spring, chromate	M2.6 × 5	2

9.9 DISASSEMBLING AND REASSEMBLING (STEP - C - 6)



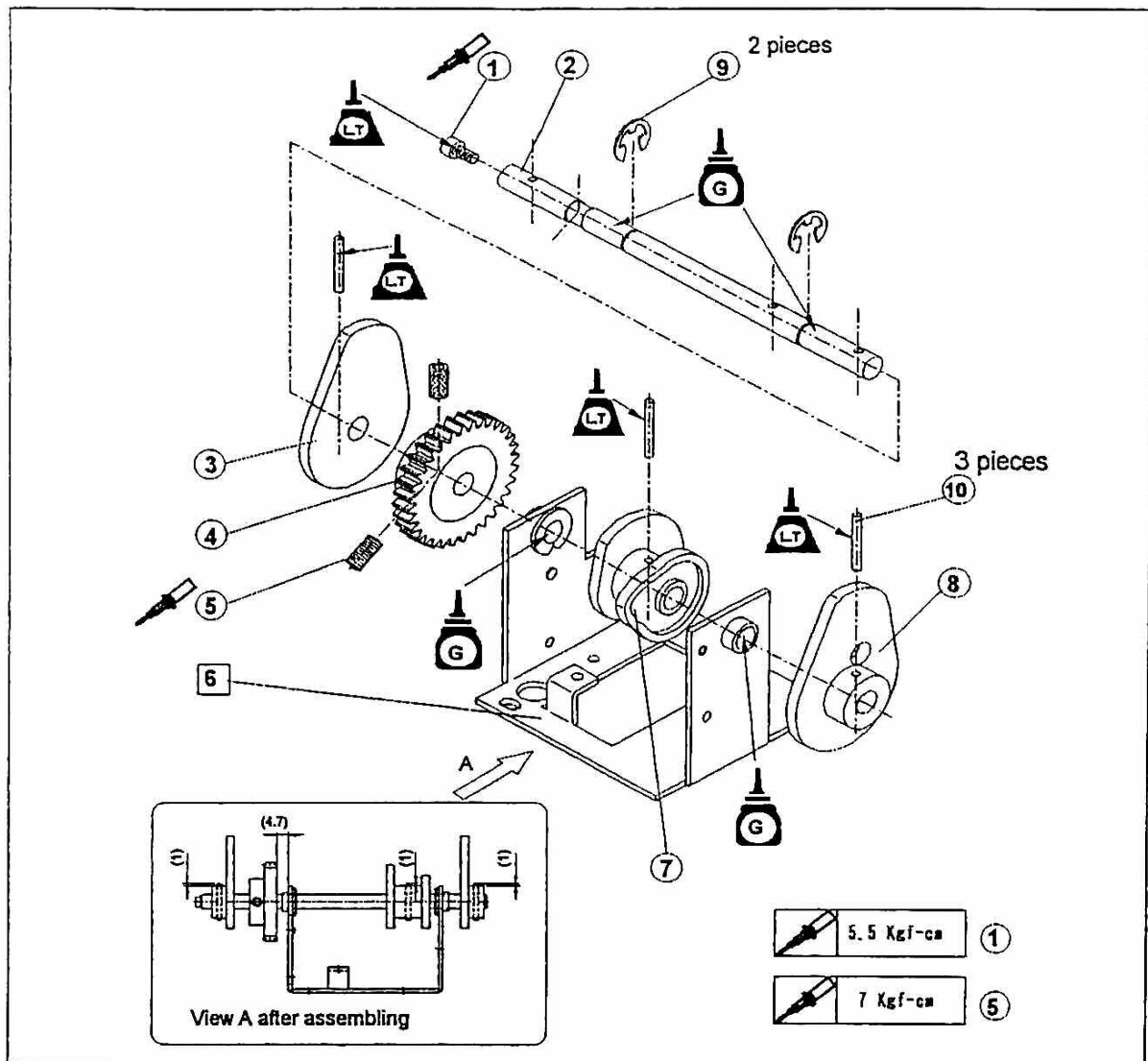
No.	Part name & Work name	Part number	Q'ty
1	Roller shaft : Vibration cam	NJ02021T1N5 a	1
*2	Vibration cam	NJ02022T1N5 b	1
3	Bracket : Vibration cam	NJ02020T1N5 b	1
4	+ Pan head screw with washer & spring, chromate	M2.6 × 5	2

9.8 DISASSEMBLING AND REASSEMBLING (STEP - C - 4)



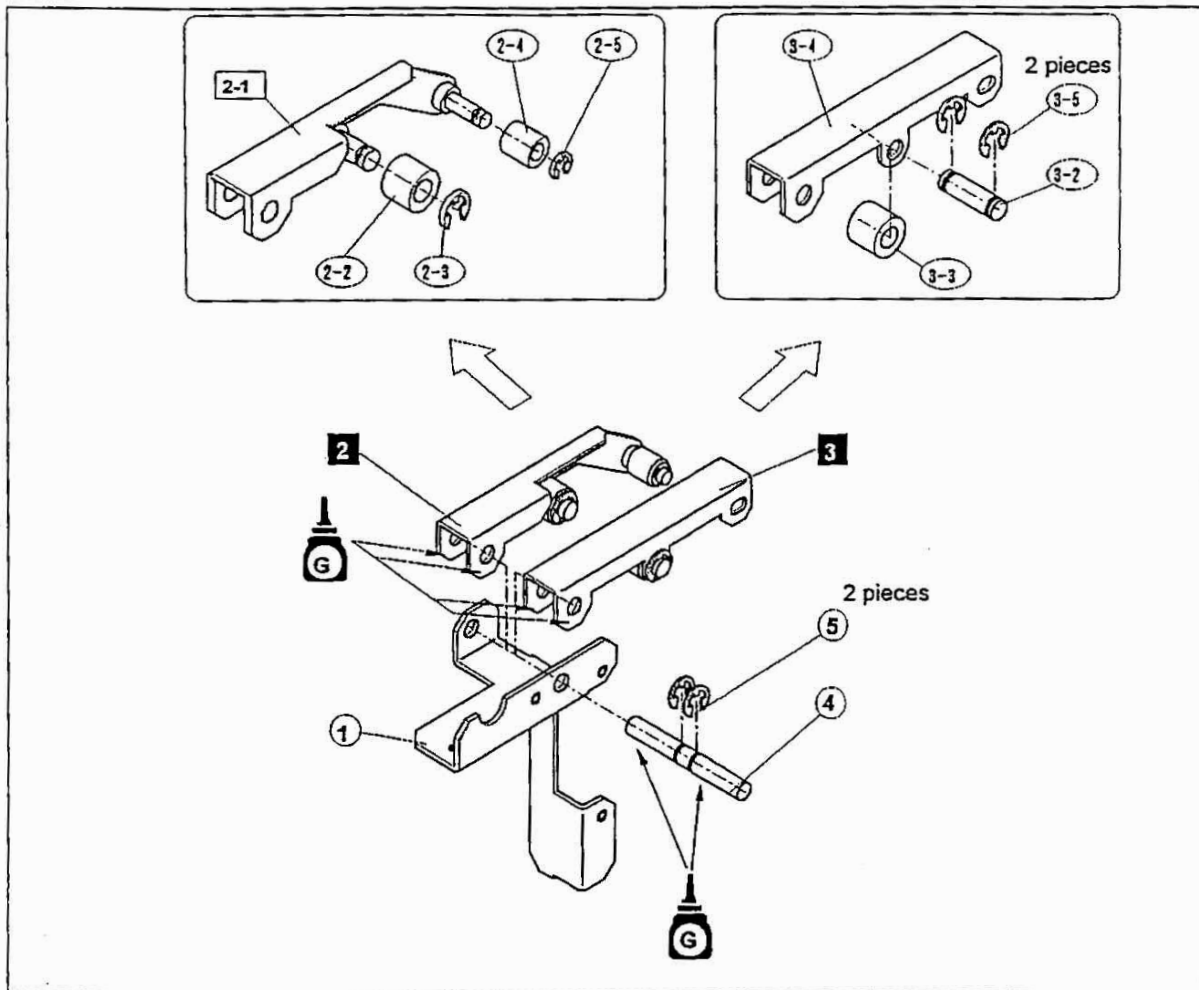
No.	Part name & Work name	Part number	Q'ty
1	Brush holder plate (front), caulking	NJ02014T1N5 a	1
2	Hoisting bush, chromate	φ2.6 × 1.6	1
3	+ Pan head screw with washer & spring, chromate	M2.6 × 5	3
4	Shutter plate	NJ02019T1N5 a	1
5	Snap ring (E)	E-3	5
6	Polyslider	4.5×7.2×10.13	4
7	Sliding plate 1, caulking	NJ02026T1N5 a	1
8	Sliding plate 2, caulking	NJ02029T1N5 a	1

9.11 DISASSEMBLING AND REASSEMBLING (STEP - D - 1 - 1)



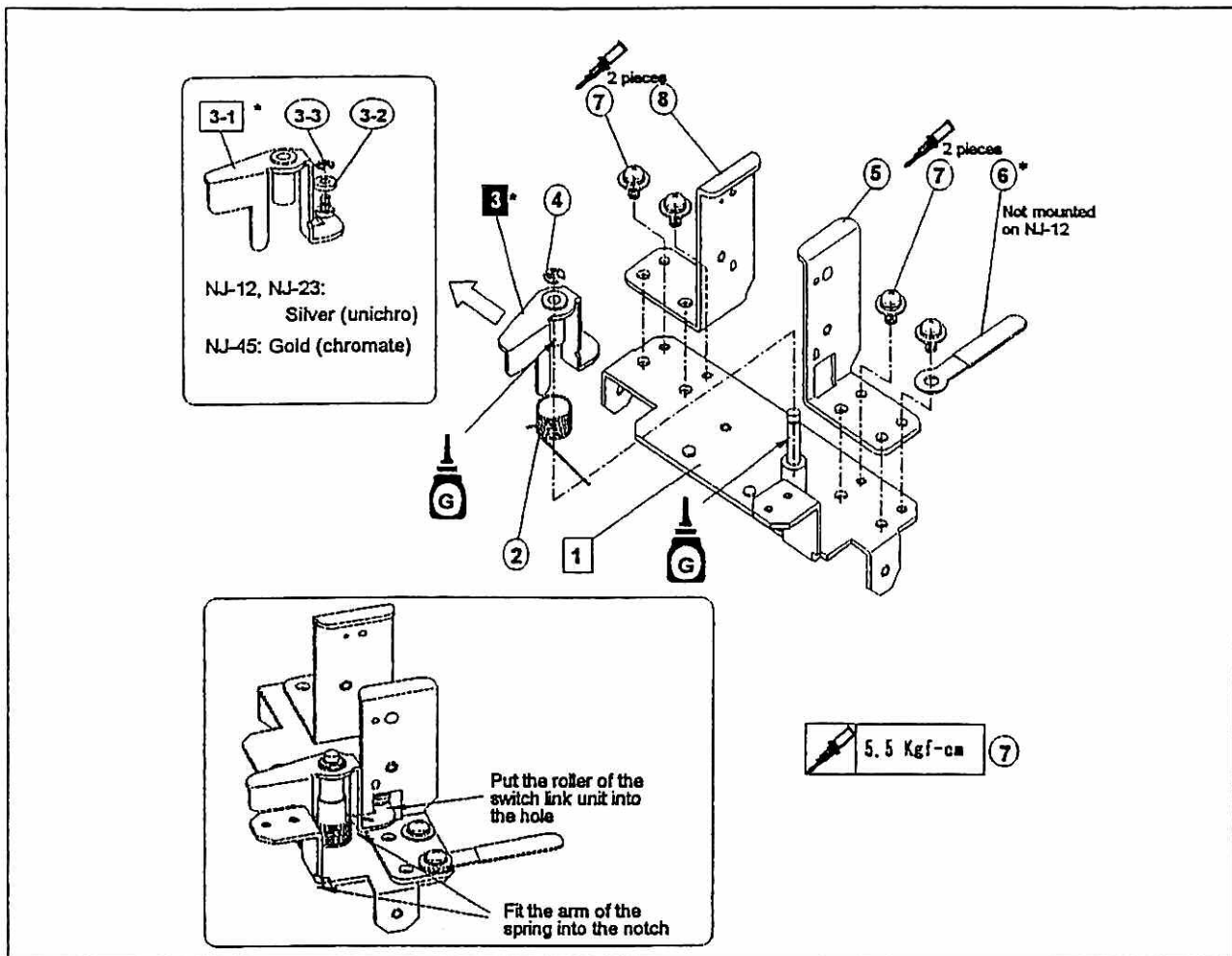
No.	Part name & Work name	Part number	Q'ty
1	Hexagon socket head cap screw	M2.6 × 5	1
2	Drive shaft	NJ04017T1N5 a	1
3	Drive cam L	NJ04014T1N5 d	1
4	Drive gear 1	NJ04013T1N5 b	1
5	Hexagon socket head cap screw	M4 × 8	2
6	Drive shaft bracket unit	NJ04011T1N5 a	1
7	Brush shutter cam : Additional processing	NJ04032T1N5	1
8	Drive cam R	NJ04015T1N5 d	1
9	Snap ring (E)	E-5	2
10	Spring pin	φ2.5 × 16	3

9.12 DISASSEMBLING AND REASSEMBLING (STEP - D - 1 - 2)



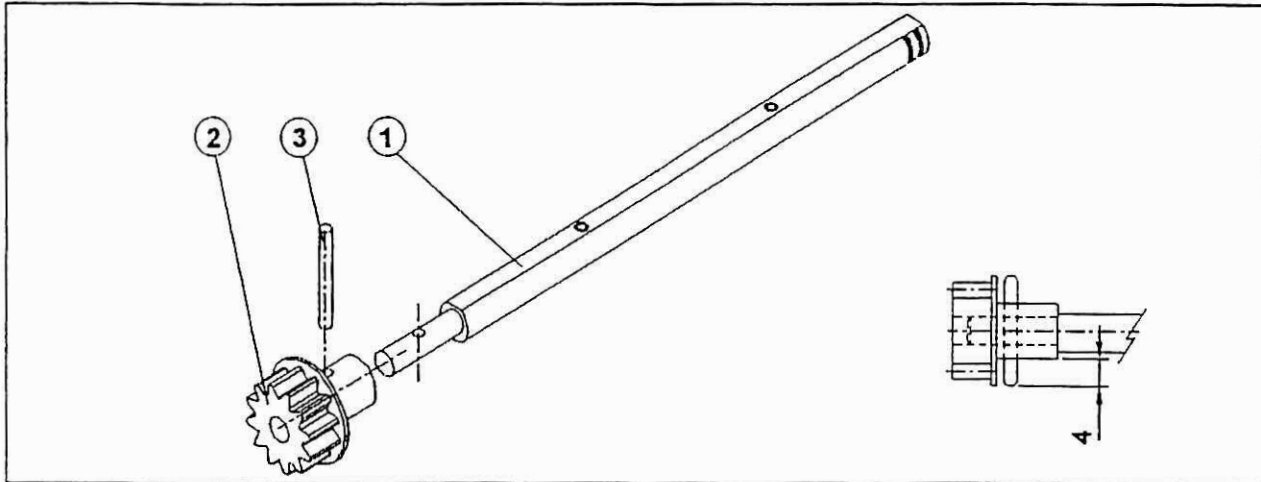
No.	Part name & Work name	Part number	Q'ty
1	Cam link holder unit	NJ04023T1N5 d	1
2	Shutter link unit	NJ04003T1N5 a	1
3	Brush link unit	NJ04004T1N5 a	1
4	Cam link shaft	NJ04024T1N5 a	1
5	Snap ring (E)	E-2	2
2-1	Shutter link, caulking	NJ04018T1N5 a	1
2-2	Juracon spacer	C-406	1
2-3	Snap ring (E)	E-3	1
2-4	Juracon spacer	C-306	1
2-5	Snap ring (E)	E-2	1
3-1	Snap ring (E)	E-3	2
3-2	Brush link shaft	NJ04022T1N5 a	1
3-3	Juracon spacer	C-407	1
3-4	Brush link	NJ04021T1N5 b	1

9.13 DISASSEMBLING AND REASSEMBLING (STEP - D - 3)



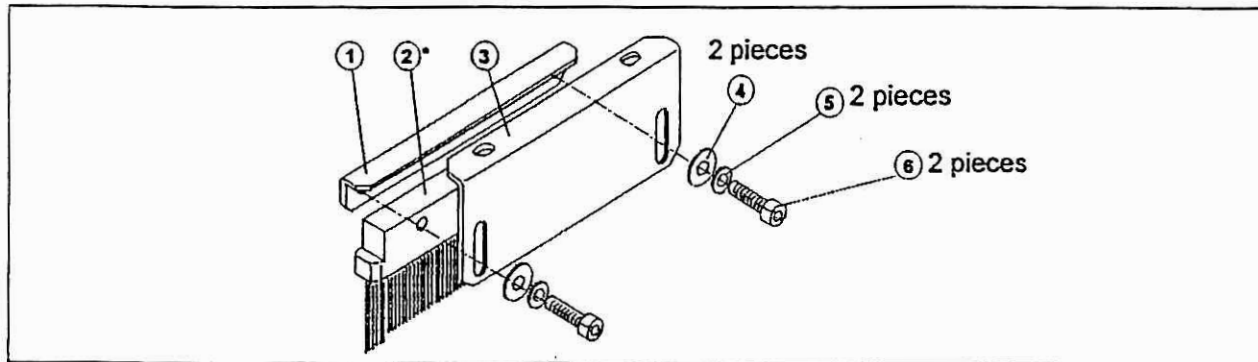
No.	Part name & Work name	Part number	Q'ty
1	Rail supporter 2, caulking	NJ03041T1N5	1
2	Switch link spring	NJ03047T1N5 a	1
*3	Switch link unit	NJ03009T1N5 #1	1
4	Snap ring (E)	E-2	1
5	Sensor bracket L	NJ03035T1N5 d	1
*6	Coaching clip	CS-9	1
7	+ Pan head screw with washer & spring, chromate	M2.6 × 5	4
8	Sensor bracket R	NJ03036T1N5 d	1
*3-1	Switch link, caulking	NJ03043T1N5 #1	1
3-2	Juracon spacer	C-2001	1
3-3	Snap ring (E)	E-1.5	1

9.14 DISASSEMBLING AND REASSEMBLING (STEP - D - 7)

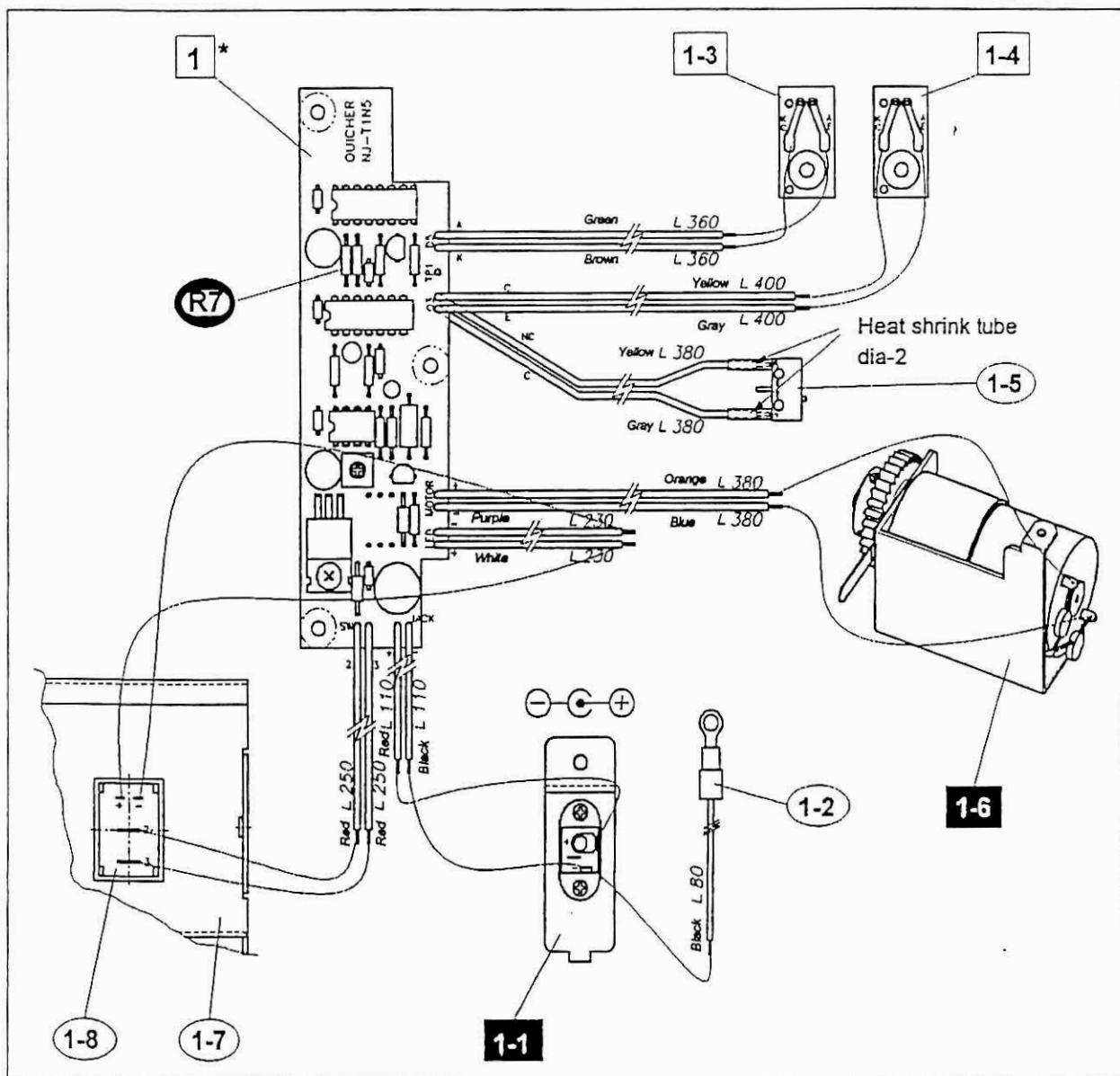


No.	Part name & Work name	Part number	Q'ty
1	Brush driving shaft	NJ02036T1N5 a	1
2	Brush driving gear 2	NJ02035T1N5 b	1
3	Spring pin	φ2 × 16	1

9.15 DISASSEMBLING AND REASSEMBLING (STEP - D - 10)

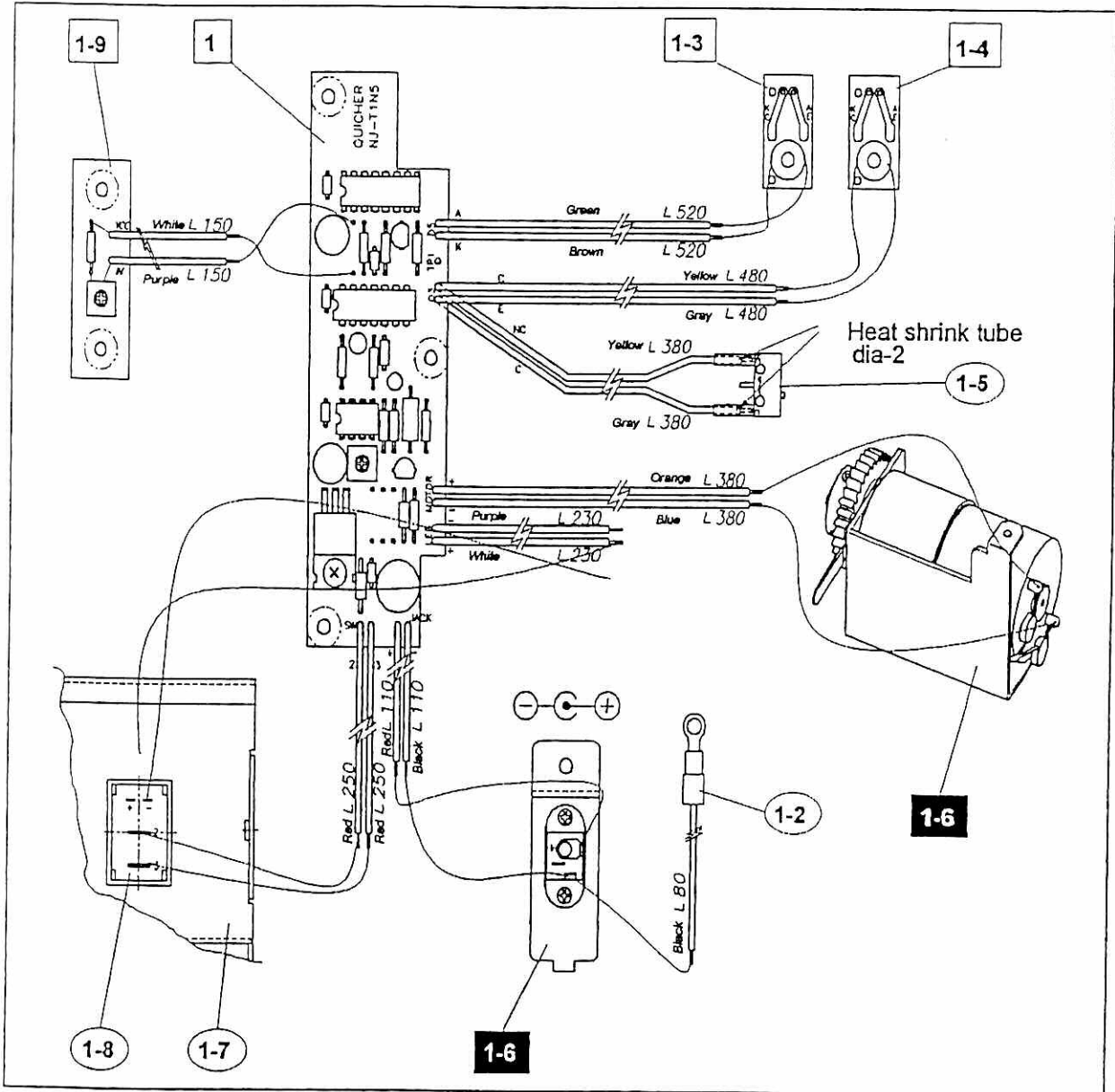


No.	Part name & Work name	Part number	Q'ty
1	Brush bracket 2	NJ02040T1N5 a	1
*2	Brush	NJ02039T1N5 a #1	1
3	Brush bracket 1	NJ02038T1N5 b	1
4	Washer	M2.6	2
5	Spring washer	M2.6	2
6	Hexagon socket head cap screw	M2.6 × 10	2



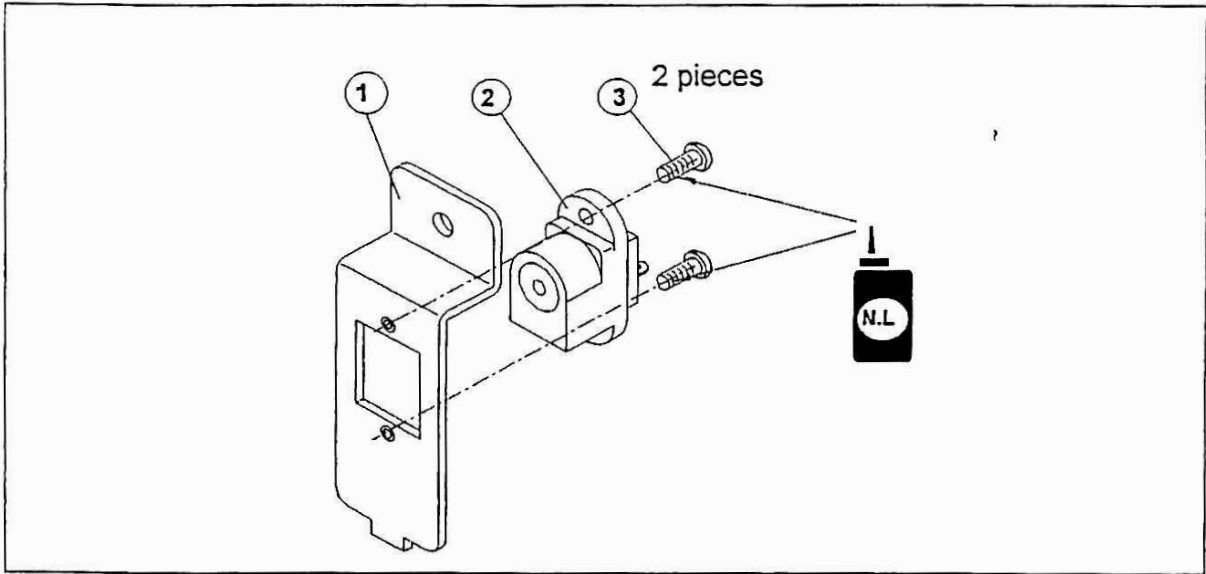
No.	Part name & Work name	Part number	Q'ty
1	Main PCB diagram		1
1-1	DC jack unit	NJ02003T1N5 a	1
1-2	Pressure connection terminal with insulating cover	TMEV 0.3-3	1
1-3	Light emitter sensor unit	NJ09012T1N5	1
1-4	Light receiver sensor unit	NJ09014T1N5	1
1-5	Microswitch	D2F-01F	1
1-6	Motor unit	NJ04007T1N5	1
1-7	Front cover	NJ08011T1N5 b	1
1-8	Power switch	JW-S11RKKR	1

9.17 DISASSEMBLING AND REASSEMBLING (STEP - E - 1)



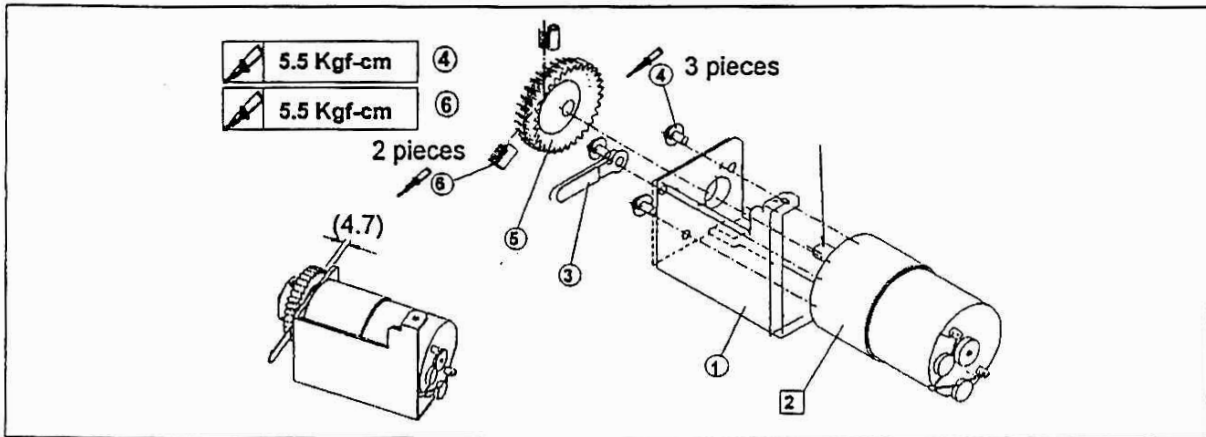
No.	Part name & Work name	Part number	Q'ty
*1	Main PCB diagram		1
1-1	DC jack unit	NJ02003T1N5 a	1
1-2	Pressure connection terminal with insulating cover	TMEV 0.3-3	1
1-3	Light emitter sensor unit	NJ09012T1N5	1
1-4	Light receiver sensor unit	NJ09014T1N5	1
1-5	Microswitch	D2F-01F	1
1-6	Motor unit	NJ04007T1N5	1
1-7	Front cover	NJ08011T1N5 b	1
1-8	Power switch	JW-S11RKKR	1
1-9	VR board	NJ09016T1N5	1

9.18 DISASSEMBLING AND REASSEMBLING (STEP - E - 1 - 1)



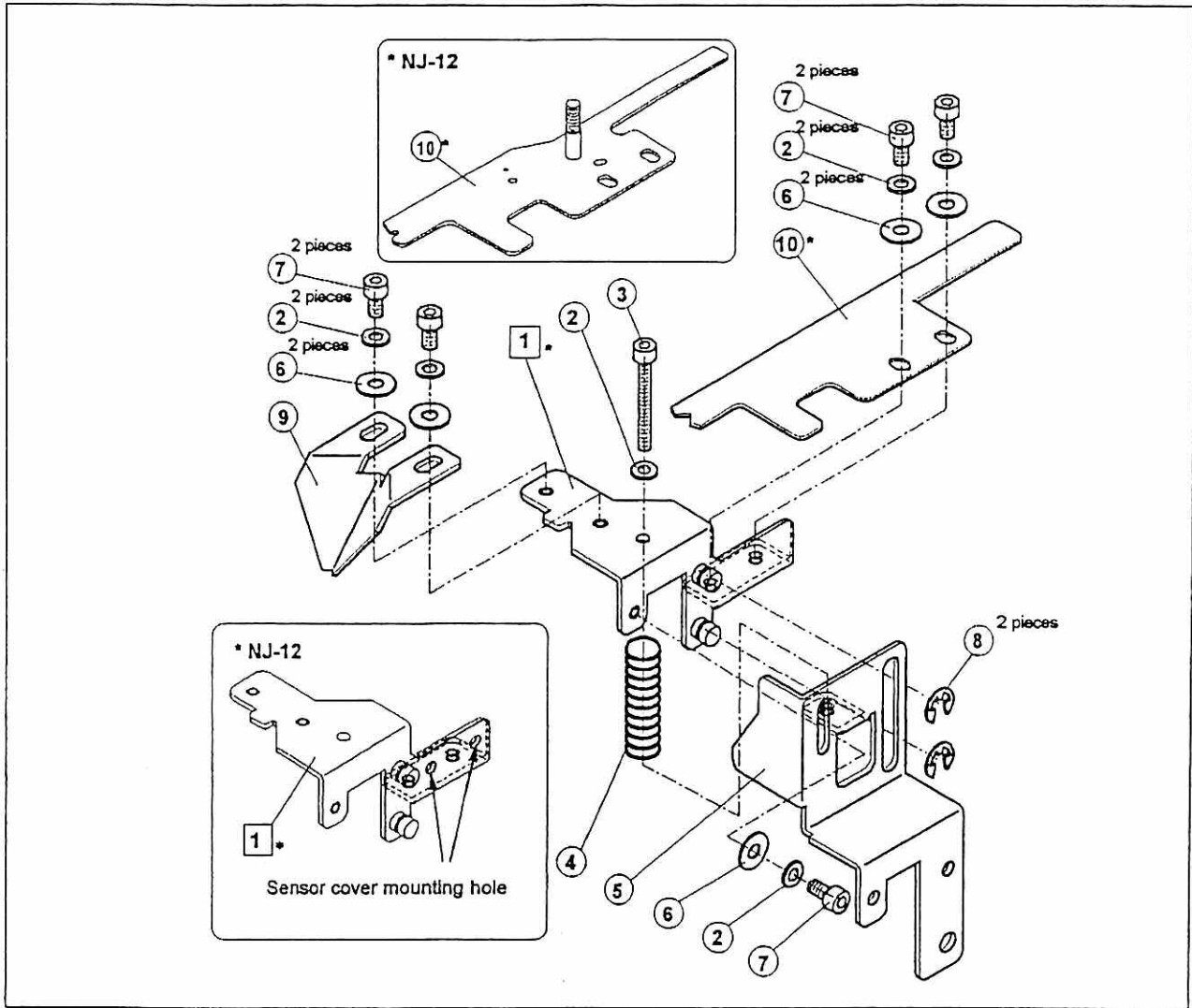
No.	Part name & Work name	Part number	Q'ty
1	Jack bracket	NJ02032T1N5 a	1
2	DC jack	NJ02033T1N5 a	1
3	+ Pan head screw, chromate	M2 × 5	2

9.19 DISASSEMBLING AND REASSEMBLING (STEP - E - 1 - 6)



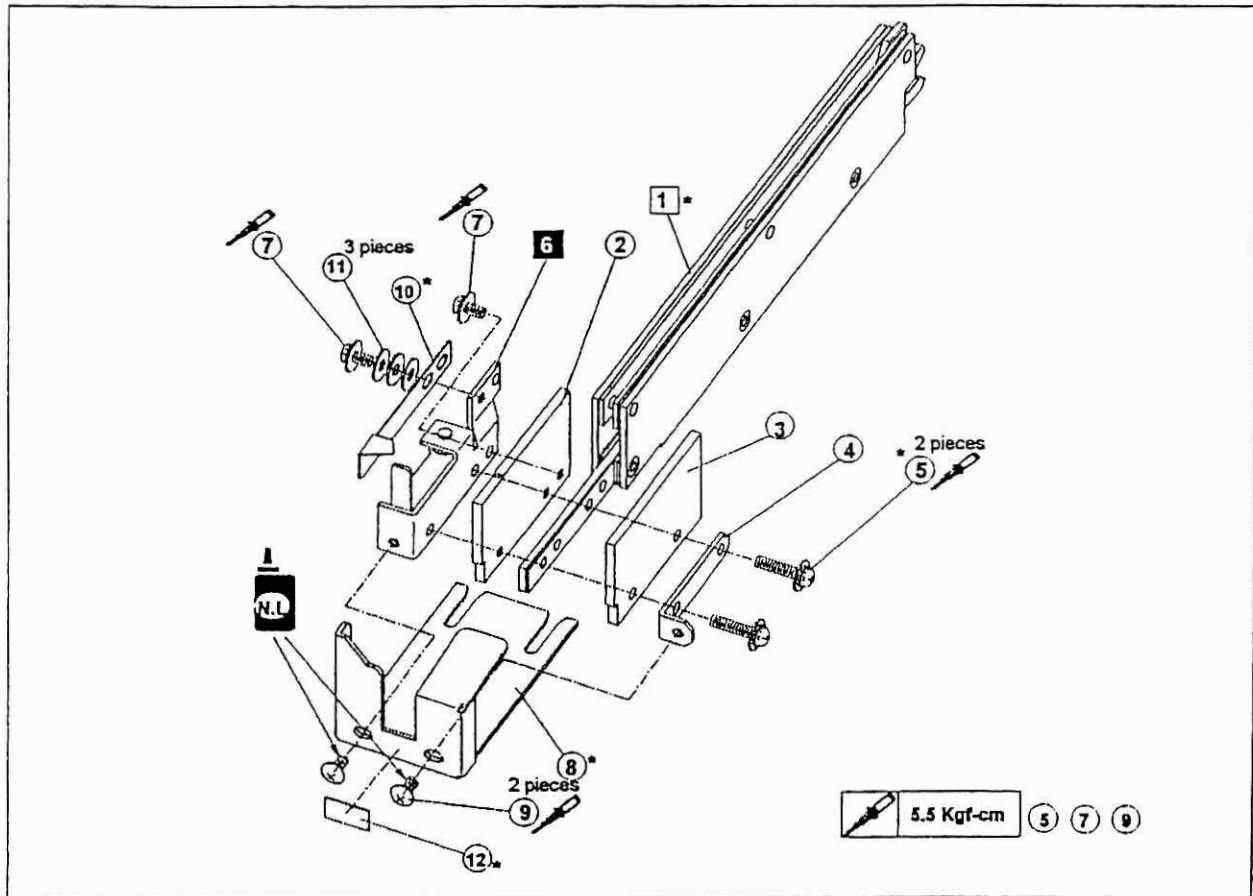
No.	Part name & Work name	Part number	Q'ty
1	Motor bracket	NJ04012T1N5 d	1
2	Motor unit	NJ04005T1N5 #2	1
3	Coaching clip	CS-9	1
4	+ Pan head screw with washer & spring, chromate	M3 × 6	3
5	Driving gear 1	NJ04013T1N5 b	1
6	Hexagon socket head cap screw	M4 × 8	2

9.20 DISASSEMBLING AND REASSEMBLING (STEP - E - 8)



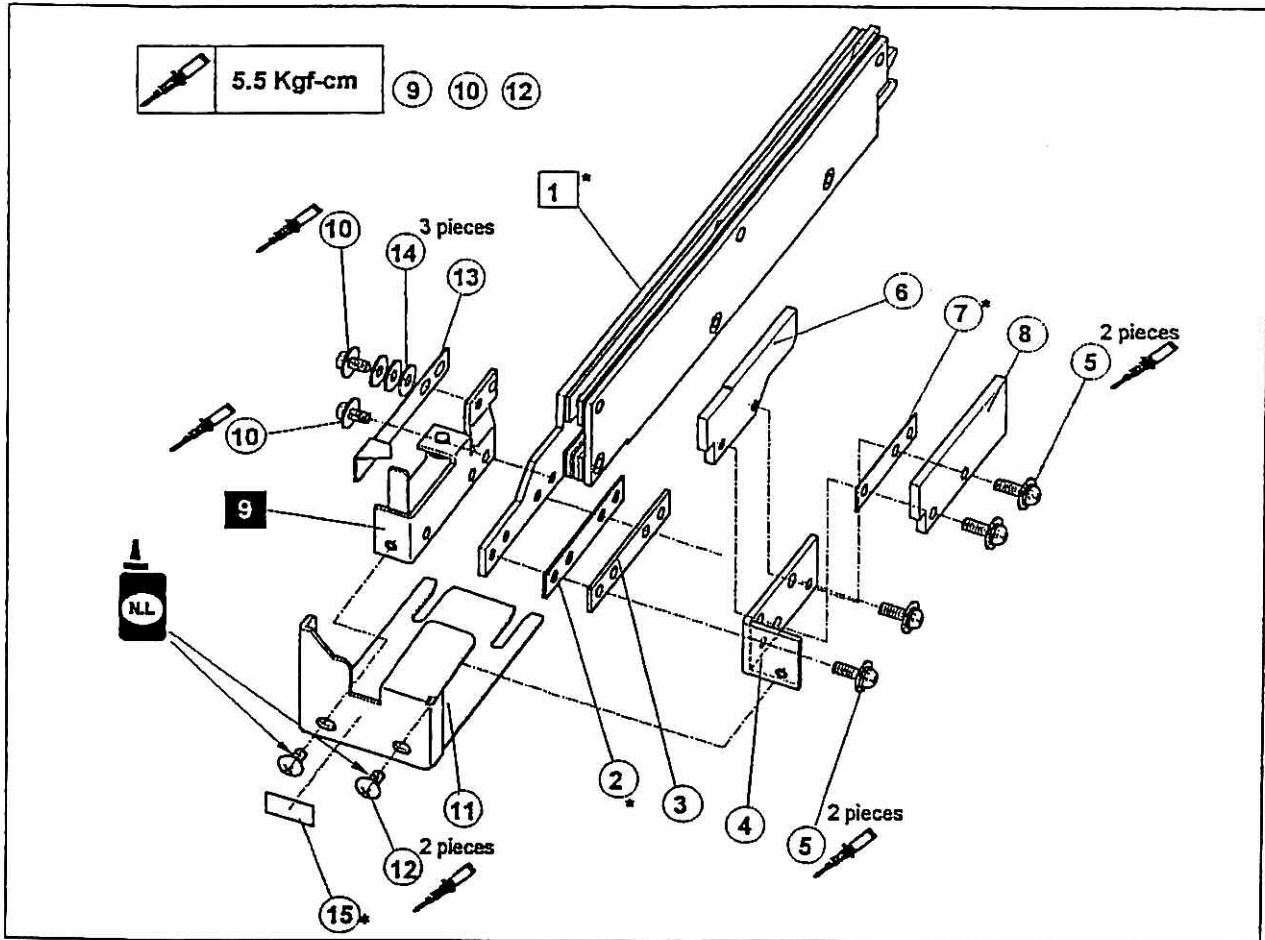
No.	Part name & Work name	Part number	Q't y
*1	Bit guide bracket 2, caulking	NJ05012T1N5 a #1	1
2	Spring washer	M2.6	6
3	Hexagon socket head cap screw	M2.6 × 20	1
4	Compression spring	A07-02	1
5	Bit guide bracket 1	NJ05011T1N5 c	1
6	Washer	M2.6	5
7	Hexagon socket head cap screw	M2.6 × 5	5
8	Snap ring (E)	E-3	2
9	Bit guide	NJ05016T1N5 a	1
*10	Screw guide (Screw holding plate)	NJ05015T1N5 b	1

9.21 DISASSEMBLING AND REASSEMBLING (STEP - F - 5) NJ23, NJ-45



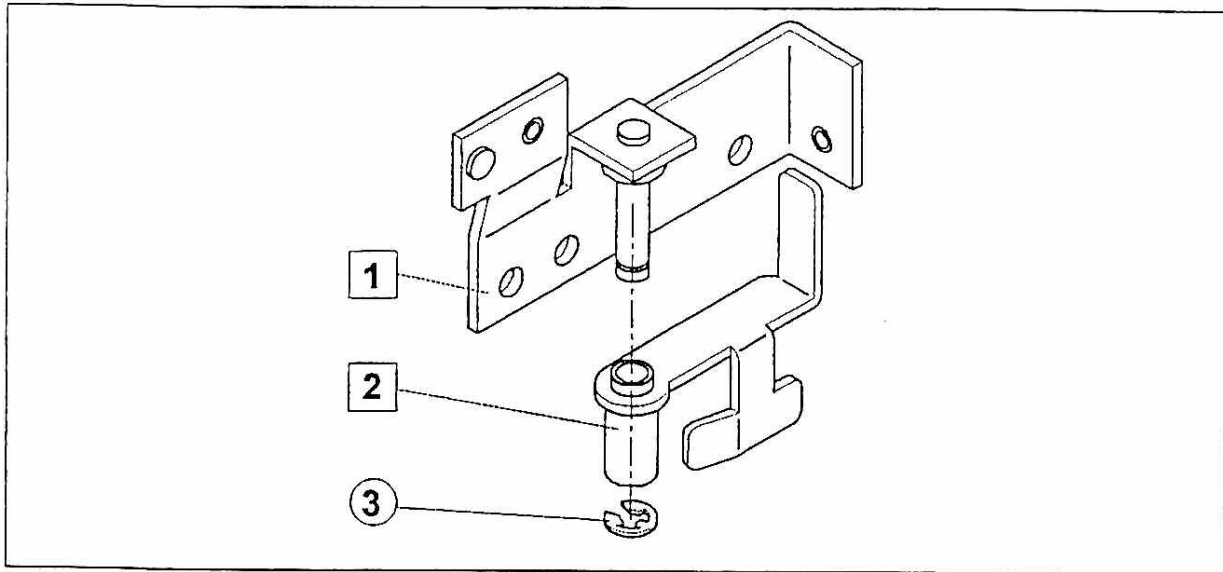
No.	Part name & Work name	Part number	Q'ty
*1	Rail assembly, caulking	NJ06004T1N5 a #6	1
2	Rail 2 L	NJ06059T1N5 a	1
3	Rail 2 R	NJ06023T1N5 e	1
4	Front rail brace	NJ06018T1N5 b	1
*5	+ Pan head screw with washer & spring, chromate	M2.6 × 12	2
6	Stopper bracket	NJ06002T1N5 c	1
7	+ Pan head screw with washer & spring, chromate	M2.6 × 5	2
*8	Rail front plate : M3	NJ06019T1N5 d	1
9	+ Oval countersunk screw, Ni plated	M2.6 × 5	2
*10	Stopper : M3	NJ06057T1N5 a	1
11	Washer	M2.6	3
*12	Label		1

9.22 DISASSEMBLING AND REASSEMBLING (STEP - F - 5) NJ-12



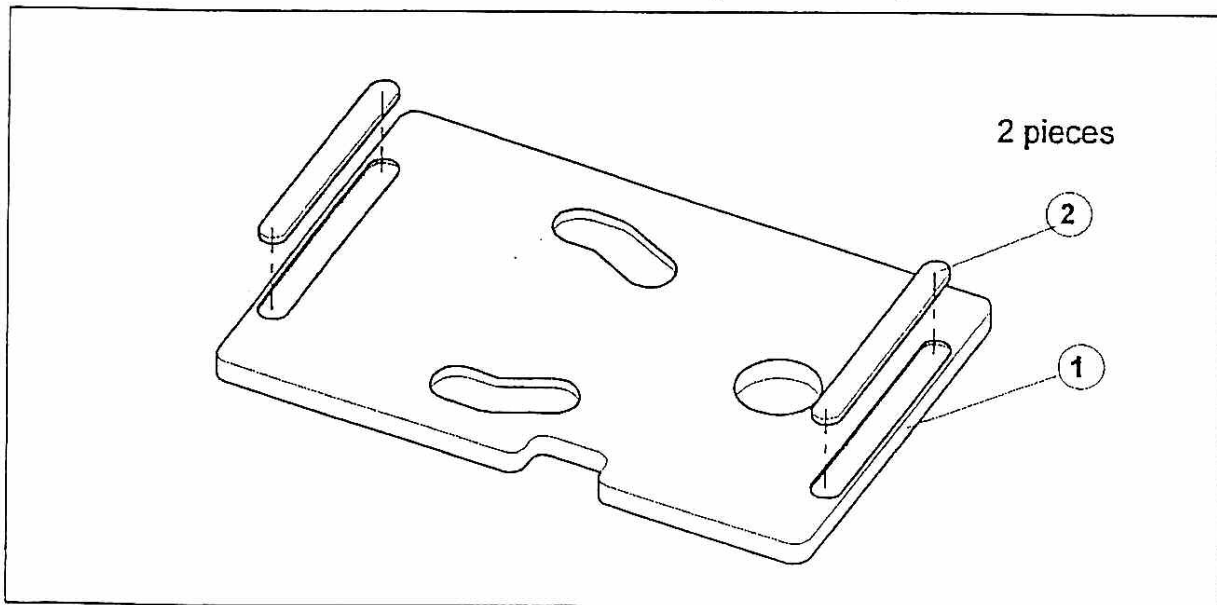
No.	Part name & Work name	Part number	Q'ty
*1	Rail assembly : Caulking	NJ06004T1N5 a #	1
*2	Shim : Stopper bracket : M17	NJ06046T1N5 #	
3	Shim : Stopper bracket : M17	NJ06046T1N5 #1	1
4	Rail collar A : M17	NJ06038T1N5	1
5	+ Pan head driver screw with washer & spring, chromate	M2.6 × 8	4
6	Rail 2 L : M17	NJ06040T1N5 b	1
*7	Shim : Front rail brace	NJ06051T1N5 #2	
8	Rail 2 R : M17	NJ06041T1N5 a	1
9	Stopper bracket	NJ06002T1N5 c	1
10	+ Pan head screw with washer & spring, chromate	M2.6 × 5	2
11	Front rail plate : M17	NJ06039T1N5	1
12	+ Countersunk screw, Ni plated	M2.6 × 5	2
13	Stopper : M17	NJ06061T1N5 a	1
14	Washer	M2.6	3
*15	Label		1

9.23 DISASSEMBLING AND REASSEMBLING (STEP - F - 5 - 6)



No.	Part name & Work name	Part number	Q'ty
1	Stopper bracket, caulking	NJ06053T1N5	1
2	Switch link holder, caulking	NJ06056T1N5	1
3	Snap ring (E)	E-2	1

9.24 DISASSEMBLING AND REASSEMBLING (STEP - F - 6)



No.	Part name & Work name	Part number	Q'ty
1	Top cover	NJ08015T1N5 a	1
2	Magnet : Top cover	NJ08016T1N5 a	2



Corporate Headquarters

10000 S.E. Pine St.
Portland, OR 97216
(800) 852-1368
FAX (800) 582-9015
www.aimco-global.com

1204 E. Maple Rd.
Troy, MI 48083
(800) 852-1368
FAX (800) 582-9015

Ave. Morones Prieto 2110 Pte.
Col. Loma Larga
Monterrey, NL CP 64710, Mexico
52-81 1001-1600
FAX 52-81 1001-1630