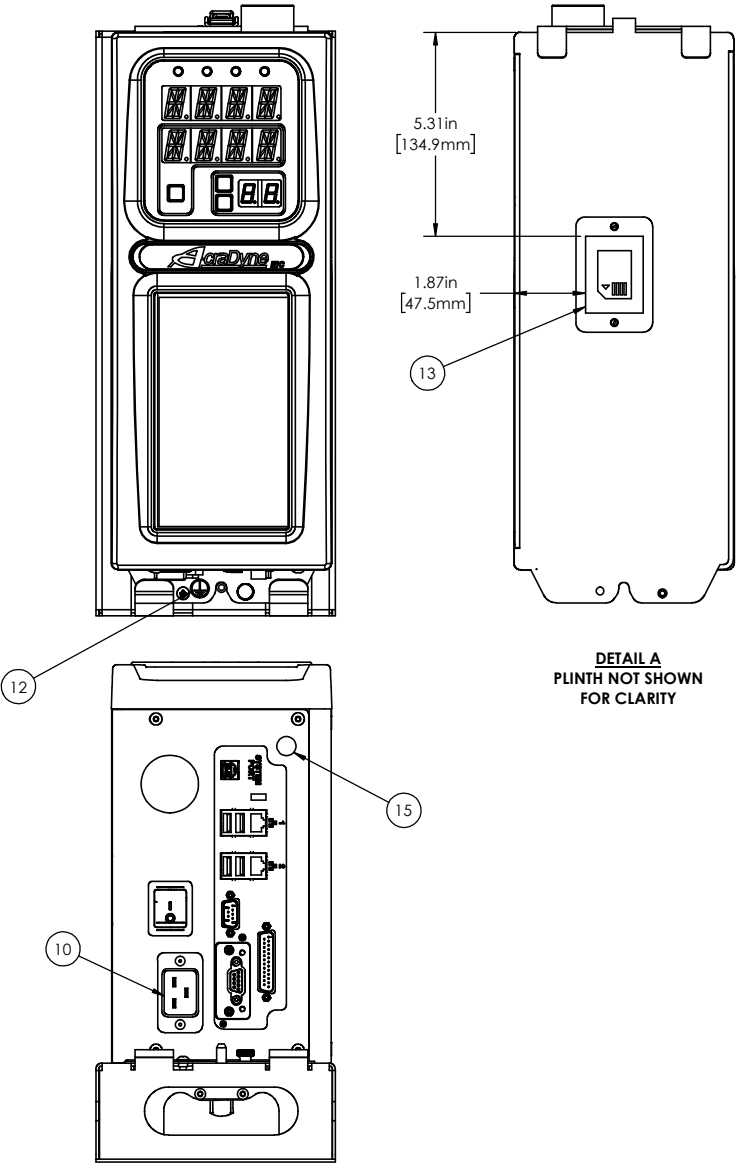
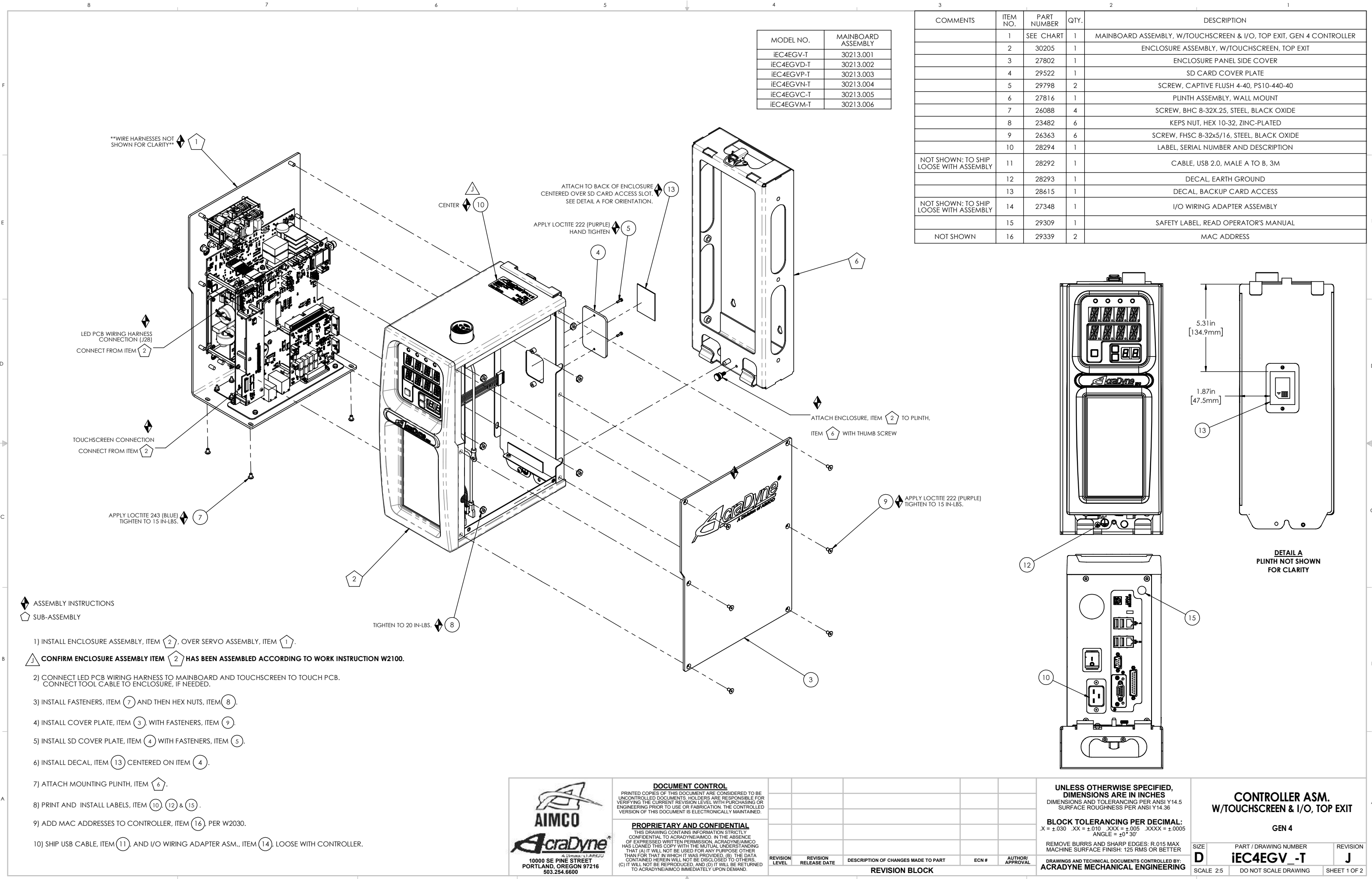


MODEL NO.	MAINBOARD ASSEMBLY
IEC4EGV-T	30213.001
IEC4EGVD-T	30213.002
IEC4EGVP-T	30213.003
IEC4EGVN-T	30213.004
IEC4EGVC-T	30213.005
IEC4EGVM-T	30213.006

COMMENTS	ITEM NO.	PART NUMBER	QTY.	DESCRIPTION
	1	SEE CHART	1	MAINBOARD ASSEMBLY, W/TOUCHSCREEN & I/O, TOP EXIT, GEN 4 CONTROLLER
	2	30205	1	ENCLOSURE ASSEMBLY, W/TOUCHSCREEN, TOP EXIT
	3	27802	1	ENCLOSURE PANEL SIDE COVER
	4	29522	1	SD CARD COVER PLATE
	5	29798	2	SCREW, CAPTIVE FLUSH 4-40, PS10-440-40
	6	27816	1	PLINTH ASSEMBLY, WALL MOUNT
	7	26088	4	SCREW, BHC 8-32X.25, STEEL, BLACK OXIDE
	8	23482	6	KEPS NUT, HEX 10-32, ZINC-PLATED
	9	26363	6	SCREW, FHSC 8-32x5/16, STEEL, BLACK OXIDE
	10	28294	1	LABEL, SERIAL NUMBER AND DESCRIPTION
NOT SHOWN: TO SHIP LOOSE WITH ASSEMBLY	11	28292	1	CABLE, USB 2.0, MALE A TO B, 3M
	12	28293	1	DECAL, EARTH GROUND
	13	28615	1	DECAL, BACKUP CARD ACCESS
NOT SHOWN: TO SHIP LOOSE WITH ASSEMBLY	14	27348	1	I/O WIRING ADAPTER ASSEMBLY
	15	29309	1	SAFETY LABEL, READ OPERATOR'S MANUAL
NOT SHOWN	16	29339	2	MAC ADDRESS



10000 SE PINE STREET
PORTLAND, OREGON 97216
503.254.6600

DOCUMENT CONTROL

PRINTED COPIES OF THIS DOCUMENT ARE CONSIDERED TO BE UNCONTROLLED DOCUMENTS. HOLDERS ARE RESPONSIBLE FOR VERIFYING THE CURRENT REVISION LEVEL WITH PURCHASING OR ENGINEERING PRIOR TO USE OR FABRICATION. THE CONTROLLED VERSION OF THIS DOCUMENT IS ELECTRONICALLY MAINTAINED.

PROPRIETARY AND CONFIDENTIAL

THIS DRAWING CONTAINS INFORMATION STRICTLY CONFIDENTIAL TO ACRADYNE/AIMCO. IN THE ABSENCE OF EXPRESSED WRITTEN PERMISSION, ACRADYNE/AIMCO HAS LOANED THIS COPY WITH THE MUTUAL UNDERSTANDING THAT (A) IT WILL NOT BE USED FOR ANY PURPOSE OTHER THAN FOR THAT IN WHICH IT WAS PROVIDED, (B) THE DATA CONTAINED HEREIN WILL NOT BE DISCLOSED TO OTHERS, (C) IT WILL NOT BE REPRODUCED, AND (D) IT WILL BE RETURNED TO ACRADYNE/AIMCO IMMEDIATELY UPON DEMAND.

REVISION LEVEL	REVISION RELEASE DATE	DESCRIPTION OF CHANGES MADE TO PART	ECN #	AUTHOR/ APPROVAL

REVISION BLOCK

UNLESS OTHERWISE SPECIFIED, DIMENSIONS ARE IN INCHES

DIMENSIONS AND TOLERANCING PER ANSI Y14.5
SURFACE ROUGHNESS PER ANSI Y14.36

BLOCK TOLERANCING PER DECIMAL:
.X = ±.030 .XX = ±.010 .XXX = ±.005 .XXXX = ±.0005
ANGLE = ±0° 30'

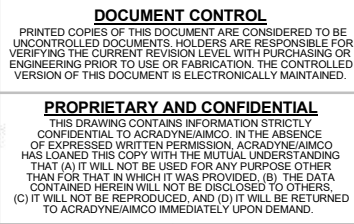
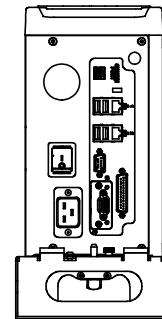
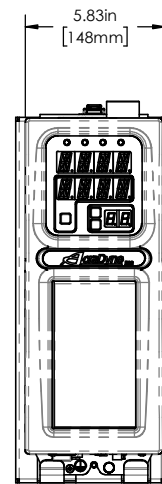
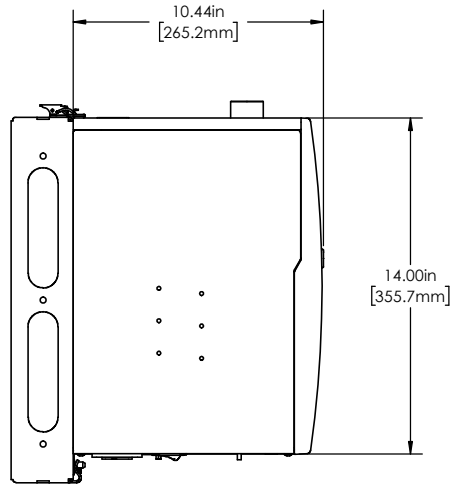
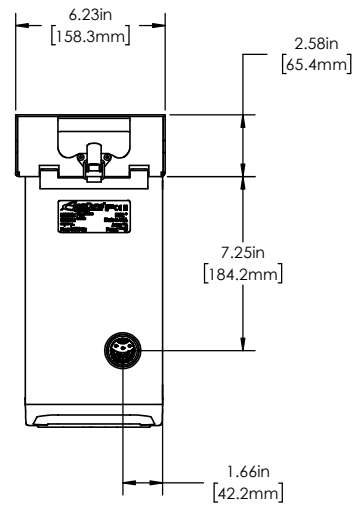
REMOVE BURRS AND SHARP EDGES: R.015 MAX
MACHINE SURFACE FINISH: 125 RMS OR BETTER

DRAWINGS AND TECHNICAL DOCUMENTS CONTROLLED BY:
ACRADYNE MECHANICAL ENGINEERING

**CONTROLLER ASM.
W/TOUCHSCREEN & I/O, TOP EXIT**

GEN 4

SIZE	PART / DRAWING NUMBER	REVISION
D	IEC4EGV -T	J
SCALE: 2:5	DO NOT SCALE DRAWING	SHEET 1 OF 2

[illegible]

**UNLESS OTHERWISE SPECIFIED,
DIMENSIONS ARE IN INCHES**
DIMENSIONS AND TOLERANCING PER ANSI Y14.5
SURFACE ROUGHNESS PER ANSI Y14.36

BLOCK TOLERANCING PER DECIMAL:
X = $\pm .030$ XX = $\pm .010$ XXX = $\pm .005$ XXXX = $\pm .0005$
ANGLE = 90° 30°

REMOVE BURRS AND SHARP EDGES: R.015 MAX
MACHINE SURFACE FINISH: 125 RMS OR BETTER

DRAWINGS AND TECHNICAL DOCUMENTS CONTROLLED BY:
ACRADYNE MECHANICAL ENGINEERING

CONTROLLER ASM. W/TOUCHSCREEN & I/O, TOP EXIT

GEN 4

SIZE	PART / DRAWING NUMBER	REVISION
D	IEC4EGV_-T	J
SCALE 1:4	DO NOT SCALE DRAWING	SHEET 2 OF 2