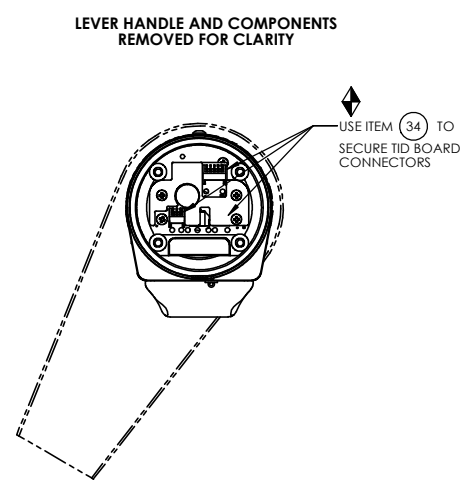
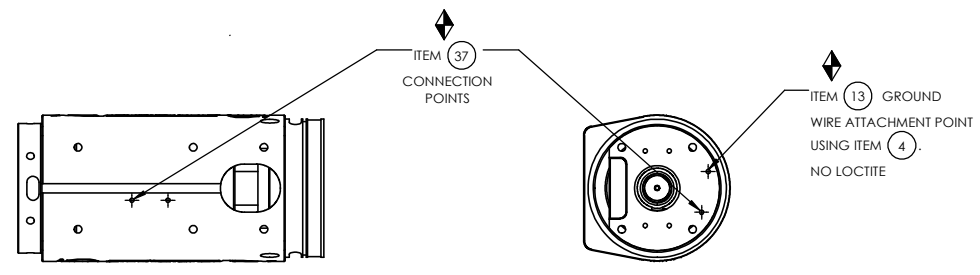


COMMENTS	ITEM NO.	PART NUMBER	QTY.	DESCRIPTION
	1	26212	1	MOTOR ASM., 7000 SERIES
	2	25574	4	STANDOFF M-F, 4-40x1/4, 3/16 HEX, SS
	3	27727	1	TID BOARD, POPULATED W/AMP
	4	25573	7	SCREW PHP 4-40 X 3/16 18-8 SS
	5	SEE CHART	1	GEAR BOX ASM.
	6	26299	1	O-RING, PINION
	7	29279	6	SCREW, BHSC, 10-32 X 3/8, TORX HEAD, NYLON PELLETT, STEEL
	8	26226	1	O-RING, LED COVER
	9	20534	1	LABEL, SERIAL/MODEL NUMBER
	10	26223	1	LED COVER
	11	26279	1	LEVER HANDLE
	12	26228	4	SCREW, BHSC 10-32X1.50, STEEL, BLACK OXIDE
	13	27660	1	TOOL CONNECTOR ASM., STRAIGHT
	14	25745	5	SCREW, BHSC 4-40 STEEL, BLACK OXIDE
	15	28211	1	(4) LINE MALE/FEMALE JUMPER ASM.
	16	26319	3	SCREW, BHSC 6-32 X .188, 18-8 SS
	17	26297	1	TRAY, WIRE, "D" & LEVER HANDLE
	18	31801	6	SCREW, BHSC 10-32 X .375, STAINLESS STEEL, BLK OXIDE
	19	26285	1	LEVER TRIGGER PCB ASM.
NOT SHOWN	20	26526	1	TRIGGER CABLE
	21	26461	2	SCREW, FHC 4-40 X .50 LG., STEEL, BLACK OXIDE
	22	26532	1	GEN 3 TRIGGER ASSY, CAST
	23	20132	1	THROTTLE SPRING
	24	20061	2	SCREW, LEVER
	25	26083	1	HANDLE COVER
	26	26084	1	HANDLE COVER, MFB
	27	24706	1	REV BUTTON SUB-ASSEMBLY
	28	24683	1	SPRING, REV BUTTON
	29	24679	1	RETAINING RNG
	30	24938	10	SCREW, FHSC 4-40X.188, STEEL, BLACK OXIDE
	31	SEE CHART	1	GEAR CASE COVER
	32	26897	1	CHOOSE REACTION BAR
	33	26243	1	RETAINING RING, SPIRAL, Ø2.864 X Ø2.464 X .078
NOT SHOWN	34	27464	A/R	TWISTED WAXED LINEN TWINE
	35	29336	1	TID BOARD WIRE INSULATOR
	36	29337	3	STANDOFF, M-F, 4-40 X 1/8, SS
	37	31410	1	GROUND WIRE ASSEMBLY, 18 AWG, 6000 & 7000 HT SERIES



TOOL MODEL	GEAR BOX ASM.	GEAR CASE COVER
AES4A771000B	28110	26298
AES4A772500B	28111	26295

◆ ASSEMBLY INSTRUCTIONS  
 ◻ SUB-ASSEMBLY

- GEARS & SPLINES: LUBRICATE WITH DOW CORNING MOLYKOTE BR2 PLUS GREASE.
- BEARINGS: LUBRICATE WITH CHEVRON SR1 GREASE
- O-RINGS: LUBRICATE WITH O-RING LUBE



**DOCUMENT CONTROL**  
 PRINTED COPIES OF THIS DOCUMENT ARE CONSIDERED TO BE UNCONTROLLED DOCUMENTS. HOLDERS ARE RESPONSIBLE FOR VERIFYING THE CURRENT REVISION LEVEL WITH PURCHASING OR ENGINEERING PRIOR TO USE OR FABRICATION. THE CONTROLLED VERSION OF THIS DOCUMENT IS ELECTRONICALLY MAINTAINED.

**PROPRIETARY AND CONFIDENTIAL**  
 THIS DRAWING CONTAINS INFORMATION STRICTLY CONFIDENTIAL TO ACRADYNE/AIMCO. IN THE ABSENCE OF EXPRESSED WRITTEN PERMISSION, ACRADYNE/AIMCO HAS LOANED THIS COPY WITH THE MUTUAL UNDERSTANDING THAT (A) IT WILL NOT BE USED FOR ANY PURPOSE OTHER THAN FOR THAT IN WHICH IT WAS PROVIDED, (B) THE DATA CONTAINED HEREIN WILL NOT BE DISCLOSED TO OTHERS, (C) IT WILL NOT BE REPRODUCED, AND (D) IT WILL BE RETURNED TO ACRADYNE/AIMCO IMMEDIATELY UPON DEMAND.

REVISION LEVEL	REVISION RELEASE DATE	DESCRIPTION OF CHANGES MADE TO PART	ECN #	AUTHOR/ APPROVAL

**UNLESS OTHERWISE SPECIFIED, DIMENSIONS ARE IN INCHES**  
 DIMENSIONS AND TOLERANCING PER ANSI Y14.5  
 SURFACE ROUGHNESS PER ANSI Y14.36

**BLOCK TOLERANCING PER DECIMAL:**  
 .X = ±.030 .XX = ±.010 .XXX = ±.005 .XXXX = ±.0005  
 ANGLE = ±0° 30'

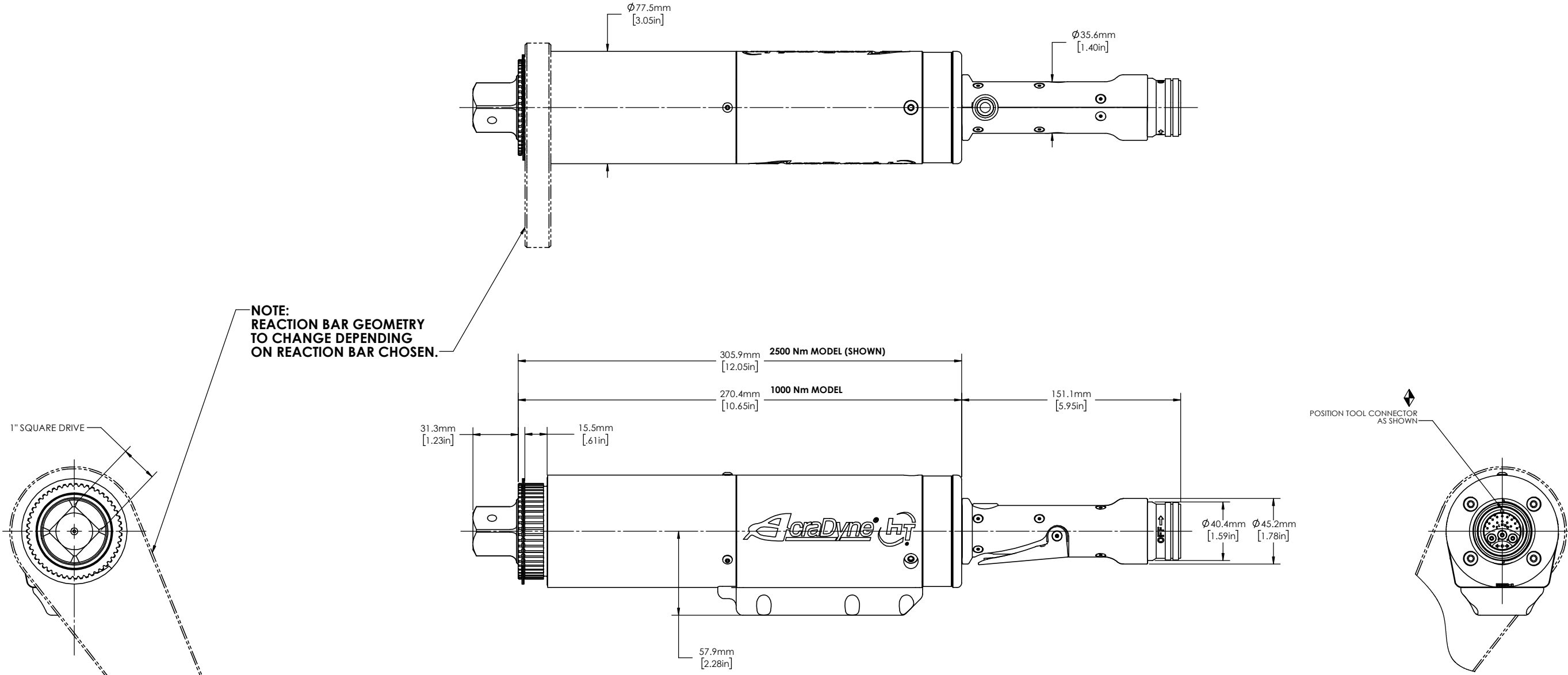
REMOVE BURRS AND SHARP EDGES: R.015 MAX  
 MACHINE SURFACE FINISH: 125 RMS OR BETTER

DRAWINGS AND TECHNICAL DOCUMENTS CONTROLLED BY:  
**ACRADYNE MECHANICAL ENGINEERING**

**INLINE NUTRUNNER**  
 7000 SERIES

SIZE	PART / DRAWING NUMBER	REVISION
<b>D</b>	<b>AES4A77_00B</b>	<b>G</b>

SCALE: 1:2 DO NOT SCALE DRAWING SHEET 1 OF 2



MODEL
AES4A771000B
AES4A772500B



**DOCUMENT CONTROL**  
PRINTED COPIES OF THIS DOCUMENT ARE CONSIDERED TO BE UNCONTROLLED DOCUMENTS. HOLDERS ARE RESPONSIBLE FOR VERIFYING THE CURRENT REVISION LEVEL WITH PURCHASING OR ENGINEERING PRIOR TO USE OR FABRICATION. THE CONTROLLED VERSION OF THIS DOCUMENT IS ELECTRONICALLY MAINTAINED.

**PROPRIETARY AND CONFIDENTIAL**  
THIS DRAWING CONTAINS INFORMATION STRICTLY CONFIDENTIAL TO ACRADYNE/AIMCO. IN THE ABSENCE OF EXPRESSED WRITTEN PERMISSION, ACRADYNE/AIMCO HAS LOANED THIS COPY WITH THE MUTUAL UNDERSTANDING THAT (A) IT WILL NOT BE USED FOR ANY PURPOSE OTHER THAN FOR THAT IN WHICH IT WAS PROVIDED, (B) THE DATA CONTAINED HEREIN WILL NOT BE DISCLOSED TO OTHERS, (C) IT WILL NOT BE REPRODUCED, AND (D) IT WILL BE RETURNED TO ACRADYNE/AIMCO IMMEDIATELY UPON DEMAND.

REVISION LEVEL	REVISION RELEASE DATE	DESCRIPTION OF CHANGES MADE TO PART	ECN #	AUTHOR/ APPROVAL

**UNLESS OTHERWISE SPECIFIED, DIMENSIONS ARE IN INCHES**  
DIMENSIONS AND TOLERANCING PER ANSI Y14.5  
SURFACE ROUGHNESS PER ANSI Y14.36

**BLOCK TOLERANCING PER DECIMAL:**  
.X = ±.030 .XX = ±.010 .XXX = ±.005 .XXXX = ±.0005  
ANGLE = ±0° 30'

REMOVE BURRS AND SHARP EDGES: R.015 MAX  
MACHINE SURFACE FINISH: 125 RMS OR BETTER

DRAWINGS AND TECHNICAL DOCUMENTS CONTROLLED BY:  
**ACRADYNE MECHANICAL ENGINEERING**

<b>INLINE NUTRUNNER 7000 SERIES</b>		
SIZE	PART / DRAWING NUMBER	REVISION
<b>D</b>	<b>AES4A77_00B</b>	<b>G</b>
SCALE: 1:1	DO NOT SCALE DRAWING	SHEET 2 OF 2