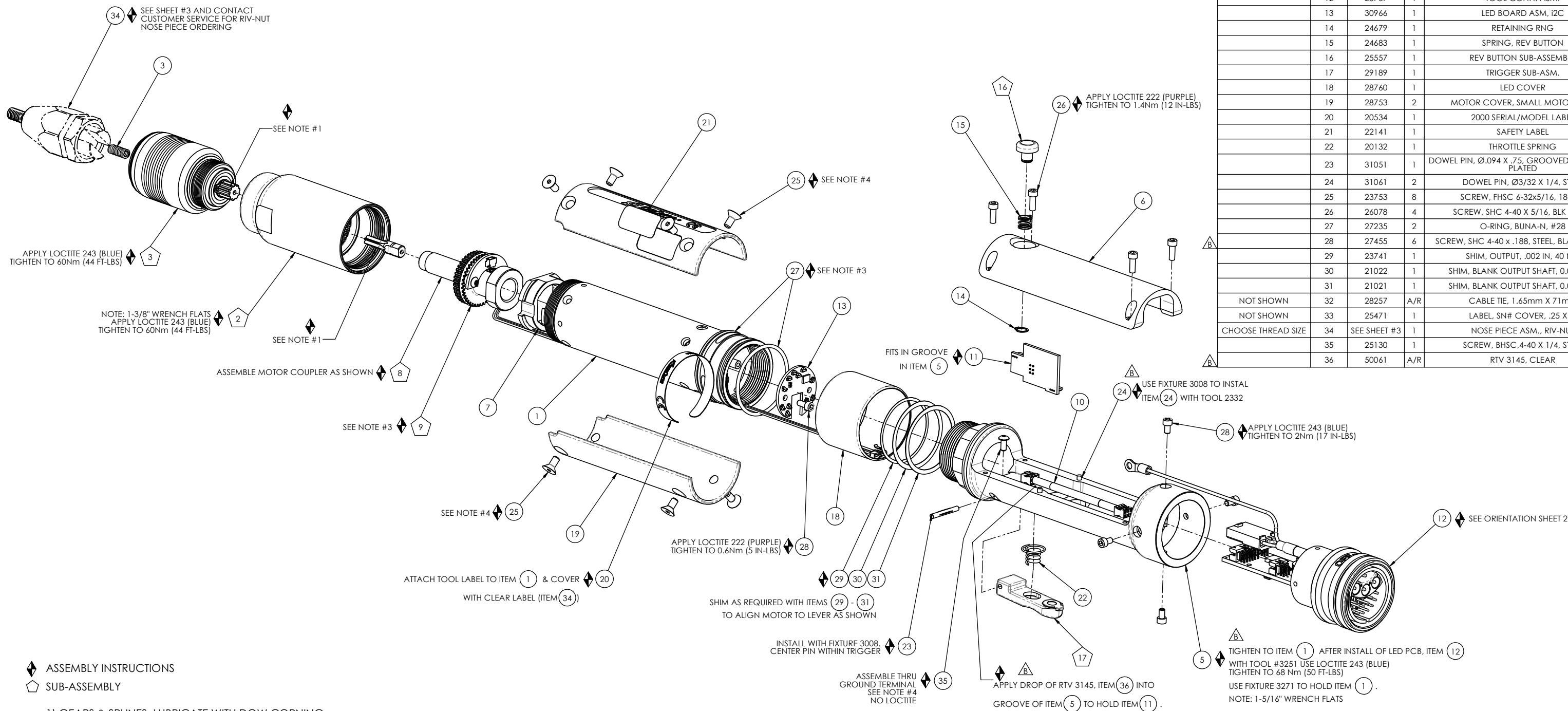


COMMENTS	ITEM NO.	PART NUMBER	QTY.	DESCRIPTION
	1	28766	1	MOTOR ASSEMBLY
	2	SEE CHART	1	GEAR CASE SUB-ASM.
	3	27023	1	SPRING, RIV-NUT SHAFT
	3	27026	1	ADAPTOR ASM., RIV-NUT
	5	28754	1	LEVER HANDLE
	6	29186	1	COVER, LEVER HANDLE
	7	25763	1	TRANSDUCER ADAPTOR
	8	24780	1	MOTOR COUPLER SUB-ASM.
	9	SEE CHART	1	TRANSDUCER SUB-ASM.
	10	29202	1	TRIGGER CABLE ASM., 6 PIN - 6 PIN
	11	29191	1	TRIGGER/MFG BOARD ASM., 2000-SERIES, GEN 4
	12	28767	1	TOOL CONN. ASM.
	13	30966	1	LED BOARD ASM, i2C
	14	24679	1	RETAINING RNG
	15	24683	1	SPRING, REV BUTTON
	16	25557	1	REV BUTTON SUB-ASSEMBLY
	17	29189	1	TRIGGER SUB-ASM.
	18	28760	1	LED COVER
	19	28753	2	MOTOR COVER, SMALL MOTOR O.D.
	20	20534	1	2000 SERIAL/MODEL LABEL
	21	22141	1	SAFETY LABEL
	22	20132	1	THROTTLE SPRING
	23	31051	1	DOWEL PIN, Ø.094 X .75, GROOVED, STEEL, ZINC PLATED
	24	31061	2	DOWEL PIN, Ø3/32 X 1/4, STEEL
	25	23753	8	SCREW, FHSC 6-32x5/16, 18-8 SS
	26	26078	4	SCREW, SHC 4-40 X 5/16, BLK OXIDE
	27	27235	2	O-RING, BUNA-N, #28
	28	27455	6	SCREW, SHC 4-40 x .188, STEEL, BLACK OXIDE
	29	23741	1	SHIM, OUTPUT, .002 IN, 40 NM
	30	21022	1	SHIM, BLANK OUTPUT SHAFT, 0.005 THK
	31	21021	1	SHIM, BLANK OUTPUT SHAFT, 0.010 THK
NOT SHOWN	32	28257	A/R	CABLE TIE, 1.65mm X 71mm
NOT SHOWN	33	25471	1	LABEL, SN# COVER, .25 X 4"
CHOOSE THREAD SIZE	34	SEE SHEET #3	1	NOSE PIECE ASM., RIV-NUT
	35	25130	1	SCREW, BHSC, 4-40 X 1/4, STEEL
	36	50061	A/R	RTV 3145, CLEAR



- 1) GEARS & SPLINES: LUBRICATE WITH DOW CORNING
MOLYKOTE BR2 PLUS GREASE.
- 2) BEARINGS: LUBRICATE WITH
CHEVRON SR1 GREASE
- 3) O-RINGS: LUBRICATE WITH O-RING LUBE
- 4) TIGHTEN TO 1.0 Nm (9 IN-LBS.)
LOCTITE 222 (PURPLE)

DOCUMENT CONTROL
PRINTED COPIES OF THIS DOCUMENT ARE CONSIDERED TO BE UNCONTROLLED DOCUMENTS. HOLDERS ARE RESPONSIBLE FOR VERIFYING THE CURRENT REVISION LEVEL WITH PURCHASING OR ENGINEERING PRIOR TO USE OR FABRICATION. THE CONTROLLED VERSION OF THIS DOCUMENT IS ELECTRONICALLY MAINTAINED.

PROPRIETARY AND CONFIDENTIAL
THIS DRAWING CONTAINS INFORMATION STRICTLY
CONFIDENTIAL TO ACADYNIE/AIMCO. IN THE ABSENCE
OF EXPRESSED WRITTEN PERMISSION, ACADYNIE/AIMCO
HAS GRANTED THIS INFORMATION TO YOU UNDERSTANDING
THAT (A) IT WILL NOT BE USED FOR ANY PURPOSE OTHER
THAN FOR THAT IN WHICH IT WAS PROVIDED, (B) THE DATA
CONTAINED HEREIN WILL NOT BE DISCLOSED TO OTHERS,
(C) IT WILL NOT BE REPRODUCED, AND (D) IT WILL BE RETURNED
TO ACADYNIE/AIMCO IMMEDIATELY UPON DEMAND.

REVISION BLOCK

BLOCK TOLERANCING PER DECIMAL:
X = $\pm .030$ XX = $\pm .010$ XXX = $\pm .005$ XXXX = $\pm .0005$
ANGLE = $\pm 0^{\circ} 30'$

REMOVE BURRS AND SHARP EDGES: R.015 MAX
MACHINE SURFACE FINISH: 125 RMS OR BETTER

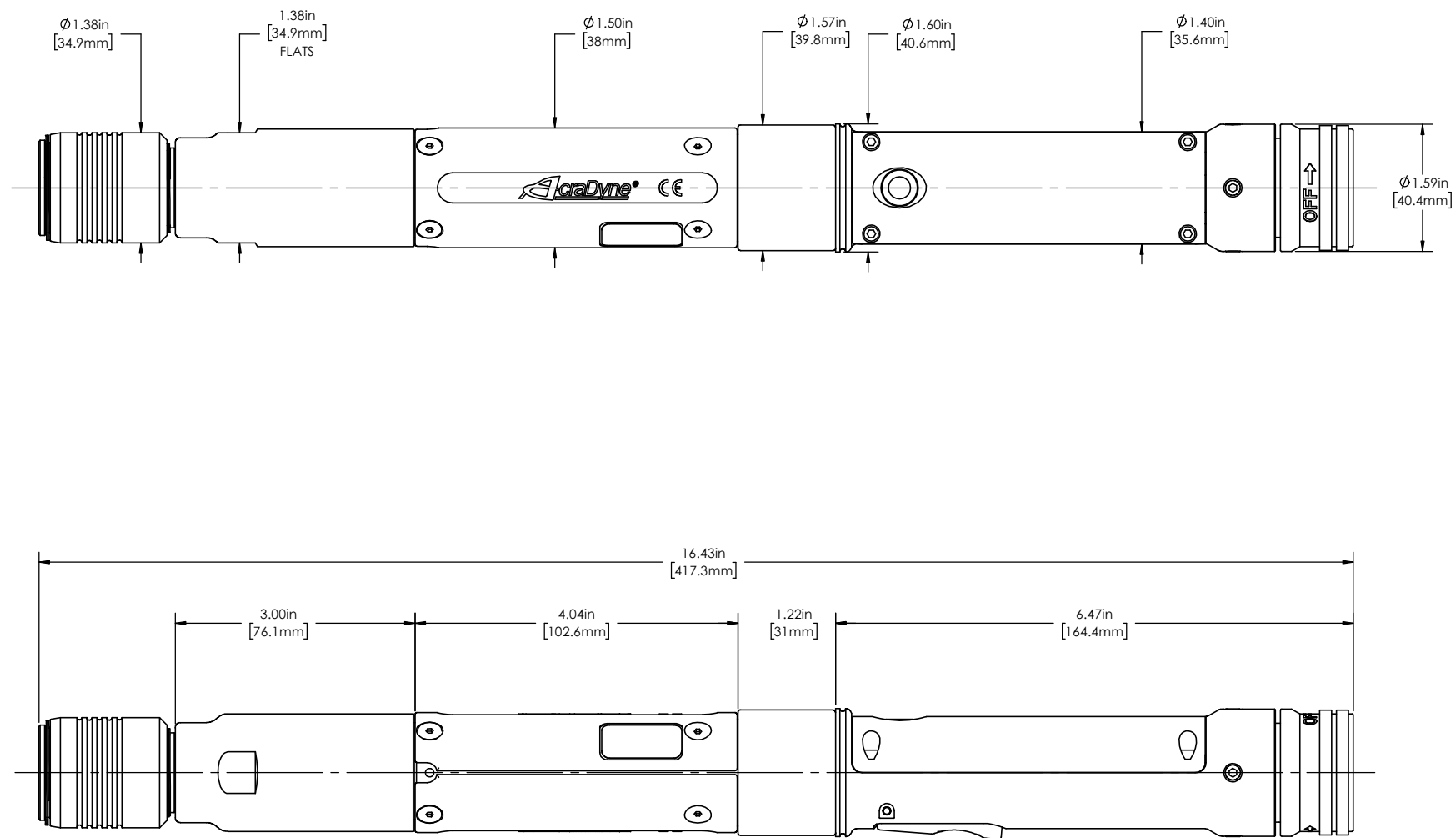
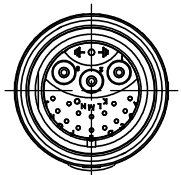
**DRAWINGS AND TECHNICAL DOCUMENTS CONTROLLED BY:
ACRADYNE MECHANICAL ENGINEERING**

INLINE NUTRUNNER

RIV-NUT

GEN 4 2000 SERIES

SIZE D	PART / DRAWING NUMBER AES4A220__CR	REVISION B
SCALE 1:1	DO NOT SCALE DRAWING	SHEET 1 OF 3



DOCUMENT CONTROL
PRINTED COPIES OF THIS DOCUMENT ARE CONSIDERED TO BE UNCONTROLLED DOCUMENTS. HOLDERS ARE RESPONSIBLE FOR VERIFYING THE CURRENT REVISION LEVEL WITH PURCHASING OR ENGINEERING PRIOR TO USE OR FABRICATION. THE CONTROLLED VERSION OF THIS DOCUMENT IS ELECTRONICALLY MAINTAINED.

PROPRIETARY AND CONFIDENTIAL

THIS DRAWING CONTAINS INFORMATION STRICTLY CONFIDENTIAL TO ACADYNE/AIMCO. IN THE ABSENCE OF EXPRESSED WRITTEN PERMISSION, ACADYNE/AIMCO HAS LOANED THIS COPY WITH THE MUTUAL UNDERSTANDING THAT (A) IT WILL NOT BE USED FOR ANY PURPOSE OTHER THAN FOR THAT IN WHICH IT WAS PROVIDED, (B) THE DATA CONTAINED HEREIN WILL NOT BE DISCLOSED TO OTHERS, (C) IT WILL NOT BE REPRODUCED, AND (D) IT WILL BE RETURNED TO ACADYNE/AIMCO IMMEDIATELY UPON DEMAND.

[illegible]

**UNLESS OTHERWISE SPECIFIED,
DIMENSIONS ARE IN INCHES**
DIMENSIONS AND TOLERANCING PER ANSI Y14.5
SURFACE ROUGHNESS PER ANSI Y14.36

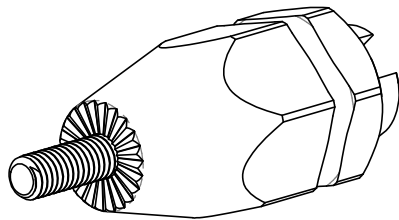
BLOCK TOLERANCING PER DECIMAL:
.X = $\pm .030$.XX = $\pm .010$.XXX = $\pm .005$.XXXX = $\pm .0005$
ANG F = $+0^{\circ}30'$

REMOVE BURRS AND SHARP EDGES: R.015 MAX
MACHINE SURFACE FINISH: 125 RMS OR BETTER

**DRAWINGS AND TECHNICAL DOCUMENTS CONTROLLED BY:
ACRADYNE MECHANICAL ENGINEERING**

INLINE NUTRUNNER RIV-NUT GEN 4 2000 SERIES

SIZE D	PART / DRAWING NUMBER AES4A220__CR	REVISION B
SCALE 1:1	DO NOT SCALE DRAWING	SHEET 2 OF 3



SIZE CODE CHART				
METRIC			INCH	
THREAD SIZE	NOSE PIECE ASM.		THREAD SIZE	NOSE PIECE ASM.
M4 x 0.7mm	27051		8-32 UNC	27055
M5 x 0.8mm	27034		10-24 UNC	27056
M6 x 1.0mm	27052		10-32 UNF	27057
M8 x 1.25mm	27053		1/4-20 UNC	27058
M10 x 1.5mm	27054		5/16-18 UNC	27059
			3/8-16 UNC	27060



DOCUMENT CONTROL

PRINTED COPIES OF THIS DOCUMENT ARE CONSIDERED TO BE UNCONTROLLED DOCUMENTS. HOLDERS ARE RESPONSIBLE FOR VERIFYING THE CURRENT REVISION LEVEL WITH PURCHASING OR ENGINEERING PRIOR TO USE OR FABRICATION. THE CONTROLLED VERSION OF THIS DOCUMENT IS ELECTRONICALLY MAINTAINED.

PROPRIETARY AND CONFIDENTIAL

THIS DRAWING CONTAINS INFORMATION STRICTLY
CONFIDENTIAL TO ACADRYNE/AIMCO. IN THE ABSENCE
OF EXPRESSED WRITTEN PERMISSION, ACADRYNE/AIMCO
HAS LOANED THIS COPY WITH THE MUTUAL UNDERSTANDING
THAT (A) IT WILL NOT BE USED FOR ANY PURPOSE OTHER
THAN THAT FOR WHICH IT WAS PROVIDED, (B) IT WILL
CONTAINED HEREIN WILL NOT BE DISCLOSED TO OTHERS,
(C) IT WILL NOT BE REPRODUCED, AND (D) IT WILL BE RETURNED
TO ACADRYNE/AIMCO IMMEDIATELY UPON DEMAND.

REVISION LEVEL	REVISION RELEASE DATE	DESCRIPTION OF CHANGES MADE TO PART	ECN #	AUTHOR/ APPROVAL
REVISION BLOCK				

**UNLESS OTHERWISE SPECIFIED,
DIMENSIONS ARE IN INCHES**
DIMENSIONS AND TOLERANCING PER ANSI Y14.5
SURFACE ROUGHNESS PER ANSI Y14.36

BLOCK TOLERANCING PER DECIMAL:

.X = $\pm .030$.XX = $\pm .010$.XXX = $\pm .005$.XXXX = $\pm .0005$
ANGLE = $\pm 0^{\circ} 30'$

REMOVE BURRS AND SHARP EDGES: R.015 MAX
MACHINE SURFACE FINISH: 125 RMS OR BETTER

DRAWINGS AND TECHNICAL DOCUMENTS CONTROLLED BY:
ACRADYNE MECHANICAL ENGINEERING

INLINE NUTRUNNER RIV-NUT

GEN 4 2000-SERIES

SIZE	PART / DRAWING NUMBER	REVISION
B	AES4A220__CR	B
SCALE 1:1	DO NOT SCALE DRAWING	SHEET 3 OF 3