

MODEL NUMBER	INLINE HEAD ASM	MOTOR ASM	SUN GEAR
AES32010CQ	26097	25425	21145
AES32020CQ	26099	25425	N/A
AES32025CQ	26099	25426	N/A

COMMENTS	ITEM NO.	PART NUMBER	QTY.	DESCRIPTION
	1	27030	1	HOUSING MOTOR/HANDLE ASSY
	2	SEE CHART	1	MOTOR ASM., 7:1, 2000 SERIES GEN III
	3	25063	1	LED BOARD ASM.
	4	25429	2	STAND-OFF, LED, 2000 SERIES
	5	25075	2	SCREW, SHC 4-40X.375, STEEL, BLACK OXIDE
	6	25993	1	O-RING, RING GEAR TO MOTOR, GEN 3B 2000 SERIES
	7	SEE CHART	1	INLINE HEAD ASM., 1/4" HEX Q.C.
	8	SEE CHART	1	12T SUN GEAR BLANK
	9	24272	2	ADAPTOR INSERT
	10	24324	2	DOWEL PIN 3/32 Dia x 7/8 LONG
	11	25847	1	TID BOARD ASM.
	12	24934	2	SCREW, FHC 4-40 X .312, STEEL, BLACK OXIDE
	13	20132	1	THROTTLE SPRING
	14	26532	1	GEN 3 TRIGGER ASSY, CAST
	15	20061	2	SCREW, LEVER
	16	25072	1	O-RING, LED LIGHT RING COVER
	17	20534	1	3000 SERIAL/MODEL LABEL
	18	25058	1	LIGHT RING COVER, LED
	19	24679	1	RETAINING RNG
	20	24683	1	SPRING, REV BUTTON
	21	24706	1	REV BUTTON SUB-ASSEMBLY
	22	24940	10	SCREW, FHSC 4-40 X .25 LG., STEEL, BLACK OXIDE
	23	22141	1	SAFETY LABEL
	24	20437	1	REACTION BAR
	25	20454	1	NUT, INLINE FIXTURE
	26	25103	1	PIN RETAINER RING
	27	25104	2	RETAINING RING
	28	26084	1	HANDLE COVER, MFB
	29	26083	1	HANDLE COVER
	30	26102	1	TOOL CONNECTOR ASM., LEVER
	31	27027	1	SCREW, SET 5-40X.188,STEEL,BLK OXIDE
	32	25745	5	SCREW, BHSC 4-40 STEEL, BLACK OXIDE

- ◆ ASSEMBLY INSTRUCTIONS
 - ◡ SUB-ASSEMBLY
- 1) GEARS & SPLINES: LUBRICATE WITH DOW CORNING MOLYKOTE BR2 PLUS GREASE.
 - 2) BEARINGS: LUBRICATE WITH CHEVRON SR1 GREASE
 - 3) O-RINGS: LUBRICATE WITH O-RING LUBE
 - 4) TIGHTEN TO 1 NM (9 IN-LBS.) LOCTITE 243 (BLUE)

REQUIRED TOOLING
SNAP RING PLIERS - EXTERNAL TYPE
LOCTITE: 243 BLUE, 638 GREEN
HEX BITS: 1/16, 5/64, 3/32



DOCUMENT CONTROL
 PRINTED COPIES OF THIS DOCUMENT ARE CONSIDERED TO BE UNCONTROLLED DOCUMENTS. HOLDERS ARE RESPONSIBLE FOR VERIFYING THE CURRENT REVISION LEVEL WITH PURCHASING OR ENGINEERING PRIOR TO USE OR FABRICATION. THE CONTROLLED VERSION OF THIS DOCUMENT IS ELECTRONICALLY MAINTAINED.

PROPRIETARY AND CONFIDENTIAL
 THIS DRAWING CONTAINS INFORMATION STRICTLY CONFIDENTIAL TO ACRADYNE/AIMCO. IN THE ABSENCE OF EXPRESSED WRITTEN PERMISSION, ACRADYNE/AIMCO HAS LOANED THIS COPY WITH THE MUTUAL UNDERSTANDING THAT (A) IT WILL NOT BE USED FOR ANY PURPOSE OTHER THAN FOR THAT IN WHICH IT WAS PROVIDED, (B) THE DATA CONTAINED HEREIN WILL NOT BE DISCLOSED TO OTHERS, (C) IT WILL NOT BE REPRODUCED, AND (D) IT WILL BE RETURNED TO ACRADYNE/AIMCO IMMEDIATELY UPON DEMAND.

REVISION LEVEL	REVISION RELEASE DATE	DESCRIPTION OF CHANGES MADE TO PART	ECN #	AUTHOR/ APPROVAL

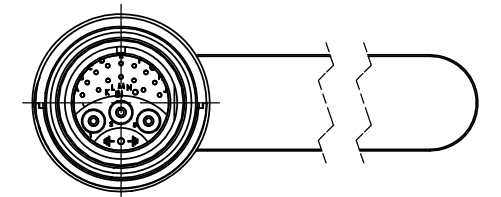
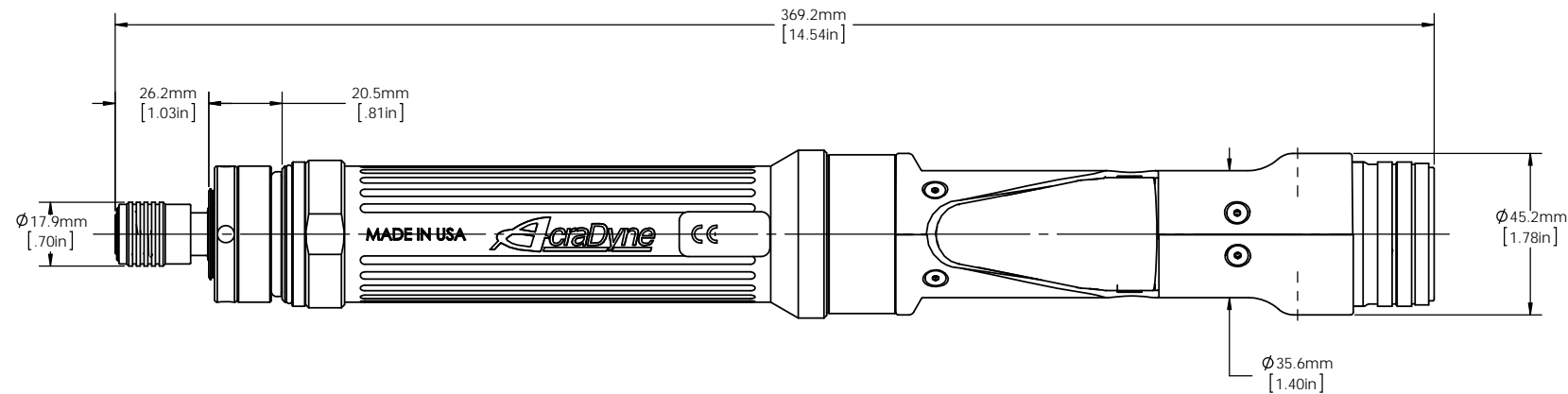
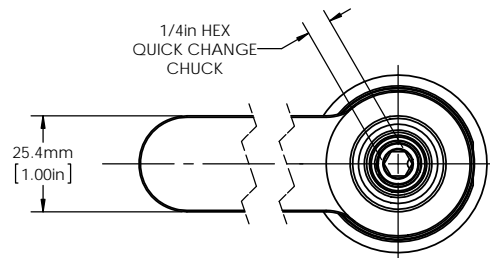
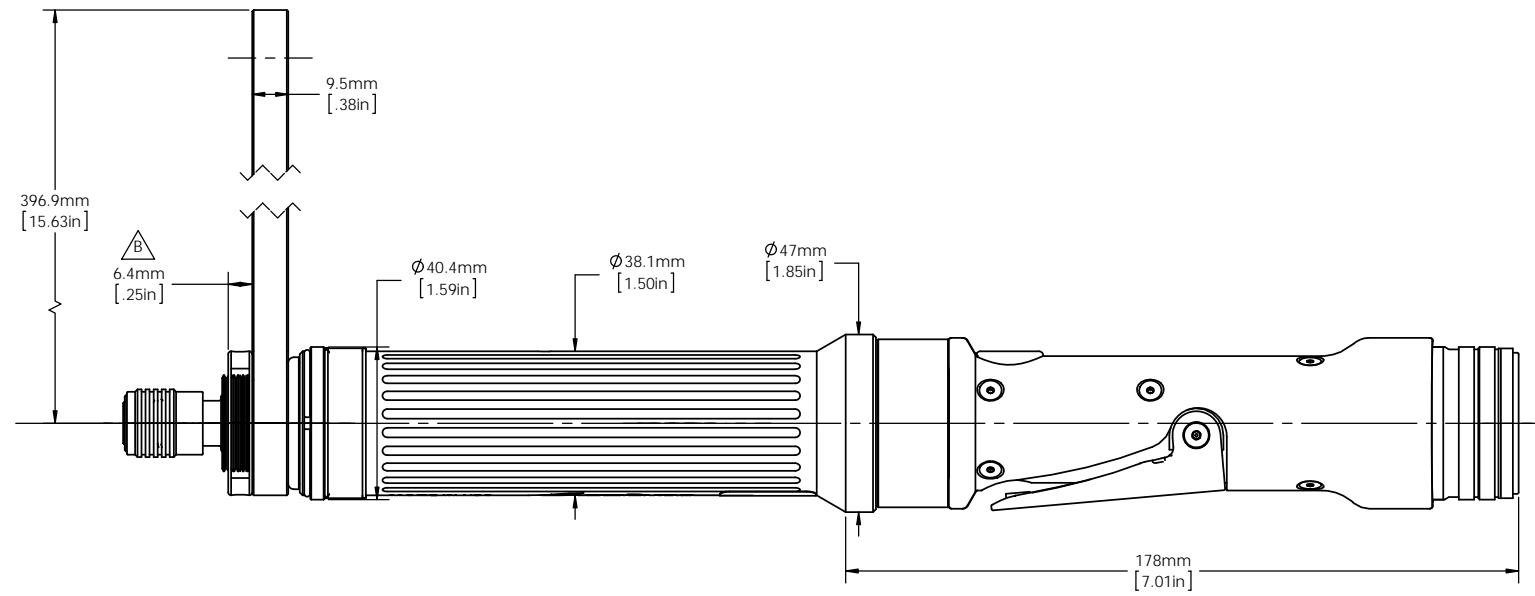
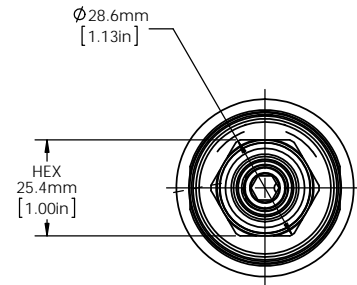
UNLESS OTHERWISE SPECIFIED, DIMENSIONS ARE IN INCHES
 DIMENSIONS AND TOLERANCING PER ANSI Y14.5
 SURFACE ROUGHNESS PER ANSI Y14.36

BLOCK TOLERANCING PER DECIMAL:
 .X = ±.030 .XX = ±.010 .XXX = ±.005 .XXXX = ±.0005
 ANGLE = 30°/30°

REMOVE BURRS AND SHARP EDGES: R.015 MAX
 MACHINE SURFACE FINISH: 125 RMS OR BETTER

DRAWINGS AND TECHNICAL DOCUMENTS CONTROLLED BY:
ACRADYNE MECHANICAL ENGINEERING

AES320_ CQ INLINE NUTRUNNER 2000 SERIES - GEN 3C		
SIZE D	PART / DRAWING NUMBER AES320_ CQ	REVISION B
SCALE 1:1	DO NOT SCALE DRAWING	SHEET 1 OF 2



DOCUMENT CONTROL
 PRINTED COPIES OF THIS DOCUMENT ARE CONSIDERED TO BE UNCONTROLLED DOCUMENTS. HOLDERS ARE RESPONSIBLE FOR VERIFYING THE CURRENT REVISION LEVEL WITH PURCHASING OR ENGINEERING PRIOR TO USE OR FABRICATION. THE CONTROLLED VERSION OF THIS DOCUMENT IS ELECTRONICALLY MAINTAINED.

PROPRIETARY AND CONFIDENTIAL
 THIS DRAWING CONTAINS INFORMATION STRICTLY CONFIDENTIAL TO ACRADYNE/AIMCO. IN THE ABSENCE OF EXPRESSED WRITTEN PERMISSION, ACRADYNE/AIMCO HAS LOANED THIS COPY WITH THE MUTUAL UNDERSTANDING THAT (A) IT WILL NOT BE USED FOR ANY PURPOSE OTHER THAN FOR THAT IN WHICH IT WAS PROVIDED, (B) THE DATA CONTAINED HEREIN WILL NOT BE DISCLOSED TO OTHERS, (C) IT WILL NOT BE REPRODUCED, AND (D) IT WILL BE RETURNED TO ACRADYNE/AIMCO IMMEDIATELY UPON DEMAND.

REVISION LEVEL	REVISION RELEASE DATE	DESCRIPTION OF CHANGES MADE TO PART	ECN #	AUTHOR/ APPROVAL

UNLESS OTHERWISE SPECIFIED, DIMENSIONS ARE IN INCHES
 DIMENSIONS AND TOLERANCING PER ANSI Y14.5
 SURFACE ROUGHNESS PER ANSI Y14.36

BLOCK TOLERANCING PER DECIMAL:
 .X = ±.030 .XX = ±.010 .XXX = ±.005 .XXXX = ±.0005
 ANGLE = ±0° 30'

REMOVE BURRS AND SHARP EDGES: R.015 MAX
 MACHINE SURFACE FINISH: 125 RMS OR BETTER

DRAWINGS AND TECHNICAL DOCUMENTS CONTROLLED BY:
ACRADYNE MECHANICAL ENGINEERING

AES320_ _CQ INLINE NUTRUNNER 2000 SERIES - GEN 3C		
SIZE D	PART / DRAWING NUMBER AES320_ _CQ	REVISION B
SCALE 1:1	DO NOT SCALE DRAWING	SHEET 2 OF 2