

COMMENTS	ITEM NO.	PART NUMBER	QTY.	DESCRIPTION
	1	26160	1	MOTOR ASM.
	2	24840	1	FOIL SEAL 2" DIA
	3	29335	4	STANDOFF, M-F, 4-40 X 3/16, SS
	4	27797	1	TID BOARD, POPULATED W/O AMP CIRCUIT
	5	25490	2	LENS, LED, INJECTION MOLDED
	6	29337	3	STANDOFF, M-F, 4-40 X 1/8, SS
	7	29338	1	TID WIRE INSULATOR
	8	25573	7	SCREW PHP 4-40 X 3/16 18-8 SS
	9	25230	1	END CAP
	10	25568	4	SHC 10-32 x 1.25 BLK OXIDE
	11	SEE CHART	1	GEAR BOX ASM.
	12	27978	1	SLIP RING INNER PLATE
	13	28278	1	SLIP RING OUTER PLATE SUB-ASM.
	14	27714	2	O-RING 3" ID
SEE WORK INSTRUCTIONS	15	SEE CHART	1	SLIP RING SET
	16	27994	6	DOWEL PIN, Ø.0938 X .1875 LG., STEEL
	17	27993	6	SCREW, FHPM, 2-56, 18-BSS, PLAIN
	18	27953	1	O-RING, 70 DURO BUNA N, -042
	19	28174	8	SPRING, COMPRESSION
	20	20105	8	DETENT BALL
	21	25745	2	SCREW, BHSC 4-40 STEEL, BLACK OXIDE
	22	28000	1	CABLE TIE-MOUNT
	23	28257	4	CABLE TIE, 1.65MM W X 71MM LG
	24	24940	1	SCREW, FHSC 4-40 X .25 LG., STEEL, BLACK OXIDE
	25	25969	2	BEARING, BALL, Ø42mm X Ø30mm X 7mm
	26	25961	1	BEARING RETAINER, INNER
	27	25962	1	BEARING RETAINER, OUTER
	28	27980	1	SLIP RING PINION ADAPTER
	29	26080	1	O-RING, LED LIGHT RING COVER
	30	25233	1	TRAY, WIRE, HT TOOLS PISTOL
	31	29279	10	SCREW, BHSC, 10-32 X 3/8, TORX HEAD, NYLON PELL-IT, STEEL
	32	29284	2	SCREW, BHSC, 10-32 X 1/2, TORX HEAD, NYLON PELL-IT, STEEL
	33	27999	1	SLIP RING TRANSDUCER CABLE CHASE
	34	25234	1	HANDLE, HT TOOLS PISTOL
	35	25212	1	SWITCH SUB-ASSEMBLY
NOT SHOWN	36	25582	1	TRIGGER CABLE
	37	25505	1	TOOL CONNECTOR ASM HERC PISTOL
	38	25569	6	SCREW LHCS 10-32 X 3/8 18-8 SS
	39	25570	2	SCREW SHCS 4-40 X 1/4 18-8 SS
	40	25564	2	WASHER SHIM .093THK .25ID .375OD
	41	28204	1	RING GEAR COVER, 8100Nm
	42	26636	1	GEAR CASE COVER
	43	26319	3	SCREW, BHSC 6-32 X .188, 18-8 SS
	44	26899	1	CHOOSE REACTION BAR
	45	26436	1	RETAINING RING, SPIRAL, Ø3.833 X Ø3.293 X .111
	46	25579	1	PLUG 3/8"
	47	31412	1	GROUND WIRE ASSEMBLY, 18 AWG, 8000 & 9000 HT SERIES
NOT SHOWN	48	24177	A/R	RTV 108, TRANSLUCENT

INSTALL SHIMS P/N 25271, 25272, & 25273 AS REQUIRED

NOTE: SEE WORK INSTRUCTION DOCUMENT "W2047" FOR COMPLETE ASSEMBLY INSTRUCTIONS.

MODEL NO.	GEARBOX ASM.	SLIP RING SET
AEP4B896500B	28114	27983.005
AEP4W896500B	28115	27983.005
AEP4B898100B	28115	27983.006

- ◆ ASSEMBLY INSTRUCTIONS
- ◡ SUB-ASSEMBLY
- 1) GEARS & SPLINES: LUBRICATE WITH DOW CORNING MOLYKOTE BR2 PLUS GREASE.
- 2) BEARINGS: LUBRICATE WITH CHEVRON SR1 GREASE
- 3) O-RINGS: LUBRICATE WITH O-RING LUBE



DOCUMENT CONTROL
 PRINTED COPIES OF THIS DOCUMENT ARE CONSIDERED TO BE UNCONTROLLED DOCUMENTS. HOLDERS ARE RESPONSIBLE FOR VERIFYING THE CURRENT REVISION LEVEL WITH PURCHASING OR ENGINEERING PRIOR TO USE OR FABRICATION. THE CONTROLLED VERSION OF THIS DOCUMENT IS ELECTRONICALLY MAINTAINED.

PROPRIETARY AND CONFIDENTIAL
 THIS DRAWING CONTAINS INFORMATION STRICTLY CONFIDENTIAL TO ACRADYNE/AIMCO. IN THE ABSENCE OF EXPRESSED WRITTEN PERMISSION, ACRADYNE/AIMCO HAS LOANED THIS COPY WITH THE MUTUAL UNDERSTANDING THAT (A) IT WILL NOT BE USED FOR ANY PURPOSE OTHER THAN FOR THAT IN WHICH IT WAS PROVIDED, (B) THE DATA CONTAINED HEREIN WILL NOT BE DISCLOSED TO OTHERS, (C) IT WILL NOT BE REPRODUCED, AND (D) IT WILL BE RETURNED TO ACRADYNE/AIMCO IMMEDIATELY UPON DEMAND.

REVISION LEVEL	REVISION RELEASE DATE	DESCRIPTION OF CHANGES MADE TO PART	ECN #	AUTHOR/ APPROVAL
REVISION BLOCK				

UNLESS OTHERWISE SPECIFIED, DIMENSIONS ARE IN INCHES
 DIMENSIONS AND TOLERANCING PER ANSI Y14.5 SURFACE ROUGHNESS PER ANSI Y14.36

BLOCK TOLERANCING PER DECIMAL:
 X = ±.030 XX = ±.010 XXX = ±.005 XXXX = ±.0005 ANGLE = 40°

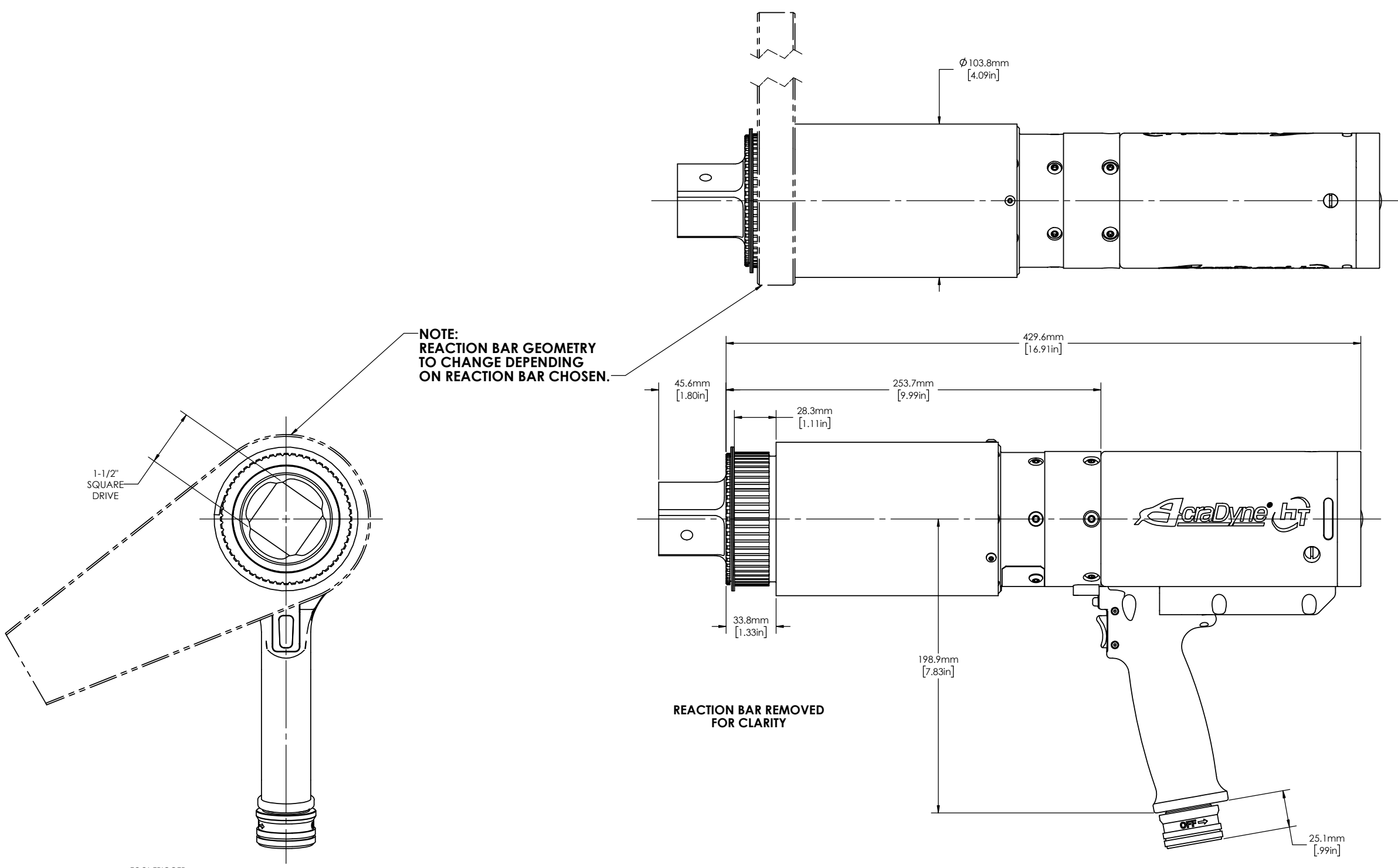
REMOVE BURRS AND SHARP EDGES: R.015 MAX MACHINE SURFACE FINISH: 125 RMS OR BETTER

DRAWINGS AND TECHNICAL DOCUMENTS CONTROLLED BY:
ACRADYNE MECHANICAL ENGINEERING

PISTOL NUTRUNNER W/SLIP RING CLUTCH
8000 SERIES

SIZE	PART / DRAWING NUMBER	REVISION
D	AEP4 89 B	E

SCALE: 2:3 DO NOT SCALE DRAWING SHEET 1 OF 2



NOTE:
REACTION BAR GEOMETRY
TO CHANGE DEPENDING
ON REACTION BAR CHOSEN.

1-1/2"
SQUARE
DRIVE

REACTION BAR REMOVED
FOR CLARITY

TOOL TRIGGER

POSITION TOOL CONNECTOR
KEYWAY ALIGNED WITH
TOOL TRIGGER AS SHOWN

MODEL NO.
AEP4B896500B
AEP4W896500B
AEP4B898100B



DOCUMENT CONTROL
PRINTED COPIES OF THIS DOCUMENT ARE CONSIDERED TO BE UNCONTROLLED DOCUMENTS. HOLDERS ARE RESPONSIBLE FOR VERIFYING THE CURRENT REVISION LEVEL WITH PURCHASING OR ENGINEERING PRIOR TO USE OR FABRICATION. THE CONTROLLED VERSION OF THIS DOCUMENT IS ELECTRONICALLY MAINTAINED.

PROPRIETARY AND CONFIDENTIAL
THIS DRAWING CONTAINS INFORMATION STRICTLY CONFIDENTIAL TO ACRADYNE/AIMCO. IN THE ABSENCE OF EXPRESSED WRITTEN PERMISSION, ACRADYNE/AIMCO HAS LOANED THIS COPY WITH THE MUTUAL UNDERSTANDING THAT (A) IT WILL NOT BE USED FOR ANY PURPOSE OTHER THAN FOR THAT IN WHICH IT WAS PROVIDED, (B) THE DATA CONTAINED HEREIN WILL NOT BE DISCLOSED TO OTHERS, (C) IT WILL NOT BE REPRODUCED, AND (D) IT WILL BE RETURNED TO ACRADYNE/AIMCO IMMEDIATELY UPON DEMAND.

REVISION LEVEL	REVISION RELEASE DATE	DESCRIPTION OF CHANGES MADE TO PART	ECN #	AUTHOR/ APPROVAL

UNLESS OTHERWISE SPECIFIED, DIMENSIONS ARE IN INCHES
DIMENSIONS AND TOLERANCING PER ANSI Y14.5
SURFACE ROUGHNESS PER ANSI Y14.36

BLOCK TOLERANCING PER DECIMAL:
.X = ±.030 .XX = ±.010 .XXX = ±.005 .XXXX = ±.0005
ANGLE = ±0°30'

REMOVE BURRS AND SHARP EDGES: R.015 MAX
MACHINE SURFACE FINISH: 125 RMS OR BETTER

DRAWINGS AND TECHNICAL DOCUMENTS CONTROLLED BY:
ACRADYNE MECHANICAL ENGINEERING

PISTOL NUTRUNNER W/SLIP RING CLUTCH 8000 SERIES		
SIZE D	PART / DRAWING NUMBER AEP4 89 B	REVISION E
SCALE 1:8	DO NOT SCALE DRAWING	SHEET 2 OF 2