

COMMENTS	ITEM NO.	PART NUMBER	QTY.	DESCRIPTION
	1	32429	1	MOTOR ASM. W/LED LENSES & FOIL SEAL
	2	29335	4	STANDOFF, M-F,4-40 X 3/16, SS
	3	27797	1	TID BOARD, POPULATED W/O AMP CIRCUIT
	4	29337	3	STANDOFF, M-F,4-40 X 1/8, SS
	5	29338	1	TID WIRE INSULATOR
	6	25573	7	SCREW PHP 4-40 X 3/16 18-8 SS
	7	25230	1	END CAP, PISTOL TOOLS
	8	SEE CHART	1	GEARBOX AND CLUTCH ASM.
	9	25568	4	SHC 10-32 x 1.25 BLK OXIDE
	10	27980	1	SLIP RING PINION ADAPTER
	11	26080	1	O-RING, LED LIGHT RING COVER
	12	25233	1	TRAY, WIRE, HT TOOLS PISTOL
	13	27999	1	SLIP RING TRANSDUCER CABLE CHASE
	14	25234	1	HANDLE, HT TOOLS PISTOL
	15	25212	1	SWITCH SUB-ASSEMBLY
NOT SHOWN	16	25582	1	TRIGGER CABLE
	17	25505	1	TOOL CONNECTOR ASM HERC PISTOL
	18	25569	6	SCREW LHCS 10-32 X 3/8 18-8 SS
	19	25570	2	SCREW SHCS 4-40 X 1/4 18-8 SS
	20	29279	6	SCREW, BHSC, 10-32 x 3/8, TORX HEAD, NYLON PELL-IT, STEEL
	21	26898	1	CHOOSE REACTION BAR
	22	25579	1	PLUG 3/8"
	23	31412	1	GROUND WIRE ASSEMBLY, 18 AWG, 8000 & 9000 HT SERIES
NOT SHOWN	24	28257	A/R	CABLE TIE, 1.65MM W X 71MM LG
	25	25271	A/R	SHIM. - .002
	26	25272	A/R	SHIM. - .005
	27	25273	A/R	SHIM. - .010
NOT SHOWN	28	24177	A/R	RTV 108, TRANSLUCENT

NOTE:
SEE WORK INSTRUCTION DOCUMENT "W2047"
FOR COMPLETE ASSEMBLY INSTRUCTIONS.

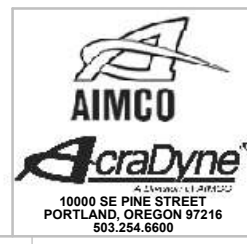
MODEL NO.	GEARBOX/CLUTCH ASM.
AEP4B884200B1	31854.001
AEP4B884200B	31855.001
AEP4B885000B1	31854.002
AEP4B885000B	31855.002
AEP4W885000B1	32389
AEP4W885000B	32401

DETAIL B
SCALE 1 : 1

GROUND WIRE ATTACHMENT DETAILS

- ◆ ASSEMBLY INSTRUCTIONS
- ◊ SUB-ASSEMBLY

- 1) GEARS & SPLINES: LUBRICATE WITH DOW CORNING MOLYKOTE BR2 PLUS GREASE.
- 2) BEARINGS: LUBRICATE WITH CHEVRON SR1 GREASE
- 3) O-RINGS: LUBRICATE WITH O-RING LUBE



DOCUMENT CONTROL
PRINTED COPIES OF THIS DOCUMENT ARE CONSIDERED TO BE UNCONTROLLED DOCUMENTS. HOLDERS ARE RESPONSIBLE FOR VERIFYING THE CURRENT REVISION LEVEL WITH PURCHASING OR ENGINEERING PRIOR TO USE OR FABRICATION. THE CONTROLLED VERSION OF THIS DOCUMENT IS ELECTRONICALLY MAINTAINED.

PROPRIETARY AND CONFIDENTIAL
THIS DRAWING CONTAINS INFORMATION STRICTLY CONFIDENTIAL TO ACRADYNE/AIMCO. IN THE ABSENCE OF EXPRESSED WRITTEN PERMISSION, ACRADYNE/AIMCO HAS LOANED THIS COPY WITH THE MUTUAL UNDERSTANDING THAT (A) IT WILL NOT BE USED FOR ANY PURPOSE OTHER THAN FOR THAT IN WHICH IT WAS PROVIDED, (B) THE DATA CONTAINED HEREIN WILL NOT BE DISCLOSED TO OTHERS, (C) IT WILL NOT BE REPRODUCED, AND (D) IT WILL BE RETURNED TO ACRADYNE/AIMCO IMMEDIATELY UPON DEMAND.

REVISION LEVEL	REVISION RELEASE DATE	DESCRIPTION OF CHANGES MADE TO PART	ECN #	AUTHOR/ APPROVAL

UNLESS OTHERWISE SPECIFIED, DIMENSIONS ARE IN INCHES
DIMENSIONS AND TOLERANCING PER ANSI Y14.5 SURFACE ROUGHNESS PER ANSI Y14.36

BLOCK TOLERANCING PER DECIMAL:
X = ±.030 XX = ±.010 XXX = ±.005 XXXX = ±.0005
ANGLE = ±0° 30'

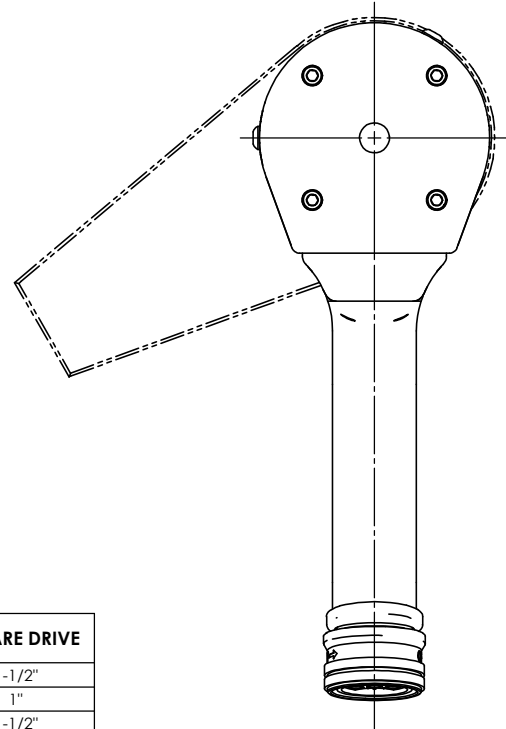
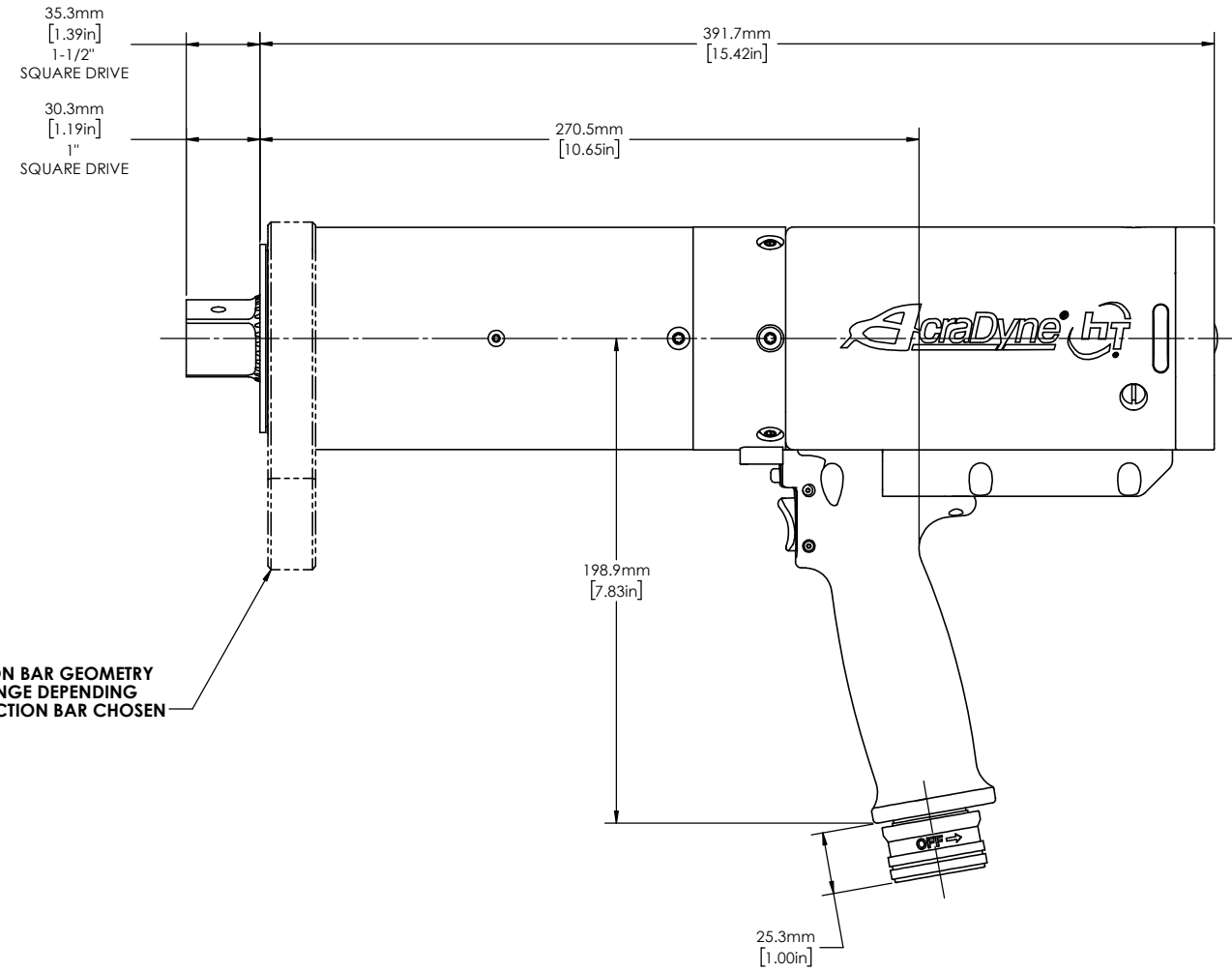
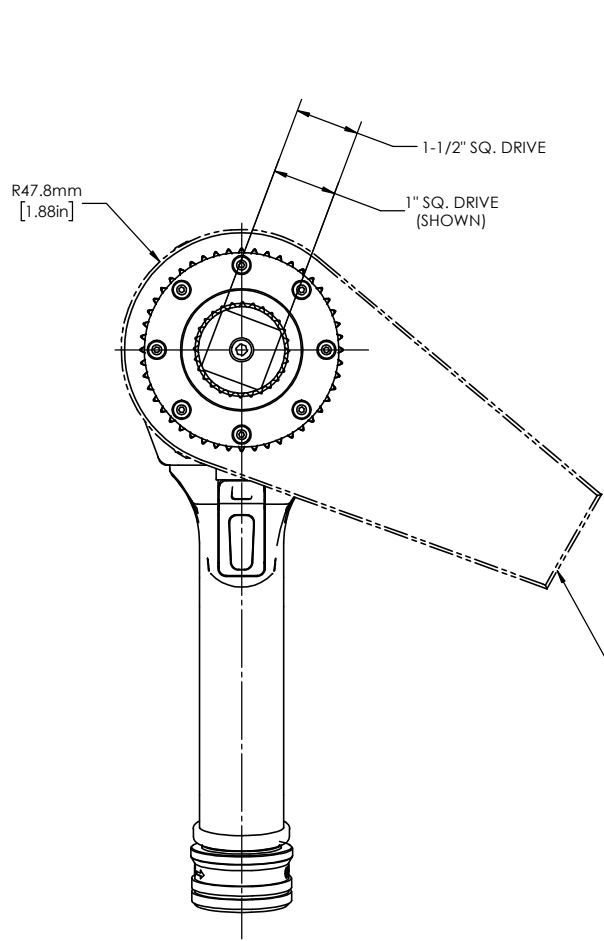
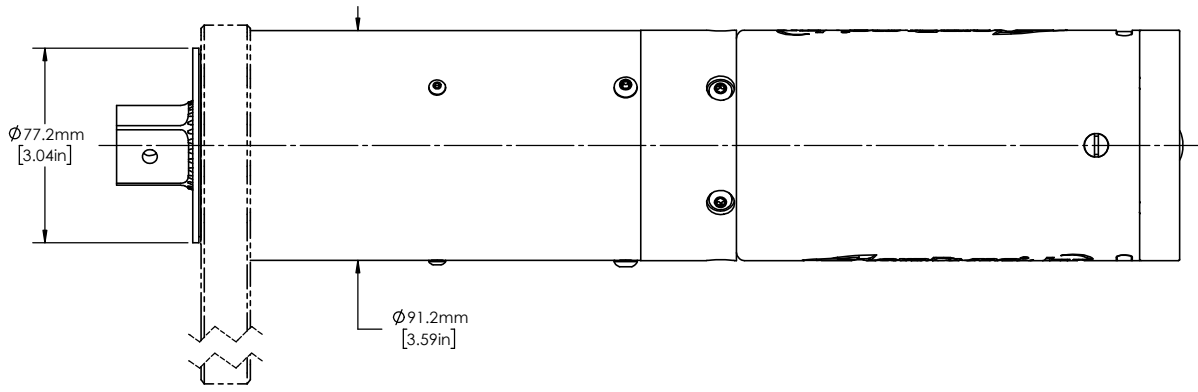
REMOVE BURRS AND SHARP EDGES: R.015 MAX MACHINE SURFACE FINISH: 125 RMS OR BETTER

DRAWINGS AND TECHNICAL DOCUMENTS CONTROLLED BY:
ACRADYNE MECHANICAL ENGINEERING

PISTOL NUTRUNNER W/SLIP RING CLUTCH 8000 SERIES

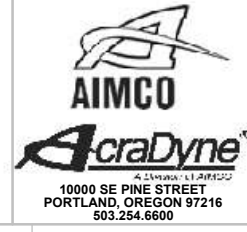
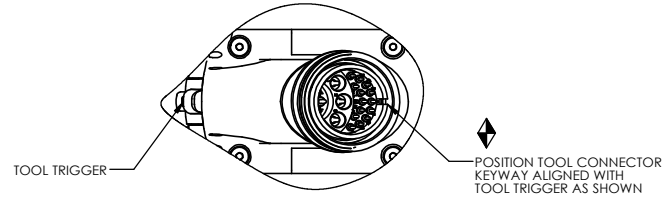
SIZE	PART / DRAWING NUMBER	REVISION
D	AEP4 88	B E

SCALE: 2:3 DO NOT SCALE DRAWING SHEET 1 OF 2



NOTE: REACTION BAR GEOMETRY TO CHANGE DEPENDING ON REACTION BAR CHOSEN

MODEL NO.	SQUARE DRIVE
AEP4B884200B	1-1/2"
AEP4B884200B1	1"
AEP4B885000B	1-1/2"
AEP4B885000B1	1"
AEP4W885000B	1-1/2"
AEP4W885000B1	1"



DOCUMENT CONTROL
 PRINTED COPIES OF THIS DOCUMENT ARE CONSIDERED TO BE UNCONTROLLED DOCUMENTS. HOLDERS ARE RESPONSIBLE FOR VERIFYING THE CURRENT REVISION LEVEL WITH PURCHASING OR ENGINEERING PRIOR TO USE OR FABRICATION. THE CONTROLLED VERSION OF THIS DOCUMENT IS ELECTRONICALLY MAINTAINED.

PROPRIETARY AND CONFIDENTIAL
 THIS DRAWING CONTAINS INFORMATION STRICTLY CONFIDENTIAL TO ACRADYNE/AIMCO. IN THE ABSENCE OF EXPRESSED WRITTEN PERMISSION, ACRADYNE/AIMCO HAS LOANED THIS COPY WITH THE MUTUAL UNDERSTANDING THAT (A) IT WILL NOT BE USED FOR ANY PURPOSE OTHER THAN FOR THAT IN WHICH IT WAS PROVIDED, (B) THE DATA CONTAINED HEREIN WILL NOT BE DISCLOSED TO OTHERS, (C) IT WILL NOT BE REPRODUCED, AND (D) IT WILL BE RETURNED TO ACRADYNE/AIMCO IMMEDIATELY UPON DEMAND.

REVISION LEVEL	REVISION RELEASE DATE	DESCRIPTION OF CHANGES MADE TO PART	ECN #	AUTHOR/ APPROVAL

UNLESS OTHERWISE SPECIFIED, DIMENSIONS ARE IN INCHES
 DIMENSIONS AND TOLERANCING PER ANSI Y14.5
 SURFACE ROUGHNESS PER ANSI Y14.36

BLOCK TOLERANCING PER DECIMAL:
 .X = ±.030 .XX = ±.010 .XXX = ±.005 .XXXX = ±.0005
 ANGLE = ±0° 30'

REMOVE BURRS AND SHARP EDGES: R.015 MAX
 MACHINE SURFACE FINISH: 125 RMS OR BETTER

DRAWINGS AND TECHNICAL DOCUMENTS CONTROLLED BY:
ACRADYNE MECHANICAL ENGINEERING

PISTOL NUTRUNNER W/SLIP RING CLUTCH 8000 SERIES

SIZE	PART / DRAWING NUMBER	REVISION
D	AEP4 88 B	E
SCALE: 1:8	DO NOT SCALE DRAWING	SHEET 2 OF 2