

GROUND WIRE ATTACHMENT DETAILS

END CAP REMOVED FOR CLARITY

MODEL NO.	GEAR BOX ASM.
AEP4A66250BR	28658
AEP4A66425BR	28798
AEP4A66625BR	28108
AEP4A66925BR	28109

COMMENTS	ITEM NO.	PART NUMBER	QTY.	DESCRIPTION
	1	26481	1	MOTOR ASM.
	2	25574	4	STANDOFF M-F, 4-40x1/4, 3/16 HEX, SS
	3	27727	1	TID BOARD, POPULATED W/AMP
	4	29337	3	STANDOFF, M-F, 4-40 X 1/8, SS
	5	29336	1	TID BOARD WIRE INSULATOR
	6	25573	8	SCREW PHP 4-40 X 3/16 18-8 SS
	7	26487	1	O-RING, LED COVER
	8	26488	1	O-RING, MOTOR HOUSING
	9	26299	1	O-RING, PINION
	10	SEE CHART	1	GEAR BOX ASM.
	11	29285	6	SCREW, BHSC, 8-32 x .38, TORX HEAD, NYLON PELL-IT, BLK OXIDE
	12	26275	1	HANDLE, PISTOL
	13	26206	6	SCREW, BHSC 10-32 X .375, STEEL
	14	25745	6	SCREW, BHSC 4-40 STEEL, BLACK OXIDE
	15	26289	1	SWITCH SUB-ASSEMBLY
NOT SHOWN	16	26526	1	TRIGGER CABLE ASM.
NOT SHOWN	17	27464	A/R	TWISTED WAXED LINEN TWINE
	18	28211	1	(4) LINE MALE/FEMALE JUMPER ASM.
	19	26224	1	TRAY, WIRE, PISTOL
	20	20534	1	SERIAL/MODEL LABEL
	21	26483	1	LED COVER
	22	26462	1	END CAP, "J" HANDLE
	23	26280	1	TOOL CONNECTOR ASM., "J" HANDLE
	24	26495	1	GEAR CASE COVER
	25	26319	3	SCREW, BHSC 6-32 X .188, 18-8 SS
	26	26896	1	CHOOSE REACTION BAR
	27	26514	1	RETAINING RING, SPIRAL, Ø2.441 X Ø2.105 X .078
	28	27401	4	SCREW, BHSC 10-32 X 1.25, STEEL, BLK OXIDE
	29	26239	1	"J" HANDLE PLUG
	30	31410	1	GROUND WIRE ASSEMBLY, 18 AWG, 6000 & 7000 HT SERIES

- ◆ ASSEMBLY INSTRUCTIONS
- ◻ SUB-ASSEMBLY

- 1) GEARS & SPLINES: LUBRICATE WITH DOW CORNING MOLYKOTE BR2 PLUS GREASE.
- 2) BEARINGS: LUBRICATE WITH CHEVRON SR1 GREASE
- 3) O-RINGS: LUBRICATE WITH O-RING LUBE

10000 SE PINE STREET
 PORTLAND, OREGON 97216
 503.254.6600

DOCUMENT CONTROL
 PRINTED COPIES OF THIS DOCUMENT ARE CONSIDERED TO BE UNCONTROLLED DOCUMENTS. HOLDERS ARE RESPONSIBLE FOR VERIFYING THE CURRENT REVISION LEVEL WITH PURCHASING OR ENGINEERING PRIOR TO USE OR FABRICATION. THE CONTROLLED VERSION OF THIS DOCUMENT IS ELECTRONICALLY MAINTAINED.

PROPRIETARY AND CONFIDENTIAL
 THIS DRAWING CONTAINS INFORMATION STRICTLY CONFIDENTIAL TO ACRADYNE/AMCO. IN THE ABSENCE OF EXPRESSED WRITTEN PERMISSION, ACRADYNE/AMCO HAS LOANED THIS COPY WITH THE MUTUAL UNDERSTANDING THAT (A) IT WILL NOT BE USED FOR ANY PURPOSE OTHER THAN FOR THAT IN WHICH IT WAS PROVIDED, (B) THE DATA CONTAINED HEREIN WILL NOT BE DISCLOSED TO OTHERS, (C) IT WILL NOT BE REPRODUCED, AND (D) IT WILL BE RETURNED TO ACRADYNE/AMCO IMMEDIATELY UPON DEMAND.

REVISION LEVEL	REVISION RELEASE DATE	DESCRIPTION OF CHANGES MADE TO PART	ECN #	AUTHOR/ APPROVAL

UNLESS OTHERWISE SPECIFIED, DIMENSIONS ARE IN INCHES
 DIMENSIONS AND TOLERANCING PER ANSI Y14.5 SURFACE ROUGHNESS PER ANSI Y14.36

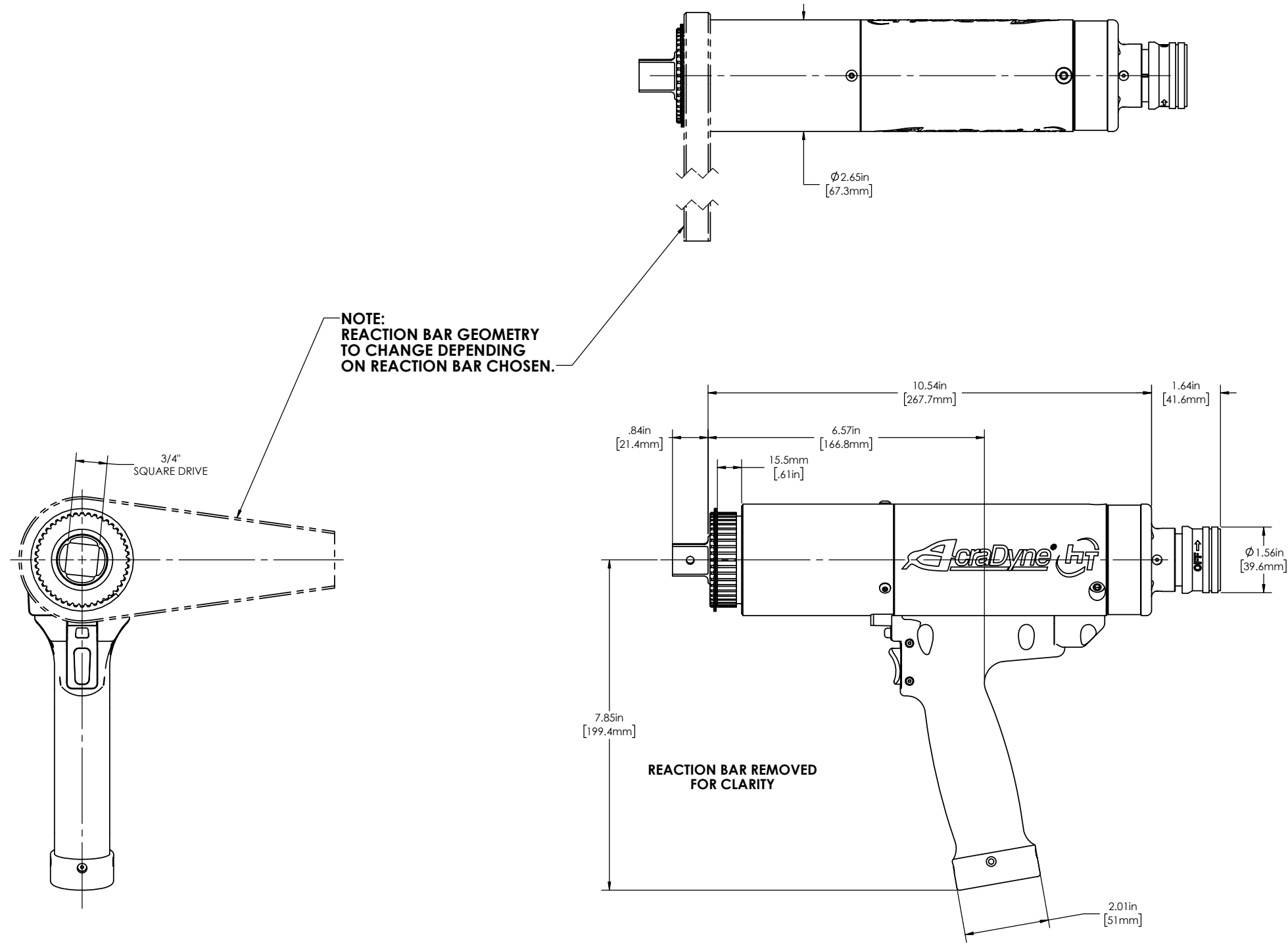
BLOCK TOLERANCING PER DECIMAL:
 .X = ±.030 .XX = ±.010 .XXX = ±.005 .XXXX = ±.0005
 ANGLE = ±0°30'

REMOVE BURRS AND SHARP EDGES: R.015 MAX MACHINE SURFACE FINISH: 125 RMS OR BETTER

DRAWINGS AND TECHNICAL DOCUMENTS CONTROLLED BY:
ACRADYNE MECHANICAL ENGINEERING

PISTOL NUTRUNNER REAR EXIT 6000 SERIES

SIZE	PART / DRAWING NUMBER	REVISION
D	AEP4A66 BR	B
SCALE 3:4	DO NOT SCALE DRAWING	SHEET 1 OF 2



NOTE:
REACTION BAR GEOMETRY
TO CHANGE DEPENDING
ON REACTION BAR CHOSEN.

REACTION BAR REMOVED
FOR CLARITY

POSITION TOOL CONNECTOR
KEYWAY ALIGNED WITH
TOOL TRIGGER AS SHOWN

MODEL NO.
AEP4A66250BR
AEP4A66425BR
AEP4A66625BR
AEP4A66925BR



DOCUMENT CONTROL
PRINTED COPIES OF THIS DOCUMENT ARE CONSIDERED TO BE UNCONTROLLED DOCUMENTS. HOLDERS ARE RESPONSIBLE FOR VERIFYING THE CURRENT REVISION LEVEL WITH PURCHASING OR ENGINEERING PRIOR TO USE OR FABRICATION. THE CONTROLLED VERSION OF THIS DOCUMENT IS ELECTRONICALLY MAINTAINED.

PROPRIETARY AND CONFIDENTIAL
THIS DRAWING CONTAINS INFORMATION STRICTLY CONFIDENTIAL TO ACRADYNE/AIMCO. IN THE ABSENCE OF EXPRESSED WRITTEN PERMISSION, ACRADYNE/AIMCO HAS LOANED THIS COPY WITH THE MUTUAL UNDERSTANDING THAT (A) IT WILL NOT BE USED FOR ANY PURPOSE OTHER THAN FOR THAT IN WHICH IT WAS PROVIDED, (B) THE DATA CONTAINED HEREIN WILL NOT BE DISCLOSED TO OTHERS, (C) IT WILL NOT BE REPRODUCED, AND (D) IT WILL BE RETURNED TO ACRADYNE/AIMCO IMMEDIATELY UPON DEMAND.

REVISION LEVEL	REVISION RELEASE DATE	DESCRIPTION OF CHANGES MADE TO PART	ECN #	AUTHOR/ APPROVAL

UNLESS OTHERWISE SPECIFIED, DIMENSIONS ARE IN INCHES
DIMENSIONS AND TOLERANCING PER ANSI Y14.5
SURFACE ROUGHNESS PER ANSI Y14.36

BLOCK TOLERANCING PER DECIMAL:
.X = ±.030 .XX = ±.010 .XXX = ±.005 .XXXX = ±.0005
ANGLE = ±0° 30'

REMOVE BURRS AND SHARP EDGES: R.015 MAX
MACHINE SURFACE FINISH: 125 RMS OR BETTER

DRAWINGS AND TECHNICAL DOCUMENTS CONTROLLED BY:
ACRADYNE MECHANICAL ENGINEERING

**PISTOL NUTRUNNER
REAR EXIT
6000 SERIES**

SIZE	PART / DRAWING NUMBER	REVISION
D	AEP4A66 BR	B
SCALE: 2:3	DO NOT SCALE DRAWING	SHEET 2 OF 2