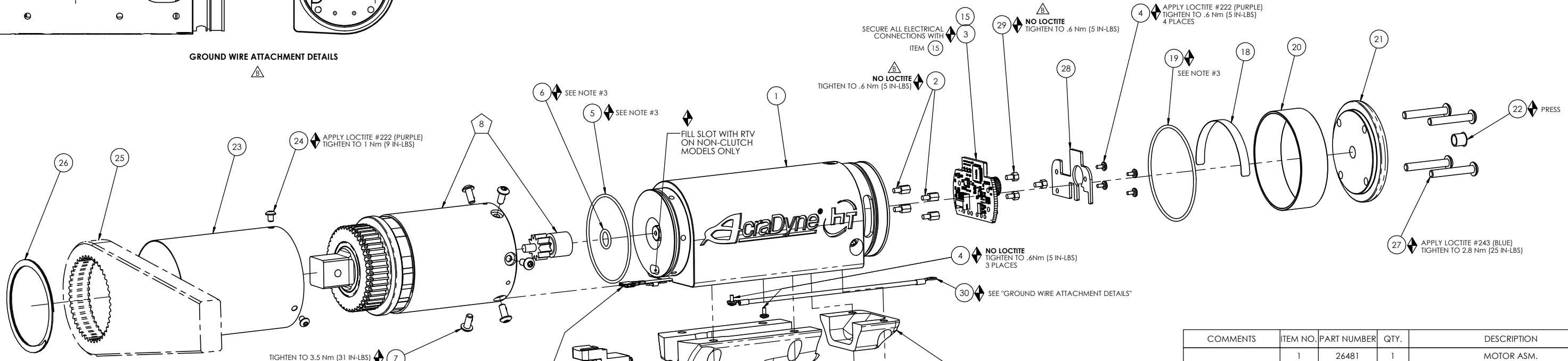


GROUND WIRE ATTACHMENT DETAILS



ITEM 24 APPLY LOCTITE #222 (PURPLE) TIGHTEN TO 1 Nm (9 IN-LBS)

TIGHTEN TO 3.5 Nm (31 IN-LBS)

CONNECT FEMALE END TO CONNECTOR ON RING GEAR. ATTACH GROUND LUG TO TAPPED HOLE IN BOTTOM OF MOTOR ASM. (1) WITH SCREW (4). FEED MALE END THRU THE BOTTOM HOLE IN MOTOR HOUSING AND ATTACH IT TO MATING CONNECTOR ON ITEM (3).

USE ITEM (15) TO SECURE TID BOARD CONNECTORS

TIGHTEN TO .3 (3 IN-LBS) 4 PLACES

NOT SHOWN

ITEM 10 APPLY LOCTITE #243 (BLUE) TIGHTEN TO 2.3 Nm (20 IN-LBS)

ITEM 12 APPLY LOCTITE #222 (PURPLE) TIGHTEN TO 1.0 Nm (9 IN-LBS)

ITEM 11 SEE ORIENTATION PG. 2 SEE "GROUND WIRE ATTACHMENT DETAILS"

ITEM 15 SECURE ALL ELECTRICAL CONNECTIONS WITH ITEM 15

ITEM 2 NO LOCTITE TIGHTEN TO .6 Nm (5 IN-LBS)

ITEM 29 NO LOCTITE TIGHTEN TO .6 Nm (5 IN-LBS)

ITEM 4 APPLY LOCTITE #222 (PURPLE) TIGHTEN TO .6 Nm (5 IN-LBS) 4 PLACES

ITEM 27 APPLY LOCTITE #243 (BLUE) TIGHTEN TO 2.8 Nm (25 IN-LBS)

ITEM 22 PRESS

COMMENTS	ITEM NO.	PART NUMBER	QTY.	DESCRIPTION
	1	26481	1	MOTOR ASM.
	2	25574	4	STANDOFF M-F, 4-40x1/4, 3/16 HEX, SS
	3	27727	1	TID BOARD, POPULATED W/AMP
	4	25573	8	SCREW PHP 4-40 X 3/16 18-8 SS
	5	26488	1	O-RING, MOTOR HOUSING
	6	26299	1	O-RING, PINION
	7	29285	6	SCREW, BHSC, 8-32 x .38, TORX HEAD, NYLON PELL-IT, BLK OXIDE
	8	SEE CHART	1	GEAR BOX ASM.
	9	26275	1	HANDLE, PISTOL
	10	26206	6	SCREW, BHSC 10-32 X .375, STEEL
	11	26288	1	TOOL CONNECTOR ASM., PISTOL
	12	25745	4	SCREW, BHSC 4-40 STEEL, BLACK OXIDE
	13	26289	1	SWITCH SUB-ASSEMBLY
NOT SHOWN	14	26526	1	TRIGGER CABLE ASM.
NOT SHOWN	15	27464	A/R	TWISTED WAXED LINEN TWINE
	16	28211	1	(4) LINE MALE/FEMALE JUMPER ASM.
	17	26224	1	TRAY, WIRE, PISTOL
	18	20534	1	SERIAL/MODEL LABEL
	19	26487	1	O-RING, LED COVER
	20	26483	1	LED COVER
	21	26482	1	END CAP, PISTOL
	22	26525	1	PLUG 5/16"
	23	26495	1	GEAR CASE COVER
	24	26319	3	SCREW, BHSC 6-32 X .188, 18-8 SS
	25	26896	1	CHOOSE REACTION BAR
	26	26514	1	RETAINING RING, SPIRAL, Ø2.441 X Ø2.105 X .078
	27	27401	4	SCREW, BHSC 10-32 X 1.25, STEEL, BLK OXIDE
	28	29336	1	TID BOARD WIRE INSULATOR
	29	29337	3	STANDOFF, M-F, 4-40 X 1/8, SS
	30	31410	1	GROUND WIRE ASSEMBLY, 18 AWG, 6000 & 7000 HT SERIES

MODEL NO.	GEAR BOX ASM.
AEP4A66250B	28658
AEP4A66425B	28798
AEP4A66625B	28108
AEP4A66925B	28109

ASSEMBLY INSTRUCTIONS  
SUB-ASSEMBLY

- 1) GEARS & SPLINES: LUBRICATE WITH DOW CORNING MOLYKOTE BR2 PLUS GREASE.
- 2) BEARINGS: LUBRICATE WITH CHEVRON SR1 GREASE
- 3) O-RINGS: LUBRICATE WITH O-RING LUBE



**DOCUMENT CONTROL**  
PRINTED COPIES OF THIS DOCUMENT ARE CONSIDERED TO BE UNCONTROLLED DOCUMENTS. HOLDERS ARE RESPONSIBLE FOR VERIFYING THE CURRENT REVISION LEVEL WITH PURCHASING OR ENGINEERING PRIOR TO USE OR FABRICATION. THE CONTROLLED VERSION OF THIS DOCUMENT IS ELECTRONICALLY MAINTAINED.

**PROPRIETARY AND CONFIDENTIAL**  
THIS DRAWING CONTAINS INFORMATION STRICTLY CONFIDENTIAL TO ACRADYNE/AMCO. IN THE ABSENCE OF EXPRESSED WRITTEN PERMISSION, ACRADYNE/AMCO HAS LOANED THIS COPY WITH THE MUTUAL UNDERSTANDING THAT (A) IT WILL NOT BE USED FOR ANY PURPOSE OTHER THAN FOR THAT IN WHICH IT WAS PROVIDED, (B) THE DATA CONTAINED HEREIN WILL NOT BE DISCLOSED TO OTHERS, (C) IT WILL NOT BE REPRODUCED, AND (D) IT WILL BE RETURNED TO ACRADYNE/AMCO IMMEDIATELY UPON DEMAND.

REVISION LEVEL	REVISION RELEASE DATE	DESCRIPTION OF CHANGES MADE TO PART	ECN #	AUTHOR / APPROVAL
REVISION BLOCK				

**UNLESS OTHERWISE SPECIFIED, DIMENSIONS ARE IN INCHES**  
DIMENSIONS AND TOLERANCING PER ANSI Y14.5 SURFACE ROUGHNESS PER ANSI Y14.36

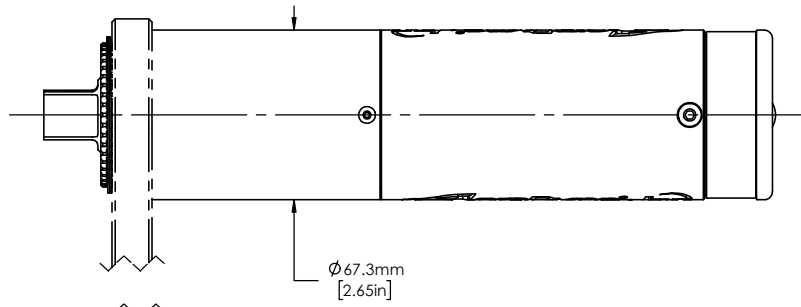
**BLOCK TOLERANCING PER DECIMAL:**  
X = ±.030 .XX = ±.010 .XXX = ±.005 .XXXX = ±.0005  
ANGLE = ±0°30'

REMOVE BURRS AND SHARP EDGES: R.015 MAX MACHINE SURFACE FINISH: 125 RMS OR BETTER

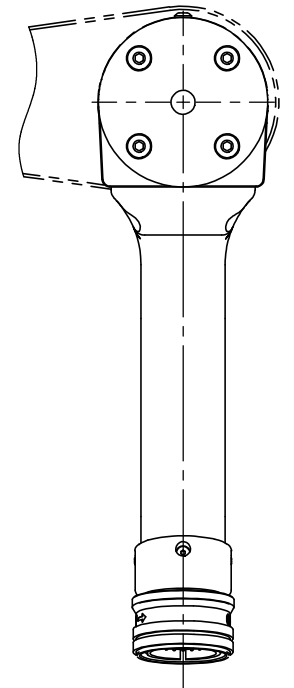
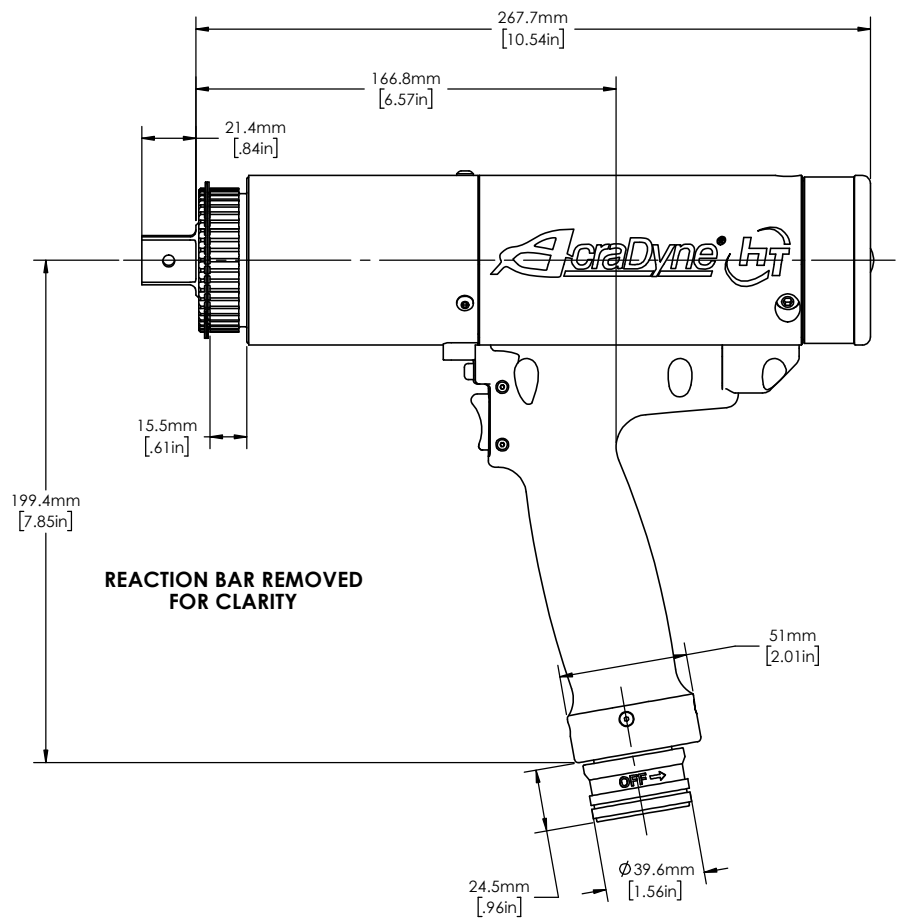
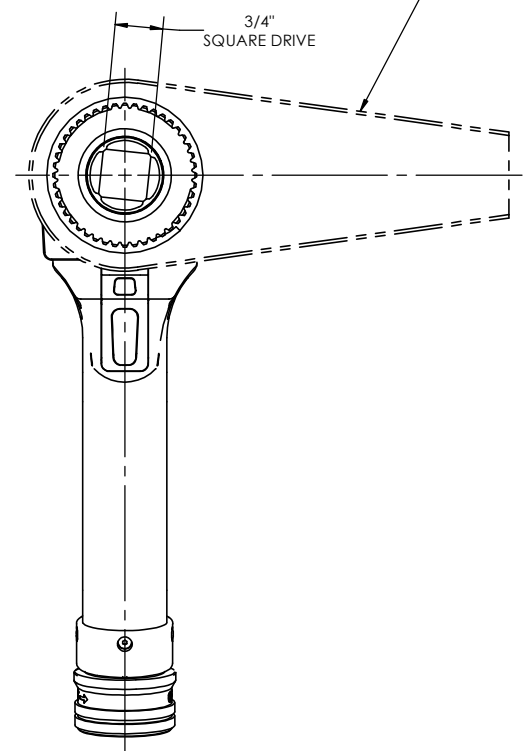
DRAWINGS AND TECHNICAL DOCUMENTS CONTROLLED BY:  
**ACRADYNE MECHANICAL ENGINEERING**

**PISTOL NUTRUNNER**  
6000 SERIES

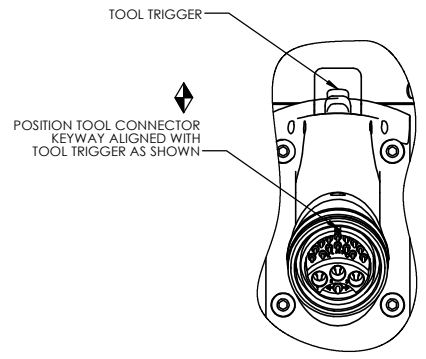
SIZE	PART / DRAWING NUMBER	REVISION
<b>D</b>	<b>AEP4A66 B</b>	<b>B</b>
SCALE 3:4	DO NOT SCALE DRAWING	SHEET 1 OF 2



**NOTE:**  
REACTION BAR GEOMETRY  
TO CHANGE DEPENDING  
ON REACTION BAR CHOSEN.



<b>MODEL NO.</b>
AEP4A66250B
AEP4A66425B
AEP4A66625B
AEP4A66925B



**DOCUMENT CONTROL**  
PRINTED COPIES OF THIS DOCUMENT ARE CONSIDERED TO BE UNCONTROLLED DOCUMENTS. HOLDERS ARE RESPONSIBLE FOR VERIFYING THE CURRENT REVISION LEVEL WITH PURCHASING OR ENGINEERING PRIOR TO USE OR FABRICATION. THE CONTROLLED VERSION OF THIS DOCUMENT IS ELECTRONICALLY MAINTAINED.

**PROPRIETARY AND CONFIDENTIAL**  
THIS DRAWING CONTAINS INFORMATION STRICTLY CONFIDENTIAL TO ACRADYNE/AIMCO. IN THE ABSENCE OF EXPRESSED WRITTEN PERMISSION, ACRADYNE/AIMCO HAS LOANED THIS COPY WITH THE MUTUAL UNDERSTANDING THAT (A) IT WILL NOT BE USED FOR ANY PURPOSE OTHER THAN FOR THAT IN WHICH IT WAS PROVIDED, (B) THE DATA CONTAINED HEREIN WILL NOT BE DISCLOSED TO OTHERS, (C) IT WILL NOT BE REPRODUCED, AND (D) IT WILL BE RETURNED TO ACRADYNE/AIMCO IMMEDIATELY UPON DEMAND.

REVISION LEVEL	REVISION RELEASE DATE	DESCRIPTION OF CHANGES MADE TO PART	ECN #	AUTHOR/ APPROVAL

**UNLESS OTHERWISE SPECIFIED, DIMENSIONS ARE IN INCHES**  
DIMENSIONS AND TOLERANCING PER ANSI Y14.5  
SURFACE ROUGHNESS PER ANSI Y14.36

**BLOCK TOLERANCING PER DECIMAL:**  
.X = ±.030 .XX = ±.010 .XXX = ±.005 .XXXX = ±.0005  
ANGLE = ±0° 30'

REMOVE BURRS AND SHARP EDGES: R.015 MAX  
MACHINE SURFACE FINISH: 125 RMS OR BETTER

DRAWINGS AND TECHNICAL DOCUMENTS CONTROLLED BY:  
**ACRADYNE MECHANICAL ENGINEERING**

<b>PISTOL NUTRUNNER</b> 6000 SERIES		
SIZE	PART / DRAWING NUMBER	REVISION
<b>D</b>	<b>AEP4A66</b> <b>B</b>	<b>B</b>
SCALE: 2:3	DO NOT SCALE DRAWING	SHEET 2 OF 2