

REQUIRED TOOLING	
SNAP-ON CROWFOOT WRENCH, 1/2" SQ. DR. X 1-3/8" OPENING	
SNAP-ON PART NUMBER SC044	
MAGNETIC VISE JAWS - PART NUMBER 1000-100	
LOCTITE #243 BLUE	
TORQUE WRENCH, 1/2" DRIVE	
EXTERNAL SNAP RING PLIERS	
LOCTITE #263 RED	
HEX KEY - 9/64"	
HEX KEY - 3/32"	
HEX KEY - 1/16"	
PHILLIPS HEAD SCREW DRIVER	
TORX - T8	
TORX - T10	

TOOL MODEL	TRANSDUCER SUB-ASM.	GEAR CASE SUB-ASM.
AEN4F220308BMF	25761.009 (20Nm)	24901, 14T/14T
AEN4F220378BMF	25762.003 (40Nm)	24894, 12T/12T
AEN4F220448BMF	25762.004 (40Nm)	24902, 8T/14T

COMMENTS	ITEM NO.	PART NUMBER	QTY.	DESCRIPTION
	1	26787	1	MOTOR ASM., MID-EXIT
	2	24780	1	MOTOR COUPLER SUB-ASM.
	3	25763	1	TRANSDUCER ADAPTOR
	4	SEE CHART	1	TRANSDUCER SUB-ASM.
	5	SEE CHART	1	GEAR CASE SUB-ASM.
	6	26695	1	TOOL CONNECTOR HOUSING
	7	26696	1	TOOL CONNECTOR ASSEMBLY, MID-EXIT
	8	25745	4	SCREW, BHSC 4-40 STEEL, BLACK OXIDE
	9	25814	1	SCREW, PAN HEAD PHILLIPS, 4-40 x 3/16, STAR WASH, SS
	10	24174	A/R	HEAT SHRINK, Ø.125
	11	26166	8	SCREW, BHSC 6-32X.312, STEEL, BLACK OXIDE
	12	25868	2	SCREW, PLASTITE, PH TORX, M2.5 X 1.06 X 5, STEEL
	13	26742	1	EXTENSION SHAFT, 2"
	14	20047	1	BALL BEARING, .3543 X .9449 X .2756 IN
	15	26741	1	EXTENSION TUBE, 2"
	16	27668	1	ANGLE HEAD ASM., "STUBBY", FLUSH SOCKET HEAD
	17	21091	A/R	SHIM, PINION SHAFT, .002 --- 2000 SERIES
	18	21092	A/R	SHIM, PINION SHAFT, .005 --- 2000 SERIES
	19	21093	A/R	SHIM, PINION SHAFT, .010 --- 2000 SERIES
	20	26691	2	TRIGGER MOUNT
	21	20132	1	THROTTLE SPRING
	22	26697	1	LEVER ASM., MID-EXIT
	23	26719	2	SCREW, LHSC 8-32X .375, STEEL, BLACK OXIDE
	24	26686	1	MOTOR COVER
	25	25557	1	REV BUTTON SUB-ASSEMBLY
	26	24683	1	SPRING, REV BUTTON
	27	24679	1	RETAINING RNG
	28	26698	2	SCREW, PH TORX 4-20 X 1/2" LG. PLASTIC
	29	26699	1	LIGHT RING
	30	26720	1	O-RING, LIGHT RING
	31	20534	1	SERIAL/MODEL LABEL
	32	25471	1	CLEAR LABEL COVER
SEE SHEET #3 SOCKET CONFIGURATION CHART	33	27659	1	SOCKET BLANK, FLUSH HEAD

NOTE: SEE SHEET #3 FOR SOCKET CONFIGURATION CHART AND COMPLETE TOOL MODEL NUMBER TO ORDER.

- ◆ ASSEMBLY INSTRUCTIONS
◡ SUB-ASSEMBLY
- GEARS & SPLINES: LUBRICATE WITH DOW CORNING MOLYKOTE BR2 PLUS GREASE.
 - BEARINGS: LUBRICATE WITH CHEVRON SR1 GREASE
 - O-RINGS: LUBRICATE WITH O-RING LUBE

AIMCO
A Division of AIMCO
10000 SE PINE STREET
PORTLAND, OREGON 97216
503.254.6600

DOCUMENT CONTROL
PRINTED COPIES OF THIS DOCUMENT ARE CONSIDERED TO BE UNCONTROLLED DOCUMENTS. HOLDERS ARE RESPONSIBLE FOR VERIFYING THE CURRENT REVISION LEVEL WITH PURCHASING OR ENGINEERING PRIOR TO USE OR FABRICATION. THE CONTROLLED VERSION OF THIS DOCUMENT IS ELECTRONICALLY MAINTAINED.

PROPRIETARY AND CONFIDENTIAL
THIS DRAWING CONTAINS INFORMATION STRICTLY CONFIDENTIAL TO ACRADYNE/AIMCO. IN THE ABSENCE OF EXPRESSED WRITTEN PERMISSION, ACRADYNE/AIMCO HAS LOANED THIS COPY WITH THE MUTUAL UNDERSTANDING THAT (A) IT WILL NOT BE USED FOR ANY PURPOSE OTHER THAN FOR THAT IN WHICH IT WAS PROVIDED, (B) THE DATA CONTAINED HEREIN WILL NOT BE DISCLOSED TO OTHERS, (C) IT WILL NOT BE REPRODUCED, AND (D) IT WILL BE RETURNED TO ACRADYNE/AIMCO IMMEDIATELY UPON DEMAND.

REVISION LEVEL	REVISION RELEASE DATE	DESCRIPTION OF CHANGES MADE TO PART	ECN #	AUTHOR/ APPROVAL

REVISION BLOCK

UNLESS OTHERWISE SPECIFIED,
DIMENSIONS ARE IN INCHES
DIMENSIONS AND TOLERANCING PER ANSI Y14.5
SURFACE ROUGHNESS PER ANSI Y14.36

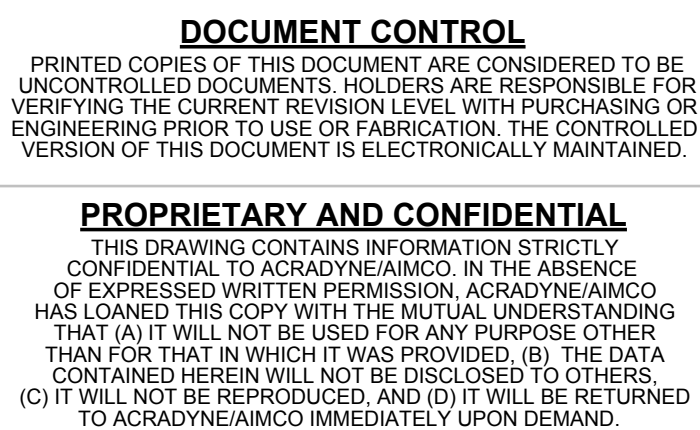
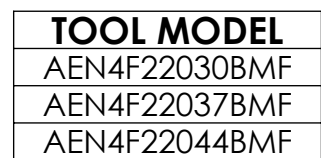
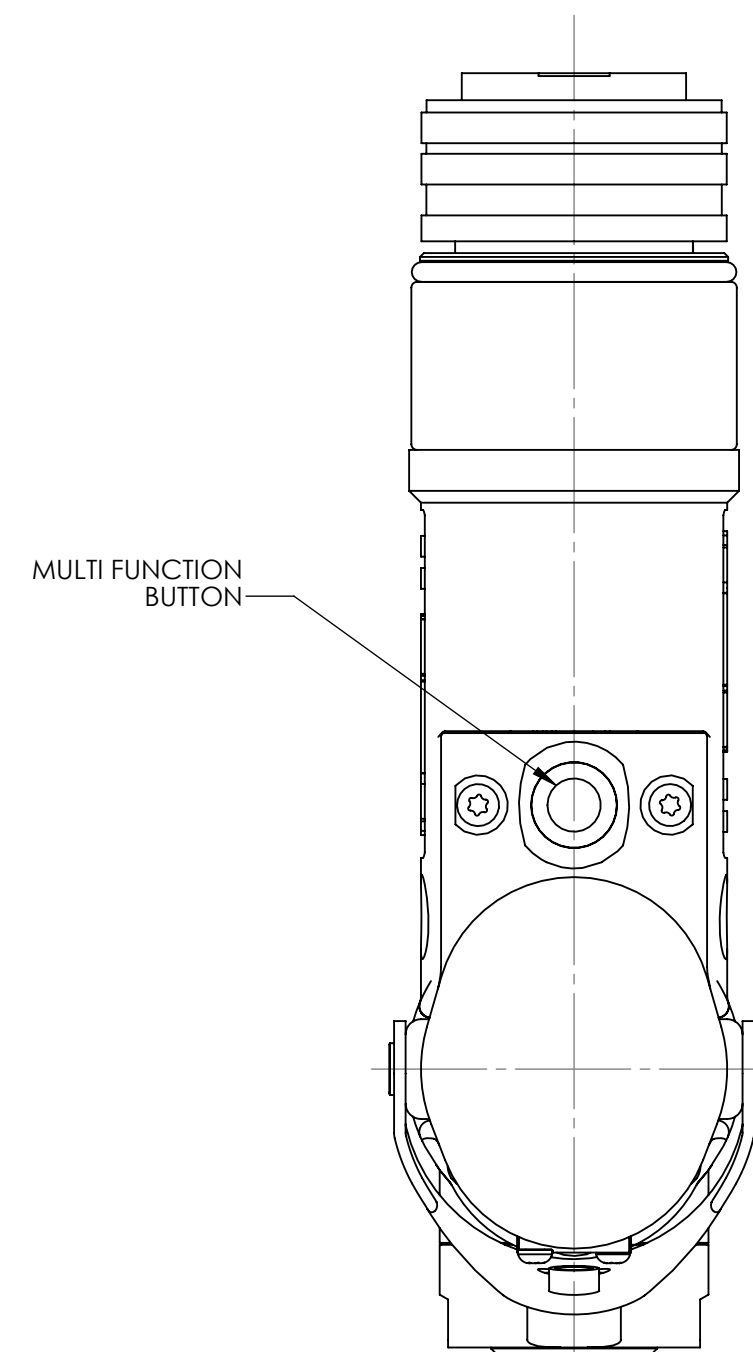
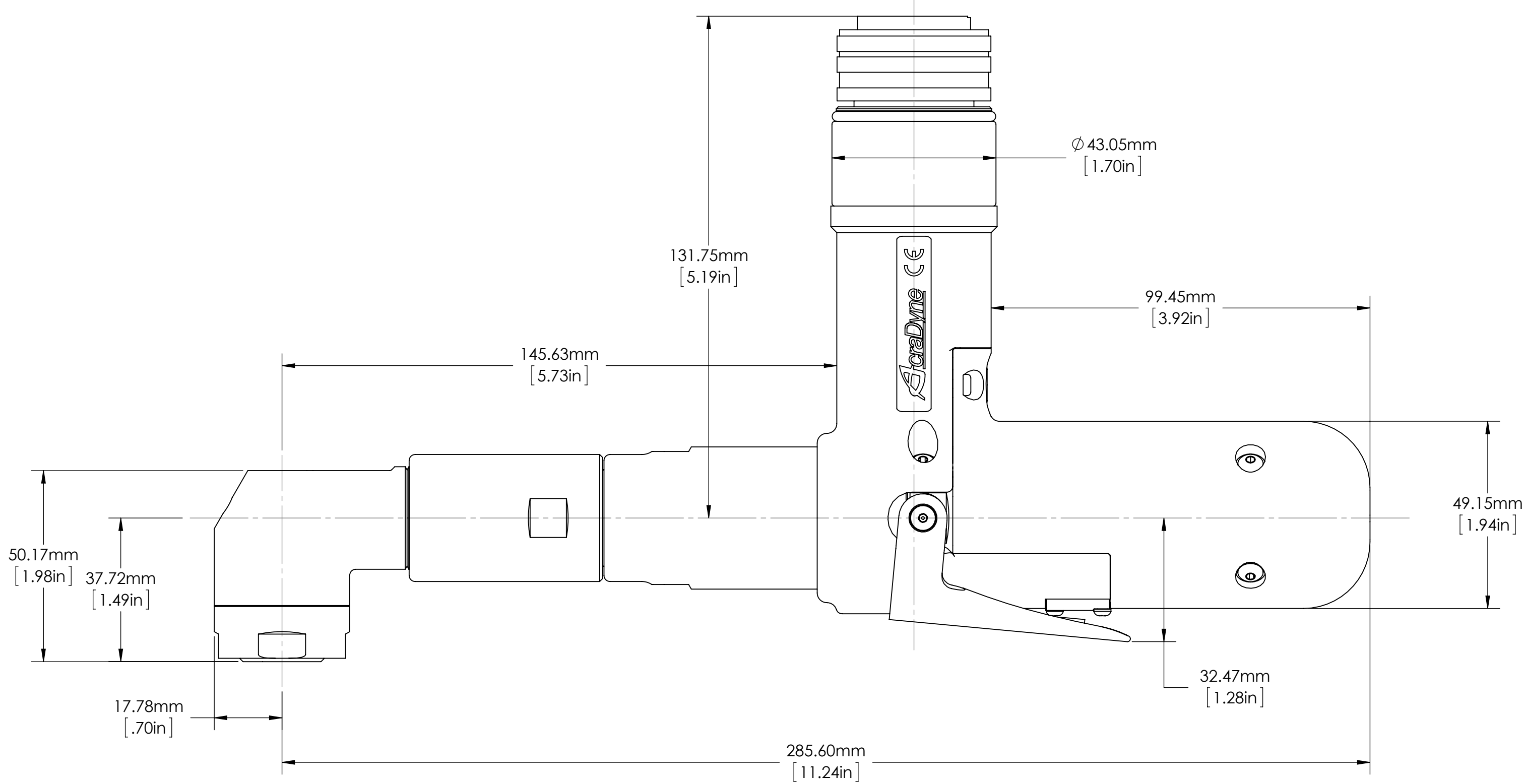
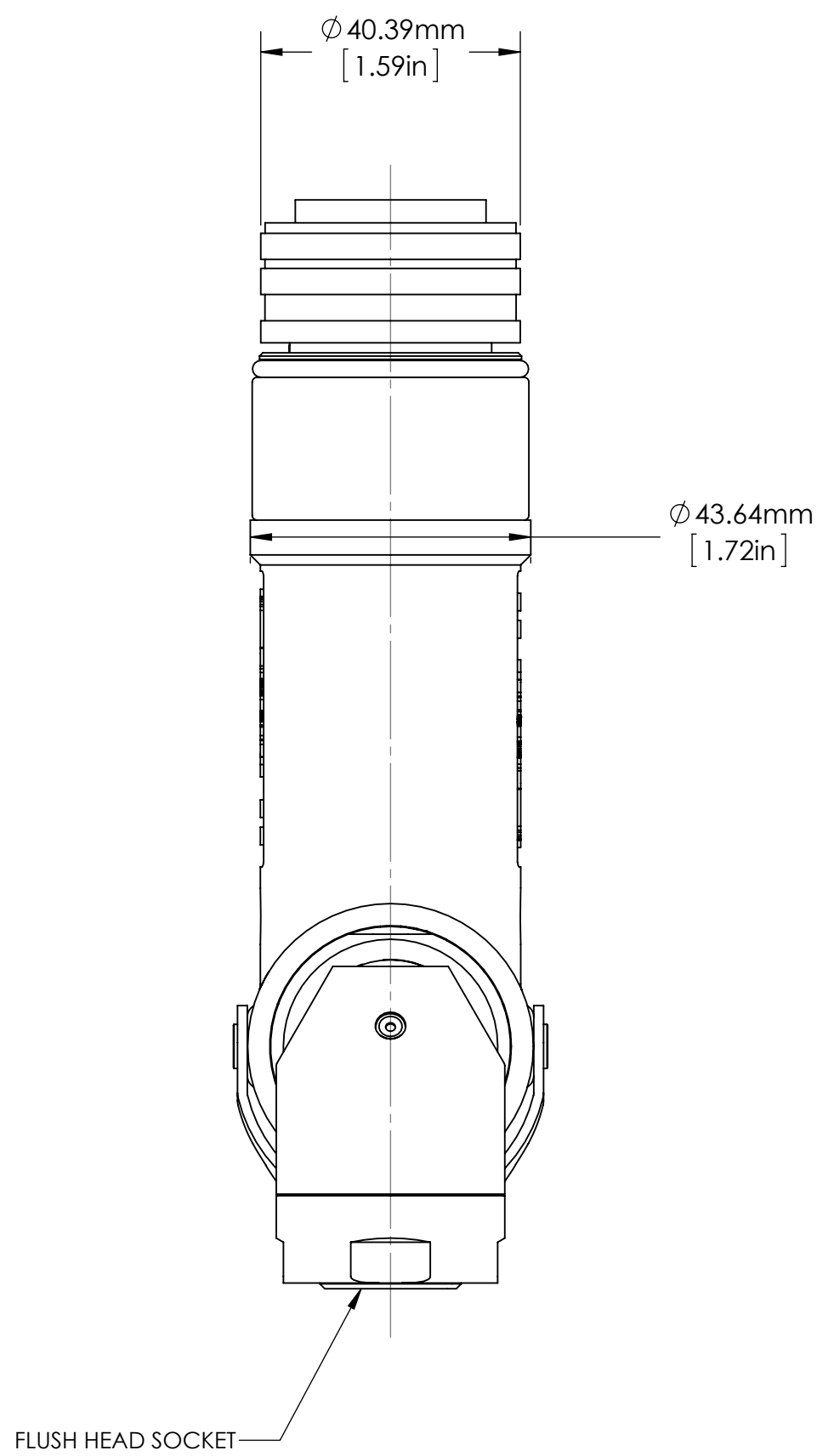
BLOCK TOLERANCING PER DECIMAL:
X = ±.030 .XX = ±.010 .XXX = ±.005 .XXXX = ±.0005
ANGLE = ±0° 30'

REMOVE BURRS AND SHARP EDGES: R.015 MAX
MACHINE SURFACE FINISH: 125 RMS OR BETTER

DRAWINGS AND TECHNICAL DOCUMENTS CONTROLLED BY:
ACRADYNE MECHANICAL ENGINEERING

AEN4F220_BMF
ANGLE NUTRUNNER
MID-EXIT, FLUSH SOCKET
GEN 4, 2000 SERIES

SIZE	PART / DRAWING NUMBER	REVISION
D	AEN4F220_BMF	A
SCALE 1:1	DO NOT SCALE DRAWING	SHEET 1 OF 3



REVISION LEVEL	REVISION RELEASE DATE	DESCRIPTION OF CHANGES MADE TO PART	ECN #	AUTHOR/ APPROVAL
REVISION BLOCK				

**UNLESS OTHERWISE SPECIFIED,
DIMENSIONS ARE IN INCHES**
DIMENSIONS AND TOLERANCING PER ANSI Y14.5
SURFACE ROUGHNESS PER ANSI Y14.36

BLOCK TOLERANCING PER DECIMAL:
 $.X = \pm .030$ $.XX = \pm .010$ $.XXX = \pm .005$ $.XXXX = \pm .0005$
ANGLE = 0° $30'$

REMOVE BURRS AND SHARP EDGES; R.015 MAX
MACHINE SURFACE FINISH: 125 RMS OR BETTER

**DRAWINGS AND TECHNICAL DOCUMENTS CONTROLLED BY:
ACRADYNE MECHANICAL ENGINEERING**

AEN4F220__BMF
ANGLE NUTRUNNER
MID-EXIT, FLUSH SOCKET
GEN 4, 2000 SERIES

SIZE	PART / DRAWING NUMBER	REVISION
D	AEN4F220__BMF	A
SCALE 1:1	DO NOT SCALE DRAWING	SHEET 2 OF 3

