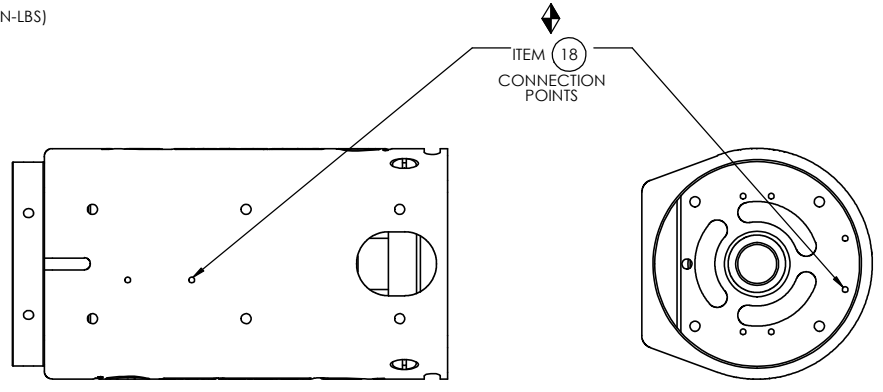
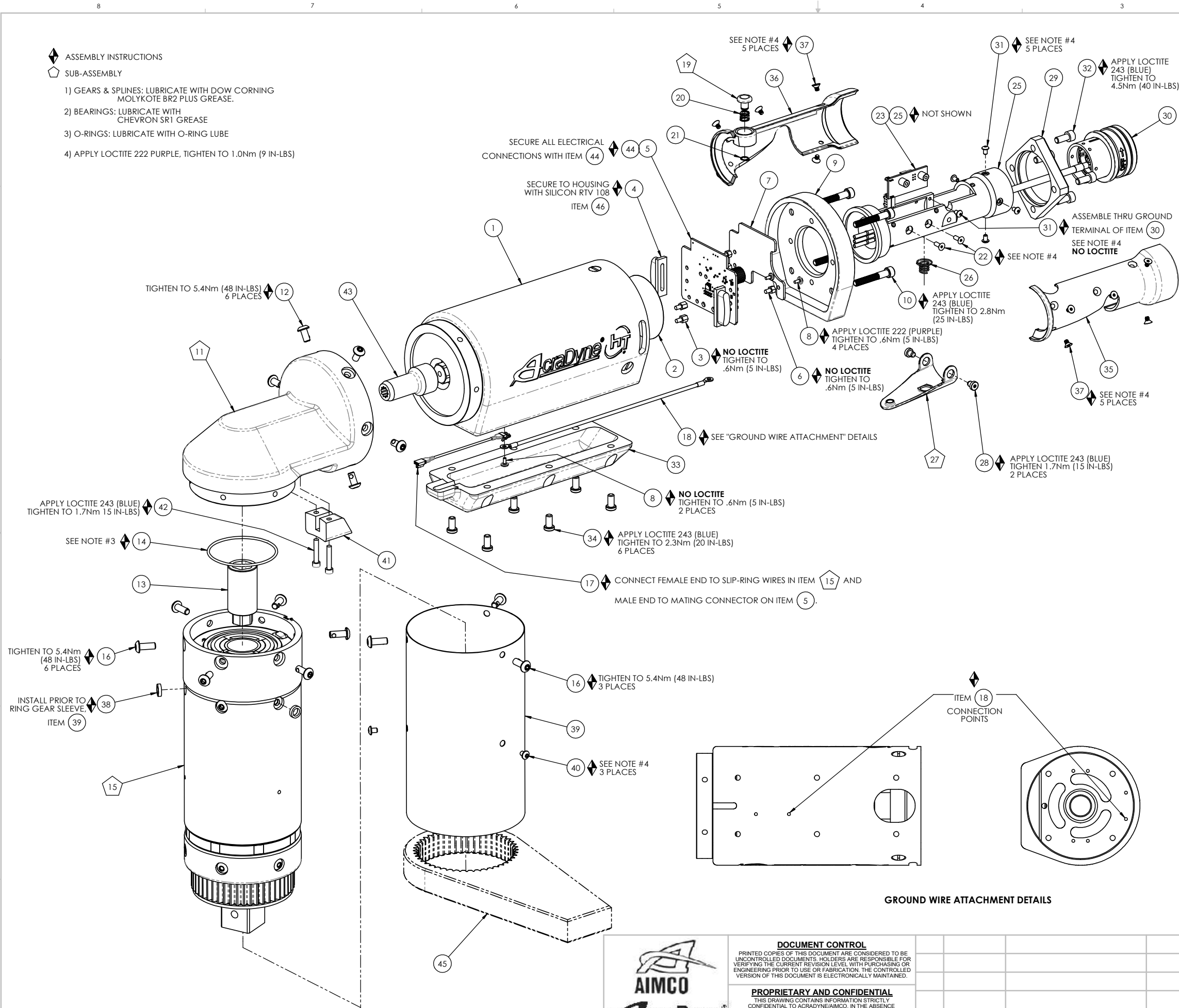


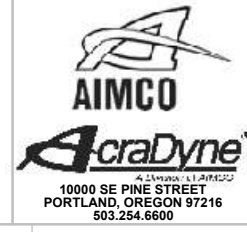
◆ ASSEMBLY INSTRUCTIONS

- ◇ SUB-ASSEMBLY
- 1) GEARS & SPLINES: LUBRICATE WITH DOW CORNING MOLYKOTE BR2 PLUS GREASE.
- 2) BEARINGS: LUBRICATE WITH CHEVRON SR1 GREASE
- 3) O-RINGS: LUBRICATE WITH O-RING LUBE
- 4) APPLY LOCTITE 222 PURPLE, TIGHTEN TO 1.0Nm (9 IN-LBS)



COMMENTS	ITEM NO.	PART NUMBER	QTY.	DESCRIPTION
	1	26160	1	ASSY, MOTOR, 4650
	2	24840	1	FOIL SEAL 2" DIA
	3	29335	4	STANDOFF, M-F, 4-40 X 3/16, SS
	4	25490	2	LENS, LED, INJECTION MOLDED
	5	27797	1	TID BOARD, POPULATED W/O AMP CIRCUIT
	6	29337	3	STANDOFF, M-F, 4-40 X 1/8, SS
	7	29338	1	TID WIRE INSULATOR
	8	25573	6	SCREW PHP 4-40 X 3/16 18-8 SS
	9	31608	1	END CAP, AES MODELS
	10	25568	4	SHC 10-32 x 1.25 BLK OXIDE
	11	31850	1	ANGLEHEAD ASM., HT TOOL
	12	29279	6	SCREW, BHSC, 10-32 x 3/8, TORX HEAD, NYLON PELL-IT, STEEL
	13	27980	1	SLIP RING PINION ADAPTER
	14	26080	1	O-RING, LED LIGHT RING COVER
	15	SEE CHART	1	GEARBOX AND CLUTCH ASM.
	16	29284	9	SCREW, BHSC, 10-32 X 1/2, TORX HEAD, NYLON PELL-IT, STEEL
	17	31395.002	1	(3) LINE MALE/FEMALE JUMPER, 3 INCH LENGTH
	18	31412	1	GROUND WIRE ASSEMBLY, 18 AWG, 8000 & 9000 HT SERIES
	19	24706	1	REV BUTTON SUB-ASSEMBLY
	20	24683	1	SPRING, REV BUTTON
	21	24679	1	RETAINING RNG
	22	24934	2	SCREW, FHC 4-40 X .312, STEEL, BLACK OXIDE
	23	26285	1	LEVER TRIGGER PCB ASM.
NOT SHOWN	24	26526	1	HT TOOL TRIGGER CABLE
	25	31595	1	LEVER HANDLE, AES MODELS
	26	20132	1	THROTTLE SPRING
	27	26532	1	GEN 3 TRIGGER ASSY, CAST
	28	20061	2	SCREW, LEVER
	29	28058	1	FLANGE, HT DUAL LEVER
	30	27660	1	TOOL CONNECTOR ASM., STRAIGHT
	31	25745	5	SCREW, BHSC 4-40 STEEL, BLACK OXIDE
	32	26458	4	SCREW, SHC 10-32 X .44 LG., STEEL, BLACK OXIDE
	33	25231	1	TRAY, WIRE, END GRIP
	34	25569	6	SCREW LHCS 10-32 X 3/8 18-8 SS
	35	26083	1	HANDLE COVER
	36	26084	1	HANDLE COVER, MFB
	37	24938	10	SCREW, FHSC 4-40X.188, STEEL, BLACK OXIDE
	38	25564	3	WASHER SHIM .093THK .25ID .375OD
	39	28203	1	HT TOOL TRANSDUCER SLEEVE
	40	26319	3	SCREW, BHSC 6-32 X .188, 18-8 SS
	41	31832	1	TRANSDUCER WIRE COVER
	42	26163	2	SCREW, SHC, 6-32 x .75 LG., BLACK OXIDE
	43	31846	1	COUPLER, MOTOR, HT ANGLEHEAD
NOT SHOWN	44	27464	A/R	TWISTED WAXED LINEN TWINE
	45	26898	1	CHOOSE REACTION BAR
	46	24177	A/R	CLEAR SILICON, RTV 108

MODEL NO.	GEARBOX/CLUTCH ASM.
AEN4B885000B1	31854.002
AEN4B885000B	31855.002



DOCUMENT CONTROL
PRINTED COPIES OF THIS DOCUMENT ARE CONSIDERED TO BE UNCONTROLLED DOCUMENTS. HOLDERS ARE RESPONSIBLE FOR VERIFYING THE CURRENT REVISION LEVEL WITH PURCHASING OR ENGINEERING PRIOR TO USE OR FABRICATION. THE CONTROLLED VERSION OF THIS DOCUMENT IS ELECTRONICALLY MAINTAINED.

PROPRIETARY AND CONFIDENTIAL
THIS DRAWING CONTAINS INFORMATION STRICTLY CONFIDENTIAL TO ACRADYNE/AIMCO. IN THE ABSENCE OF EXPRESSED WRITTEN PERMISSION, ACRADYNE/AIMCO HAS LOANED THIS COPY WITH THE MUTUAL UNDERSTANDING THAT (A) IT WILL NOT BE USED FOR ANY PURPOSE OTHER THAN FOR THAT IN WHICH IT WAS PROVIDED, (B) THE DATA CONTAINED HEREIN WILL NOT BE DISCLOSED TO OTHERS, (C) IT WILL NOT BE REPRODUCED, AND (D) IT WILL BE RETURNED TO ACRADYNE/AIMCO IMMEDIATELY UPON DEMAND.

REVISION LEVEL	REVISION RELEASE DATE	DESCRIPTION OF CHANGES MADE TO PART	ECN #	AUTHOR/ APPROVAL

UNLESS OTHERWISE SPECIFIED, DIMENSIONS ARE IN INCHES
DIMENSIONS AND TOLERANCING PER ANSI Y14.5 SURFACE ROUGHNESS PER ANSI Y14.36

BLOCK TOLERANCING PER DECIMAL:
X = ±.030 XX = ±.010 XXX = ±.005 XXXX = ±.0005
ANGLE = ±0° 30'

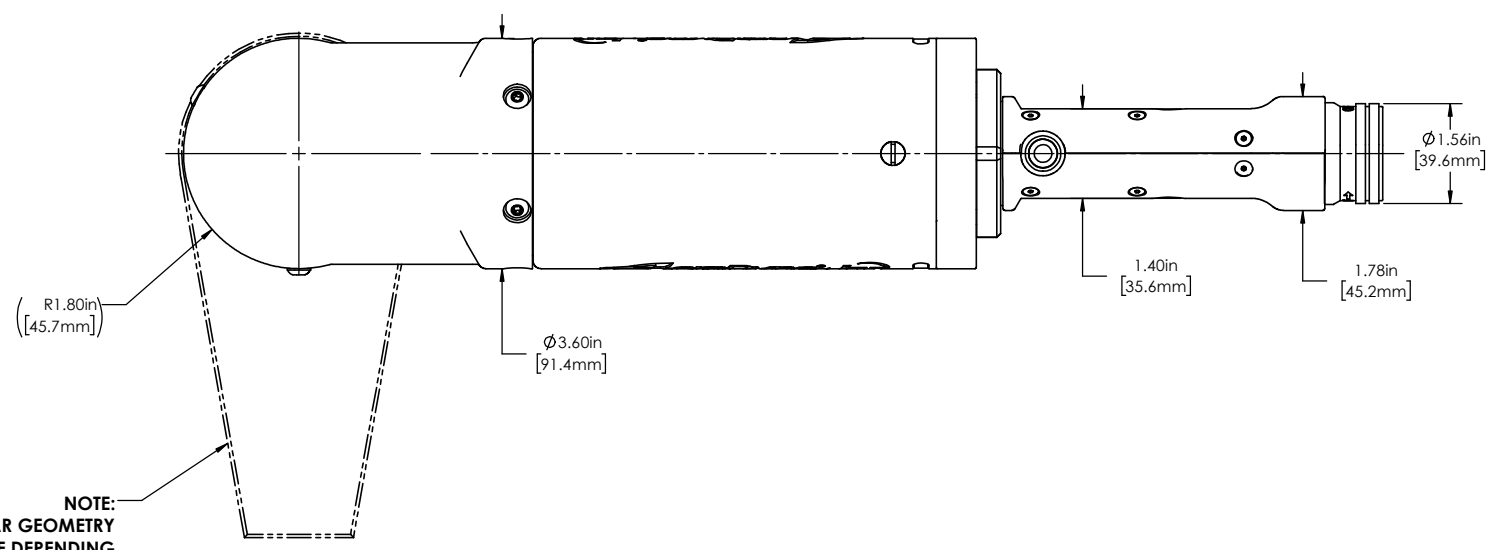
REMOVE BURRS AND SHARP EDGES: R.015 MAX MACHINE SURFACE FINISH: 125 RMS OR BETTER

DRAWINGS AND TECHNICAL DOCUMENTS CONTROLLED BY:
ACRADYNE MECHANICAL ENGINEERING

ANGLEHEAD NUTRUNNER, W/SLIPRING CLUTCH 8000-SERIES

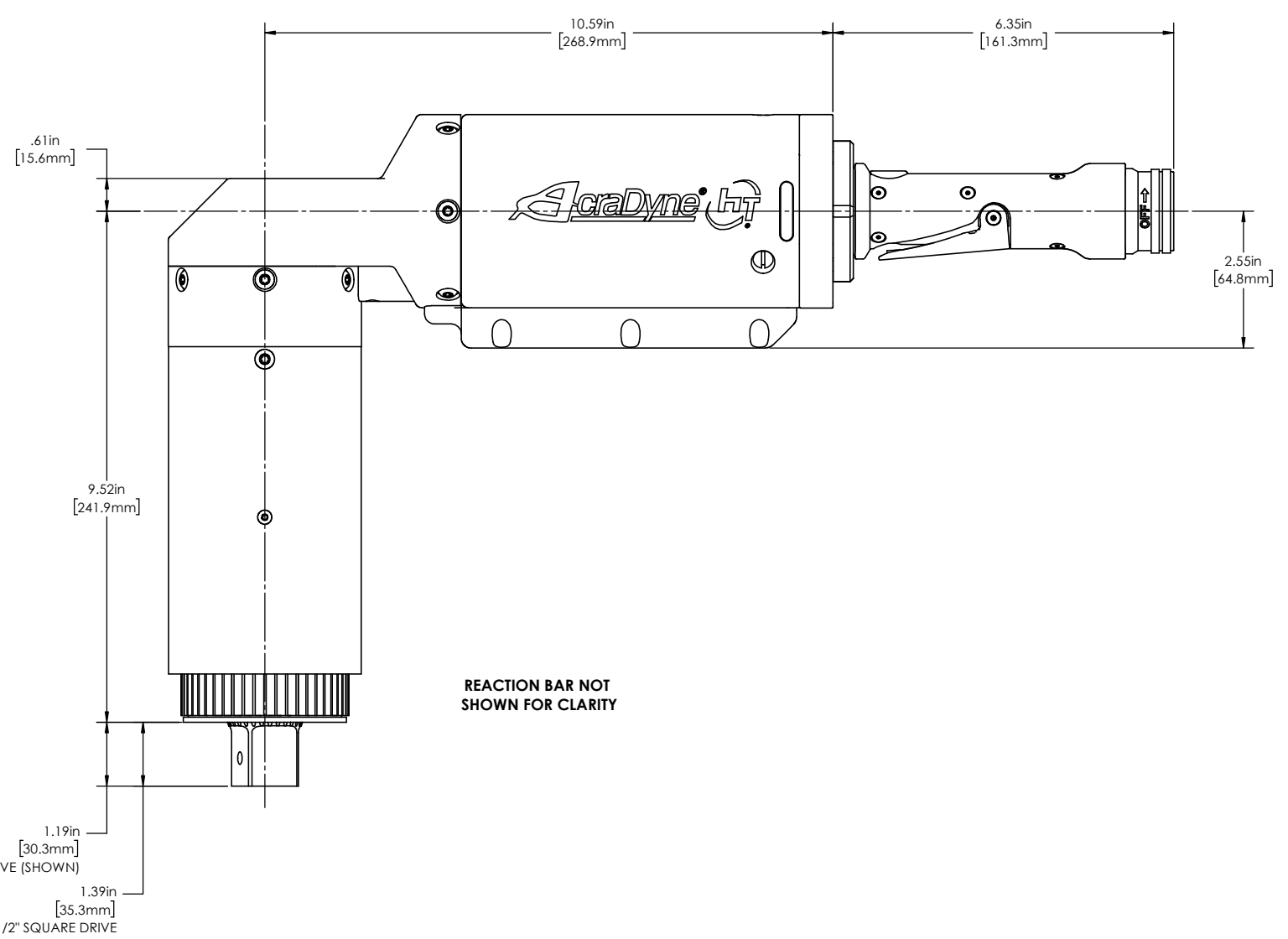
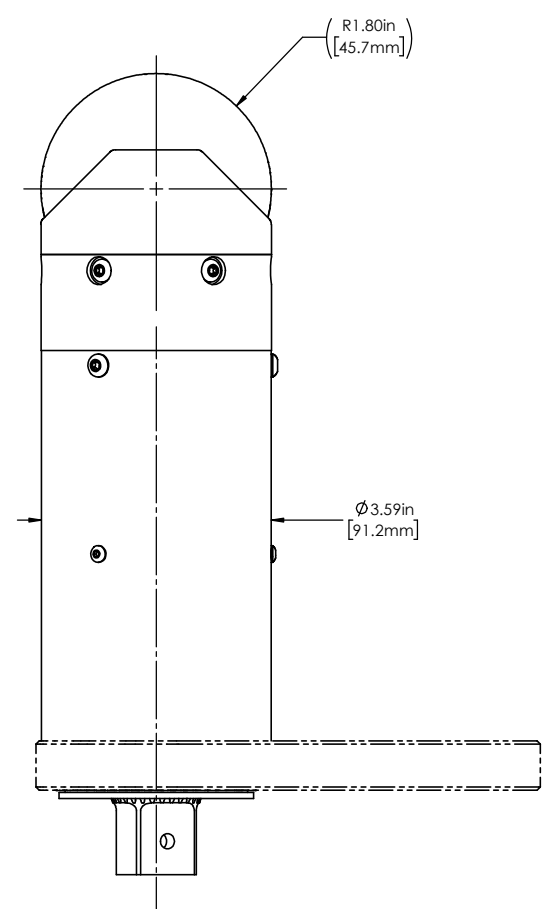
SIZE **D** PART / DRAWING NUMBER **AEN4B885000B** REVISION **A**

SCALE 2:3 DO NOT SCALE DRAWING SHEET 1 OF 2

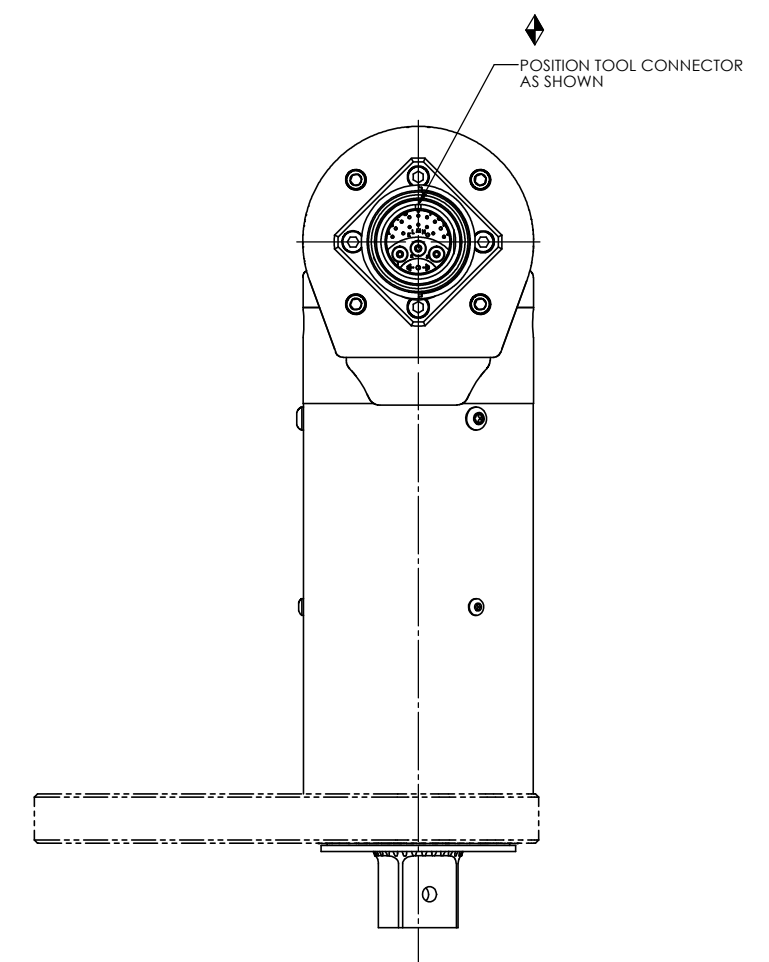


MODEL NO.	SQUARE DRIVE
AEN4B885000B1	1"
AEN4B885000B	1-1/2"

NOTE:
REACTION BAR GEOMETRY
TO CHANGE DEPENDING
ON REACTION BAR CHOSEN



REACTION BAR NOT
SHOWN FOR CLARITY



DOCUMENT CONTROL
PRINTED COPIES OF THIS DOCUMENT ARE CONSIDERED TO BE UNCONTROLLED DOCUMENTS. HOLDERS ARE RESPONSIBLE FOR VERIFYING THE CURRENT REVISION LEVEL WITH PURCHASING OR ENGINEERING PRIOR TO USE OR FABRICATION. THE CONTROLLED VERSION OF THIS DOCUMENT IS ELECTRONICALLY MAINTAINED.

PROPRIETARY AND CONFIDENTIAL
THIS DRAWING CONTAINS INFORMATION STRICTLY CONFIDENTIAL TO ACRADYNE/AIMCO. IN THE ABSENCE OF EXPRESSED WRITTEN PERMISSION, ACRADYNE/AIMCO HAS LOANED THIS COPY WITH THE MUTUAL UNDERSTANDING THAT (A) IT WILL NOT BE USED FOR ANY PURPOSE OTHER THAN FOR THAT IN WHICH IT WAS PROVIDED, (B) THE DATA CONTAINED HEREIN WILL NOT BE DISCLOSED TO OTHERS, (C) IT WILL NOT BE REPRODUCED, AND (D) IT WILL BE RETURNED TO ACRADYNE/AIMCO IMMEDIATELY UPON DEMAND.

REVISION LEVEL	REVISION RELEASE DATE	DESCRIPTION OF CHANGES MADE TO PART	ECN #	AUTHOR/ APPROVAL

UNLESS OTHERWISE SPECIFIED, DIMENSIONS ARE IN INCHES
DIMENSIONS AND TOLERANCING PER ANSI Y14.5
SURFACE ROUGHNESS PER ANSI Y14.36

BLOCK TOLERANCING PER DECIMAL:
.X = ±.030 .XX = ±.010 .XXX = ±.005 .XXXX = ±.0005
ANGLE = ±0° 30'

REMOVE BURRS AND SHARP EDGES: R.015 MAX
MACHINE SURFACE FINISH: 125 RMS OR BETTER

DRAWINGS AND TECHNICAL DOCUMENTS CONTROLLED BY:
ACRADYNE MECHANICAL ENGINEERING

**ANGLEHEAD NUTRUNNER,
W/SLIPRING CLUTCH**
8000-SERIES

SIZE D	PART / DRAWING NUMBER AEN4B885000B	REVISION A
SCALE: 2:3	DO NOT SCALE DRAWING	SHEET 2 OF 2