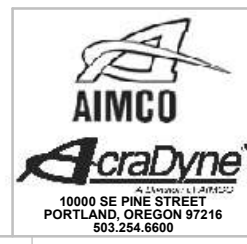


COMMENTS	ITEM NO.	PART NUMBER	QTY.	DESCRIPTION
	1	31452	1	MOTOR/FAN SUB-ASM., 12K Nm
	2	30734	1	CONNECTOR, 2 POS, MALE PINS, MOLEX 70107-0001
NOT SHOWN	3	30738	2	CRIMP TERMINAL, CONNECTOR, MALE 22-24 AWG
	4	31397	1	OFFSET GEARBOX ASM., 12K Nm
	5	25021	2	SCREW, SHC 1/4-20 X 1, STEEL, BLACK OXIDE
	6	23564	1	SCREW, SHC 1/4-20 X .875, STEEL, BLACK OXIDE
	7	29593	1	SCREW, SHC, 1/4-20 X 5/8, BLK OXIDE
	8	31454	1	GEARBOX/CLUTCH ASM., 12K Nm
	9	31450	1	OFFSET GEARBOX TOP SUB-ASM., 12K Nm
	10	27953	1	O-RING, 70 DURO BUNA N, -042
	11	25168	6	SCREW, SHC, 10-32 X 5/8, STEEL, BLACK OXIDE
	12	29992	4	SCREW, BHSC 1/4-20 X 1.625, STEEL
	13	31382	1	TRANSDUCER WIRE COVER, 12K Nm
	14	31456	2	SCREW, BHSC 10-32 X 1, STEEL, BLACK OXIDE
	15	31535	1	TOOL CONNECTOR/HANDLE ADAPTER PLATE
	16	31411	8	LIGHTPIPE, LED, PANEL MOUNT, CONVEX, .250" LENGTH
	17	25574	4	STANDOFF M-F, 4-40X1/4.3/1/6 HEX, SS
	18	31290	1	TOOL CONNECTOR ASSEMBLY, 17,000Nm
	19	25745	2	SCREW, BHSC 4-40 STEEL, BLACK OXIDE
	20	20532	4	SCREW, 6-32X1/4 BUTTON SOC CAP
	21	31417	1	MALE RECEPTACLE CABLE ASSY, 3-PIN, 6.56FT, 2-PIN CONNECTOR
	22	27785	1	TID BOARD, POPULATED W/O AMP CIRCUIT
	23	29337	3	STANDOFF, M-F, 4-40 X 1/8, SS
	24	29336	1	TID BOARD WIRE INSULATOR
	25	25573	6	SCREW PHP 4-40 X 3/16 18-8 SS
	26	26276	1	"D" / "J" HANDLE
	27	26239	1	"J" HANDLE PLUG
	28	25212	1	SWITCH SUB-ASSEMBLY
NOT SHOWN	29	26526	1	HT TOOL TRIGGER CABLE
	30	31621	4	SCREW, SHC 10-32 X 1-3/8, STEEL, BLACK OXIDE
	31	30328	1	GEAR CASE COVER
	32	26319	3	SCREW, BHSC 6-32 X .188, 18-8 SS
	33	31496	1	FAN HOUSING, 80mm X 38mm FAN, 12,000Nm TOOL
	34	32286	4	SCREW, BHSC 10-32 X .50, STAINLESS STEEL, BLACK OXIDE
	35	31317	1	LABEL, MODEL, SERIAL NUMBER AND DESCRIPTION
	36	22141	1	SAFETY LABEL
	37	26525	1	PLUG 5/16"
	38	30306	1	REACTION BAR, SINGLE ENDED, 5" OFFSET
	39	30302	1	RETAINING RING, SPIRAL, Ø3.792 X Ø 3.765 X .111
NOT SHOWN	40	24177	A/R	CLEAR SILICON, RTV 108
NOT SHOWN	41	24263	A/R	KAPTON TAPE, 1/2"
NOT SHOWN	42	28525	1	CABLE ASM., I/O ADAPTOR TO 3-SKT FEMALE CONN.

◆ ASSEMBLY INSTRUCTIONS
 ◊ SUB-ASSEMBLY

- GEARS & SPLINES: LUBRICATE WITH DOW CORNING MOLYKOTE BR2 PLUS GREASE.
- BEARINGS: LUBRICATE WITH CHEVRON SR1 GREASE
- O-RINGS: LUBRICATE WITH O-RING LUBE



DOCUMENT CONTROL
 PRINTED COPIES OF THIS DOCUMENT ARE CONSIDERED TO BE UNCONTROLLED DOCUMENTS. HOLDERS ARE RESPONSIBLE FOR VERIFYING THE CURRENT REVISION LEVEL WITH PURCHASING OR ENGINEERING PRIOR TO USE OR FABRICATION. THE CONTROLLED VERSION OF THIS DOCUMENT IS ELECTRONICALLY MAINTAINED.

PROPRIETARY AND CONFIDENTIAL
 THIS DRAWING CONTAINS INFORMATION STRICTLY CONFIDENTIAL TO ACRADYNE/AIMCO. IN THE ABSENCE OF EXPRESSED WRITTEN PERMISSION, ACRADYNE/AIMCO HAS LOANED THIS COPY WITH THE MUTUAL UNDERSTANDING THAT (A) IT WILL NOT BE USED FOR ANY PURPOSE OTHER THAN FOR THAT IN WHICH IT WAS PROVIDED, (B) THE DATA CONTAINED HEREIN WILL NOT BE DISCLOSED TO OTHERS, (C) IT WILL NOT BE REPRODUCED, AND (D) IT WILL BE RETURNED TO ACRADYNE/AIMCO IMMEDIATELY UPON DEMAND.

REVISION LEVEL	REVISION RELEASE DATE	DESCRIPTION OF CHANGES MADE TO PART	ECN #	AUTHOR/ APPROVAL

REVISION BLOCK

UNLESS OTHERWISE SPECIFIED, DIMENSIONS ARE IN INCHES
 DIMENSIONS AND TOLERANCING PER ANSI Y14.5 SURFACE ROUGHNESS PER ANSI Y14.36

BLOCK TOLERANCING PER DECIMAL:
 .X = ±.030 .XX = ±.010 .XXX = ±.005 .XXXX = ±.0005
 ANGLE = ±0° 30'

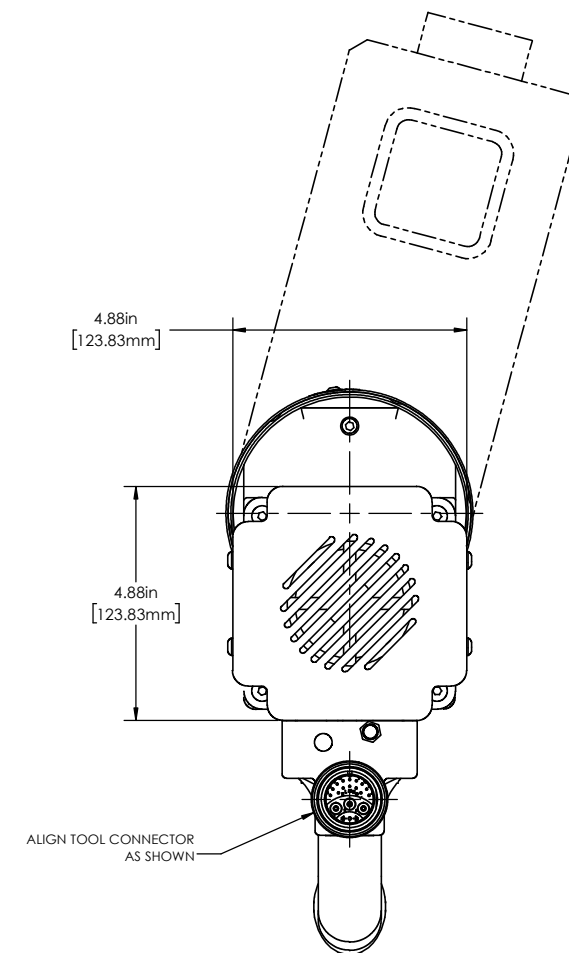
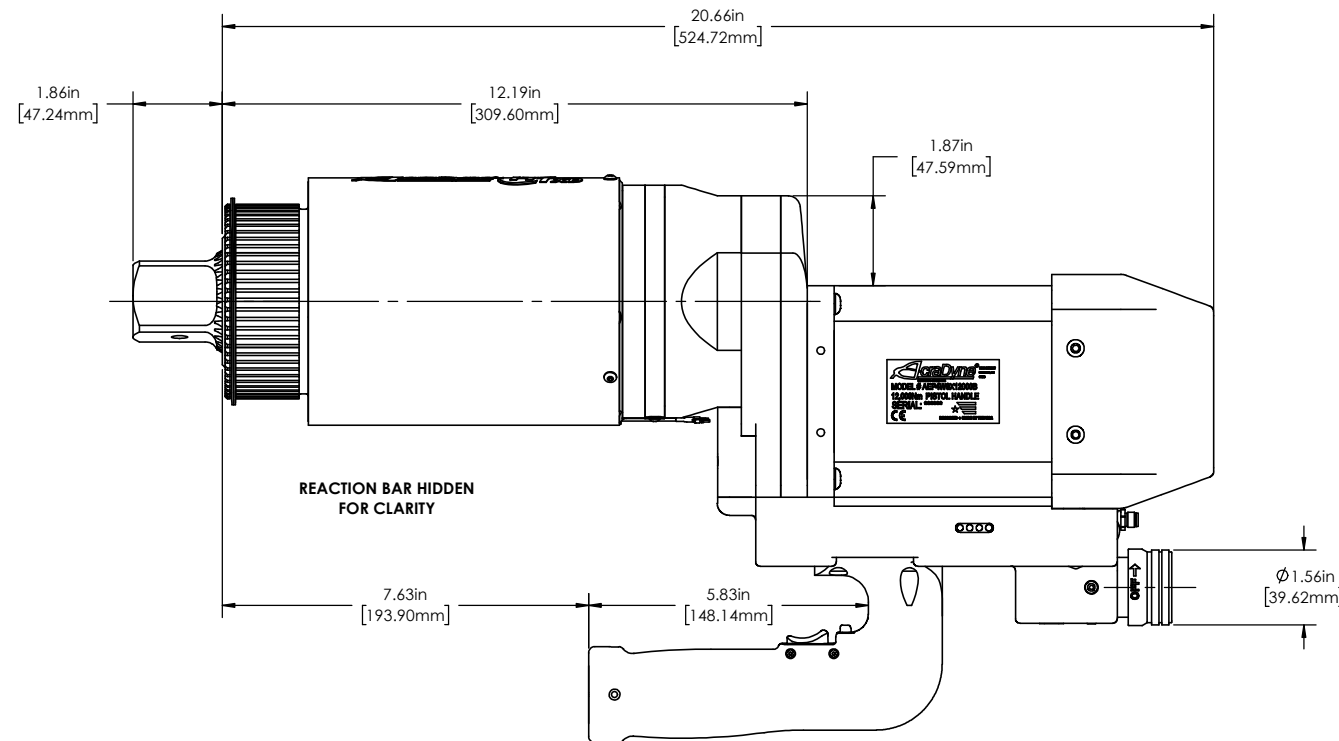
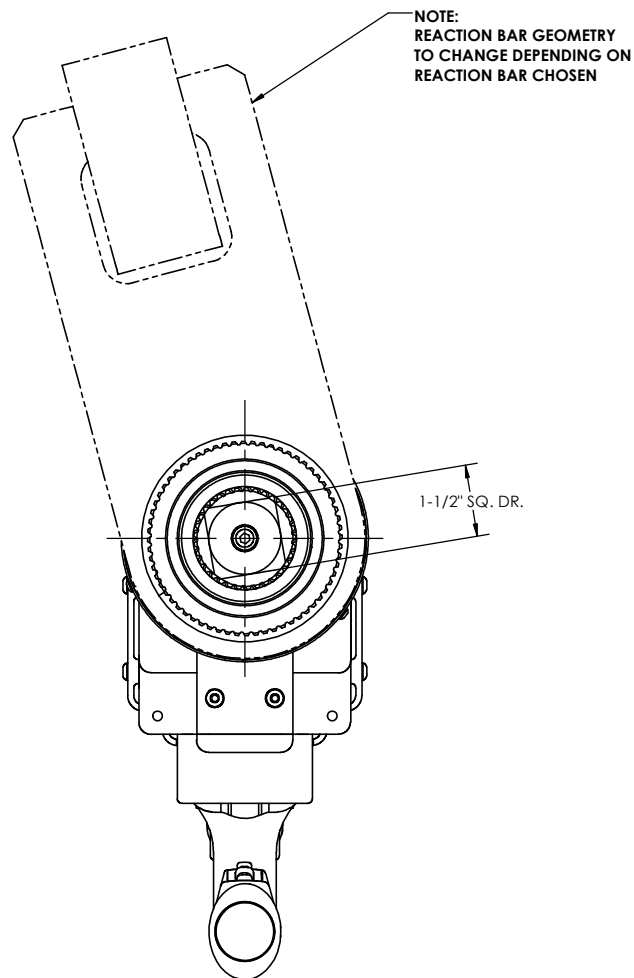
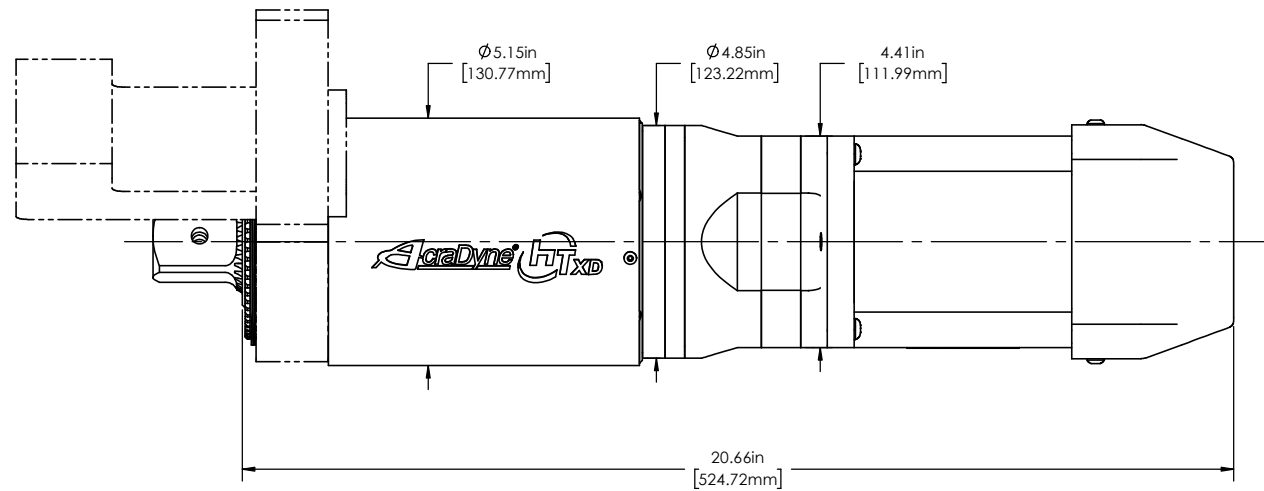
REMOVE BURRS AND SHARP EDGES: R.015 MAX MACHINE SURFACE FINISH: 125 RMS OR BETTER

DRAWINGS AND TECHNICAL DOCUMENTS CONTROLLED BY:
ACRADYNE MECHANICAL ENGINEERING

"J" HANDLE NUTRUNNER, W/SLIPRING CLUTCH AND FAN KIT, 12,000Nm XHDT SERIES

SIZE	PART / DRAWING NUMBER	REVISION
D	AEJ4W9X12000B	C

SCALE 1:2 DO NOT SCALE DRAWING SHEET 1 OF 2



DOCUMENT CONTROL
 PRINTED COPIES OF THIS DOCUMENT ARE CONSIDERED TO BE UNCONTROLLED DOCUMENTS. HOLDERS ARE RESPONSIBLE FOR VERIFYING THE CURRENT REVISION LEVEL WITH PURCHASING OR ENGINEERING PRIOR TO USE OR FABRICATION. THE CONTROLLED VERSION OF THIS DOCUMENT IS ELECTRONICALLY MAINTAINED.

PROPRIETARY AND CONFIDENTIAL
 THIS DRAWING CONTAINS INFORMATION STRICTLY CONFIDENTIAL TO ACRADYNE/AIMCO. IN THE ABSENCE OF EXPRESSED WRITTEN PERMISSION, ACRADYNE/AIMCO HAS LOANED THIS COPY WITH THE MUTUAL UNDERSTANDING THAT (A) IT WILL NOT BE USED FOR ANY PURPOSE OTHER THAN FOR THAT IN WHICH IT WAS PROVIDED, (B) THE DATA CONTAINED HEREIN WILL NOT BE DISCLOSED TO OTHERS, (C) IT WILL NOT BE REPRODUCED, AND (D) IT WILL BE RETURNED TO ACRADYNE/AIMCO IMMEDIATELY UPON DEMAND.

REVISION LEVEL	REVISION RELEASE DATE	DESCRIPTION OF CHANGES MADE TO PART	ECN #	AUTHOR/ APPROVAL

UNLESS OTHERWISE SPECIFIED, DIMENSIONS ARE IN INCHES
 DIMENSIONS AND TOLERANCING PER ANSI Y14.5
 SURFACE ROUGHNESS PER ANSI Y14.36

BLOCK TOLERANCING PER DECIMAL:
 .X = ±.030 .XX = ±.010 .XXX = ±.005 .XXXX = ±.0005
 ANGLE = ±0° 30'

REMOVE BURRS AND SHARP EDGES: R.015 MAX
 MACHINE SURFACE FINISH: 125 RMS OR BETTER

DRAWINGS AND TECHNICAL DOCUMENTS CONTROLLED BY:
ACRADYNE MECHANICAL ENGINEERING

"J" HANDLE NUTRUNNER, W/SLIPRING CLUTCH AND FAN KIT, 12,000Nm
 XDHT SERIES

SIZE D	PART / DRAWING NUMBER AEJ4W9X12000B	REVISION C
SCALE 1:2	DO NOT SCALE DRAWING	SHEET 2 OF 2