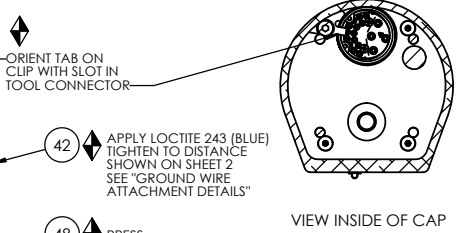
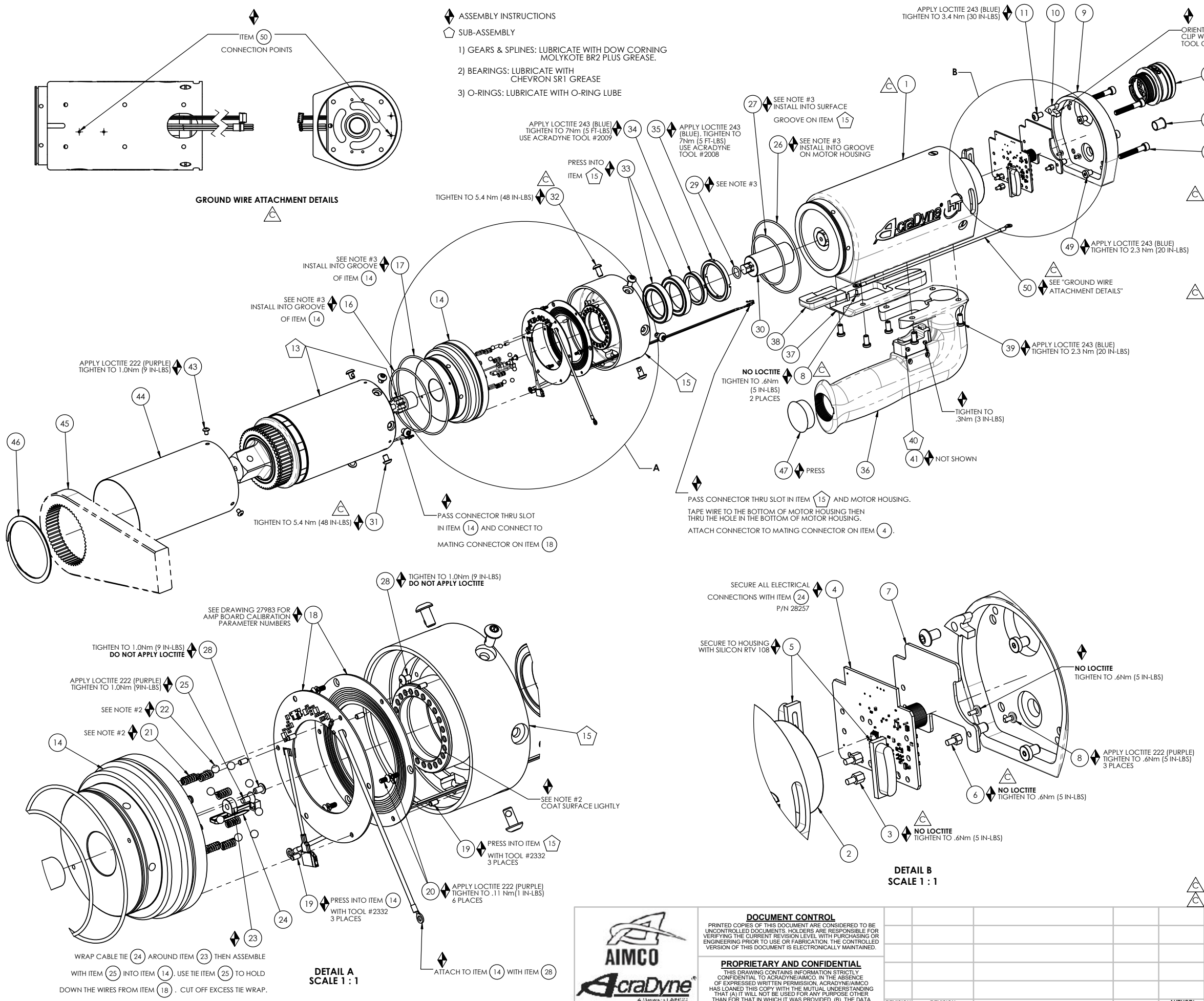


GROUND WIRE ATTACHMENT DETAILS

- ASSEMBLY INSTRUCTIONS**
- ◆ SUB-ASSEMBLY
 - 1) GEARS & SPLINES: LUBRICATE WITH DOW CORNING MOLYKOTE BR2 PLUS GREASE.
 - 2) BEARINGS: LUBRICATE WITH CHEVRON SR1 GREASE
 - 3) O-RINGS: LUBRICATE WITH O-RING LUBE



VIEW INSIDE OF CAP

NOTE: SEE WORK INSTRUCTION DOCUMENT "W2047" FOR COMPLETE ASSEMBLY INSTRUCTIONS.

COMMENTS	ITEM NO.	PART NUMBER	QTY.	DESCRIPTION
	1	26160	1	ASSY, MOTOR, 4650
	2	24840	1	FOIL SEAL 2" DIA
	3	29335	4	STANDOFF, M-F, 4-40 X 3/16, SS
	4	27797	1	TID BOARD, POPULATED W/O AMP CIRCUIT
	5	25490	2	LENS, LED, INJECTION MOLDED
	6	29337	3	STANDOFF, M-F, 4-40 X 1/8, SS
	7	29338	1	TID WIRE INSULATOR
	8	25573	7	SCREW PHP 4-40 X 3/16 18-8 SS
	9	25225	1	END GRIP CAP, HT TOOLS
	10	27063	1	TOOL CONNECTOR CLIP
	11	26015	1	SCREW, BHSC, 10-32 X .313, SS
	12	25568	4	SHC 10-32 x 1.25 BLK OXIDE
	13	28111	1	GEARBOX ASM., 320.65:1, 2500Nm, 7000-SERIES
	14	28229	1	SLIP RING INNER PLATE
	15	28278	1	SLIP RING OUTER PLATE SUB-ASM.
	16	26227	1	O-RING, MOTOR HOUSING
	17	27953	1	O-RING, 70 DURO BUNA N, -042
SEE WORK INSTRUCTIONS	18	27983.001	1	SLIP RING SET
	19	27994	6	DOWEL PIN, Ø.0938 X .1875 LG., STEEL
	20	27993	6	SCREW, FHSC, 2-56X.188, 18-8SS, PLAIN
	21	28174	8	SPRING, COMPRESSION
	22	20105	8	DETENT BALL
	23	28000	1	CABLE TIE-MOUNT
	24	28257	4	CABLE TIE, 1.65MM W X 71MM LG
	25	24940	1	SCREW, FHSC 4-40 X .25 LG., STEEL, BLACK OXIDE
	26	27714	1	O-RING 3" ID
	27	26080	1	O-RING, LED LIGHT RING COVER
	28	25745	2	SCREW, BHSC 4-40 STEEL, BLACK OXIDE
	29	26299	1	O-RING, PINION
	30	28228	1	COUPLER, PINION
	31	29303	6	SCREW, BHSC, TORX 10-32 x 1/4, STEEL
	32	29279	6	SCREW, BHSC, 10-32 x 3/8, TORX HEAD, NYLON PELL-IT, STEEL
	33	25969	2	BEARING, BALL, Ø42mm X Ø30mm X 7mm
	34	25961	1	BEARING RETAINER, INNER
	35	25962	1	BEARING RETAINER, OUTER
	36	25229	1	AXIAL HANDLE, HT TOOLS
	37	25984	1	TRANSDUCER WIRE TRAY
	38	25985	1	TRANSDUCER WIRE COVER FOR MOD 25232
	39	25569	6	SCREW LHCS 10-32 X 3/8 18-8 SS
	40	25212	1	SWITCH SUB-ASSEMBLY
NOT SHOWN	41	25582	1	HT TOOL TRIGGER CABLE
	42	25507	1	TOOL CONNECTOR ASM HERC PISTOL
	43	26319	3	SCREW, BHSC 6-32 X .188, 18-8 SS
	44	26295	1	GEAR CASE COVER, 2500 Nm
	45	26897	1	CHOOSE REACTION BAR
	46	26243	1	RETAINING RING, SPIRAL, Ø2.864 X Ø2.464 X .078
	47	24858	1	PLUG 1 3/16
	48	25579	1	PLUG 3/8"
	49	24859	3	LHSC 10-32 X 1/4 BLK OXIDE
	50	31412	1	GROUND WIRE ASSEMBLY, 18 AWG, 8000 & 9000 HT SERIES
	51	24177	A/R	RTV 108 TRANSLUCENT

DETAIL A SCALE 1:1

DETAIL B SCALE 1:1



DOCUMENT CONTROL
 PRINTED COPIES OF THIS DOCUMENT ARE CONSIDERED TO BE UNCONTROLLED DOCUMENTS. HOLDERS ARE RESPONSIBLE FOR VERIFYING THE CURRENT REVISION LEVEL WITH PURCHASING OR ENGINEERING PRIOR TO USE OR FABRICATION. THE CONTROLLED VERSION OF THIS DOCUMENT IS ELECTRONICALLY MAINTAINED.

PROPRIETARY AND CONFIDENTIAL
 THIS DRAWING CONTAINS INFORMATION STRICTLY CONFIDENTIAL TO ACRADYNE/AIMCO. IN THE ABSENCE OF EXPRESSED WRITTEN PERMISSION, ACRADYNE/AIMCO HAS LOANED THIS COPY WITH THE MUTUAL UNDERSTANDING THAT (A) IT WILL NOT BE USED FOR ANY PURPOSE OTHER THAN FOR THAT IN WHICH IT WAS PROVIDED, (B) THE DATA CONTAINED HEREIN WILL NOT BE DISCLOSED TO OTHERS, (C) IT WILL NOT BE REPRODUCED, AND (D) IT WILL BE RETURNED TO ACRADYNE/AIMCO IMMEDIATELY UPON DEMAND.

REVISION LEVEL	REVISION RELEASE DATE	DESCRIPTION OF CHANGES MADE TO PART	ECN #	AUTHOR / APPROVAL

UNLESS OTHERWISE SPECIFIED, DIMENSIONS ARE IN INCHES
 DIMENSIONS AND TOLERANCING PER ANSI Y14.5 SURFACE ROUGHNESS PER ANSI Y14.36

BLOCK TOLERANCING PER DECIMAL:
 .X = ±.030 .XX = ±.010 .XXX = ±.005 .XXXX = ±.0005
 ANGLE = ±.30°

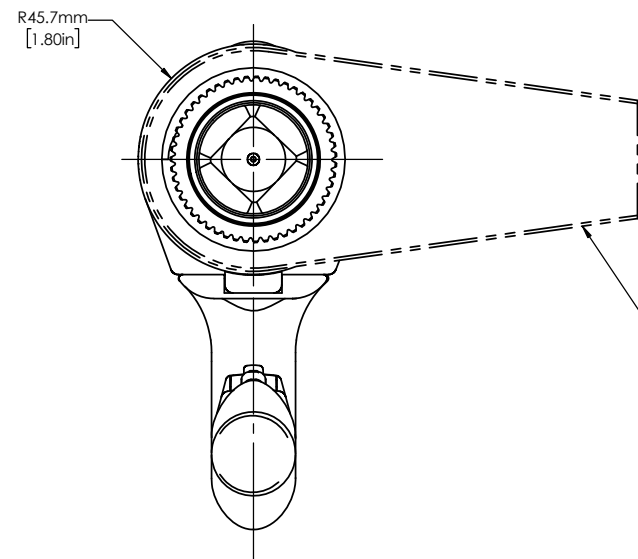
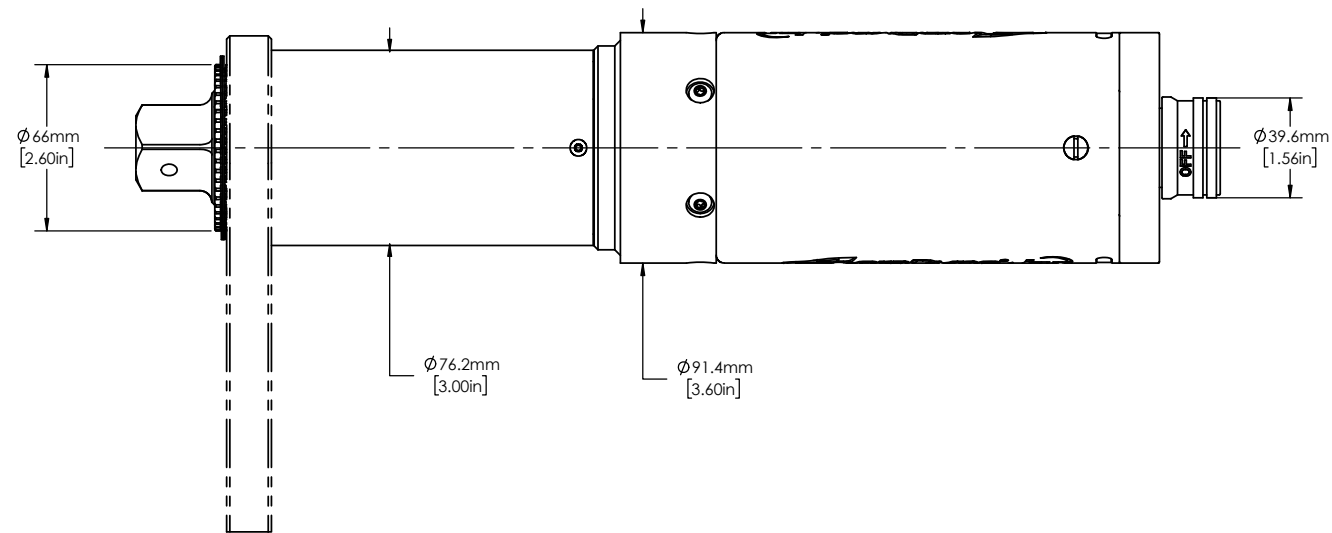
REMOVE BURRS AND SHARP EDGES: R.015 MAX MACHINE SURFACE FINISH: 125 RMS OR BETTER

DRAWINGS AND TECHNICAL DOCUMENTS CONTROLLED BY:
ACRADYNE MECHANICAL ENGINEERING

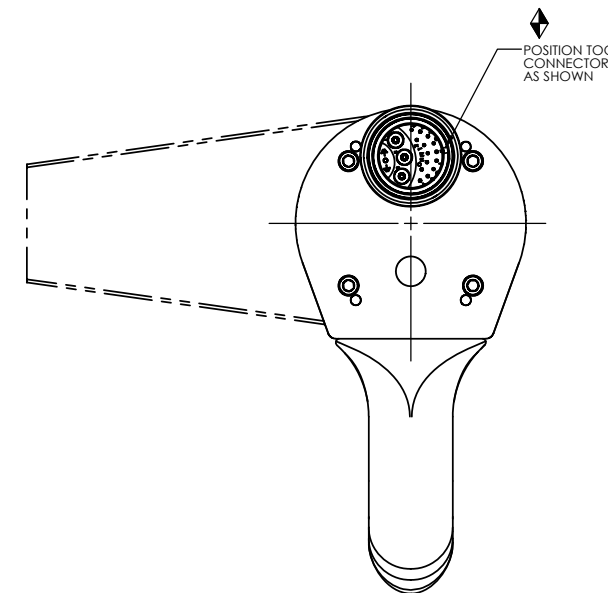
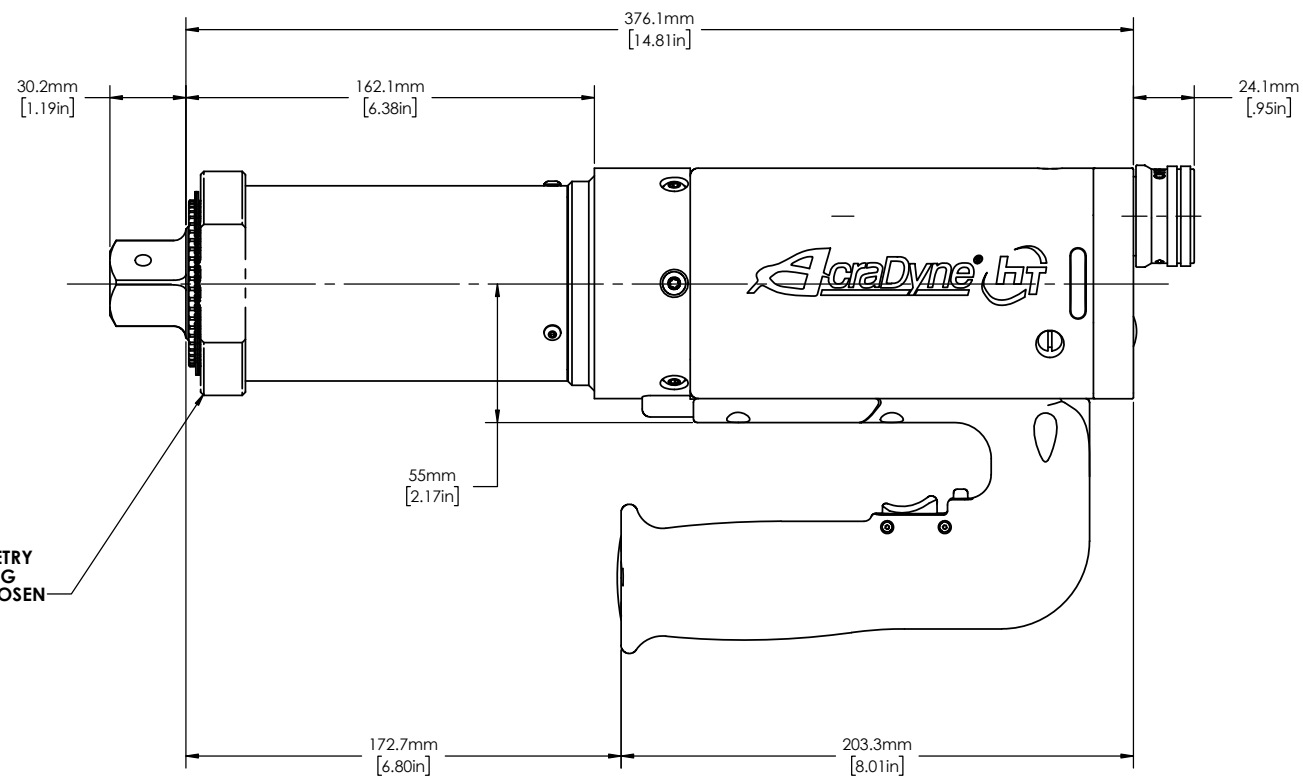
"J" HANDLE NUTRUNNER W/SLIP RING CLUTCH
 8000-SERIES

SIZE **D** PART / DRAWING NUMBER **AEJ4W872800B** REVISION **C**

SCALE 1:8 DO NOT SCALE DRAWING SHEET 1 OF 2



NOTE:
REACTION BAR GEOMETRY
TO CHANGE DEPENDING
ON REACTION BAR CHOSEN



DOCUMENT CONTROL
PRINTED COPIES OF THIS DOCUMENT ARE CONSIDERED TO BE UNCONTROLLED DOCUMENTS. HOLDERS ARE RESPONSIBLE FOR VERIFYING THE CURRENT REVISION LEVEL WITH PURCHASING OR ENGINEERING PRIOR TO USE OR FABRICATION. THE CONTROLLED VERSION OF THIS DOCUMENT IS ELECTRONICALLY MAINTAINED.

PROPRIETARY AND CONFIDENTIAL
THIS DRAWING CONTAINS INFORMATION STRICTLY CONFIDENTIAL TO ACRADYNE/AIMCO. IN THE ABSENCE OF EXPRESSED WRITTEN PERMISSION, ACRADYNE/AIMCO HAS LOANED THIS COPY WITH THE MUTUAL UNDERSTANDING THAT (A) IT WILL NOT BE USED FOR ANY PURPOSE OTHER THAN FOR THAT IN WHICH IT WAS PROVIDED, (B) THE DATA CONTAINED HEREIN WILL NOT BE DISCLOSED TO OTHERS, (C) IT WILL NOT BE REPRODUCED, AND (D) IT WILL BE RETURNED TO ACRADYNE/AIMCO IMMEDIATELY UPON DEMAND.

REVISION LEVEL	REVISION RELEASE DATE	DESCRIPTION OF CHANGES MADE TO PART	ECN #	AUTHOR/ APPROVAL

UNLESS OTHERWISE SPECIFIED,
DIMENSIONS ARE IN INCHES
DIMENSIONS AND TOLERANCING PER ANSI Y14.5
SURFACE ROUGHNESS PER ANSI Y14.36

BLOCK TOLERANCING PER DECIMAL:
.X = ±.030 .XX = ±.010 .XXX = ±.005 .XXXX = ±.0005
ANGLE = ±0° 30'

REMOVE BURRS AND SHARP EDGES: R.015 MAX
MACHINE SURFACE FINISH: 125 RMS OR BETTER

DRAWINGS AND TECHNICAL DOCUMENTS CONTROLLED BY:
ACRADYNE MECHANICAL ENGINEERING

**"J" HANDLE NUTRUNNER
W/SLIP RING CLUTCH
8000-SERIES**

SIZE D	PART / DRAWING NUMBER AEJ4W872800B	REVISION C
SCALE 1:8	DO NOT SCALE DRAWING	SHEET 2 OF 2