

COMMENTS	ITEM NO.	PART NUMBER	QTY.	DESCRIPTION
	1	31682	1	MOTOR, GEARBOX & FAN, OFFSET GEARBOX ASSEMBLY, 12KNm TOOL
	2	27797	1	TID BOARD, POPULATED W/O AMP CIRCUIT
	3	31417	1	MALE RECEPTACLE CABLE ASSY, 3-PIN, 6.56FT, 2-PIN CONNECTOR
	4	31284	1	TID ENCLOSURE, 17,000Nm
	5	31285	1	TID ENCLOSURE COVER, 17,000Nm
	6	31290	1	TOOL CONNECTOR ASSEMBLY, 17,000Nm
	7	31289	1	TID WIRE INSULATOR, MODIFIED FOR 17KNm TOOL
	8	31411	16	LIGHTPIPE, LED, PANEL MOUNT, CONVEX, .250" LENGTH
	9	31496	1	FAN HOUSING, 80mm X 38mm FAN, 12,000Nm TOOL
	10	29337	3	STANDOFF, M-F, 4-40 X 1/8, SS
	11	31333	4	STANDOFF, M-F, #4-40 X 3/8, SS
	12	25745	4	SCREW, BHSC 4-40 STEEL, BLACK OXIDE
	13	29284	8	SCREW, BHSC, 10-32 X 1/2, TORX HEAD, NYLON PELL-IT, STEEL
	14	30298	4	SCREW, BHSC 10-32 X 5/8, STEEL, BLACK OXIDE
	15	32286	4	SCREW, BHSC 10-32 X .50, STAINLESS STEEL, BLACK OXIDE
	16	25573	4	SCREW PHP 4-40 X 3/16 18-8 SS
	17	25574	1	STANDOFF M-F, 4-40x1/4, 3/16 HEX, SS
	18	25177	2	SCREW, BHSC 8-32 X 1/2, BLK OXIDE
	19	29993	2	SCREW, BHSC 8-32 X 1.375, STEEL, BLACK OXIDE
	20	31288	1	TRAY, MOTOR WIRES-TO-TID, 17,000Nm
	21	31319	2	SCREW, SHC, 8-32 X 1-1/8, STEEL, BLACK OXIDE
	22	26239	2	"J" HANDLE PLUG
	23	25212	2	SWITCH SUB-ASSEMBLY
	24	26276	2	"D" / "J" HANDLE
	25	31292	2	MOUNTING PLATE, J-HANDLE, ANGLED
	26	28431	1	O-RING, Ø1/16 X Ø1 3/16, BUNA-N
	27	31336	8	SCREW, SHC 10-32 X .75, STEEL
	28	27247	2	SCREW, SET, 1/2-13 x .375, STEEL
	29	31287	1	LIFTING PLATE, XDHT
	30	29026	3	SCREW, BHSC 1/4-20 X 5/8, STEEL, BLACK OXIDE
NOT SHOWN	31	31296	1	TRIGGER CABLE, 15'LG., 6P TO 6P
NOT SHOWN	32	31200	1	TRIGGER CABLE, 15'LG., 6P TO 3P
	33	31317	1	LABEL, MODEL, SERIAL NUMBER AND DESCRIPTION
	34	22141	1	SAFETY LABEL
	35	PTRF-023	4	SCREW, SHC, 6-32 X .25", BLACK OXIDE
	36	30328	1	GEAR CASE COVER
	37	26319	3	SCREW, BHSC 6-32 X .188, 18-8 SS
	38	30306	1	REACTION BAR, SINGLE ENDED, 5" OFFSET
	39	30302	1	RETAINING RING, SPIRAL, Ø3.792 X Ø 3.765 X .111
	40	30734	1	CONNECTOR, 2 POS, MALE PINS, MOLEX 70107-0001
NOT SHOWN	41	30738	2	CRIMP TERMINAL, CONNECTOR, MALE, 22-24 AWG
NOT SHOWN	42	24263	A/R	KAPTON TAPE, 1/2"
NOT SHOWN	43	24177	A/R	CLEAR SILICON, RTV 108
NOT SHOWN	44	28525	1	CABLE ASM., I/O ADAPTOR TO 3-SKT FEMALE CONN.
NOT SHOWN	45	50058	A/R	RTV 732, BLACK

- ◆ ASSEMBLY INSTRUCTIONS
- ◊ SUB-ASSEMBLY

- 1) GEARS & SPLINES: LUBRICATE WITH DOW CORNING MOLYKOTE BR2 PLUS GREASE.
- 2) BEARINGS: LUBRICATE WITH CHEVRON SR1 GREASE
- 3) O-RINGS: LUBRICATE WITH O-RING LUBE



**DOCUMENT CONTROL**  
 PRINTED COPIES OF THIS DOCUMENT ARE CONSIDERED TO BE UNCONTROLLED DOCUMENTS. HOLDERS ARE RESPONSIBLE FOR VERIFYING THE CURRENT REVISION LEVEL WITH PURCHASING OR ENGINEERING PRIOR TO USE OR FABRICATION. THE CONTROLLED VERSION OF THIS DOCUMENT IS ELECTRONICALLY MAINTAINED.

**PROPRIETARY AND CONFIDENTIAL**  
 THIS DRAWING CONTAINS INFORMATION STRICTLY CONFIDENTIAL TO ACRADYNE/AIMCO. IN THE ABSENCE OF EXPRESSED WRITTEN PERMISSION, ACRADYNE/AIMCO HAS LOANED THIS COPY WITH THE MUTUAL UNDERSTANDING THAT (A) IT WILL NOT BE USED FOR ANY PURPOSE OTHER THAN FOR THAT IN WHICH IT WAS PROVIDED, (B) THE DATA CONTAINED HEREIN WILL NOT BE DISCLOSED TO OTHERS, (C) IT WILL NOT BE REPRODUCED, AND (D) IT WILL BE RETURNED TO ACRADYNE/AIMCO IMMEDIATELY UPON DEMAND.

REVISION LEVEL	REVISION RELEASE DATE	DESCRIPTION OF CHANGES MADE TO PART	ECN #	AUTHOR/ APPROVAL

**UNLESS OTHERWISE SPECIFIED, DIMENSIONS ARE IN INCHES**  
 DIMENSIONS AND TOLERANCING PER ANSI Y14.5  
 SURFACE ROUGHNESS PER ANSI Y14.36

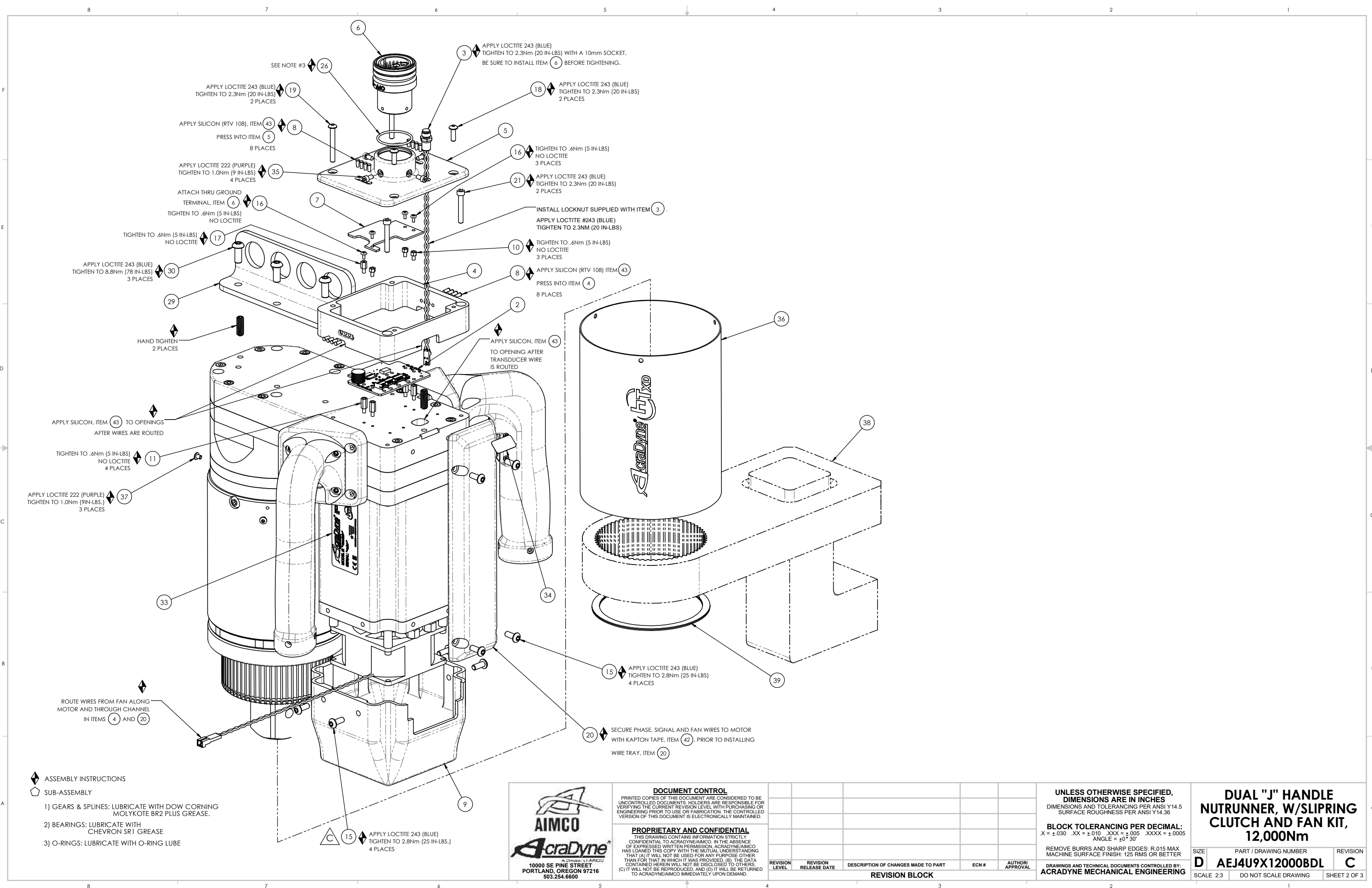
**BLOCK TOLERANCING PER DECIMAL:**  
 .X = ±.030 .XX = ±.010 .XXX = ±.005 .XXXX = ±.0005  
 ANGLE = ±0° 30'

REMOVE BURRS AND SHARP EDGES: R.015 MAX  
 MACHINE SURFACE FINISH: 125 RMS OR BETTER

DRAWINGS AND TECHNICAL DOCUMENTS CONTROLLED BY:  
**ACRADYNE MECHANICAL ENGINEERING**

**DUAL "J" HANDLE NUTRUNNER, W/SLIPRING CLUTCH AND FAN KIT, 12,000Nm**

SIZE	PART / DRAWING NUMBER	REVISION
<b>D</b>	<b>AEJ4U9X12000BDL</b>	<b>C</b>
SCALE 3:4	DO NOT SCALE DRAWING	SHEET 1 OF 3



**DOCUMENT CONTROL**  
 PRINTED COPIES OF THIS DOCUMENT ARE CONSIDERED TO BE UNCONTROLLED DOCUMENTS. HOLDERS ARE RESPONSIBLE FOR VERIFYING THE CURRENT REVISION LEVEL WITH PURCHASING OR ENGINEERING PRIOR TO USE OR FABRICATION. THE CONTROLLED VERSION OF THIS DOCUMENT IS ELECTRONICALLY MAINTAINED.

**PROPRIETARY AND CONFIDENTIAL**  
 THIS DRAWING CONTAINS INFORMATION STRICTLY CONFIDENTIAL TO ACRADYNE/AIMCO. IN THE ABSENCE OF EXPRESSED WRITTEN PERMISSION, ACRADYNE/AIMCO HAS LOANED THIS COPY WITH THE MUTUAL UNDERSTANDING THAT (A) IT WILL NOT BE USED FOR ANY PURPOSE OTHER THAN FOR THAT IN WHICH IT WAS PROVIDED, (B) THE DATA CONTAINED HEREIN WILL NOT BE DISCLOSED TO OTHERS, (C) IT WILL NOT BE REPRODUCED, AND (D) IT WILL BE RETURNED TO ACRADYNE/AIMCO IMMEDIATELY UPON DEMAND.

REVISION LEVEL	REVISION RELEASE DATE	DESCRIPTION OF CHANGES MADE TO PART	ECN #	AUTHOR/ APPROVAL

**UNLESS OTHERWISE SPECIFIED, DIMENSIONS ARE IN INCHES**  
 DIMENSIONS AND TOLERANCING PER ANSI Y14.5 SURFACE ROUGHNESS PER ANSI Y14.36

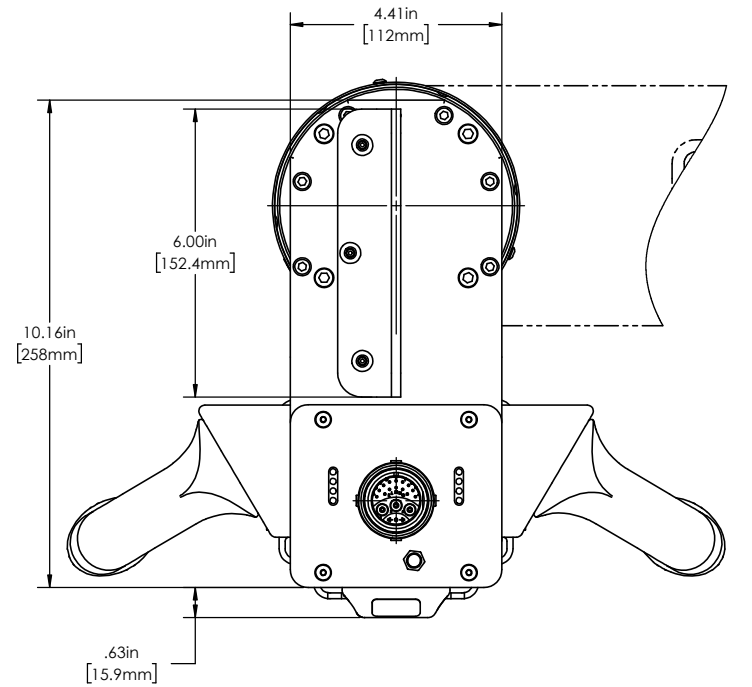
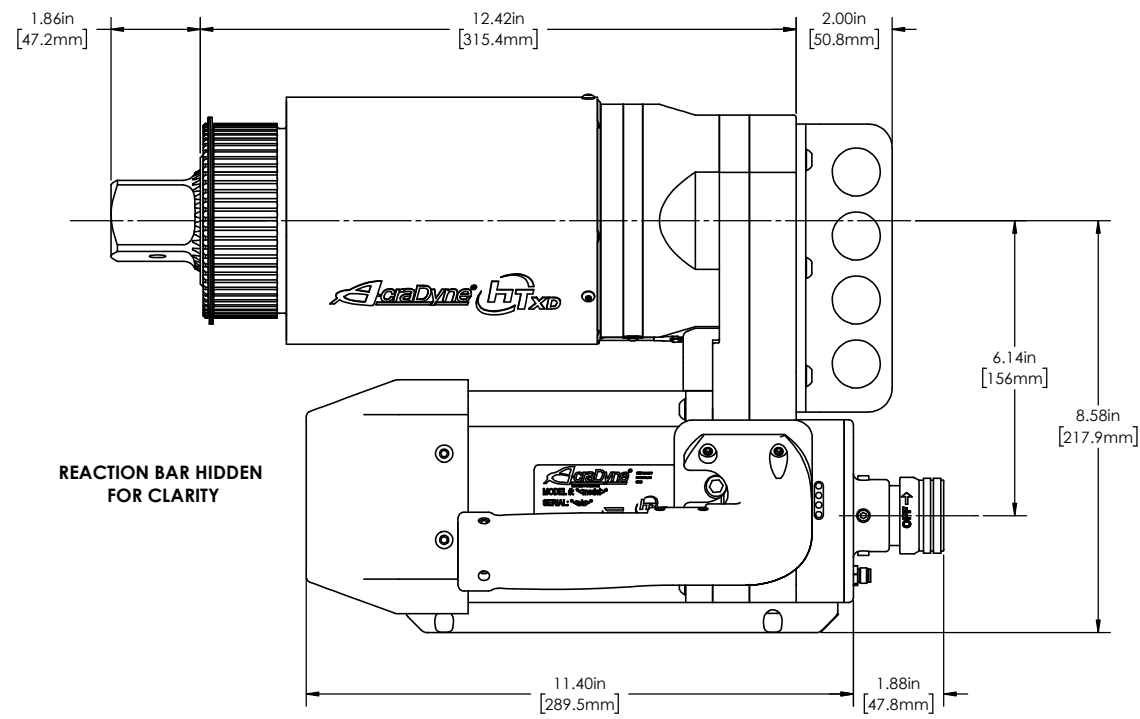
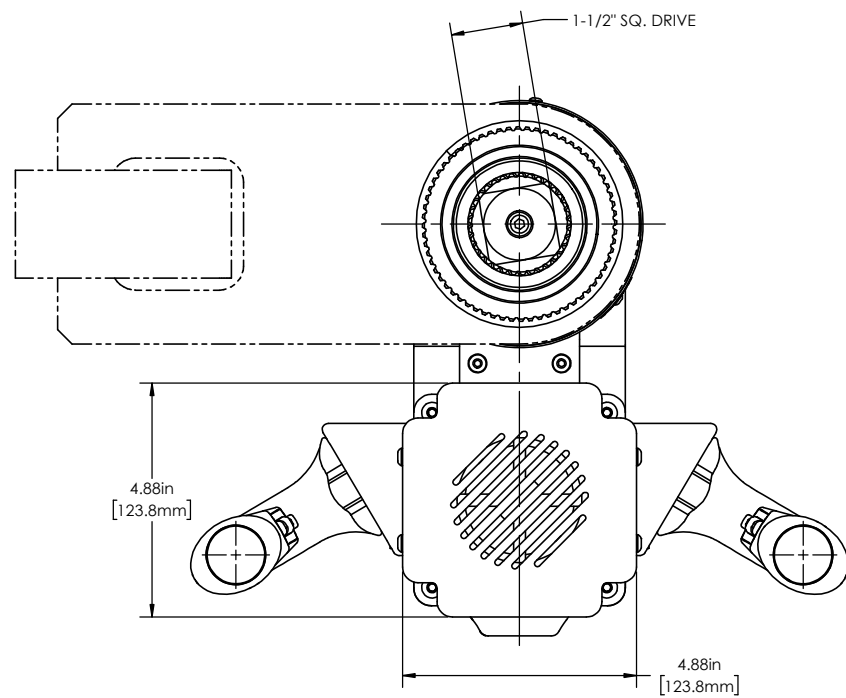
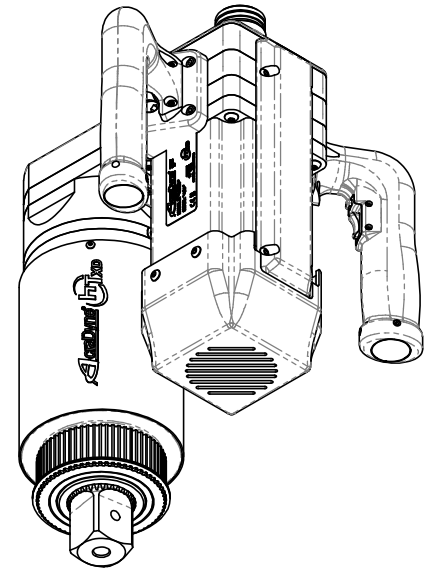
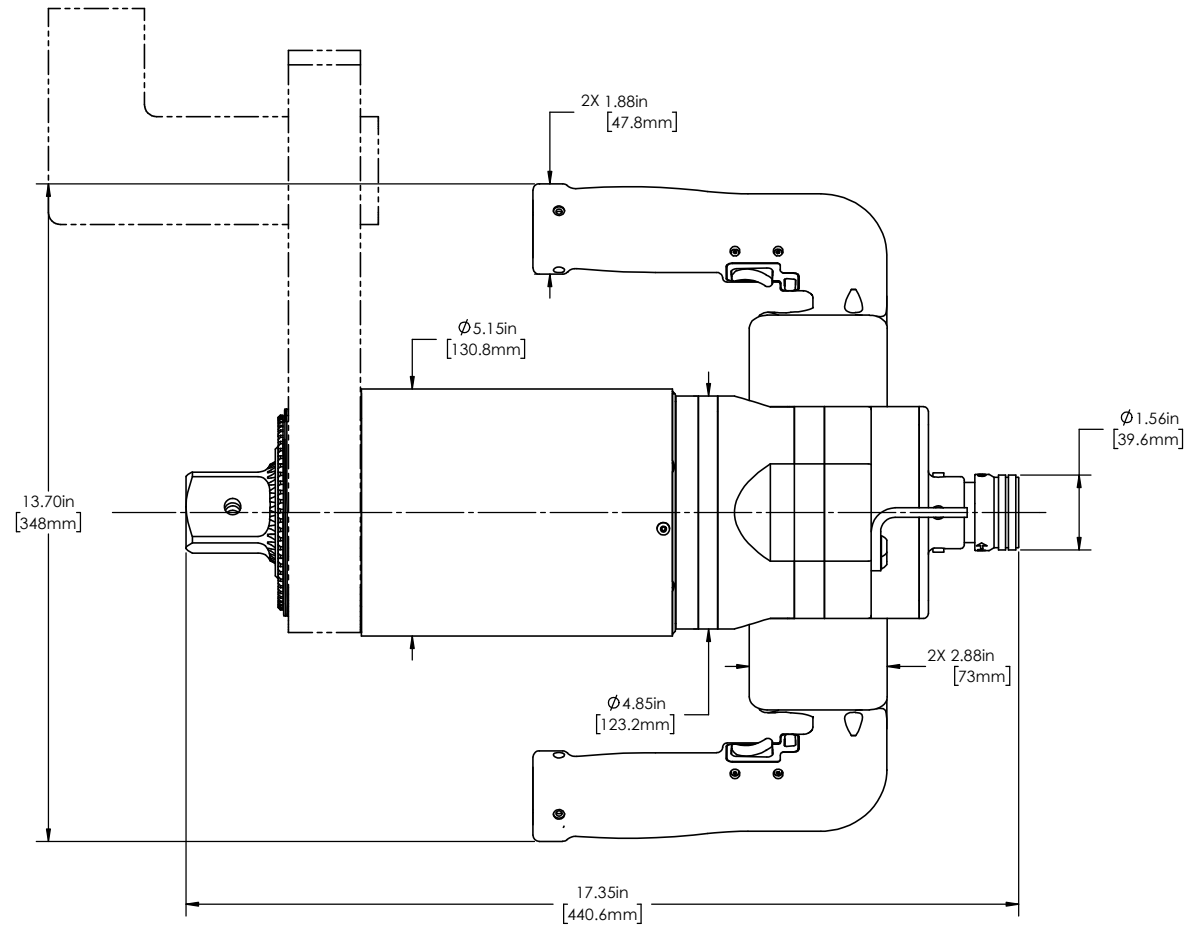
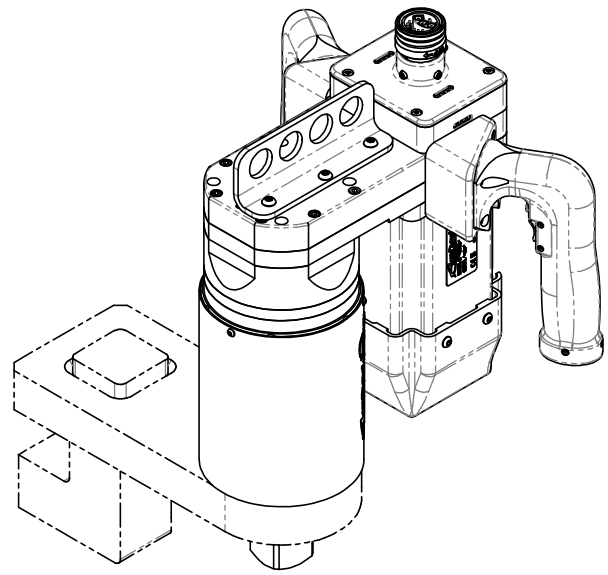
**BLOCK TOLERANCING PER DECIMAL:**  
 .X = ±.030 .XX = ±.010 .XXX = ±.005 .XXXX = ±.0005  
 ANGLE = ±0° 30'

REMOVE BURRS AND SHARP EDGES: R.015 MAX MACHINE SURFACE FINISH: 125 RMS OR BETTER

DRAWINGS AND TECHNICAL DOCUMENTS CONTROLLED BY:  
**ACRADYNE MECHANICAL ENGINEERING**

**DUAL "J" HANDLE NUTRUNNER, W/SLIPRING CLUTCH AND FAN KIT, 12,000Nm**

SIZE	PART / DRAWING NUMBER	REVISION
<b>D</b>	<b>AEJ4U9X12000BDL</b>	<b>C</b>
SCALE: 2:3	DO NOT SCALE DRAWING	SHEET 2 OF 3



**DOCUMENT CONTROL**  
 PRINTED COPIES OF THIS DOCUMENT ARE CONSIDERED TO BE UNCONTROLLED DOCUMENTS. HOLDERS ARE RESPONSIBLE FOR VERIFYING THE CURRENT REVISION LEVEL WITH PURCHASING OR ENGINEERING PRIOR TO USE OR FABRICATION. THE CONTROLLED VERSION OF THIS DOCUMENT IS ELECTRONICALLY MAINTAINED.

**PROPRIETARY AND CONFIDENTIAL**  
 THIS DRAWING CONTAINS INFORMATION STRICTLY CONFIDENTIAL TO ACRADYNE/AIMCO. IN THE ABSENCE OF EXPRESSED WRITTEN PERMISSION, ACRADYNE/AIMCO HAS LOANED THIS COPY WITH THE MUTUAL UNDERSTANDING THAT (A) IT WILL NOT BE USED FOR ANY PURPOSE OTHER THAN FOR THAT IN WHICH IT WAS PROVIDED, (B) THE DATA CONTAINED HEREIN WILL NOT BE DISCLOSED TO OTHERS, (C) IT WILL NOT BE REPRODUCED, AND (D) IT WILL BE RETURNED TO ACRADYNE/AIMCO IMMEDIATELY UPON DEMAND.

REVISION LEVEL	REVISION RELEASE DATE	DESCRIPTION OF CHANGES MADE TO PART	ECN #	AUTHOR/ APPROVAL

**UNLESS OTHERWISE SPECIFIED, DIMENSIONS ARE IN INCHES**  
 DIMENSIONS AND TOLERANCING PER ANSI Y14.5  
 SURFACE ROUGHNESS PER ANSI Y14.36

**BLOCK TOLERANCING PER DECIMAL:**  
 X = ±.030 XX = ±.010 XXX = ±.005 .XXXX = ±.0005  
 ANGLE = ±0° 30'

REMOVE BURRS AND SHARP EDGES: R.015 MAX  
 MACHINE SURFACE FINISH: 125 RMS OR BETTER

DRAWINGS AND TECHNICAL DOCUMENTS CONTROLLED BY:  
**ACRADYNE MECHANICAL ENGINEERING**

**DUAL "J" HANDLE NUTRUNNER, W/SLIPRING CLUTCH AND FAN KIT, 12,000Nm**

SIZE	PART / DRAWING NUMBER	REVISION
<b>D</b>	<b>AEJ4U9X1200BDL</b>	<b>C</b>

SCALE: 1:2 DO NOT SCALE DRAWING SHEET 3 OF 3