

COMMENTS	ITEM NO.	PART NUMBER	QTY.	DESCRIPTION
	1	SEE CHART	1	MOTOR, GEARBOX/CLUTCH & OFFSET GEARBOX ASSEMBLY
	2	31292	2	MOUNTING PLATE, J-HANDLE, ANGLED
	3	26276	2	"D" / "J" HANDLE
	4	31336	4	SCREW, SHC 10-32 x .75, STEEL
	5	25168	4	SCREW, SHC, 10-32 x 5/8, STEEL, BLACK OXIDE
	6	27247	2	SCREW, SET, 1/2-13 x .375, STEEL
	7	26239	2	"J" HANDLE PLUG
	8	25745	4	SCREW, BHSC 4-40 STEEL, BLACK OXIDE
	9	29284	11	SCREW, BHSC, 10-32 X 1/2, TORX HEAD, NYLON PELL-IT, STEEL
	10	25212	2	SWITCH SUB-ASSEMBLY
	11	31284	1	TID ENCLOSURE, 17,000Nm
	12	32218	1	HANGER BRACKET, 5000Nm
	13	29322	1	TOOL CONNECTOR ASSEMBLY
	14	26789	4	SCREW, SHC, 10-32 x 7/8, STEEL, BLACK OXIDE
	15	PTRF-023	4	SCREW, SHC, 6-32 X .25", BLACK OXIDE
	16	31319	2	SCREW, SHC, 8-32 x 1-1/8, STEEL, BLACK OXIDE
	17	29993	2	SCREW, BHSC 8-32 X 1.375, STEEL, BLACK OXIDE
	18	25177	2	SCREW, BHSC 8-32 X 1/2, BLK OXIDE
	19	25569	6	SCREW LHCS 10-32 X 3/8 18-8 SS
	20	29026	3	SCREW, BHSC 1/4-20 X 5/8, STEEL, BLACK OXIDE
	21	31411	16	LIGHTPIPE, LED, PANEL MOUNT, CONVEX, .250" LENGTH
	22	25564	3	WASHER SHIM .093THK .25ID .375OD
	23	27797	1	TID BOARD, POPULATED W/O AMP CIRCUIT
	24	32223	1	TID ENCLOSURE COVER, NO TOOL CONN., 5000Nm
	25	25982	1	TRANSDUCER WIRE TRAY
	26	32222	1	TOOL CONNECTOR HOUSING
	27	31333	5	STANDOFF, M-F, #4-40 x 3/8, SS
	28	29337	3	STANDOFF, M-F, 4-40 X 1/8, SS
	29	31289	1	TID WIRE INSULATOR, MODIFIED FOR 17KNm TOOL
	30	25573	4	SCREW PHP 4-40 X 3/16 18-8 SS
	31	28203	1	HT TOOL TRANSDUCER SLEEVE
	32	25218	3	SCREW, BHSC, 6-32 X 5/16, SS
	33	25274	1	REACTION BAR, STANDARD
NOT SHOWN	34	31296	1	TRIGGER CABLE, 15'LG., 6P TO 6P
NOT SHOWN	35	31200	1	TRIGGER CABLE, 15'LG., 6P TO 3P
NOT SHOWN	36	24177	A/R	CLEAR SILICON, RTV 108
NOT SHOWN	37	50058	A/R	RTV 732, BLACK
	38	32373	1	JUMPER CABLE ASM., 8 PIN, MOTOR SIGNAL WIRES
	39	31711	2	HEADER CONNECTOR, 4-POS., .079" (2mm) GOLD
NOT SHOWN	40	24213	A/R	HEATSHRINK, 1/2" BLACK

TOOL MODEL NO.	MOTOR, GEARBOX/CLUTCH & OFFSET GEARBOX ASM.	SQ. DRIVE OUTPUT
AEJ4U885000B1DL001	32230	1"
AEJ4U885000BDL001	32375	1-1/2"



DOCUMENT CONTROL
 PRINTED COPIES OF THIS DOCUMENT ARE CONSIDERED TO BE UNCONTROLLED DOCUMENTS. HOLDERS ARE RESPONSIBLE FOR VERIFYING THE CURRENT REVISION LEVEL WITH PURCHASING OR ENGINEERING PRIOR TO USE OR FABRICATION. THE CONTROLLED VERSION OF THIS DOCUMENT IS ELECTRONICALLY MAINTAINED.

PROPRIETARY AND CONFIDENTIAL
 THIS DRAWING CONTAINS INFORMATION STRICTLY CONFIDENTIAL TO ACRADYNE/AIMCO. IN THE ABSENCE OF EXPRESSED WRITTEN PERMISSION, ACRADYNE/AIMCO HAS LOANED THIS COPY WITH THE MUTUAL UNDERSTANDING THAT (A) IT WILL NOT BE USED FOR ANY PURPOSE OTHER THAN FOR THAT IN WHICH IT WAS PROVIDED, (B) THE DATA CONTAINED HEREIN WILL NOT BE DISCLOSED TO OTHERS, (C) IT WILL NOT BE REPRODUCED, AND (D) IT WILL BE RETURNED TO ACRADYNE/AIMCO IMMEDIATELY UPON DEMAND.

REVISION LEVEL	REVISION RELEASE DATE	DESCRIPTION OF CHANGES MADE TO PART	ECN #	AUTHOR/ APPROVAL
REVISION BLOCK				

UNLESS OTHERWISE SPECIFIED, DIMENSIONS ARE IN INCHES
 DIMENSIONS AND TOLERANCING PER ANSI Y14.5 SURFACE ROUGHNESS PER ANSI Y14.36

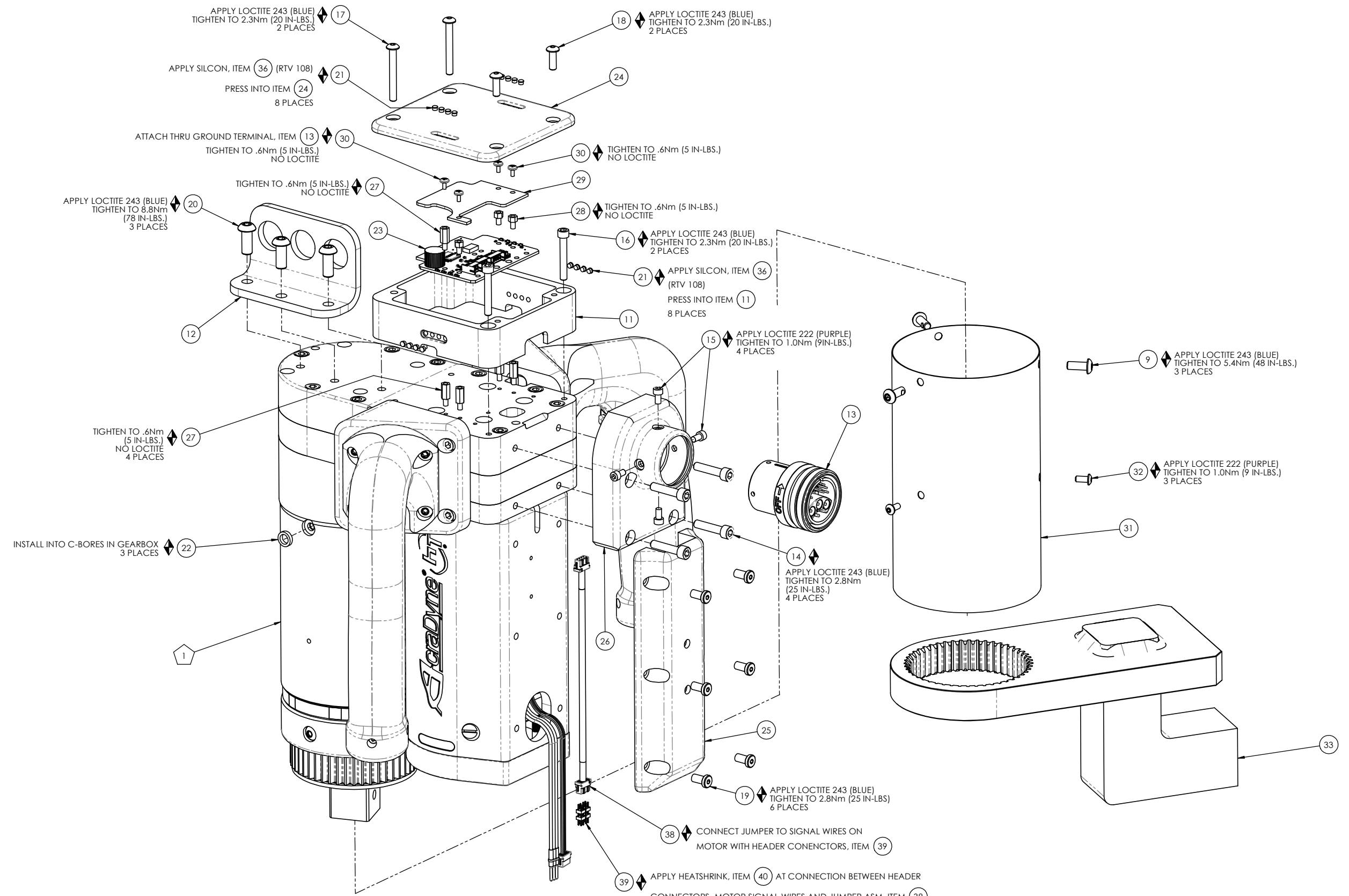
BLOCK TOLERANCING PER DECIMAL:
 X = ±.030 XX = ±.010 XXX = ±.005 XXXX = ±.0005
 ANGLE = ±0° 30'

REMOVE BURRS AND SHARP EDGES: R.015 MAX MACHINE SURFACE FINISH: 125 RMS OR BETTER

DRAWINGS AND TECHNICAL DOCUMENTS CONTROLLED BY:
ACRADYNE MECHANICAL ENGINEERING

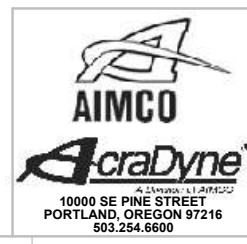
DUAL LEVER J-HANDLE, U-SHAPED NUTRUNNER, REAR EXIT, 5000Nm 8000-SERIES

SIZE	PART / DRAWING NUMBER	REVISION
D	AEJ4U885000B_DL001	A
SCALE: 4:5	DO NOT SCALE DRAWING	SHEET 1 OF 3



◆ ASSEMBLY INSTRUCTIONS
 ◡ SUB-ASSEMBLY

- 1) GEARS & SPLINES: LUBRICATE WITH DOW CORNING MOLYKOTE BR2 PLUS GREASE.
- 2) BEARINGS: LUBRICATE WITH CHEVRON SR1 GREASE
- 3) O-RINGS: LUBRICATE WITH O-RING LUBE



DOCUMENT CONTROL
 PRINTED COPIES OF THIS DOCUMENT ARE CONSIDERED TO BE UNCONTROLLED DOCUMENTS. HOLDERS ARE RESPONSIBLE FOR VERIFYING THE CURRENT REVISION LEVEL WITH PURCHASING OR ENGINEERING PRIOR TO USE OR FABRICATION. THE CONTROLLED VERSION OF THIS DOCUMENT IS ELECTRONICALLY MAINTAINED.

PROPRIETARY AND CONFIDENTIAL
 THIS DRAWING CONTAINS INFORMATION STRICTLY CONFIDENTIAL TO ACRADYNE/AIMCO. IN THE ABSENCE OF EXPRESSED WRITTEN PERMISSION, ACRADYNE/AIMCO HAS LOANED THIS COPY WITH THE MUTUAL UNDERSTANDING THAT (A) IT WILL NOT BE USED FOR ANY PURPOSE OTHER THAN FOR THAT IN WHICH IT WAS PROVIDED, (B) THE DATA CONTAINED HEREIN WILL NOT BE DISCLOSED TO OTHERS, (C) IT WILL NOT BE REPRODUCED, AND (D) IT WILL BE RETURNED TO ACRADYNE/AIMCO IMMEDIATELY UPON DEMAND.

REVISION LEVEL	REVISION RELEASE DATE	DESCRIPTION OF CHANGES MADE TO PART	ECN #	AUTHOR/ APPROVAL

UNLESS OTHERWISE SPECIFIED, DIMENSIONS ARE IN INCHES
 DIMENSIONS AND TOLERANCING PER ANSI Y14.5
 SURFACE ROUGHNESS PER ANSI Y14.36

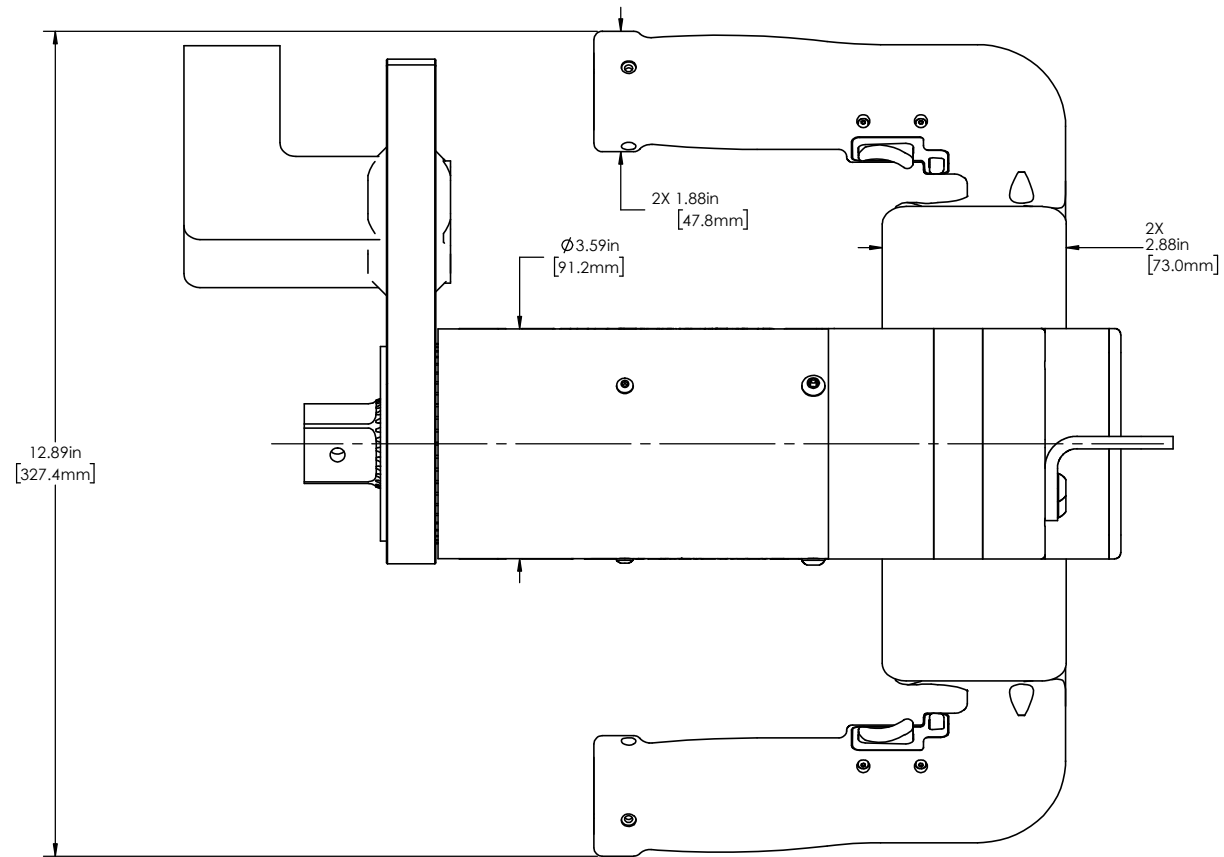
BLOCK TOLERANCING PER DECIMAL:
 .X = ±.030 .XX = ±.010 .XXX = ±.005 .XXXX = ±.0005
 ANGLE = ±0° 30'

REMOVE BURRS AND SHARP EDGES: R.015 MAX
 MACHINE SURFACE FINISH: 125 RMS OR BETTER

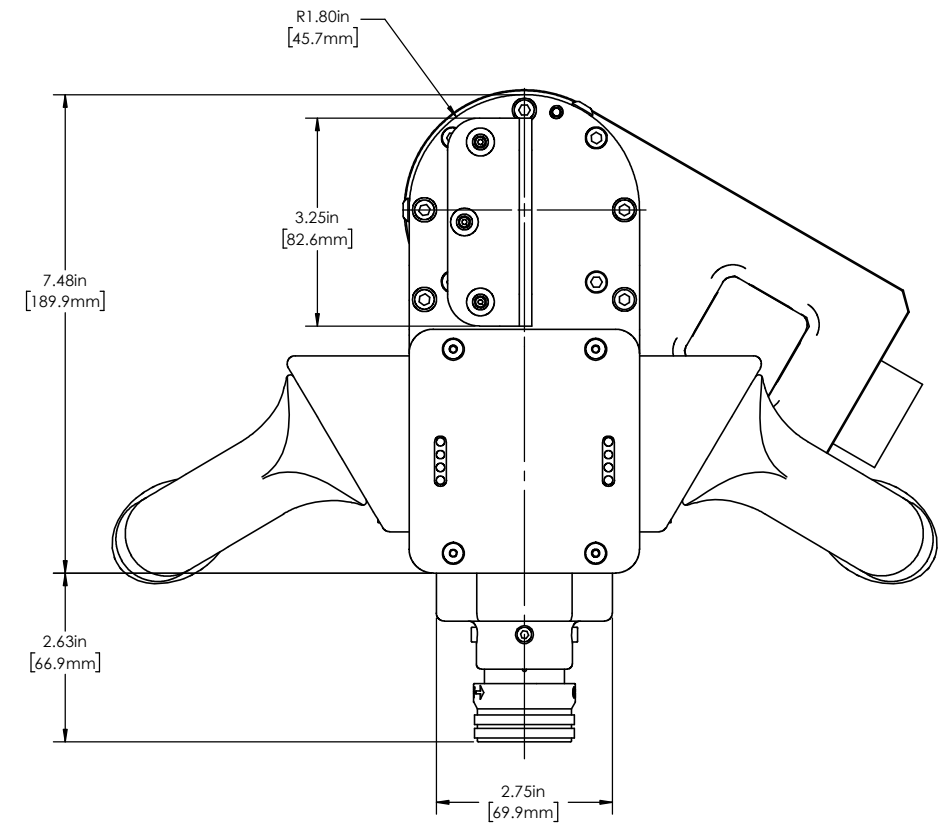
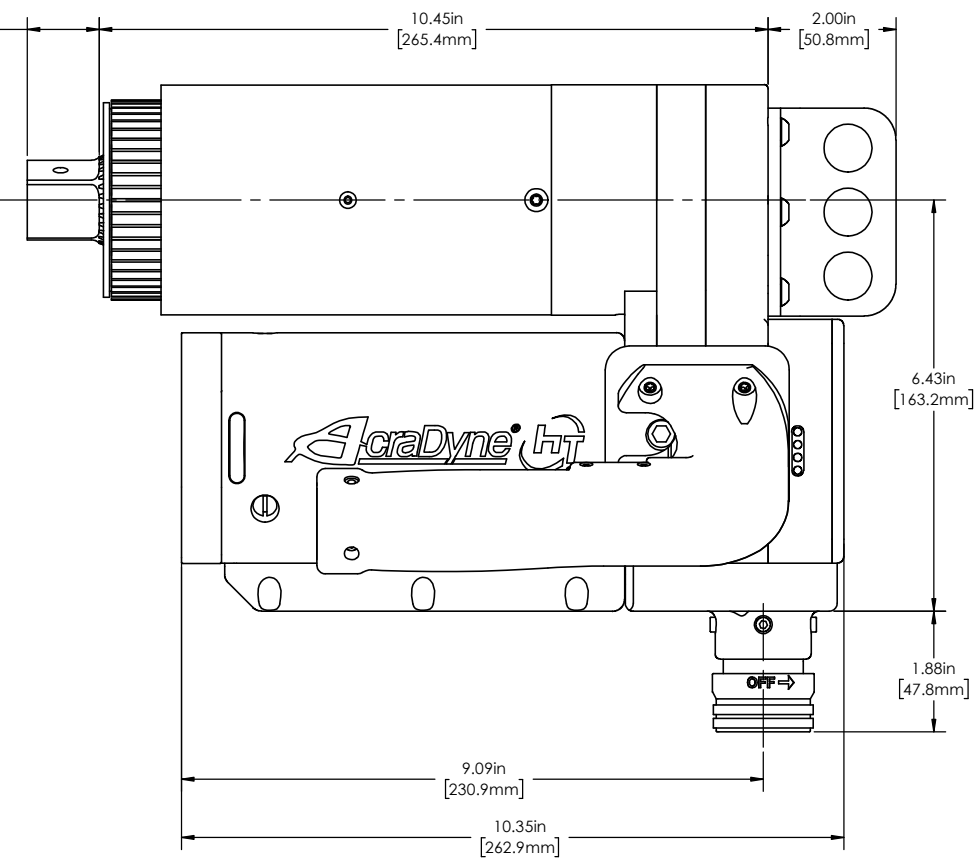
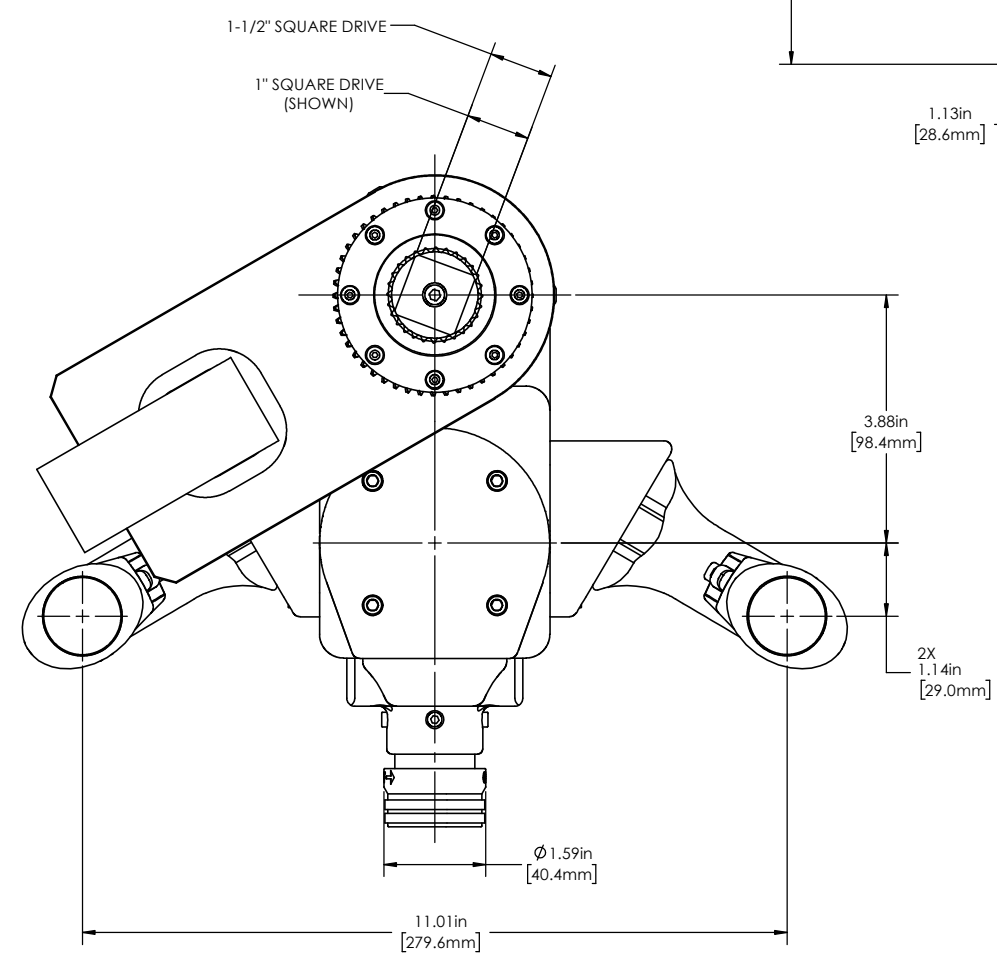
DRAWINGS AND TECHNICAL DOCUMENTS CONTROLLED BY:
ACRADYNE MECHANICAL ENGINEERING

DUAL LEVER J-HANDLE, U-SHAPED NUTRUNNER, REAR EXIT, 5000Nm, 8000-SERIES

SIZE	PART / DRAWING NUMBER	REVISION
D	AEJ4U885000B_DL001	A
SCALE: 4:5	DO NOT SCALE DRAWING	SHEET 2 OF 3



MODEL NO.	SQUARE DRIVE
AEJ4U885000BDL.001	1-1/2"
AEJ4U885000B1DL.001	1"



DOCUMENT CONTROL
 PRINTED COPIES OF THIS DOCUMENT ARE CONSIDERED TO BE UNCONTROLLED DOCUMENTS. HOLDERS ARE RESPONSIBLE FOR VERIFYING THE CURRENT REVISION LEVEL WITH PURCHASING OR ENGINEERING PRIOR TO USE OR FABRICATION. THE CONTROLLED VERSION OF THIS DOCUMENT IS ELECTRONICALLY MAINTAINED.

PROPRIETARY AND CONFIDENTIAL
 THIS DRAWING CONTAINS INFORMATION STRICTLY CONFIDENTIAL TO ACRADYNE/AIMCO. IN THE ABSENCE OF EXPRESSED WRITTEN PERMISSION, ACRADYNE/AIMCO HAS LOANED THIS COPY WITH THE MUTUAL UNDERSTANDING THAT (A) IT WILL NOT BE USED FOR ANY PURPOSE OTHER THAN FOR THAT IN WHICH IT WAS PROVIDED, (B) THE DATA CONTAINED HEREIN WILL NOT BE DISCLOSED TO OTHERS, (C) IT WILL NOT BE REPRODUCED, AND (D) IT WILL BE RETURNED TO ACRADYNE/AIMCO IMMEDIATELY UPON DEMAND.

REVISION LEVEL	REVISION RELEASE DATE	DESCRIPTION OF CHANGES MADE TO PART	ECN #	AUTHOR/ APPROVAL

UNLESS OTHERWISE SPECIFIED, DIMENSIONS ARE IN INCHES
 DIMENSIONS AND TOLERANCING PER ANSI Y14.5
 SURFACE ROUGHNESS PER ANSI Y14.36

BLOCK TOLERANCING PER DECIMAL:
 .X = ±.030 .XX = ±.010 .XXX = ±.005 .XXXX = ±.0005
 ANGLE = ±0° 30'

REMOVE BURRS AND SHARP EDGES: R.015 MAX
 MACHINE SURFACE FINISH: 125 RMS OR BETTER

DRAWINGS AND TECHNICAL DOCUMENTS CONTROLLED BY:
ACRADYNE MECHANICAL ENGINEERING

DUAL LEVER J-HANDLE, U-SHAPED NUTRUNNER, REAR EXIT, 5000Nm 8000-SERIES

SIZE	PART / DRAWING NUMBER	REVISION
D	AEJ4U885000B_DL.001	A
SCALE: 2:3	DO NOT SCALE DRAWING	SHEET 3 OF 3