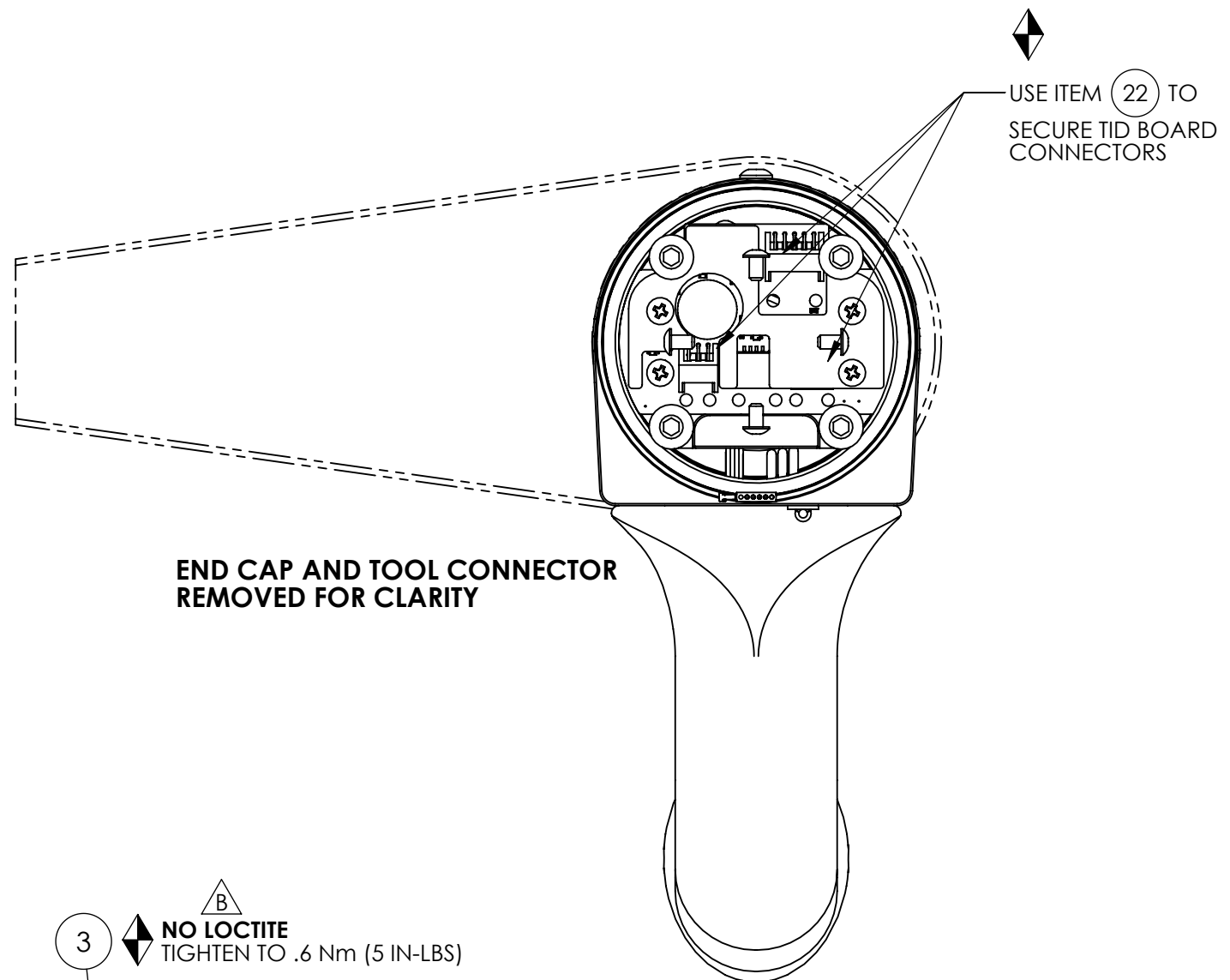
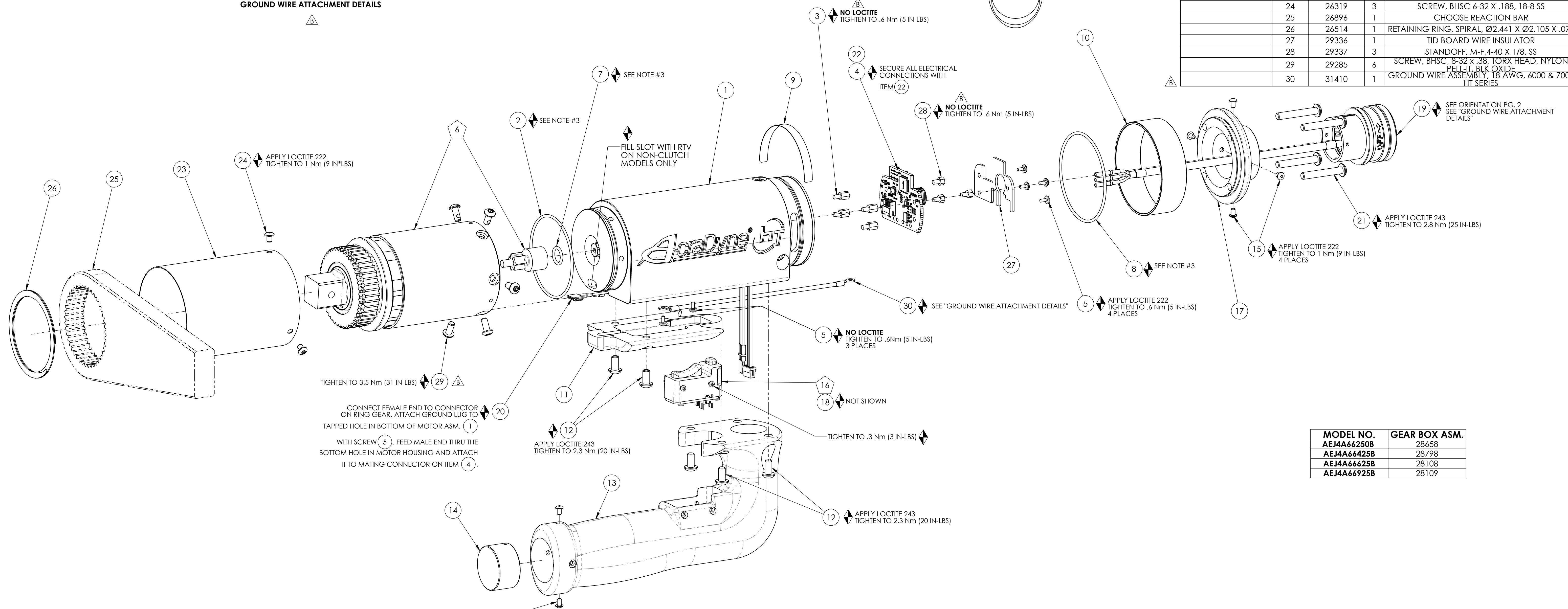


GROUND WIRE ATTACHMENT DETAILS



END CAP AND TOOL CONNECTOR REMOVED FOR CLARITY

COMMENTS	ITEM NO.	PART NUMBER	QTY.	DESCRIPTION
	1	26481	1	MOTOR ASM.
	2	26488	1	O-RING, MOTOR HOUSING
	3	25574	4	STANDOFF M-F, 4-40x1/4, 3/16 HEX, SS
	4	27727	1	TID BOARD, POPULATED W/AMP
	5	25573	8	SCREW PHP 4-40 X 3/16 18-8 SS
	6	SEE CHART	1	GEAR BOX ASM.
	7	26299	1	O-RING, PINION
	8	26487	1	O-RING, LED COVER
	9	20534	1	SERIAL/MODEL LABEL
	10	26483	1	LED COVER
	11	26296	1	WIRE TRAY, "J" HANDLE
	12	26206	6	SCREW, BHSC 10-32 X .375, STEEL
	13	26276	1	"D" / "J" HANDLE
	14	26239	1	"J" HANDLE PLUG
	15	25745	6	SCREW, BHSC 4-40 STEEL, BLACK OXIDE
	16	25212	1	SWITCH SUB-ASSEMBLY
	17	26462	1	END CAP, "J" HANDLE
NOT SHOWN	18	26526	1	CABLE, TRIGGER, GEN 4
	19	26280	1	TOOL CONNECTOR ASM., "J" HANDLE
	20	28211	1	(4) LINE MALE/FEMALE JUMPER ASM.
	21	27401	4	SCREW, BHSC 10-32 X 1.25, STEEL, BLK OXIDE
NOT SHOWN	22	27464	A/R	TWISTED WAXED LINEN TWINE
	23	26495	1	GEAR CASE COVER
	24	26319	3	SCREW, BHSC 6-32 X .188, 18-8 SS
	25	26896	1	CHOOSE REACTION BAR
	26	26514	1	RETAINING RING, SPIRAL, Ø2.441 X Ø2.105 X .078
	27	29336	1	TID BOARD WIRE INSULATOR
	28	29337	3	STANDOFF, M-F, 4-40 X 1/8, SS
	29	29285	6	SCREW, BHSC, 8-32 X .38, TORX HEAD, NYLON PELL-IT, BLK OXIDE
	30	31410	1	GROUND WIRE ASSEMBLY, 18 AWG, 6000 & 7000 HT SERIES



24 APPLY LOCTITE 222 TIGHTEN TO 1 Nm (9 IN-LBS)

FILL SLOT WITH RTV ON NON-CLUTCH MODELS ONLY

3 NO LOCTITE TIGHTEN TO .6 Nm (5 IN-LBS)

4 SECURE ALL ELECTRICAL CONNECTIONS WITH ITEM 22

28 NO LOCTITE TIGHTEN TO .6 Nm (5 IN-LBS)

21 APPLY LOCTITE 243 TIGHTEN TO 2.3 Nm (20 IN-LBS)

15 APPLY LOCTITE 222 TIGHTEN TO 1 Nm (9 IN-LBS) 4 PLACES

5 APPLY LOCTITE 222 TIGHTEN TO .6 Nm (5 IN-LBS) 4 PLACES

5 NO LOCTITE TIGHTEN TO .6Nm (5 IN-LBS) 3 PLACES

TIGHTEN TO 3.5 Nm (31 IN-LBS)

CONNECT FEMALE END TO CONNECTOR ON RING GEAR. ATTACH GROUND LUG TO TAPPED HOLE IN BOTTOM OF MOTOR ASM.

WITH SCREW 5, FEED MALE END THRU THE BOTTOM HOLE IN MOTOR HOUSING AND ATTACH IT TO MATING CONNECTOR ON ITEM 4.

12 APPLY LOCTITE 243 TIGHTEN TO 2.3 Nm (20 IN-LBS)

TIGHTEN TO .3 Nm (3 IN-LBS)

12 APPLY LOCTITE 243 TIGHTEN TO 2.3 Nm (20 IN-LBS)

15 APPLY LOCTITE 222 TIGHTEN TO 1 Nm (9 IN-LBS) 2 PLACES

- ASSEMBLY INSTRUCTIONS
- SUB-ASSEMBLY

- GEARS & SPLINES: LUBRICATE WITH DOW CORNING MOLYKOTE BR2 PLUS GREASE.
- BEARINGS: LUBRICATE WITH CHEVRON SR1 GREASE
- O-RINGS: LUBRICATE WITH O-RING LUBE



DOCUMENT CONTROL
PRINTED COPIES OF THIS DOCUMENT ARE CONSIDERED TO BE UNCONTROLLED DOCUMENTS. HOLDERS ARE RESPONSIBLE FOR VERIFYING THE CURRENT REVISION LEVEL WITH PURCHASING OR ENGINEERING PRIOR TO USE OR FABRICATION. THE CONTROLLED VERSION OF THIS DOCUMENT IS ELECTRONICALLY MAINTAINED.

PROPRIETARY AND CONFIDENTIAL
THIS DRAWING CONTAINS INFORMATION STRICTLY CONFIDENTIAL TO ACRADYNE/AIMCO. IN THE ABSENCE OF EXPRESSED WRITTEN PERMISSION, ACRADYNE/AIMCO HAS LOANED THIS COPY WITH THE MUTUAL UNDERSTANDING THAT (A) IT WILL NOT BE USED FOR ANY PURPOSE OTHER THAN FOR THAT IN WHICH IT WAS PROVIDED, (B) THE DATA CONTAINED HEREIN WILL NOT BE DISCLOSED TO OTHERS, (C) IT WILL NOT BE REPRODUCED, AND (D) IT WILL BE RETURNED TO ACRADYNE/AIMCO IMMEDIATELY UPON DEMAND.

REVISION LEVEL	REVISION RELEASE DATE	DESCRIPTION OF CHANGES MADE TO PART	ECN #	AUTHOR/ APPROVAL

UNLESS OTHERWISE SPECIFIED, DIMENSIONS ARE IN INCHES
DIMENSIONS AND TOLERANCING PER ANSI Y14.5 SURFACE ROUGHNESS PER ANSI Y14.36

BLOCK TOLERANCING PER DECIMAL:
X = ±.030 XX = ±.010 XXX = ±.005 XXXX = ±.0005 ANGLE = ±0°30'

REMOVE BURRS AND SHARP EDGES: R.015 MAX MACHINE SURFACE FINISH: 125 RMS OR BETTER

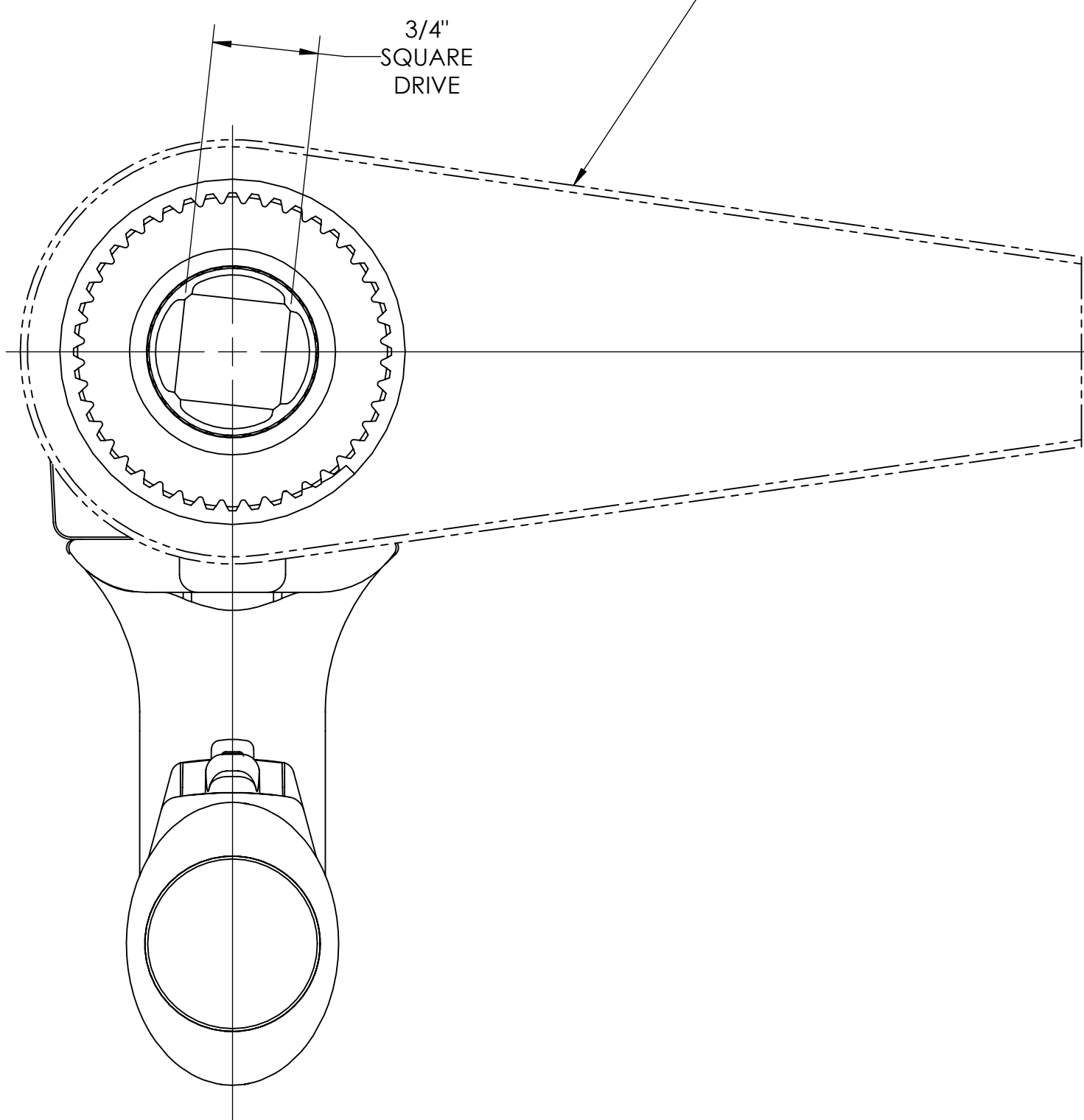
DRAWINGS AND TECHNICAL DOCUMENTS CONTROLLED BY:
ACRADYNE MECHANICAL ENGINEERING

"J" HANDLE NUTRUNNER 6000 SERIES

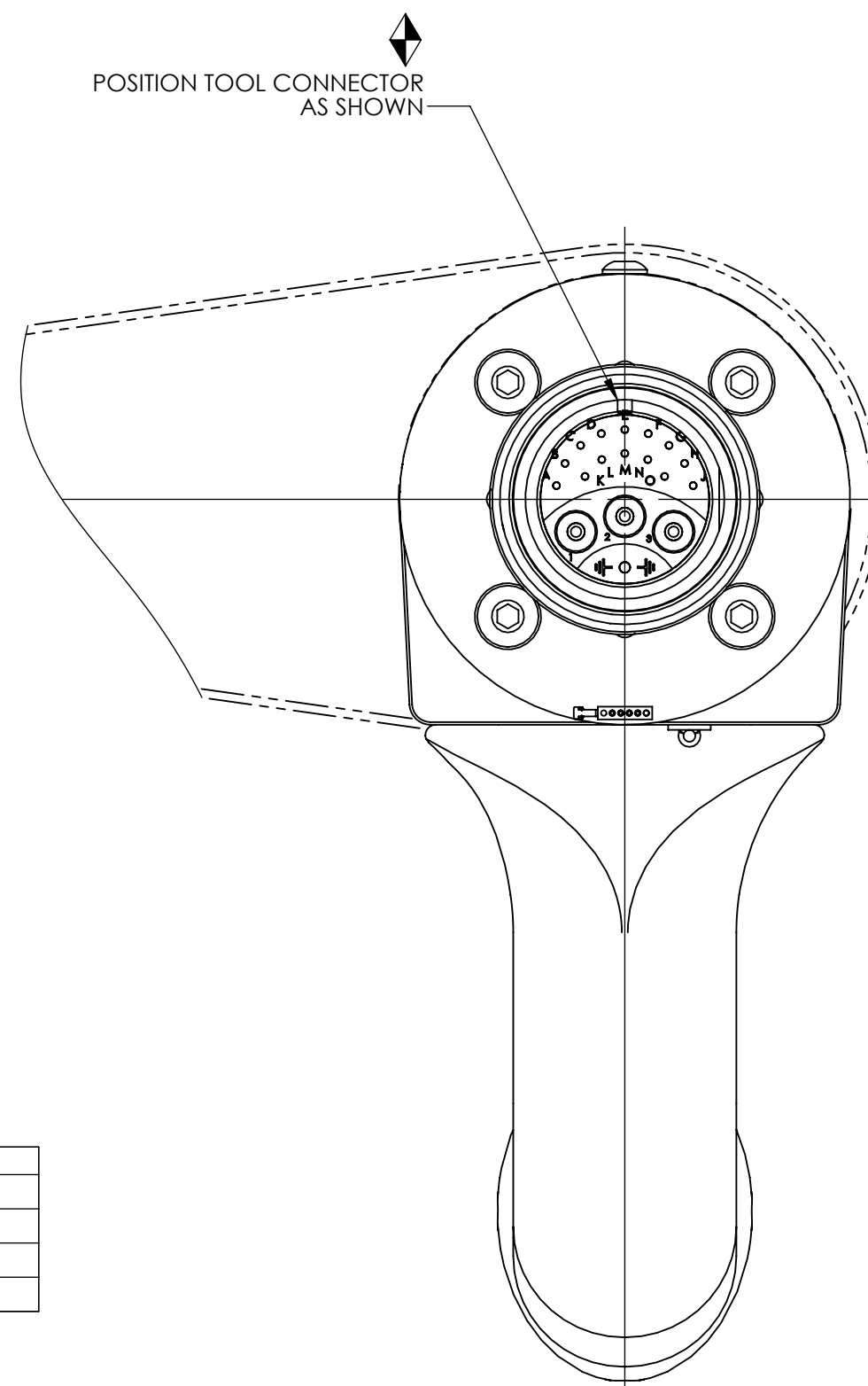
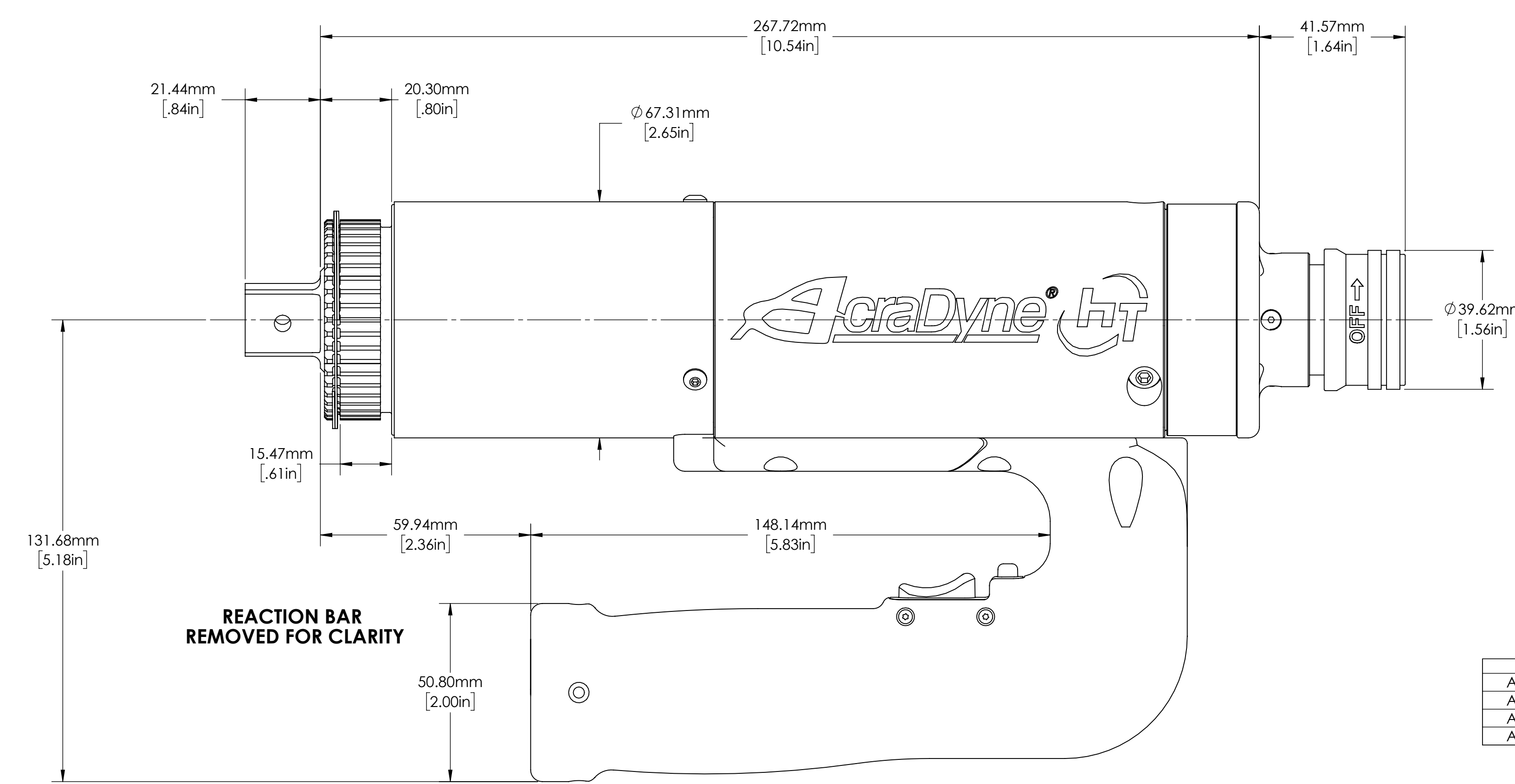
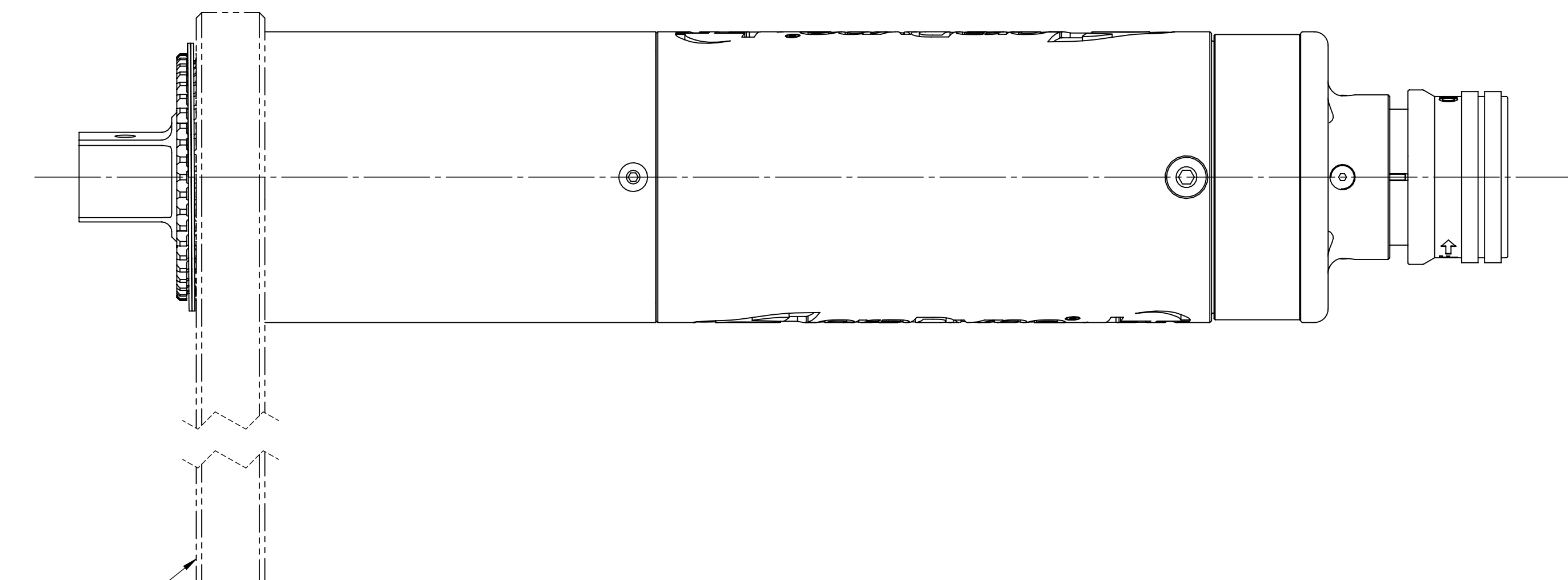
MODEL NO.	GEAR BOX ASM.
AEJ4A66250B	28658
AEJ4A66425B	28798
AEJ4A66625B	28108
AEJ4A66925B	28109

SIZE	PART / DRAWING NUMBER	REVISION
D	AEJ4A66__B	B

SCALE: 3:4 DO NOT SCALE DRAWING SHEET 1 OF 2



NOTE:
REACTION BAR GEOMETRY
TO CHANGE DEPENDING
ON REACTION BAR CHOSEN.



MODEL
AEJ4A66250B
AEJ4A66425B
AEJ4A66625B
AEJ4A66925B



DOCUMENT CONTROL
PRINTED COPIES OF THIS DOCUMENT ARE CONSIDERED TO BE UNCONTROLLED DOCUMENTS. HOLDERS ARE RESPONSIBLE FOR VERIFYING THE CURRENT REVISION LEVEL WITH PURCHASING OR ENGINEERING PRIOR TO USE OR FABRICATION. THE CONTROLLED VERSION OF THIS DOCUMENT IS ELECTRONICALLY MAINTAINED.

PROPRIETARY AND CONFIDENTIAL
THIS DRAWING CONTAINS INFORMATION STRICTLY CONFIDENTIAL TO ACRADYNE/AIMCO. IN THE ABSENCE OF EXPRESSED WRITTEN PERMISSION, ACRADYNE/AIMCO HAS LOANED THIS COPY WITH THE MUTUAL UNDERSTANDING THAT (A) IT WILL NOT BE USED FOR ANY PURPOSE OTHER THAN FOR THAT IN WHICH IT WAS PROVIDED, (B) THE DATA CONTAINED HEREIN WILL NOT BE DISCLOSED TO OTHERS, (C) IT WILL NOT BE REPRODUCED, AND (D) IT WILL BE RETURNED TO ACRADYNE/AIMCO IMMEDIATELY UPON DEMAND.

REVISION LEVEL	REVISION RELEASE DATE	DESCRIPTION OF CHANGES MADE TO PART	ECN #	AUTHOR/ APPROVAL

REVISION BLOCK

UNLESS OTHERWISE SPECIFIED, DIMENSIONS ARE IN INCHES
DIMENSIONS AND TOLERANCING PER ANSI Y14.5
SURFACE ROUGHNESS PER ANSI Y14.36

BLOCK TOLERANCING PER DECIMAL:
X = ±.030 XX = ±.010 XXX = ±.005 XXXX = ±.0005
ANGLE = ±0° 30'

REMOVE BURRS AND SHARP EDGES: R.015 MAX
MACHINE SURFACE FINISH: 125 RMS OR BETTER

DRAWINGS AND TECHNICAL DOCUMENTS CONTROLLED BY:
ACRADYNE MECHANICAL ENGINEERING

"J" HANDLE NUTRUNNER
6000 SERIES

SIZE	PART / DRAWING NUMBER	REVISION
D	AEJ4A66__B	B

SCALE: 1:1 DO NOT SCALE DRAWING SHEET 2 OF 2