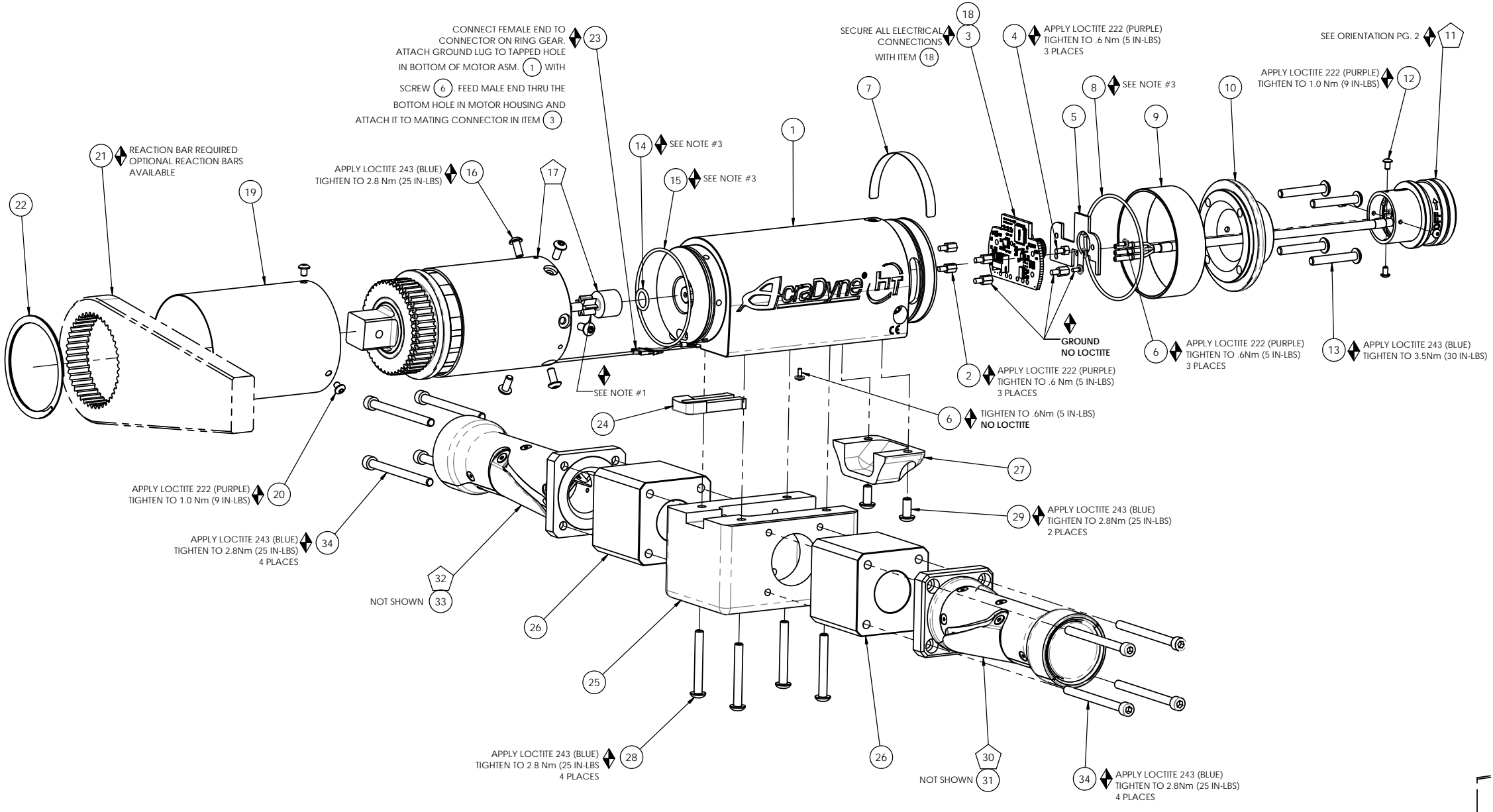
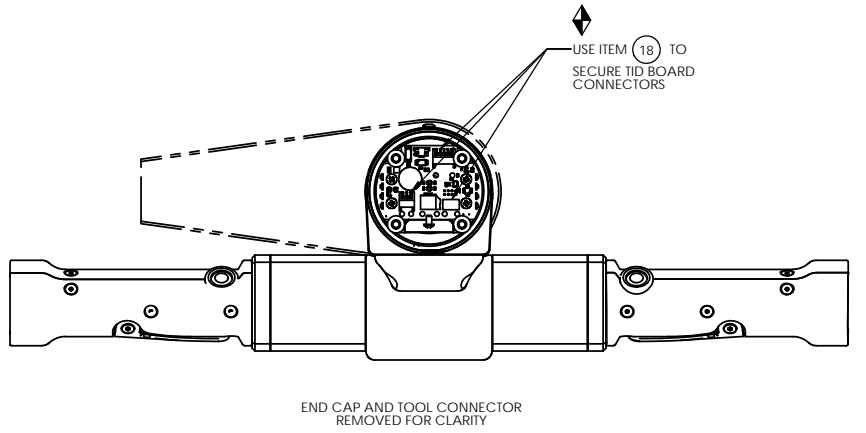


TOOL MODEL	GEAR CASE ASM.
AEF4A66625BDL	28108
AEF4A66925BDL	28109



COMMENTS	ITEM NO.	PART NUMBER	QTY.	DESCRIPTION
	1	26481	1	MOTOR ASM.
	2	25574	5	STANDOFF M-F, 4-40x1/4, 3/16 HEX, SS
	3	27727	1	TID BOARD, POPULATED W/AMP
	4	29337	3	STANDOFF, M-F, 4-40 X 1/8, SS
	5	29336	1	TID BOARD WIRE INSULATOR
	6	25573	5	SCREW PHP 4-40 X 3/16 18-8 SS
	7	20534	1	SERIAL/MODEL LABEL
	8	26487	1	O-RING, LED COVER
	9	26483	1	LED COVER
	10	26462	1	END CAP, "J" HANDLE
	11	26280	1	TOOL CONNECTOR ASM., "J" HANDLE
	12	25745	4	SCREW, BHSC 4-40 STEEL, BLACK OXIDE
	13	27401	4	SCREW, BHSC 10-32 X 1.25, STEEL, BLK OXIDE
	14	26299	1	O-RING, PINION
	15	26488	1	O-RING, MOTOR HOUSING
	16	29285	6	SCREW, BHSC, TORX, 8-32 x .38, STEEL
	17	SEE CHART	1	GEAR BOX ASM.
	18	27464	A/R	TWISTED WAXED LINEN TWINE
	19	26495	1	GEAR CASE COVER
	20	26319	3	SCREW, BHSC 6-32 X .188, 18-8 SS
	21	26896	1	CHOOSE REACTION BAR
	22	26514	1	RETAINING RING, SPIRAL, Ø2.441 X Ø2.105 X .078
	23	28211	1	(4) LINE MALE/FEMALE JUMPER ASM.
	24	24838	1	TRANSDUCER CABLE CHASE
	25	28060	1	HANDLE BLOCK, HT DUAL LEVER
	26	28059	2	HANDLE SPACER, HT DUAL LEVER
	27	26224	1	TRAY, WIRE, PISTOL
	28	26228	4	SCREW, BHSC 10-32X1.50, STEEL, BLACK OXIDE
	29	28664	2	SCREW, BHSC, 10-32 X .437, STEEL
	30	28070	1	HANDLE ASM., DUAL LEVER, MFB DISABLED
NOT SHOWN	31	28107	1	TRIGGER CABLE
	32	28066	1	HANDLE ASM., DUAL LEVER
NOT SHOWN	33	25582	1	TRIGGER CABLE
	34	28002	8	SCREW, SHC, 10-32 X 2.5, STEEL



- ◆ ASSEMBLY INSTRUCTIONS
- ◊ SUB-ASSEMBLY

- GEARS & SPLINES: LUBRICATE WITH DOW CORNING MOLYKOTE BR2 PLUS GREASE.
- BEARINGS: LUBRICATE WITH CHEVRON SR1 GREASE
- O-RINGS: LUBRICATE WITH O-RING LUBE



**DOCUMENT CONTROL**  
 PRINTED COPIES OF THIS DOCUMENT ARE CONSIDERED TO BE UNCONTROLLED DOCUMENTS. HOLDERS ARE RESPONSIBLE FOR VERIFYING THE CURRENT REVISION LEVEL WITH PURCHASING OR ENGINEERING PRIOR TO USE OR FABRICATION. THE CONTROLLED VERSION OF THIS DOCUMENT IS ELECTRONICALLY MAINTAINED.

**PROPRIETARY AND CONFIDENTIAL**  
 THIS DRAWING CONTAINS INFORMATION STRICTLY CONFIDENTIAL TO ACRADYNE/AIMCO. IN THE ABSENCE OF EXPRESSED WRITTEN PERMISSION, ACRADYNE/AIMCO HAS LOANED THIS COPY WITH THE MUTUAL UNDERSTANDING THAT (A) IT WILL NOT BE USED FOR ANY PURPOSE OTHER THAN FOR THAT IN WHICH IT WAS PROVIDED, (B) THE DATA CONTAINED HEREIN WILL NOT BE DISCLOSED TO OTHERS, (C) IT WILL NOT BE REPRODUCED, AND (D) IT WILL BE RETURNED TO ACRADYNE/AIMCO IMMEDIATELY UPON DEMAND.

REVISION LEVEL	REVISION RELEASE DATE	DESCRIPTION OF CHANGES MADE TO PART	ECN #	AUTHOR/ APPROVAL
REVISION BLOCK				

**UNLESS OTHERWISE SPECIFIED, DIMENSIONS ARE IN INCHES**  
 DIMENSIONS AND TOLERANCING PER ANSI Y14.5 SURFACE ROUGHNESS PER ANSI Y14.36

**BLOCK TOLERANCING PER DECIMAL:**  
 .X = ±.030 .XX = ±.010 .XXX = ±.005 .XXXX = ±.0005 ANGLE = 30°/30°

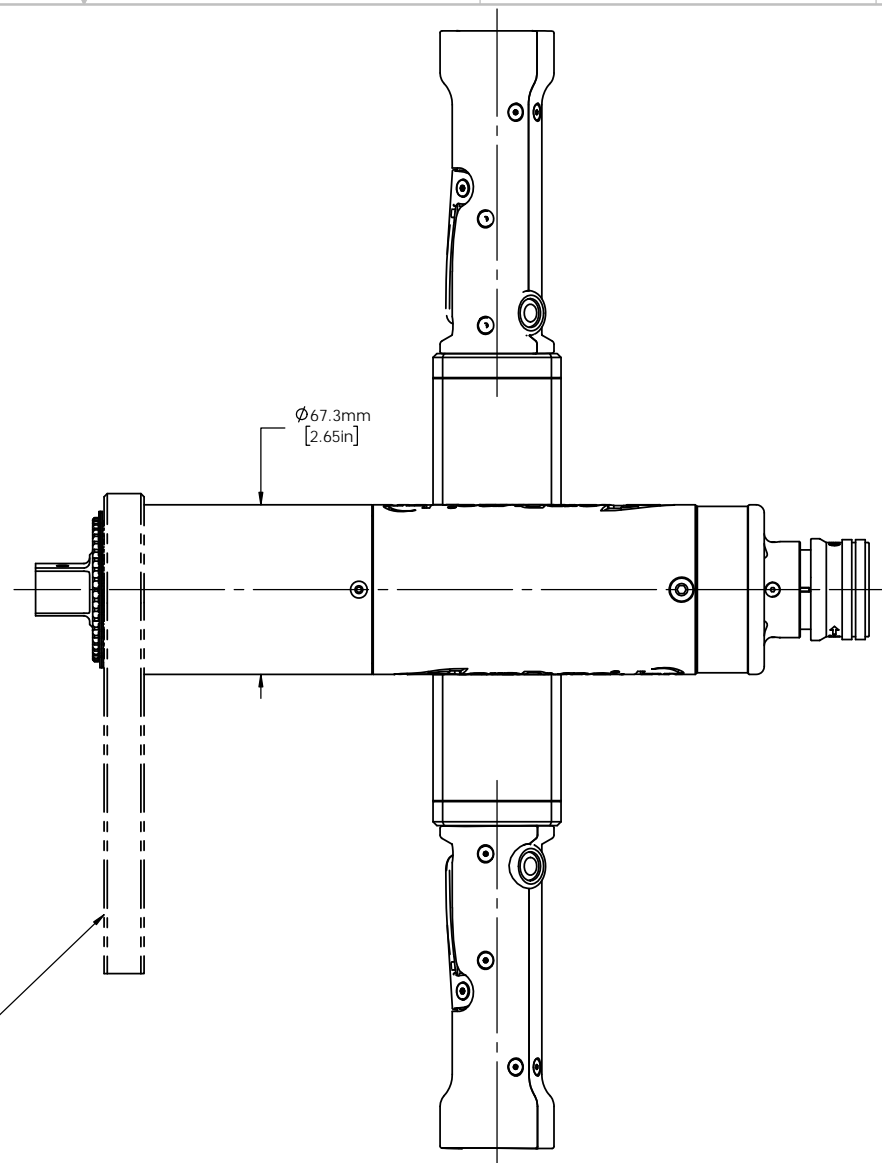
REMOVE BURRS AND SHARP EDGES: R.015 MAX MACHINE SURFACE FINISH: 125 RMS OR BETTER

DRAWINGS AND TECHNICAL DOCUMENTS CONTROLLED BY:  
**ACRADYNE MECHANICAL ENGINEERING**

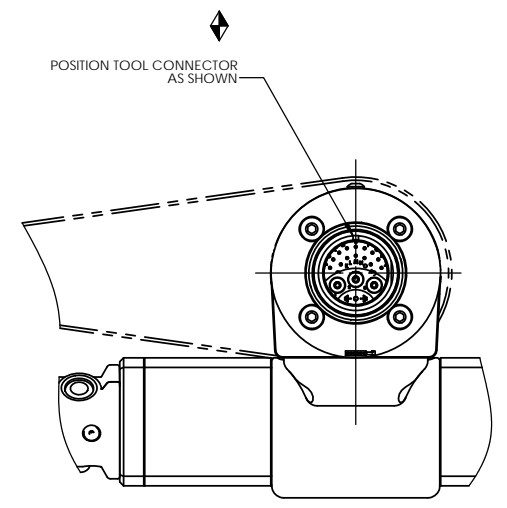
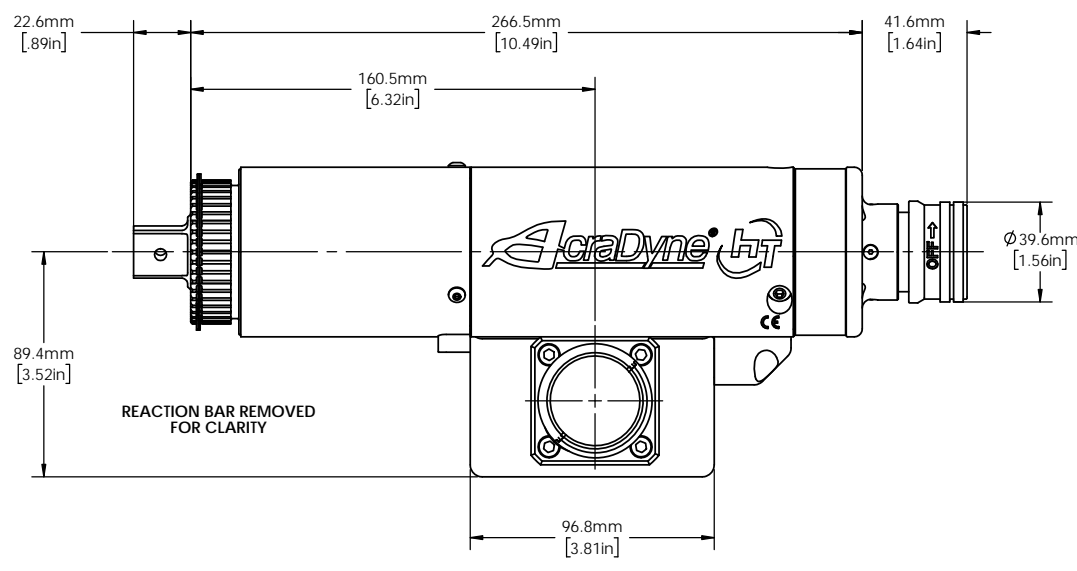
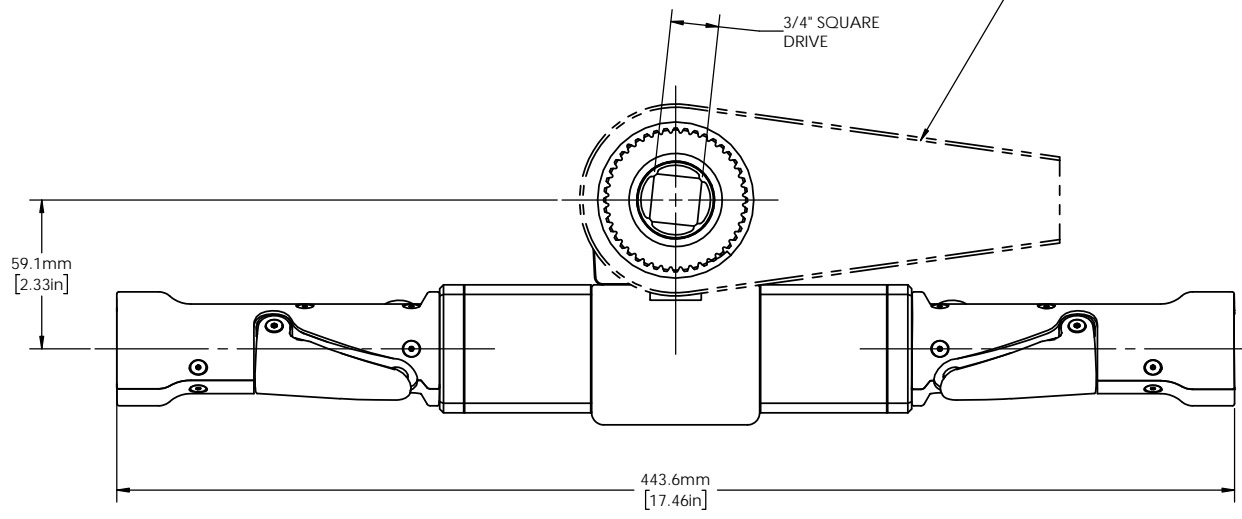
**FIXTURED NUTRUNNER DUAL LEVER 6000-SERIES**

SIZE	PART / DRAWING NUMBER	REVISION
<b>D</b>	<b>AEF4A66__BDL</b>	<b>A</b>
SCALE 2 : 3	DO NOT SCALE DRAWING	SHEET 1 OF 2

<b>MODEL NO.</b>
AEF4A66625BDL
AEF4A66925BDL



NOTE:  
REACTION BAR GENOMETRY  
TO CHANGE DEPENDING  
ON REACTION BAR CHOSEN



**DOCUMENT CONTROL**  
PRINTED COPIES OF THIS DOCUMENT ARE CONSIDERED TO BE UNCONTROLLED DOCUMENTS. HOLDERS ARE RESPONSIBLE FOR VERIFYING THE CURRENT REVISION LEVEL WITH PURCHASING OR ENGINEERING PRIOR TO USE OR FABRICATION. THE CONTROLLED VERSION OF THIS DOCUMENT IS ELECTRONICALLY MAINTAINED.

**PROPRIETARY AND CONFIDENTIAL**  
THIS DRAWING CONTAINS INFORMATION STRICTLY CONFIDENTIAL TO ACRADYNE/AIMCO. IN THE ABSENCE OF EXPRESSED WRITTEN PERMISSION, ACRADYNE/AIMCO HAS LOANED THIS COPY WITH THE MUTUAL UNDERSTANDING THAT (A) IT WILL NOT BE USED FOR ANY PURPOSE OTHER THAN FOR THAT IN WHICH IT WAS PROVIDED, (B) THE DATA CONTAINED HEREIN WILL NOT BE DISCLOSED TO OTHERS, (C) IT WILL NOT BE REPRODUCED, AND (D) IT WILL BE RETURNED TO ACRADYNE/AIMCO IMMEDIATELY UPON DEMAND.

REVISION LEVEL	REVISION RELEASE DATE	DESCRIPTION OF CHANGES MADE TO PART	ECN #	AUTHOR/ APPROVAL
<b>REVISION BLOCK</b>				

**UNLESS OTHERWISE SPECIFIED, DIMENSIONS ARE IN INCHES**  
DIMENSIONS AND TOLERANCING PER ANSI Y14.5  
SURFACE ROUGHNESS PER ANSI Y14.36

**BLOCK TOLERANCING PER DECIMAL:**  
.X = ±.030 .XX = ±.010 .XXX = ±.005 .XXXX = ±.0005  
ANGLE = ±0° 30'

REMOVE BURRS AND SHARP EDGES: R.015 MAX  
MACHINE SURFACE FINISH: 125 RMS OR BETTER

DRAWINGS AND TECHNICAL DOCUMENTS CONTROLLED BY:  
**ACRADYNE MECHANICAL ENGINEERING**

<b>FIXTURED NUTRUNNER DUAL LEVER 6000-SERIES</b>		
SIZE <b>D</b>	PART / DRAWING NUMBER <b>AEF4A66__BDL</b>	REVISION <b>A</b>
SCALE 1:2	DO NOT SCALE DRAWING	SHEET 2 OF 2