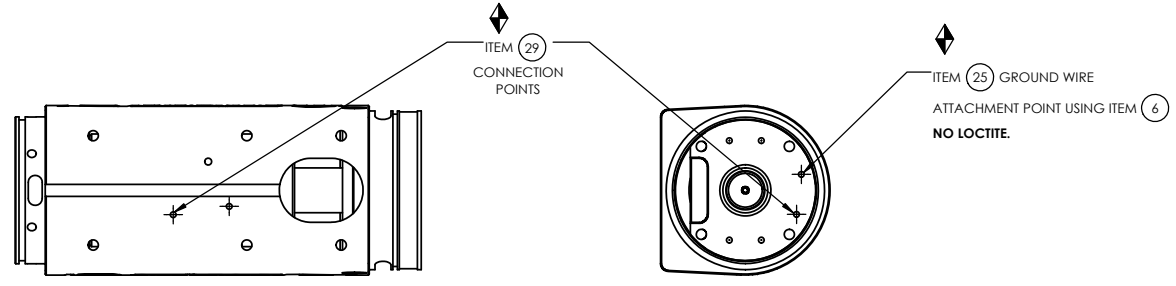
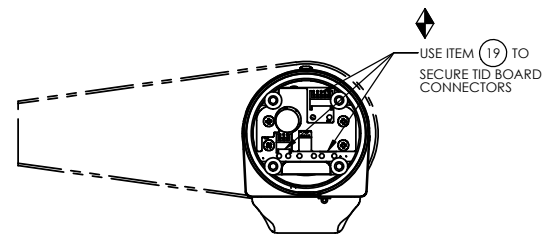


TOOL MODEL	GEAR BOX ASM.
AEF4A66250BB	28658
AEF4A66425BB	28798
AEF4A66625BB	28108
AEF4A66925BB	28109

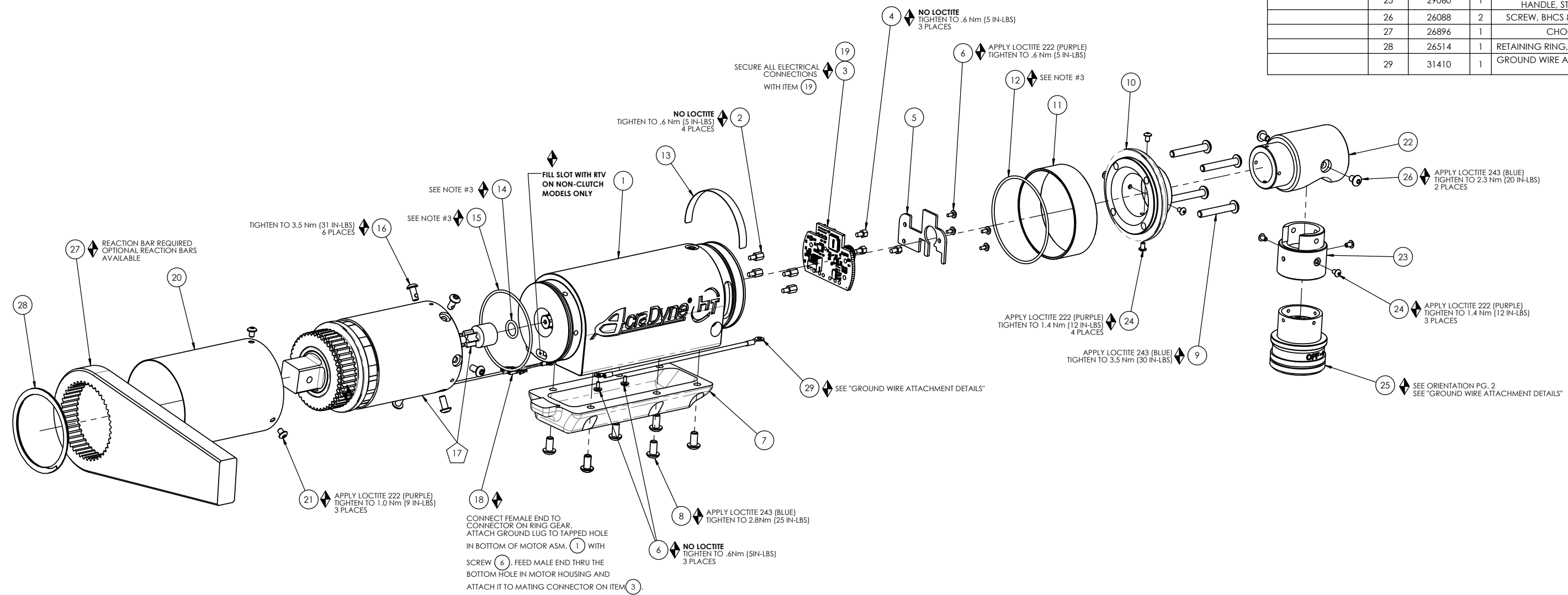
COMMENTS	ITEM NO.	PART NUMBER	QTY.	DESCRIPTION
	1	26481	1	MOTOR ASM.
	2	25574	4	STANDOFF M-F, 4-40x1/4, 3/16 HEX, SS
	3	27727	1	TID BOARD, POPULATED W/AMP
	4	29337	3	STANDOFF, M-F, 4-40 X 1/8, SS
	5	29336	1	TID BOARD WIRE INSULATOR
	6	25573	8	SCREW PHP 4-40 X 3/16 18-8 SS
	7	26297	1	TRAY, WIRE, "D" & LEVER HANDLE
	8	26206	7	SCREW, BHSC 10-32 X .375, STEEL
	9	27401	4	SCREW, BHSC 10-32 X 1.25, STEEL, BLK OXIDE
	10	26462	1	END CAP, "J" HANDLE
	11	26483	1	LED COVER
	12	26487	1	O-RING, LED COVER
	13	20534	1	SERIAL/MODEL LABEL
	14	26299	1	O-RING, PINION
	15	26488	1	O-RING, MOTOR HOUSING
	16	29285	6	SCREW, BHSC, 8-32 x .38, TORX HEAD, NYLON PELL-IT, BLK OXIDE
	17	SEE CHART	1	GEARBOX ASM.
	18	28211	1	(4) LINE MALE/FEMALE JUMPER ASM.
NOT SHOWN	19	27464	A/R	TWISTED WAXED LINEN TWINE
	20	26495	1	GEAR CASE COVER
	21	26319	3	SCREW, BHSC 6-32 X .188, 18-8 SS
	22	27231	1	RIGHT ANGLE ADAPTER, TOOL CONNECTOR
	23	26400	1	SHELL ADAPTER, TOOL CONNECTOR
	24	25745	7	SCREW, BHSC 4-40 STEEL, BLACK OXIDE
	25	29060	1	TOOL CONNECTOR, BOTTOM EXIT, FIXTURED, J-HANDLE, STRAIGHT, 6000-7000 SERIES
	26	26088	2	SCREW, BHCS 8-32X.25, STEEL, BLACK OXIDE
	27	26896	1	CHOOSE REACTION BAR
	28	26514	1	RETAINING RING, SPIRAL, Ø2.441 X Ø2.105 X .078
	29	31410	1	GROUND WIRE ASSEMBLY, 18 AWG, 6000 & 7000 HT SERIES



GROUND WIRE ATTACHMENT DETAILS



END CAP AND TOOL CONNECTOR REMOVED FOR CLARITY



- ◆ ASSEMBLY INSTRUCTIONS
- ◻ SUB-ASSEMBLY

- 1) GEARS & SPLINES: LUBRICATE WITH DOW CORNING MOLYKOTE BR2 PLUS GREASE.
- 2) BEARINGS: LUBRICATE WITH CHEVRON SR1 GREASE
- 3) O-RINGS: LUBRICATE WITH O-RING LUBE



DOCUMENT CONTROL
 PRINTED COPIES OF THIS DOCUMENT ARE CONSIDERED TO BE UNCONTROLLED DOCUMENTS. HOLDERS ARE RESPONSIBLE FOR VERIFYING THE CURRENT REVISION LEVEL WITH PURCHASING OR ENGINEERING PRIOR TO USE OR FABRICATION. THE CONTROLLED VERSION OF THIS DOCUMENT IS ELECTRONICALLY MAINTAINED.

PROPRIETARY AND CONFIDENTIAL
 THIS DRAWING CONTAINS INFORMATION STRICTLY CONFIDENTIAL TO ACRADYNE/AIMCO. IN THE ABSENCE OF EXPRESSED WRITTEN PERMISSION, ACRADYNE/AIMCO HAS LOANED THIS COPY WITH THE MUTUAL UNDERSTANDING THAT (A) IT WILL NOT BE USED FOR ANY PURPOSE OTHER THAN FOR THAT IN WHICH IT WAS PROVIDED, (B) THE DATA CONTAINED HEREIN WILL NOT BE DISCLOSED TO OTHERS, (C) IT WILL NOT BE REPRODUCED, AND (D) IT WILL BE RETURNED TO ACRADYNE/AIMCO IMMEDIATELY UPON DEMAND.

REVISION LEVEL	REVISION RELEASE DATE	DESCRIPTION OF CHANGES MADE TO PART	ECN #	AUTHOR/ APPROVAL

UNLESS OTHERWISE SPECIFIED, DIMENSIONS ARE IN INCHES
 DIMENSIONS AND TOLERANCING PER ANSI Y14.5 SURFACE ROUGHNESS PER ANSI Y14.36

BLOCK TOLERANCING PER DECIMAL:
 .X = ±.030 .XX = ±.010 .XXX = ±.005 .XXXX = ±.0005
 ANGLE = ±0°30'

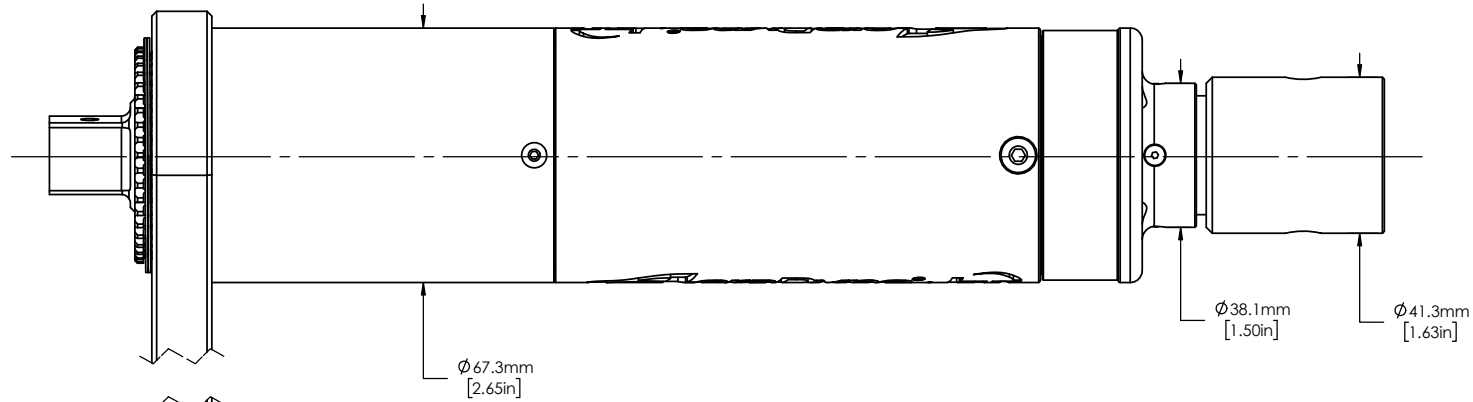
REMOVE BURRS AND SHARP EDGES: R.015 MAX MACHINE SURFACE FINISH: 125 RMS OR BETTER

DRAWINGS AND TECHNICAL DOCUMENTS CONTROLLED BY:
ACRADYNE MECHANICAL ENGINEERING

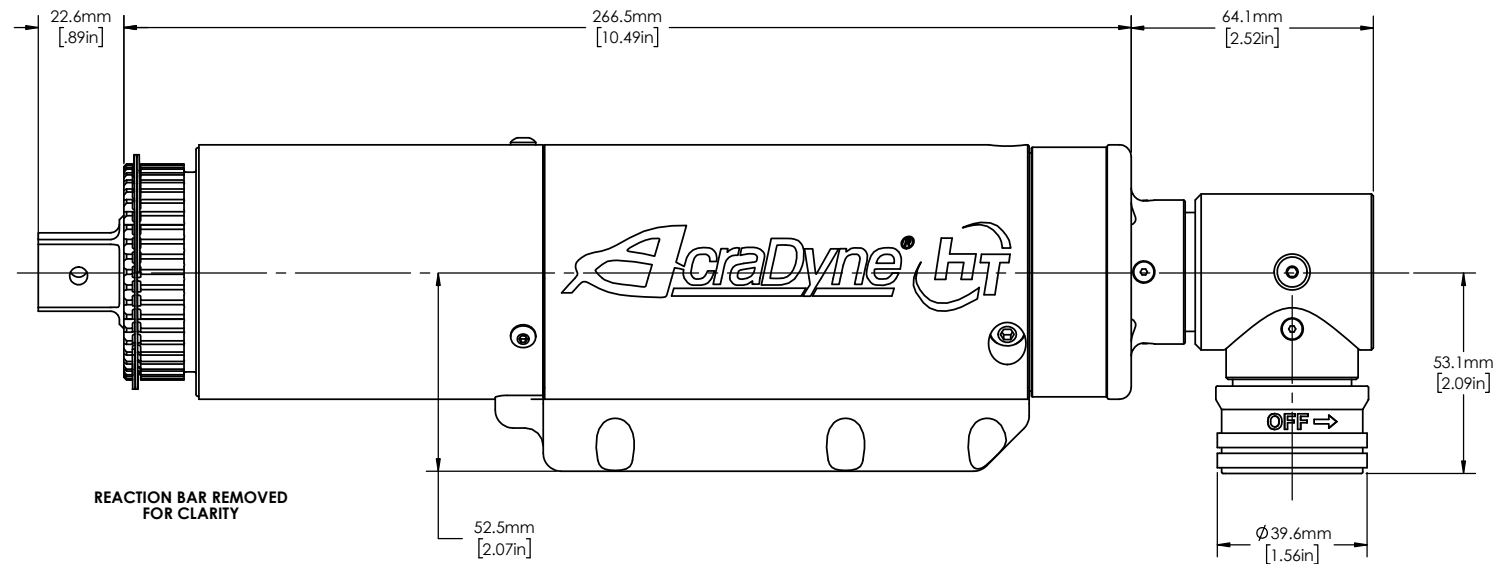
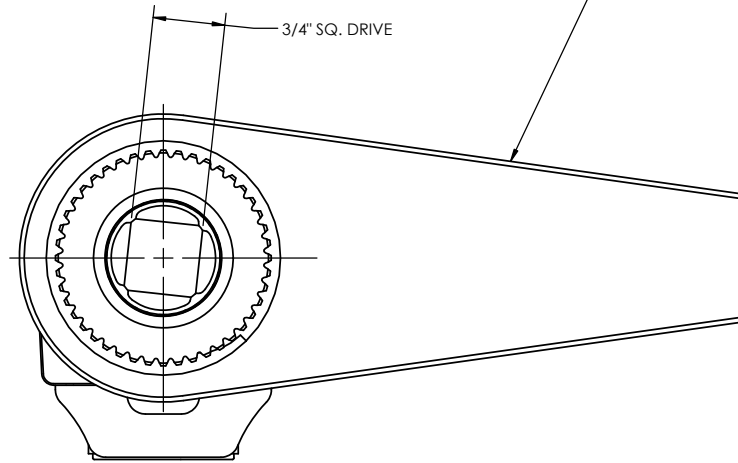
FIXTURED NUTRUNNER BOTTOM EXIT 6000-SERIES

SIZE	PART / DRAWING NUMBER	REVISION
D	AEF4A66_BB	A

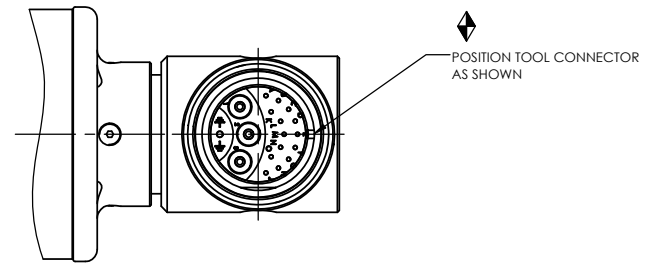
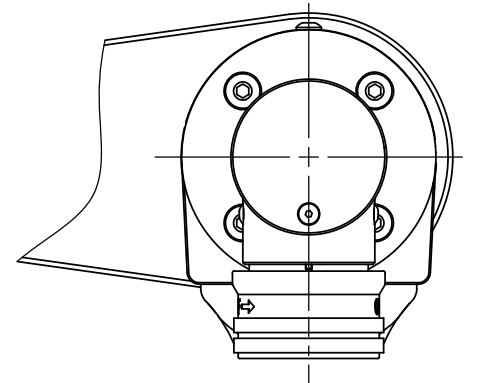
SCALE: 2:3 DO NOT SCALE DRAWING SHEET 1 OF 2



NOTE:
REACTION BAR GEOMETRY
TO CHANGE DEPENDING
ON REACTION BAR CHOSEN



REACTION BAR REMOVED
FOR CLARITY



◆ ASSEMBLY INSTRUCTIONS
◻ SUB-ASSEMBLY

MODEL NO.
AEF4A66250BB
AEF4A66425BB
AEF4A66625BB
AEF4A66925BB



DOCUMENT CONTROL
PRINTED COPIES OF THIS DOCUMENT ARE CONSIDERED TO BE UNCONTROLLED DOCUMENTS. HOLDERS ARE RESPONSIBLE FOR VERIFYING THE CURRENT REVISION LEVEL WITH PURCHASING OR ENGINEERING PRIOR TO USE OR FABRICATION. THE CONTROLLED VERSION OF THIS DOCUMENT IS ELECTRONICALLY MAINTAINED.

PROPRIETARY AND CONFIDENTIAL
THIS DRAWING CONTAINS INFORMATION STRICTLY CONFIDENTIAL TO ACRADYNE/AIMCO. IN THE ABSENCE OF EXPRESSED WRITTEN PERMISSION, ACRADYNE/AIMCO HAS LOANED THIS COPY WITH THE MUTUAL UNDERSTANDING THAT (A) IT WILL NOT BE USED FOR ANY PURPOSE OTHER THAN FOR THAT IN WHICH IT WAS PROVIDED, (B) THE DATA CONTAINED HEREIN WILL NOT BE DISCLOSED TO OTHERS, (C) IT WILL NOT BE REPRODUCED, AND (D) IT WILL BE RETURNED TO ACRADYNE/AIMCO IMMEDIATELY UPON DEMAND.

REVISION LEVEL	REVISION RELEASE DATE	DESCRIPTION OF CHANGES MADE TO PART	ECN #	AUTHOR/ APPROVAL

UNLESS OTHERWISE SPECIFIED, DIMENSIONS ARE IN INCHES
DIMENSIONS AND TOLERANCING PER ANSI Y14.5
SURFACE ROUGHNESS PER ANSI Y14.36

BLOCK TOLERANCING PER DECIMAL:
.X = ±.030 .XX = ±.010 .XXX = ±.005 .XXXX = ±.0005
ANGLE = ±0° 30'

REMOVE BURRS AND SHARP EDGES: R.015 MAX
MACHINE SURFACE FINISH: 125 RMS OR BETTER

DRAWINGS AND TECHNICAL DOCUMENTS CONTROLLED BY:
ACRADYNE MECHANICAL ENGINEERING

FIXTURED NUTRUNNER BOTTOM EXIT 6000-SERIES		
SIZE D	PART / DRAWING NUMBER AEF4A66 BB	REVISION A
SCALE 1:2	DO NOT SCALE DRAWING	SHEET 2 OF 2