

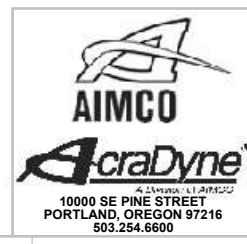
COMMENTS	ITEM NO.	PART NUMBER	QTY.	DESCRIPTION
	1	26213	1	MOTOR ASSEMBLY, 5000-SERIES
	2	26198	1	THRUST WASHER
	3	26074	1	BELLEVILLE WASHER
	4	SEE CHART	1	GEAR TRAIN ASM.
	5	26530	2	DOWEL PIN, Ø1/8 x 1.00, STEEL
	6	27391	1	PIN RETAINER RING
	7	20912	1	WAVE SPRING --- 3000 SERIES
	8	SEE CHART	1	ASSEMBLY, GEAR CARRIER
	9	20911	2	BELLEVILLE WASHER
	10	SEE CHART	1	SLIDING OUTPUT SPINDLE ASM
	11	20913	2	PIN, RETAINING
	12	26077	2	M-F THREADED HEX STANDOFF
	13	26359	1	FIXTURE TOOL LED BOARD ASM.
	14	26078	2	SHC SCREW, 4-40, BLACK OXIDE
	15	26080	1	O-RING, LED LIGHT RING COVER
	16	26079	1	LIGHT RING COVER, LED
	17	20534	1	LABEL, SERIAL/MODEL NUMBER
	18	26397	1	SUPPORT, CIRCUIT BOARD
	19	25847	1	TID BOARD ASM., 2000-3000 SERIES
	20	25130	2	SCREW, BHSC, 4-40 X 1/4, STEEL
	21	24917	4	SCREW, PHP TAP-TITE, #4 x .38
	22	26396	1	HOUSING, CIRCUIT BOARD
	23	26439	4	SCREW, FHSC, 6-32 x .500, STEEL, BLACK OXIDE
	24	26081	1	MOTOR HOUSING COVER
	25	25385	4	SCREW, FHSC 6-32 X .375, STEEL
	26	22141	1	SAFETY LABEL
	27	26398	1	STRAIGHT ADAPTER
	28	26088	6	SCREW, BHCS 8-32X.25, STEEL, BLACK OXIDE
	29	25745	5	SCREW, BHSC 4-40 STEEL, BLACK OXIDE
	30	26407	1	TOOL CONNECTOR ASM., FIXTURED

MODEL NO.	GEAR TRAIN ASM.	GEAR CARRIER ASM.	SLIDING OUTPUT SPINDLE ASM.
AEF35075A-2	26116	20924	26405
AEF35090A-2	26115	26117	26405
AEF35110A-2	26114	20924	26405
AEF35135A-2	26113	26117	26405
AEF35170A-2	26111	26117	27689

◆ ASSEMBLY INSTRUCTIONS
 ◊ SUB-ASSEMBLY

- 1) GEARS & SPLINES: LUBRICATE WITH DOW CORNING MOLYKOTE BR2 PLUS GREASE.
- 2) BEARINGS: LUBRICATE WITH CHEVRON SR1 GREASE
- 3) O-RINGS: LUBRICATE WITH O-RING LUBE

REQUIRED TOOLING
LOCTITE 243 (BLUE)
1/16 HEX WRENCH
5/64 HEX WRENCH
3/32 HEX WRENCH
7/32 HEX WRENCH
#1 PHILLIPS DRIVER



DOCUMENT CONTROL
 PRINTED COPIES OF THIS DOCUMENT ARE CONSIDERED TO BE UNCONTROLLED DOCUMENTS. HOLDERS ARE RESPONSIBLE FOR VERIFYING THE CURRENT REVISION LEVEL WITH PURCHASING OR ENGINEERING PRIOR TO USE OR FABRICATION. THE CONTROLLED VERSION OF THIS DOCUMENT IS ELECTRONICALLY MAINTAINED.

PROPRIETARY AND CONFIDENTIAL
 THIS DRAWING CONTAINS INFORMATION STRICTLY CONFIDENTIAL TO ACRADYNE/AIMCO. IN THE ABSENCE OF EXPRESSED WRITTEN PERMISSION, ACRADYNE/AIMCO HAS LOANED THIS COPY WITH THE MUTUAL UNDERSTANDING THAT (A) IT WILL NOT BE USED FOR ANY PURPOSE OTHER THAN FOR THAT IN WHICH IT WAS PROVIDED, (B) THE DATA CONTAINED HEREIN WILL NOT BE DISCLOSED TO OTHERS, (C) IT WILL NOT BE REPRODUCED, AND (D) IT WILL BE RETURNED TO ACRADYNE/AIMCO IMMEDIATELY UPON DEMAND.

REVISION LEVEL	REVISION RELEASE DATE	DESCRIPTION OF CHANGES MADE TO PART	ECN #	AUTHOR/ APPROVAL
F	04/19/24	SHEET #2: BALLOON ITEMS #20, 27, 28, 29 WERE 19, 26, 27, 28	6427	T. BURNETT
E	03/03/16	26077 WAS 25574	1803	K. ARNELL
D	10/15/15	ADDED SLIDING OUTPUT SPINDLE ASM TO CHART ON SHEETS 1 & 2. ADDED 3/4" SO DRIVE VIEW TO OUTLINE DWG. SHEETS 3 & 4. SLIDING OUTPUT SPINDLE ASM. 27689 WAS 26405 IN TOOLS AEF35110A-2 & AEF35170A-2.	1638	T. BURNETT
C	11/12/13	25574 WAS 26077. TORQUE SPEC OF 1.0Nm @ 25385 WAS 1.7 Nm. NO LOCTITE @ GND. TERMINAL WAS LOCTITE 243.	1033	T. BURNETT
B	04/23/13	ADDED 27391. UPDATED FASTENER TORQUE SPECS.	913	M. JULIANO

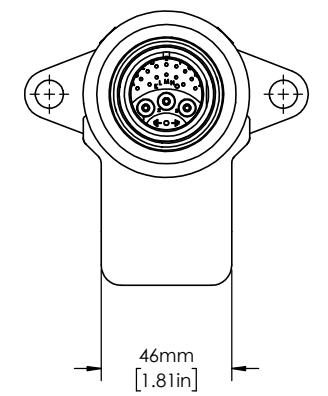
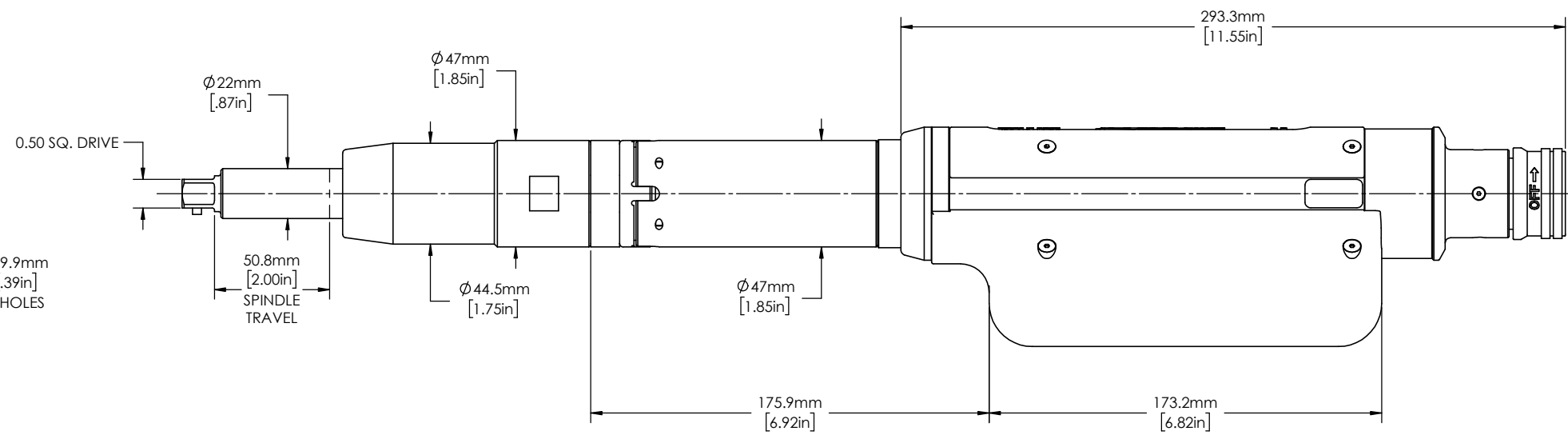
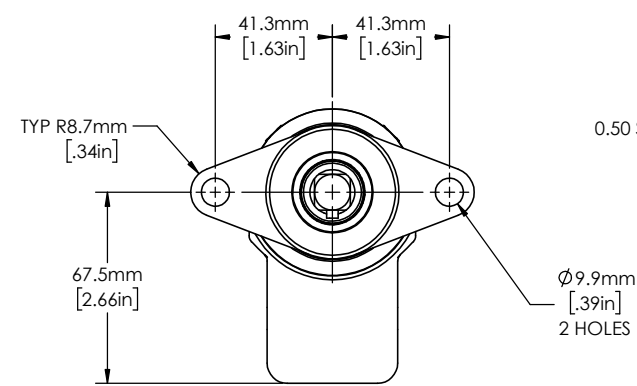
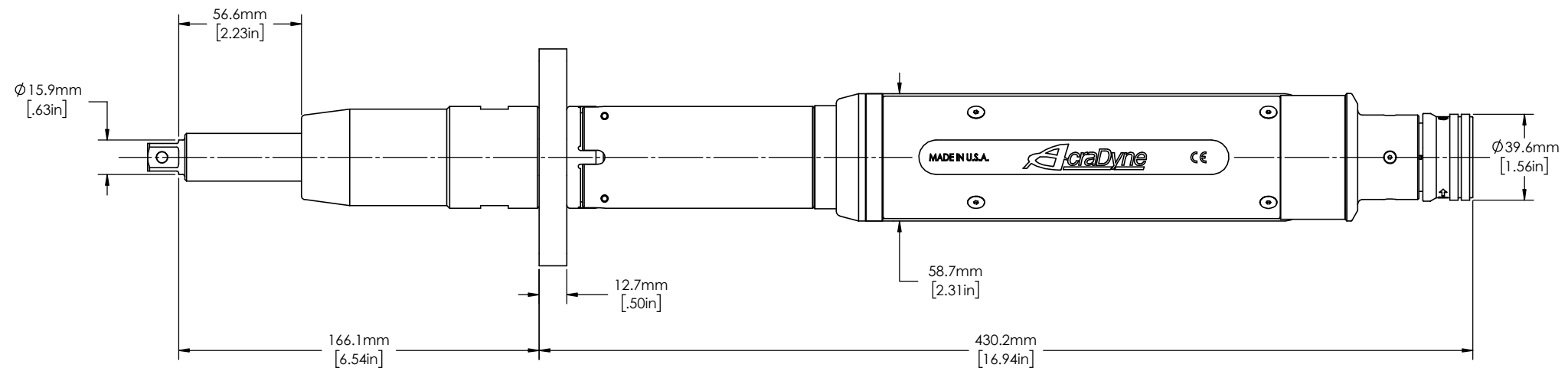
UNLESS OTHERWISE SPECIFIED, DIMENSIONS ARE IN INCHES
 DIMENSIONS AND TOLERANCING PER ANSI Y14.5 SURFACE ROUGHNESS PER ANSI Y14.36

BLOCK TOLERANCING PER DECIMAL:
 X = ±.030 XX = ±.010 XXX = ±.005 .XXXX = ±.0005
 ANGLE = ±0° 30'

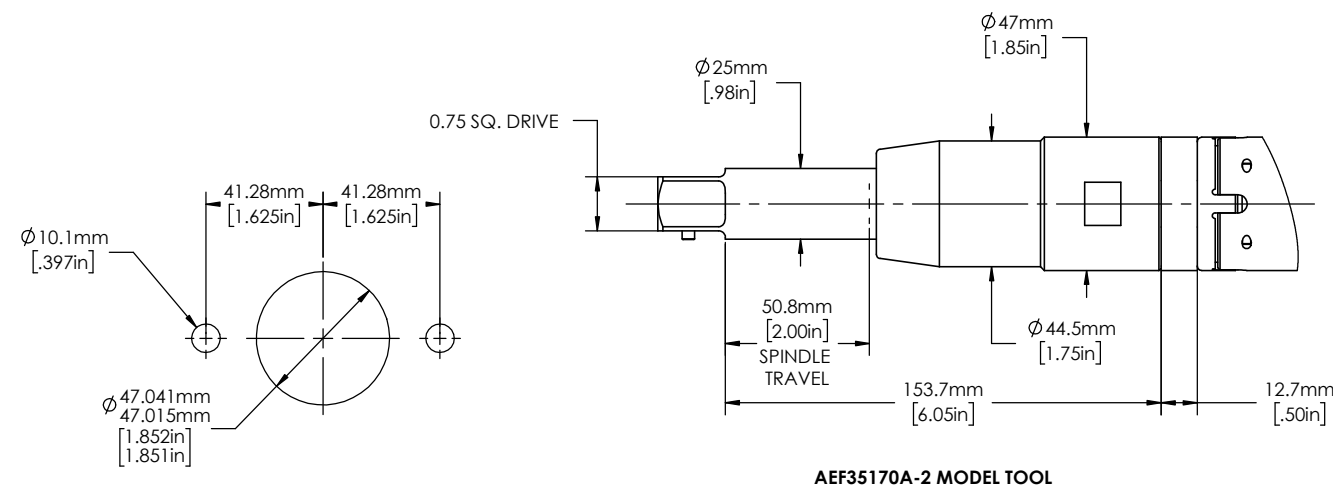
REMOVE BURRS AND SHARP EDGES: R.015 MAX MACHINE SURFACE FINISH: 125 RMS OR BETTER

DRAWINGS AND TECHNICAL DOCUMENTS CONTROLLED BY:
ACRADYNE MECHANICAL ENGINEERING

AEF35__A -2 FIXTURED NUTRUNNER 5000 SERIES, GEN 3		
SIZE	PART / DRAWING NUMBER	REVISION
D	AEF35__A -2	F
SCALE 3:4	DO NOT SCALE DRAWING	SHEET 1 OF 4



AEF35075A-2, AEF35090A-2, AEF35110A-2, AEF35135A-2
MODEL TOOLS



AEF35170A-2 MODEL TOOL

MOUNTING PLATE DIMENSIONS
(SUPPLIED BY CUSTOMER)
SCALE 1:1



DOCUMENT CONTROL
PRINTED COPIES OF THIS DOCUMENT ARE CONSIDERED TO BE UNCONTROLLED DOCUMENTS. HOLDERS ARE RESPONSIBLE FOR VERIFYING THE CURRENT REVISION LEVEL WITH PURCHASING OR ENGINEERING PRIOR TO USE OR FABRICATION. THE CONTROLLED VERSION OF THIS DOCUMENT IS ELECTRONICALLY MAINTAINED.

PROPRIETARY AND CONFIDENTIAL
THIS DRAWING CONTAINS INFORMATION STRICTLY CONFIDENTIAL TO ACRADYNE/AIMCO. IN THE ABSENCE OF EXPRESSED WRITTEN PERMISSION, ACRADYNE/AIMCO HAS LOANED THIS COPY WITH THE MUTUAL UNDERSTANDING THAT (A) IT WILL NOT BE USED FOR ANY PURPOSE OTHER THAN FOR THAT IN WHICH IT WAS PROVIDED, (B) THE DATA CONTAINED HEREIN WILL NOT BE DISCLOSED TO OTHERS, (C) IT WILL NOT BE REPRODUCED, AND (D) IT WILL BE RETURNED TO ACRADYNE/AIMCO IMMEDIATELY UPON DEMAND.

UNLESS OTHERWISE SPECIFIED, DIMENSIONS ARE IN INCHES
DIMENSIONS AND TOLERANCING PER ANSI Y14.5
SURFACE ROUGHNESS PER ANSI Y14.36

BLOCK TOLERANCING PER DECIMAL:
X = ±.030 XX = ±.010 XXX = ±.005 XXXX = ±.0005
ANGLE = ±0° 30'

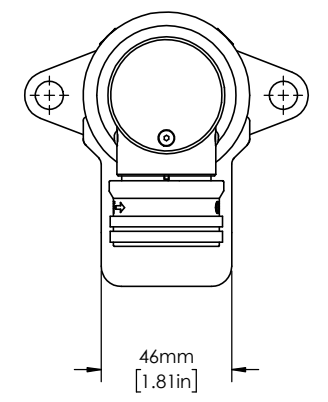
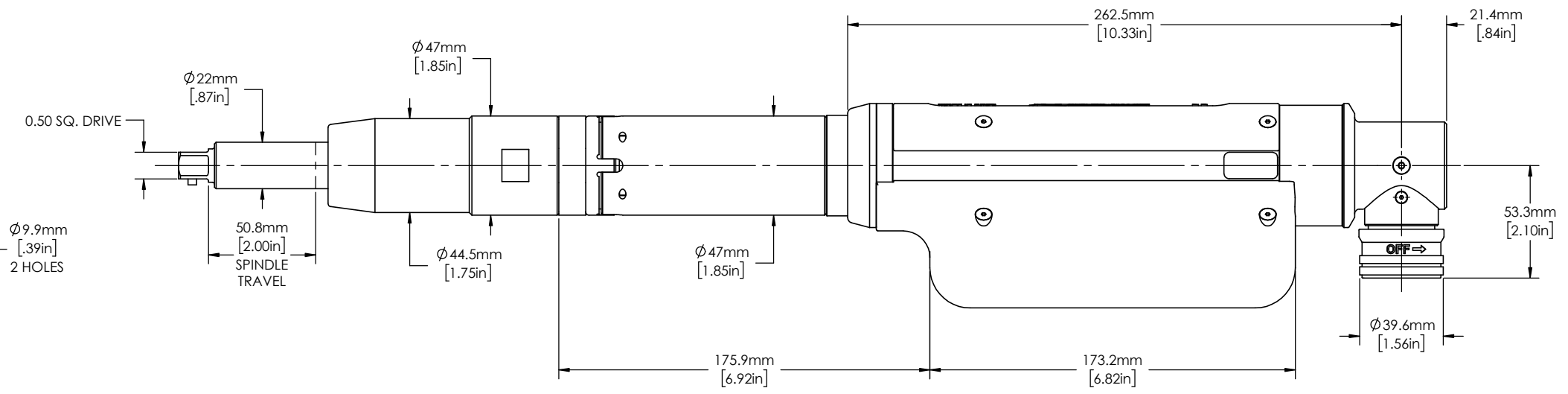
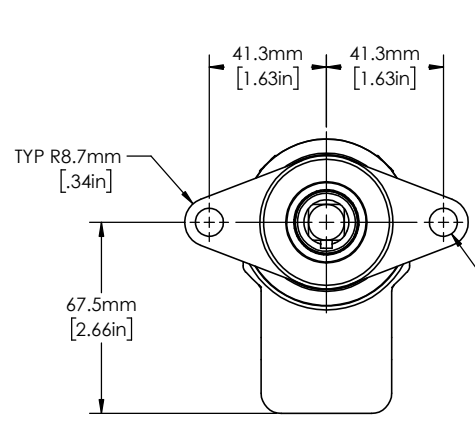
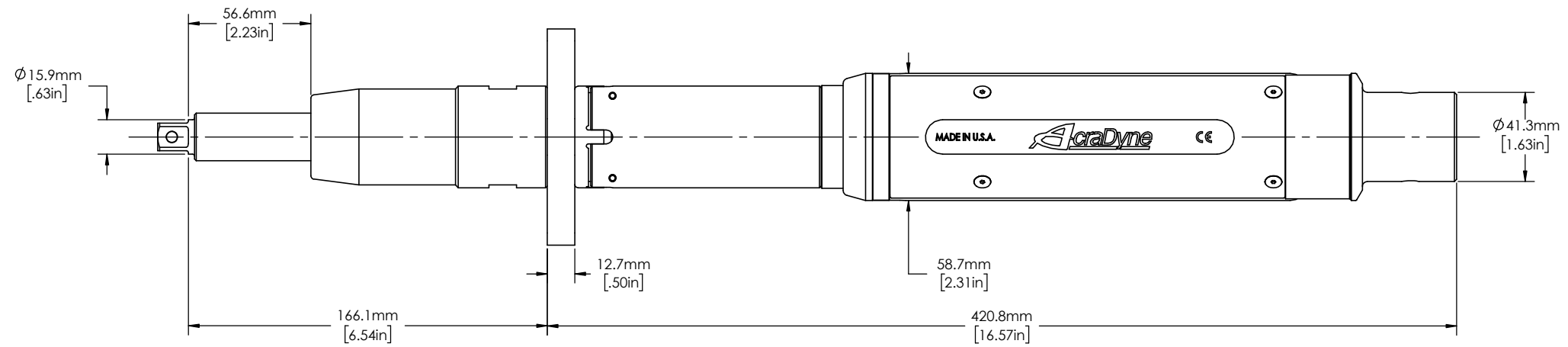
REMOVE BURRS AND SHARP EDGES: R.015 MAX
MACHINE SURFACE FINISH: 125 RMS OR BETTER

DRAWINGS AND TECHNICAL DOCUMENTS CONTROLLED BY:
ACRADYNE MECHANICAL ENGINEERING

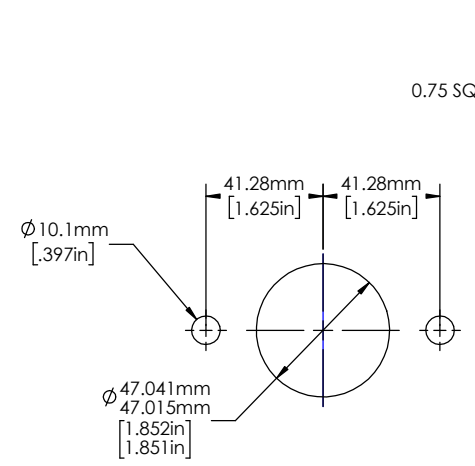
CATALOG NO.	MODEL NO.
	AEF35075A-2
	AEF35090A-2
	AEF35110A-2
	AEF35135A-2
AEF35170A-2	

AEF35 A -2
TOOL OUTLINE
REAR CABLE EXIT
5000 SERIES, GEN III

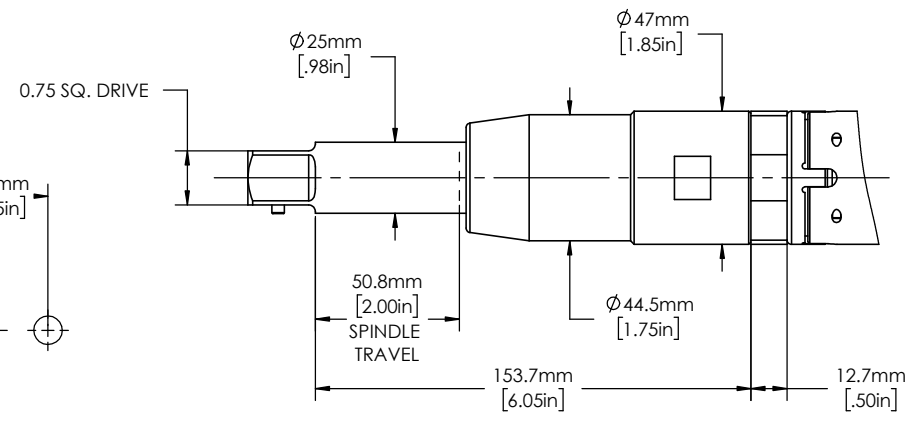
SIZE	PART / DRAWING NUMBER	REVISION
D	AEF35 A -2	F
SCALE 3:4	DO NOT SCALE DRAWING	SHEET 3 OF 4



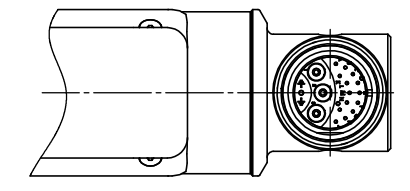
AEF35075AB-2, AEF35090AB-2, AEF35110AB-2, AEF35135AB-2
MODEL TOOLS



MOUNTING PLATE DIMENSIONS
(SUPPLIED BY CUSTOMER)
SCALE 1:1



AEF35170AB-2 MODEL TOOL



CATALOG NO.	MODEL NO.
	AEF35075AB-2
	AEF35090AB-2
	AEF35110AB-2
	AEF35135AB-2
AEF35170AB-2	



DOCUMENT CONTROL
PRINTED COPIES OF THIS DOCUMENT ARE CONSIDERED TO BE UNCONTROLLED DOCUMENTS. HOLDERS ARE RESPONSIBLE FOR VERIFYING THE CURRENT REVISION LEVEL WITH PURCHASING OR ENGINEERING PRIOR TO USE OR FABRICATION. THE CONTROLLED VERSION OF THIS DOCUMENT IS ELECTRONICALLY MAINTAINED.

PROPRIETARY AND CONFIDENTIAL
THIS DRAWING CONTAINS INFORMATION STRICTLY CONFIDENTIAL TO ACRADYNE/AIMCO. IN THE ABSENCE OF EXPRESSED WRITTEN PERMISSION, ACRADYNE/AIMCO HAS LOANED THIS COPY WITH THE MUTUAL UNDERSTANDING THAT (A) IT WILL NOT BE USED FOR ANY PURPOSE OTHER THAN FOR THAT IN WHICH IT WAS PROVIDED, (B) THE DATA CONTAINED HEREIN WILL NOT BE DISCLOSED TO OTHERS, (C) IT WILL NOT BE REPRODUCED, AND (D) IT WILL BE RETURNED TO ACRADYNE/AIMCO IMMEDIATELY UPON DEMAND.

UNLESS OTHERWISE SPECIFIED, DIMENSIONS ARE IN INCHES
DIMENSIONS AND TOLERANCING PER ANSI Y14.5 SURFACE ROUGHNESS PER ANSI Y14.36

BLOCK TOLERANCING PER DECIMAL:
X = ±.030 XX = ±.010 XXX = ±.005 XXXX = ±.0005
ANGLE = ±0° 30'

REMOVE BURRS AND SHARP EDGES: R.015 MAX MACHINE SURFACE FINISH: 125 RMS OR BETTER

DRAWINGS AND TECHNICAL DOCUMENTS CONTROLLED BY:
ACRADYNE MECHANICAL ENGINEERING

AEF35 A -2		
TOOL OUTLINE		
BOTTOM CABLE EXIT		
5000 SERIES, GEN 3		
SIZE	PART / DRAWING NUMBER	REVISION
D	AEF35 A -2	F
SCALE 3:4	DO NOT SCALE DRAWING	SHEET 4 OF 4