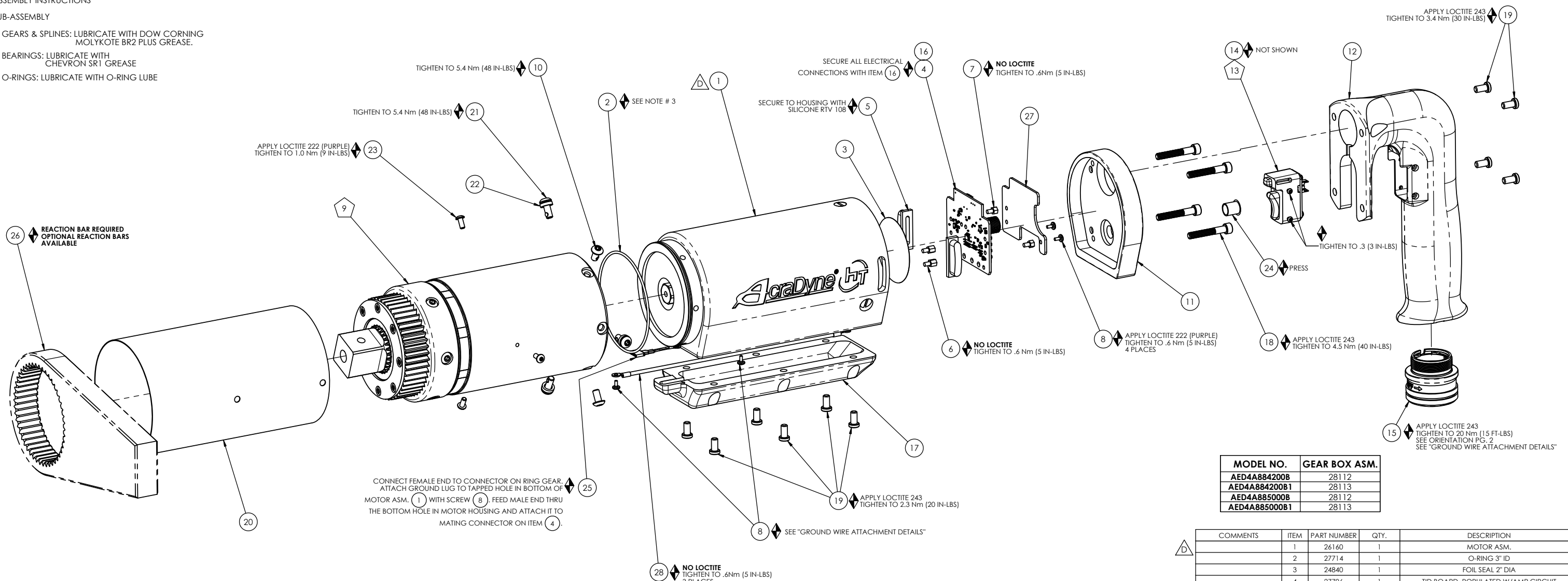


◆ ASSEMBLY INSTRUCTIONS

◇ SUB-ASSEMBLY

- 1) GEARS & SPLINES: LUBRICATE WITH DOW CORNING MOLYKOTE BR2 PLUS GREASE.
- 2) BEARINGS: LUBRICATE WITH CHEVRON SR1 GREASE
- 3) O-RINGS: LUBRICATE WITH O-RING LUBE

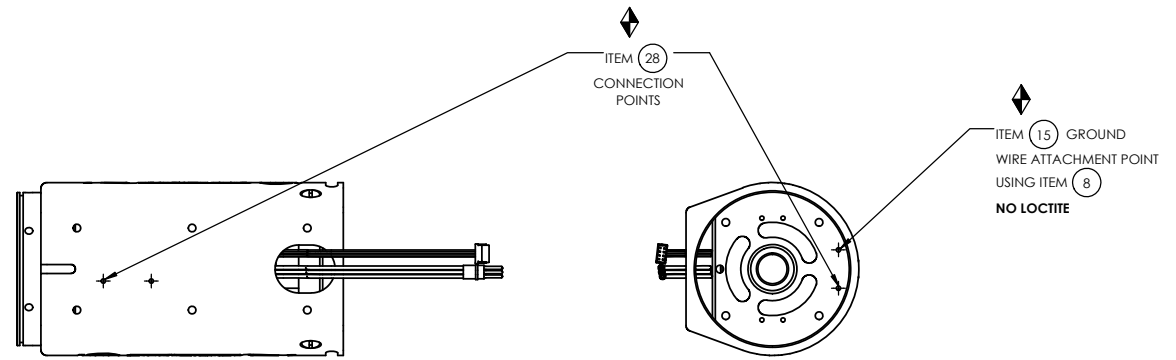
26 ◆ REACTION BAR REQUIRED
OPTIONAL REACTION BARS
AVAILABLE



CONNECT FEMALE END TO CONNECTOR ON RING GEAR. ATTACH GROUND LUG TO TAPPED HOLE IN BOTTOM OF MOTOR ASM. (1) WITH SCREW (8). FEED MALE END THRU THE BOTTOM HOLE IN MOTOR HOUSING AND ATTACH IT TO MATING CONNECTOR ON ITEM (4).

MODEL NO.	GEAR BOX ASM.
AED4A884200B	28112
AED4A884200B1	28113
AED4A885000B	28112
AED4A885000B1	28113

COMMENTS	ITEM	PART NUMBER	QTY.	DESCRIPTION
	1	26160	1	MOTOR ASM.
	2	27714	1	O-RING 3" ID
	3	24840	1	FOIL SEAL 2" DIA
	4	27796	1	TID BOARD, POPULATED W/AMP CIRCUIT
	5	25490	2	LENS, LED, INJECTION MOLDED
	6	29335	4	STANDOFF, M-F, 4-40 X 3/16, SS
	7	29337	3	STANDOFF, M-F, 4-40 X 1/8, SS
	8	25573	8	SCREW PHP 4-40 X 3/16 18-8 SS
	9	SEE CHART	1	GEARBOX ASM.
	10	29279	3	SCREW, BHSC, 10-32 x 3/8, TORX HEAD, NYLON PELL-IT, STEEL
	11	25225	1	END GRIP CAP, HT TOOLS
	12	25229	1	AXIAL HANDLE, HT TOOLS
	13	25212	1	SWITCH SUB-ASSEMBLY
NOT SHOWN	14	25582	1	TRIGGER CABLE
	15	25505	1	TOOL CONNECTOR ASM HERC PISTOL
NOT SHOWN	16	28257	A/R	CABLE TIE, 1.65MM W X 71MM LG.
	17	25231	1	TRAY, WIRE, END GRIP
	18	25568	4	SHC 10-32 x 1.25 BLK OXIDE
	19	25569	10	SCREW LHCS 10-32 X 3/8 18-8 SS
	20	25284	1	HT TOOL TRANSDUCER SLEEVE
	21	29284	3	SCREW, BHSC, 10-32 X 1/2, TORX HEAD, NYLON PELL-IT, STEEL
	22	25564	3	WASHER SHIM .093THK .25ID .375OD
	23	25218	3	SCREW, BHSC, 6-32 X 5/16, SS
	24	25579	1	PLUG 3/8"
	25	28211	1	(4) LINE MALE/FEMALE JUMPER ASM.
	26	26898	1	CHOOSE REACTION BAR
	27	29338	1	TID WIRE INSULATOR
	28	31412	1	GROUND WIRE ASSEMBLY, 18 AWG, 8000 & 9000 HT SERIES
NOT SHOWN	29	24177	N/A	RTV 108, TRANSLUCENT



GROUND WIRE ATTACHMENT DETAILS

RELEASED
By Dina McDermid on Dec 30, 2020



DOCUMENT CONTROL
PRINTED COPIES OF THIS DOCUMENT ARE CONSIDERED TO BE UNCONTROLLED DOCUMENTS. HOLDERS ARE RESPONSIBLE FOR VERIFYING THE CURRENT REVISION LEVEL WITH PURCHASING OR ENGINEERING PRIOR TO USE OR FABRICATION. THE CONTROLLED VERSION OF THIS DOCUMENT IS ELECTRONICALLY MAINTAINED.

PROPRIETARY AND CONFIDENTIAL
THIS DRAWING CONTAINS INFORMATION STRICTLY CONFIDENTIAL TO ACRADYNE/AIMCO. IN THE ABSENCE OF EXPRESSED WRITTEN PERMISSION, ACRADYNE/AIMCO HAS LOANED THIS COPY WITH THE MUTUAL UNDERSTANDING THAT (A) IT WILL NOT BE USED FOR ANY PURPOSE OTHER THAN FOR THAT IN WHICH IT WAS PROVIDED, (B) THE DATA CONTAINED HEREIN WILL NOT BE DISCLOSED TO OTHERS, (C) IT WILL NOT BE REPRODUCED, AND (D) IT WILL BE RETURNED TO ACRADYNE/AIMCO IMMEDIATELY UPON DEMAND.

REVISION LEVEL	REVISION RELEASE DATE	DESCRIPTION OF CHANGES MADE TO PART	ECN #	AUTHOR/ APPROVAL
D	07/20/20	MOTOR 26160 WAS "SEE CHART". 26160 WAS 25224 IN 4200nm TOOL MODELS.	4874	T. BURNETT
C	01/28/20	ADDED 2512: GROUND WIRE ATTACHMENT DETAILS. NO LOCTITE (21) WAS 2522 ON ITEM 9 & 1. LOCTITE 222 WAS 2522 ON ITEM 10 & 21. LOCTITE 2824: 25214 QTY 4. WAS QTY 5. 2.4MM ID IN PLACE. WAS 2.5MM ID IN PLACE ON ITEM 13. 4.0MM ID IN PLACE. WAS 3.0MM ID IN PLACE. ADDED 2877 TO BOM.	3797	T. BURNETT
B	03/23/16	ADDED 29337 & 29338. 29335 WAS 25574. 29284 WAS 25583. 29279 WAS 28015. TIGHTENING TORQUE 5.4Nm WAS 3.4 Nm. LOCTITE 222 (PURPLE) WAS LOCTITE 243 (BLUE).	1821	T. BURNETT
A	10/06/14	PRODUCTION RELEASE	1318	T. BURNETT

UNLESS OTHERWISE SPECIFIED, DIMENSIONS ARE IN INCHES
DIMENSIONS AND TOLERANCING PER ANSI Y14.5 SURFACE ROUGHNESS PER ANSI Y14.36

BLOCK TOLERANCING PER DECIMAL:
X = ±.030 XX = ±.010 XXX = ±.005 XXXX = ±.0005 ANGLE = ±0°30'

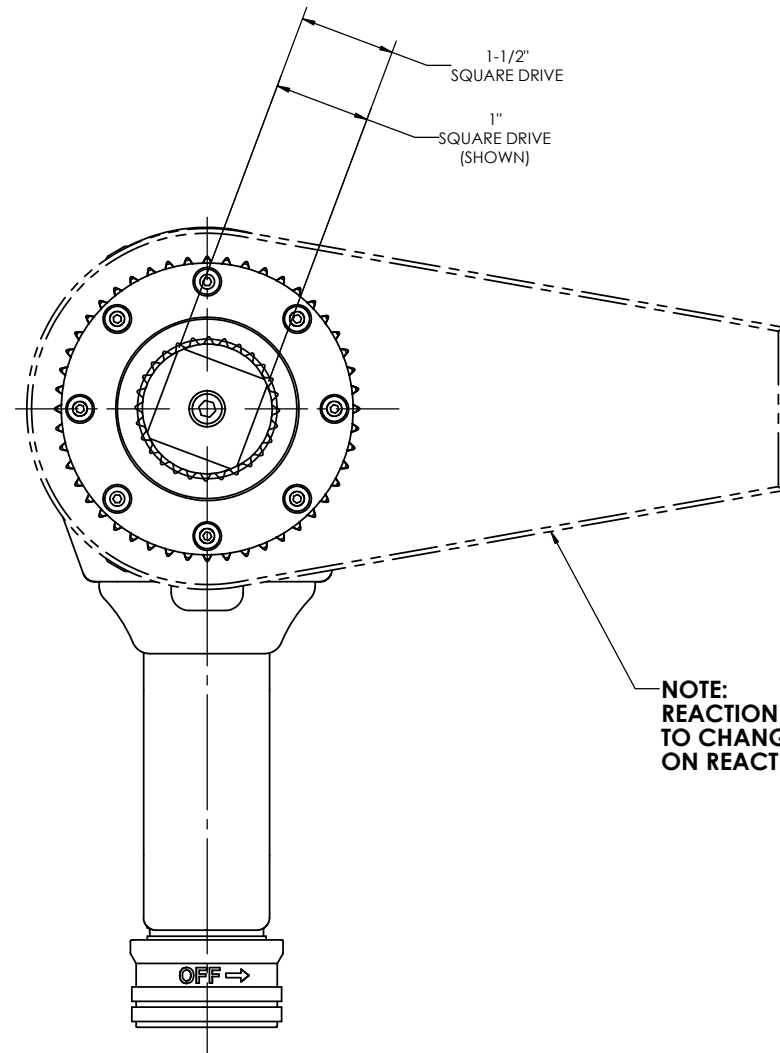
REMOVE BURRS AND SHARP EDGES: R.015 MAX MACHINE SURFACE FINISH: 125 RMS OR BETTER

DRAWINGS AND TECHNICAL DOCUMENTS CONTROLLED BY:
ACRADYNE MECHANICAL ENGINEERING

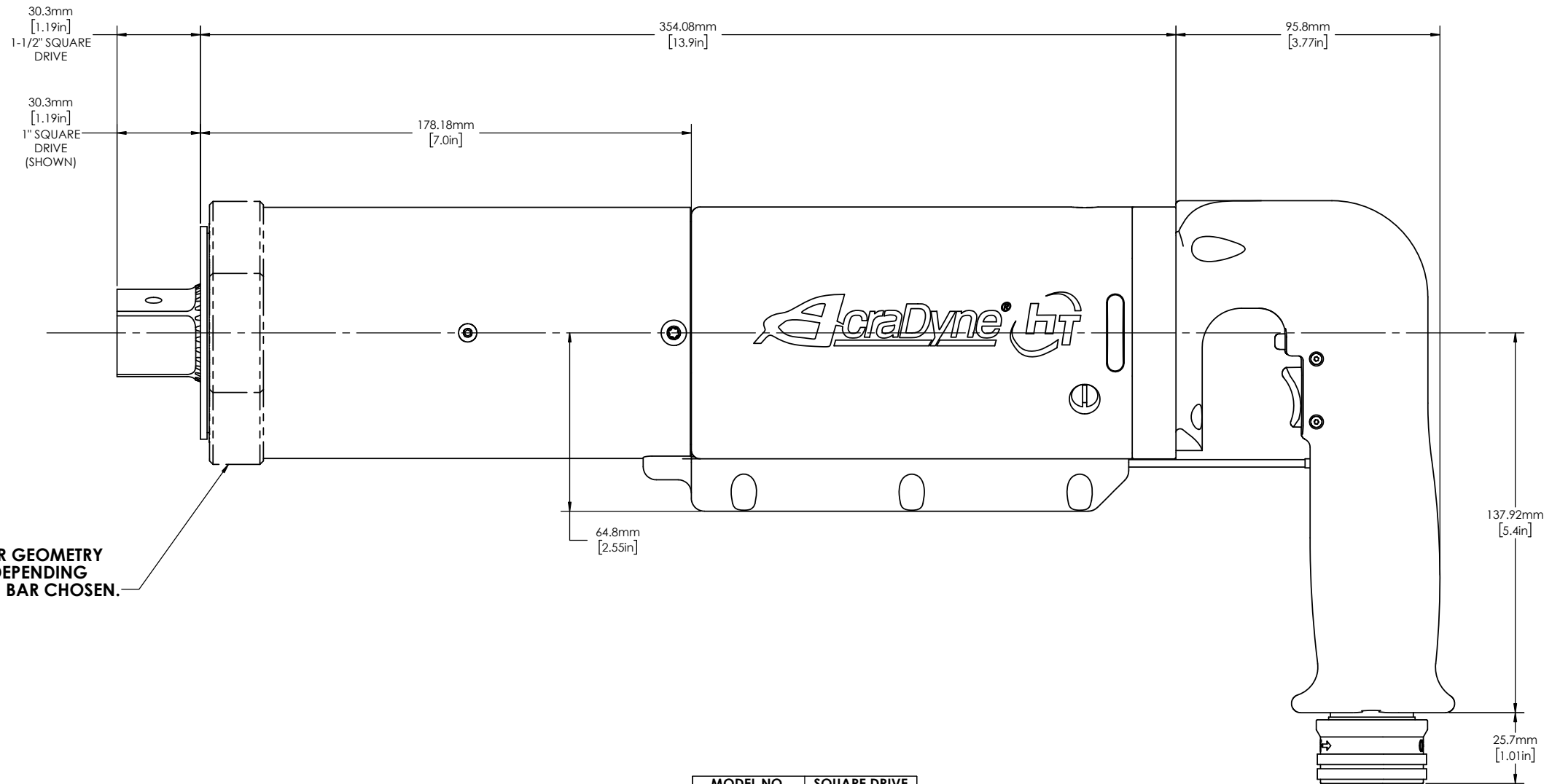
AED4A88 B
"D" HANDLE NUTRUNNER
8000 SERIES

SIZE	PART / DRAWING NUMBER	REVISION
D	AED4A88 B	D

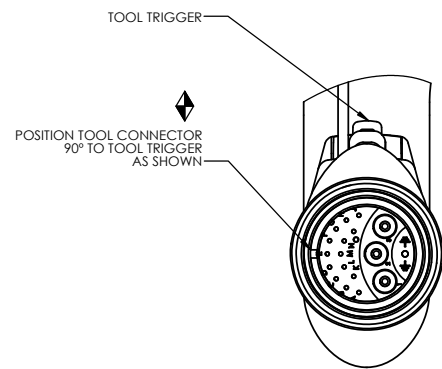
SCALE 2:3 DO NOT SCALE DRAWING SHEET 1 OF 2



NOTE:
REACTION BAR GEOMETRY
TO CHANGE DEPENDING
ON REACTION BAR CHOSEN.



MODEL NO.	SQUARE DRIVE
AED4A884200B	1-1/2"
AED4A884200B1	1"
AED4A885000B	1-1/2"
AED4A885000B1	1"



RELEASED

By Dina McDermed on Dec 30, 2020

 10000 SE PINE STREET PORTLAND, OREGON 97216 503.254.6600	DOCUMENT CONTROL	PRINTED COPIES OF THIS DOCUMENT ARE CONSIDERED TO BE UNCONTROLLED DOCUMENTS. HOLDERS ARE RESPONSIBLE FOR VERIFYING THE CURRENT REVISION LEVEL WITH PURCHASING OR ENGINEERING PRIOR TO USE OR FABRICATION. THE CONTROLLED VERSION OF THIS DOCUMENT IS ELECTRONICALLY MAINTAINED.							UNLESS OTHERWISE SPECIFIED, DIMENSIONS ARE IN INCHES DIMENSIONS AND TOLERANCING PER ANSI Y14.5 SURFACE ROUGHNESS PER ANSI Y14.36 BLOCK TOLERANCING PER DECIMAL: .X = ±.030 .XX = ±.010 .XXX = ±.005 .XXXX = ±.0005 ANGLE = ±0° 30'	"D" HANDLE NUTRUNNER 8000 SERIES
		PROPRIETARY AND CONFIDENTIAL	THIS DRAWING CONTAINS INFORMATION STRICTLY CONFIDENTIAL TO ACRADYNE/AIMCO. IN THE ABSENCE OF EXPRESSED WRITTEN PERMISSION, ACRADYNE/AIMCO HAS LOANED THIS COPY WITH THE MUTUAL UNDERSTANDING THAT (A) IT WILL NOT BE USED FOR ANY PURPOSE OTHER THAN FOR THAT IN WHICH IT WAS PROVIDED, (B) THE DATA CONTAINED HEREIN WILL NOT BE DISCLOSED TO OTHERS, (C) IT WILL NOT BE REPRODUCED, AND (D) IT WILL BE RETURNED TO ACRADYNE/AIMCO IMMEDIATELY UPON DEMAND.							
D	07/20/20	MOTOR 26160 WAS "SEE CHART" 26160 WAS 25224 IN 4200Nm TOOL MODELS.		4874	T. BURNETT					
C	01/28/20	ADDED 2912 GROUND WIRE ATTACHMENT DETAILS. NO LOCTITE (SI) WAS 2922 ON THREA 2 F. 3.0000 LOCTITE WAS 2924 ON THREA 2 F. 3.0000 2927 GRY 2 WAS GRY 2. 3.4000 IN RLEER WAS 2.0000 IN RLEER ON ITEM 10. 3.4000 IN RLEER WAS 2.4000 IN RLEER. ADDED 2977 RTU TO SCH.		3797	T. BURNETT					
B	03/23/16	ADDED 29337 & 29338 29336 WAS 25574 29284 WAS 25583 29279 WAS 26015. TIGHTENING TORQUE 5.4Nm WAS 3.4 Nm LOCTITE 222 (PURPLE) WAS LOCTITE 243 (BLUE).		1821	T. BURNETT					
A	10/06/14	PRODUCTION RELEASE		1318	T. BURNETT					
REVISION LEVEL	REVISION RELEASE DATE	DESCRIPTION OF CHANGES MADE TO PART		ECN #	AUTHOR/ APPROVAL					
REVISION BLOCK										
DRAWINGS AND TECHNICAL DOCUMENTS CONTROLLED BY:										
ACRADYNE MECHANICAL ENGINEERING										
SIZE	PART / DRAWING NUMBER	REVISION								
D	AED4A88	B	D							
SCALE: 1:1	DO NOT SCALE DRAWING				SHEET 2 OF 2					