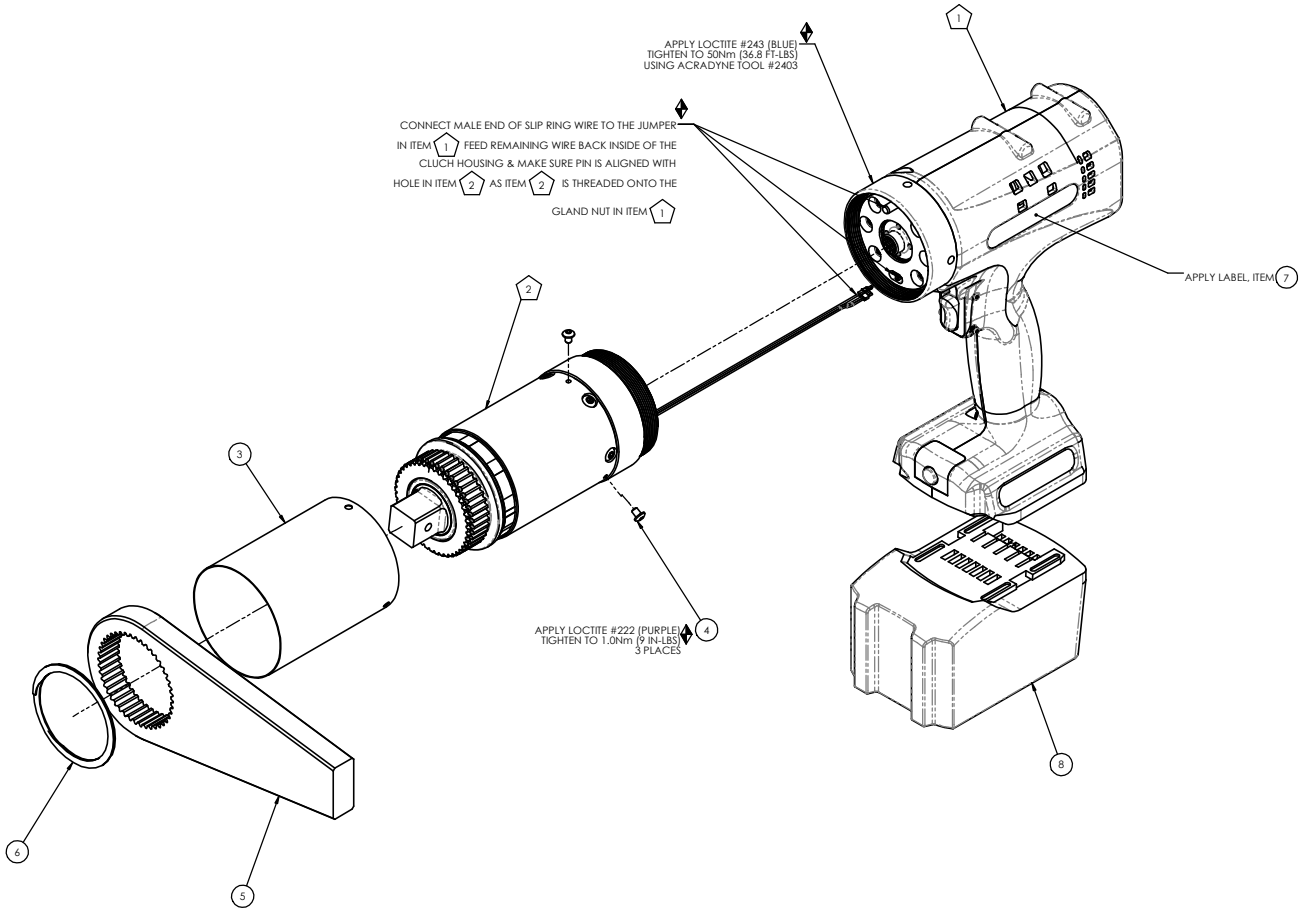


COMMENTS	ITEM NO.	PART NUMBER	QTY.	DESCRIPTION
	1	32360.002	1	HT PISTOL HANDLE ASSEMBLY
	2	SEE CHART	1	GEARBOX/SLIP RING ASM., HT 6000-SERIES
	3	26495	1	GEAR CASE COVER
	4	26319	3	SCREW, BH5C 6-32 X .188, 18-8 SS
	5	26896	1	CHOOSE REACTION BAR
	6	26514	1	RETAINING RING, SPIRAL, Ø2.441 X Ø2.105 X .078
NOT SHOWN	7	32481	2	LABEL, CORDLESS SERIES HT TOOLS
	8	625368000	1	BATTERY, 5.5Ah, 18V, LIION

TOOL MODEL	GEARBOX ASM
ACP4B16225ADL	32476
ACP4B16425ADL	32475
ACP4B16625ADL	32474
ACP4B16925ADL	31926



- ◆ ASSEMBLY INSTRUCTIONS
- ◻ SUB-ASSEMBLY
- 1) GEARS & SPLINES: LUBRICATE WITH DOW CORNING MOLYKOTE BR2 PLUS GREASE.
- 2) BEARINGS: LUBRICATE WITH CHEVRON SR1 GREASE
- 3) O-RINGS: LUBRICATE WITH O-RING LUBE



DOCUMENT CONTROL
 PRINTED COPIES OF THIS DOCUMENT ARE CONSIDERED TO BE UNCONTROLLED DOCUMENTS. HOLDERS ARE RESPONSIBLE FOR VERIFYING THE CURRENT REVISION LEVEL. WITH PURCHASING OR ENGINEERING PRIOR TO USE OR FABRICATION, THE CONTROLLED VERSION OF THIS DOCUMENT IS ELECTRONICALLY MAINTAINED.

PROPRIETARY AND CONFIDENTIAL
 THIS DRAWING CONTAINS INFORMATION STRICTLY CONFIDENTIAL TO ACRADYNE/AIMCO. IN THE ABSENCE OF EXPRESSED WRITTEN PERMISSION, ACRADYNE/AIMCO HAS LOANED THIS COPY WITH THE MUTUAL UNDERSTANDING THAT ALL IT WILL NOT BE USED FOR ANY PURPOSE OTHER THAN FOR THAT IN WHICH IT WAS PROVIDED. IF THE DATA CONTAINED HEREIN WILL NOT BE DISCLOSED TO OTHERS, (C) IT WILL NOT BE REPRODUCED, AND (D) IT WILL BE RETURNED TO ACRADYNE/AIMCO IMMEDIATELY UPON DEMAND.

REVISION LEVEL	REVISION RELEASE DATE	DESCRIPTION OF CHANGES MADE TO PART	ECN #	AUTHOR	APPROVAL

UNLESS OTHERWISE SPECIFIED, DIMENSIONS ARE IN INCHES. DIMENSIONS AND TOLERANCING PER ANSI Y14.5 SURFACE ROUGHNESS PER ANSI Y14.36

BLOCK TOLERANCING PER DECIMAL:
 X = ±.030 XX = ±.010 XXX = ±.005 XXXX = ±.0005 ANGLE = 40° ± 30°

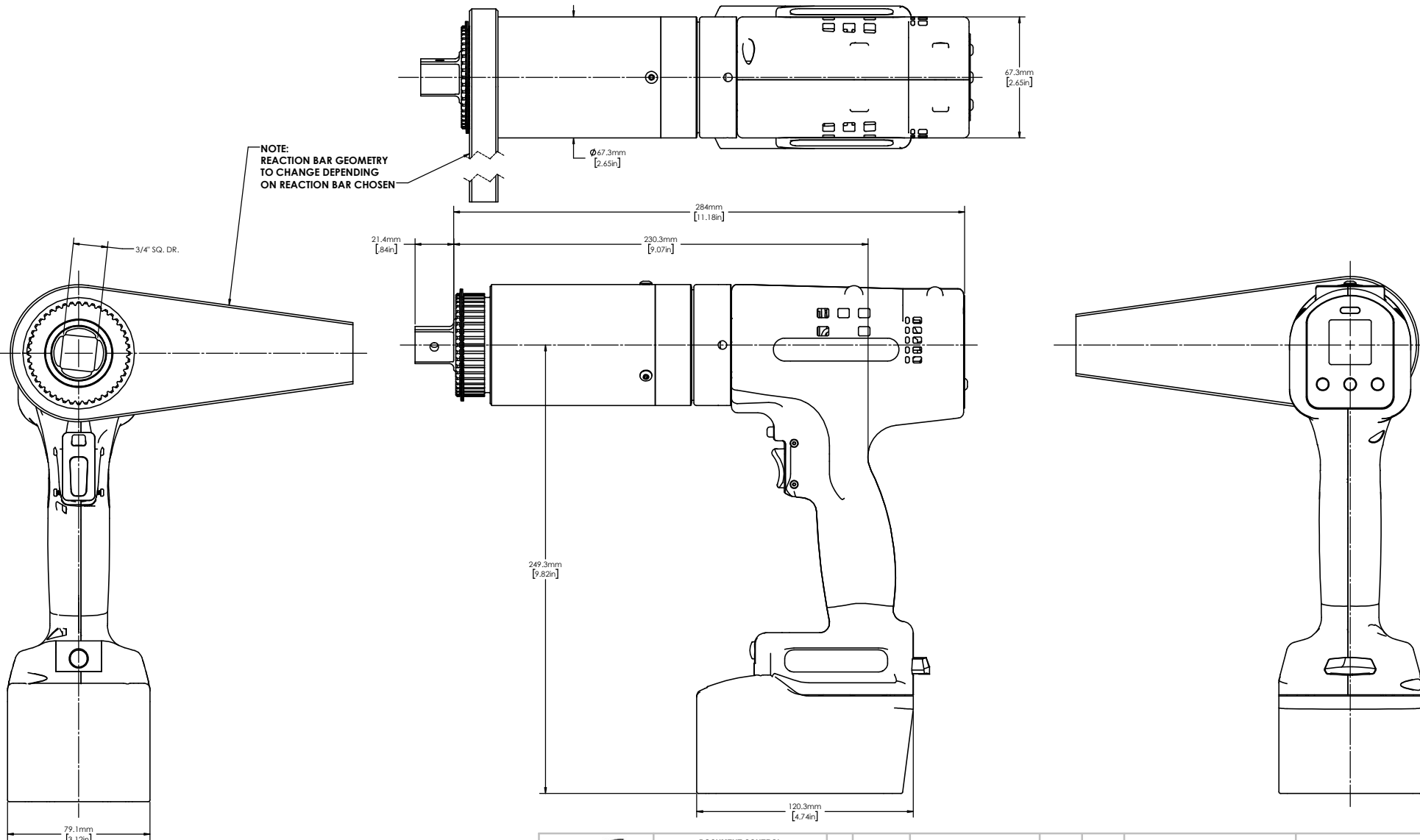
REMOVE BURRS AND SHARP EDGES: R.015 MAX MACHINE SURFACE FINISH: 125 RMS OR BETTER

DRAWINGS AND TECHNICAL DOCUMENTS CONTROLLED BY: ACRADYNE MECHANICAL ENGINEERING

HT PISTOL NUTRUNNER, 6000 SERIES
CORDLESS SERIES

SIZE: PART / DRAWING NUMBER: **D ACP4B16** / **ADL** REVISION: **A**

SCALE: 3/4 DO NOT SCALE DRAWING SHEET 1 OF 2



NOTE:
REACTION BAR GEOMETRY
TO CHANGE DEPENDING
ON REACTION BAR CHOSEN

3/4" SQ. DR.



10000 SE PINE STREET
PORTLAND, OREGON 97216
503.254.6900

DOCUMENT CONTROL
PRINTED COPIES OF THIS DOCUMENT ARE CONSIDERED TO BE UNCONTROLLED DOCUMENTS. HOLDERS ARE RESPONSIBLE FOR VERIFYING THE CURRENT REVISION LEVEL. WITH PURCHASING OR ENGINEERING PRIOR TO USE OR FABRICATION. THE CONTROLLED VERSION OF THIS DOCUMENT IS ELECTRONICALLY MAINTAINED.

PROPRIETARY AND CONFIDENTIAL
THIS DRAWING CONTAINS INFORMATION STRICTLY CONFIDENTIAL TO ACRADYNE/AIMCO. IN THE ABSENCE OF EXPRESSED WRITTEN PERMISSION FROM ACRADYNE/AIMCO, THIS COPY WILL NOT BE USED FOR ANY PURPOSE OTHER THAN FOR THAT IN WHICH IT WAS PROVIDED. IF THE DATA CONTAINED HEREIN WILL NOT BE DISCLOSED TO OTHERS, (C) IT WILL NOT BE REPRODUCED, AND (D) IT WILL BE RETURNED TO ACRADYNE/AIMCO IMMEDIATELY UPON DEMAND.

REVISION LEVEL	REVISION RELEASE DATE	DESCRIPTION OF CHANGES MADE TO PART	ECN #	AUTHOR/ APPROVAL

UNLESS OTHERWISE SPECIFIED,
DIMENSIONS ARE IN INCHES
DIMENSIONS AND TOLERANCING PER ANSI Y14.5
SURFACE ROUGHNESS PER ANSI Y14.36

BLOCK TOLERANCING PER DECIMAL:
X = ±0.030 XX = ±0.010 XXX = ±0.005 XXXX = ±0.0005
ANGLE = 40° ± 30°

REMOVE BURRS AND SHARP EDGES: R.015 MAX
MACHINE SURFACE FINISH: 125 RMS OR BETTER
DRAWINGS AND TECHNICAL DOCUMENTS CONTROLLED BY:
ACRADYNE MECHANICAL ENGINEERING

**HT PISTOL NUTRUNNER,
6000 SERIES**
CORDLESS SERIES

SIZE PART / DRAWING NUMBER REVISION
D ACP4B16 ADL A
SCALE 1:1 DO NOT SCALE DRAWING SHEET 2 OF 2