



MOMENT ALPHA PRECISION DIGITAL TORQUE WRENCH WITH ANGLE

ENSURE ACCURACY IN QUALITY OR PRODUCTION APPLICATIONS

FEATURES

- Torque *and* angle measurement
- Modular system with self-identifying accessories
- Wireless delivery WiFi/Bluetooth
- One wrench/tablet analyzer to perform audits in full torque range from 0.5 – 1,000 Nm (with optional accessories)
 - Screwdriver mode from 0.5 – 5 Nm
 - Flexion mode (wrench) from 4 – 1,000 Nm
- Works in both clockwise and counter-clockwise operation
- Uses standard drive adapters
- Tactile feedback to operator
- Rechargeable battery pack (wrench handle)



| KIT MODEL* | PARTS INCLUDED |
|------------|---|
| Production | |
| CPSKS00 | Includes (1) Wrench, (1) Wrench Battery, (1) Battery Charger, (1) 40 Nm Adapter, (1) Production Controller, Production Premium Software, (1) 200 Nm Extension, (1) 600 Nm Extension, and (1) 14 x 18 Ratchet Head |
| CPSMH00 | Includes (1) Wrench, (1) Wrench Battery, (1) Battery Charger, (1) 40 Nm adapter, (1) Production Controller, and Production Premium Software |
| Quality | |
| CPSKU00 | Includes (1) Wrench, (1) Wrench Battery, (1) Battery Charger, (1) 40 Nm Adapter, (1) Quality Controller, Quality Premium Software, (1) 200 Nm Extension, (1) 600 Nm Extension, and (1) 14 x 18 Ratchet Head |
| CPSMJ00 | Includes (1) Wrench, (1) Wrench Battery, (1) Battery Charger, (1) 40 Nm Adapter, (1) Quality Controller, Quality Premium Software |

* Additional kits available. Contact an AIMCO Customer Service Associate, 1-800-852-1368.

| WRENCH HANDLE | TORQUE RANGE | LENGTH | WEIGHT | TORQUE TRANSDUCER ACCURACY | TIGHTENING ACCURACY | ANGLE TRANSDUCER ACCURACY |
|---------------|---|----------------|--------------------|----------------------------|---------------------|---------------------------|
| CPSKV00 | Screwdriver Mode: 0.5 - 5 Nm Wrench Mode: 4 - 40 Nm (requires CPSJP81 adapter) 4 - 1,000 Nm (with appropriate extension*) | 7.9" 200 mm | 0.82 lb 0.37 kg | ISO 6789 < 1% | < ±4% | ±1% |

* Wrench handle supplied with battery. Specific extensions for specific torques available separately. Contact an AIMCO Customer Service Associate, 1-800-852-1368.

REMOTE DISPLAY



CPSKR82

FEATURES

- Pre-set tightening settings
- Audible alarm
- Four tightening modes: Torque, Angle, Torque and Angle, Angle and Torque
- 2.4" color display touchscreen
- International units: Nm, kg/m, kp/m, ft-lb, in-lb, ft-oz, in-oz
- Sturdy and suited to industrial environments

| MODEL | DESCRIPTION | SIZE | WEIGHT |
|---------|--------------------------------------|---|--------------------|
| CPSKR81 | Production Controller w/out software | 7.1" x 13.8" x 5.9" 180 x 350 x 150 mm | 7.05 lbs 3.2 kg |
| CPSKR82 | Quality Controller w/out software | 8.7" x 5.4" x 1.3" 221 x 138 x 32 mm | 1.05 lbs 0.5 kg |
| CPSKS50 | Production Premium Software | - | - |
| CPSKU50 | Quality Premium Software | - | - |

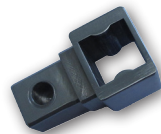
ACCESSORIES



CPSJP75
Battery Unit



CPSJP73
Battery
Charger



CPSJP81
40 Nm Adapter

CPSKS82
600 Nm Extension



CPSKS81
200 Nm Extension

| MODEL | DESCRIPTION | SIZE | END EFFECTOR CONNECTION | WEIGHT |
|---------|---|-------------------|-------------------------|---------------------|
| CPSJP75 | Battery Unit (includes 3 rechargeable AA batteries) | - | - | - |
| CPSJP73 | Battery Charger | - | - | - |
| CPSJP81 | Adapter 40 Nm | 3.5" / 89 mm | - | 0.03 lbs 0.01 kg |
| CPSKS86 | Extension 100 Nm | 5.71" / 145 mm | 14 x 18* | 0.06 lbs 0.03 kg |
| CPSKS81 | Extension 200 Nm | 14.41" / 366 mm | 14 x 18* | 1.1 lbs 0.5 kg |
| CPSKS85 | Extension 300 Nm | 27.06" / 688 mm | 14 x 18* | 2.6 lbs 1.2 kg |
| CPSKS87 | Extension 400 Nm | 30.27" / 769 mm | 14 x 18* | 3.08 lbs 1.4 kg |
| CPSKS82 | Extension 600 Nm | 42.72" / 1,085 mm | 14 x 18* | 5.07 lbs 2.3 kg |
| CPSKS88 | Extension 1,000 Nm | 70.86" / 1,800 mm | 1 in.* | 5.07 lbs 2.3 kg |

* End Effectors sold separately. Contact an AIMCO Customer Service Associate, 1-800-852-1368.



Corporate Headquarters
10000 S.E. Pine St.
Portland, OR 97216
Phone: (800) 852-1368
Fax (800) 582-9015

AIMCO Mexico
Ave. Cristóbal Colon 14529
Chihuahua, Chihuahua. 31125
Mexico
Phone: +52-(614) 380-1010
Fax +52 (614) 380-1019

AIMCO Europe
Avenida Rio Gallo, 431
19174 Galápagos - Guadalajara
Spain
Phone: + 34 673 34 99 25

AIMCO China
Room 607, No. 3998 Hongxin Rd
Minhang District, Shanghai
China
Phone: 0086-21-34319246
Fax: 0086-21-34319245

AIMCO South America
Carrera 29A, #7B-91.
Origami Building, Int604
Medellin; Colombia
050021

Rev. 04-28-17
Printed in USA
©2017 AIMCO