

FASTENER TOOLS

2024/2025

Standard Fastener Tools

STANDARD FASTENER TOOLS

Connect your tool to the application with Bits, Sockets, and Nutsetters from AIMCO

AIMCO has assembled a complete package of commonly used screwdriver bits and nutsetters. Our goal is to supply you with the highest quality bits and nutsetters for your fastener needs. Whether you're in electronics, aerospace, automotive, or general industry, AIMCO has the bits and nutsetters to fit your needs.

MAG-O-NETS®: A Revolutionary Way to Convert Standard Bits to Magnetic Bits

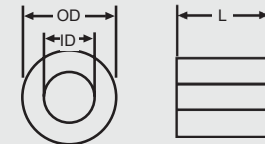
FEATURES AND BENEFITS

- Easy, cost effective alternative to traditional magnetic bit holder and insert bit combination
- Improves torque transfer by eliminating "wobble effect"
- Easily adjust magnetic attraction by moving Mag-O-Net collar closer to or further from fastener
- Fits virtually any standard screwdriver bit
- Reusable and interchangeable – once a bit is worn out, simply remove your Mag-O-Net and slide it onto the next bit
- Lifetime guarantee on magnetic attraction



*U.S. Patent 5861789

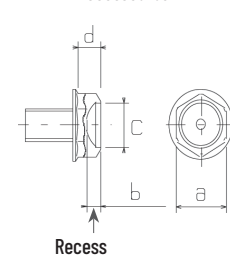
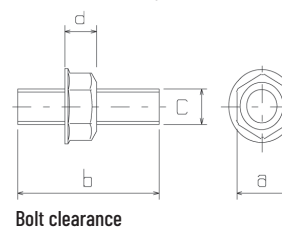
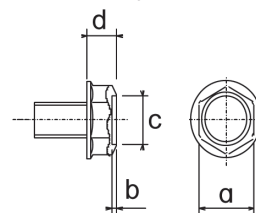
| Part No | Inner Diameter (Id) | Outer Diameter (OD) | L MM |
|---------|---------------------|---------------------|------|
| AM1/4Z | 7 mm | 19 mm | 10 |
| AM5Z | 6 mm | 17,5 mm | 10 |
| AM3/16Z | 3/16 in | 17,5 mm | 10 |
| AM5/16Z | 5/16 in | 20 mm | 10 |



MARKER SOCKETS

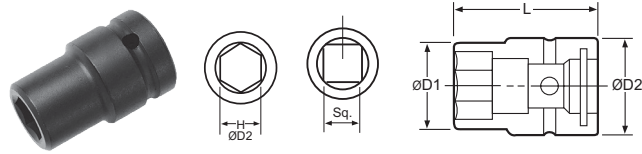
Marker Sockets paint the bolt head at the same time the torque is checked. Sockets are designed to your specification.

- Unit consists of a marker socket, an ink cartridge, a spring, and the cartridge cap
- Cartridge can be inserted/taken off easily for ink management
- Easily replaceable paint point
- Can be used with either oil-based or water-based inks
- When ordering, provide dimensions shown. To order, contact an AIMCO Customer Service Associate 1-503-254-6600, or toll free 1-800-852-1368



Standard Fastener Tools

IMPACT SOCKETS



| | Part No | Hex | D1 MM | D1 IN | D2 MM | D2 IN | L MM | L IN |
|--------|------------------------------------|-------|----------|----------|----------|----------|---------|---------|
| SAE | 3/8" Square Drive | | | | | | | |
| | A31/4 | 1/4" | 10 | 0.39 | 19 | 0.75 | 34 | 1.34 |
| | A35/16 | 5/16" | 12 | 0.47 | 19 | 0.75 | 34 | 1.34 |
| | A33/8 | 3/8" | 15 | 0.59 | 19 | 0.75 | 34 | 1.34 |
| | A306 | 6 mm | 10 | 0.39 | 19 | 0.75 | 34 | 1.34 |
| | A307 | 7 mm | 13 | 0.49 | 20 | 0.79 | 32 | 1.26 |
| Metric | A308 | 8 mm | 14 | 0.55 | 20 | 0.79 | 32 | 1.26 |
| | 3/8" Square Drive, Deep | | | | | | | |
| | A307-2 | 7 mm | 13 | 0.49 | 20 | 0.79 | 50 | 1.97 |
| | A307-2.75 | 7 mm | 13 | 0.49 | 20 | 0.79 | 70 | 2.76 |
| | A308-2 | 8 mm | 14 | 0.55 | 20 | 0.79 | 50 | 1.97 |
| SAE | 3/8" Square Drive, Magnetic | | | | | | | |
| | A31/4MP | 1/4" | 10 | 0.39 | 19 | 0.75 | 34 | 1.34 |
| | A35/16MP | 5/16" | 12 | 0.47 | 19 | 0.75 | 34 | 1.34 |
| | A33/8MP | 3/8" | 15 | 0.59 | 19 | 0.75 | 34 | 1.34 |
| | A308MP | 8 mm | 14 | 0.55 | 20 | 0.79 | 32 | 1.26 |
| | A310MP | 10 mm | 17 | 0.65 | 20 | 0.79 | 32 | 1.26 |
| Metric | A311MP | 11 mm | 17 | 0.65 | 19 | 0.75 | 34 | 1.34 |
| | 1/2" Square Drive | | | | | | | |
| | A43/8 | 3/8" | 16 | 0.63 | 25 | 0.98 | 38 | 1.50 |
| | A47/16 | 7/16" | 18 | 0.69 | 25 | 0.98 | 38 | 1.50 |
| | A41/2 | 1/2" | 19 | 0.75 | 25 | 0.98 | 50 | 1.97 |
| SAE | A408 | 8 mm | 16 | 0.61 | 25 | 0.98 | 40 | 1.58 |
| | A409 | 9 mm | 16 | 0.63 | 25 | 0.98 | 40 | 1.58 |
| | A410 | 10 mm | 18 | 0.69 | 25 | 0.98 | 40 | 1.58 |
| | 1/2" Square Drive, Deep | | | | | | | |
| | A43/8-3.25 | 3/8" | 17 | 0.67 | 25 | 0.98 | 82 | 3.23 |
| | A47/16-3.25 | 7/16" | 19 | 0.73 | 25 | 0.98 | 82 | 3.23 |
| | A41/2-3.25 | 1/2" | 22 | 0.85 | 25 | 0.98 | 82 | 3.23 |

| | Part No | Hex | D1 MM | D1 IN | D2 MM | D2 IN | L MM | L IN |
|------------------------------------|--------------------------------|--------|----------|----------|----------|----------|---------|---------|
| Metric | A410-2 | 10 mm | 18 | 0.69 | 25 | 0.98 | 50 | 1.97 |
| | A410-3 | 10 mm | 18 | 0.69 | 25 | 0.98 | 75 | 2.95 |
| | A410-3.25 | 10 mm | 17 | 0.67 | 25 | 0.98 | 82 | 3.23 |
| | A411-3.25 | 11 mm | 19 | 0.73 | 25 | 0.98 | 82 | 3.23 |
| 1/2" Square Drive, Magnetic | | | | | | | | |
| | A408MP | 8 mm | 16 | 0.61 | 25 | 0.98 | 40 | 1.58 |
| | A410MP | 10 mm | 18 | 0.69 | 25 | 0.98 | 40 | 1.58 |
| | A412MP | 12 mm | 21 | 0.81 | 25 | 0.98 | 40 | 1.58 |
| SAE | 3/4" Square Drive | | | | | | | |
| | A611/16 | 11/16" | 30 | 1.18 | 44 | 1.73 | 50 | 1.97 |
| | A63/4 | 3/4" | 32 | 1.26 | 44 | 1.73 | 50 | 1.97 |
| | A613/16 | 13/16" | 35 | 1.38 | 44 | 1.73 | 50 | 1.97 |
| | A614 | 14 mm | 24 | 0.95 | 38 | 1.50 | 55 | 2.17 |
| | A616 | 16 mm | 27 | 1.06 | 44 | 1.73 | 50 | 1.97 |
| Metric | A617 | 17 mm | 30 | 1.18 | 38 | 1.50 | 55 | 2.17 |
| | 3/4" Square Drive, Deep | | | | | | | |
| | A611/16-4 | 11/16" | 31 | 1.22 | 44 | 1.73 | 100 | 3.94 |
| | A63/4-4 | 3/4" | 33 | 1.30 | 44 | 1.73 | 100 | 3.94 |
| | A613/16-4 | 13/16" | 36 | 1.42 | 44 | 1.73 | 100 | 3.94 |
| SAE | A617-4 | 17 mm | 31 | 1.22 | 44 | 1.73 | 100 | 3.94 |
| | A618-4 | 18 mm | 32 | 1.26 | 44 | 1.73 | 100 | 3.94 |
| | A619-4 | 19 mm | 33 | 1.30 | 38 | 1.50 | 100 | 3.94 |
| | 1" Square Drive | | | | | | | |
| | A87/8 | 7/8" | 37 | 1.46 | 54 | 2.13 | 59 | 2.32 |
| | A815/16 | 15/16" | 38 | 1.50 | 54 | 2.13 | 59 | 2.32 |
| | A81 | 1" | 41 | 1.61 | 54 | 2.13 | 59 | 2.32 |
| Metric | A817 | 17 mm | 31 | 1.22 | 50 | 1.97 | 63 | 2.48 |
| | A819 | 19 mm | 33 | 1.30 | 50 | 1.97 | 63 | 2.48 |
| | A821 | 21 mm | 37 | 1.46 | 50 | 1.97 | 63 | 2.48 |

Additional types and sizes of fastener tools, as well as custom parts, are available upon request. Contact an AIMCO Customer Service Associate at 1-503-254-6600, or toll free 1-800-852-1368.

ANTI-MARRING SOCKETS

AIMCO's anti-marring sockets have a protective resin cover that spins freely, preventing damage to application surfaces, and protecting fingers.



CV Series



CVF Series

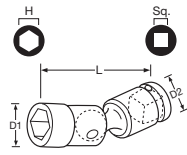


CVF Series with Bit Attachment



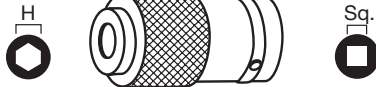
Standard Fastener Tools

UNIVERSAL SOCKETS



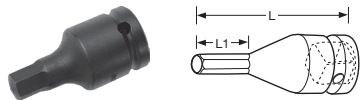
| Part No | Hex | D1 MM | D1 IN | D2 MM | D2 IN | L MM | L IN |
|--------------------------|-------|----------|----------|----------|----------|---------|---------|
| 3/8" Square Drive | | | | | | | |
| A310U | 10 mm | 16 | 0.63 | 20 | 0.79 | 55 | 2.17 |
| A311U | 11 mm | 16 | 0.63 | 20 | 0.79 | 60 | 2.36 |
| 1/2" Square Drive | | | | | | | |
| A412U | 12 mm | 20.5 | 0.81 | 25 | 0.98 | 70 | 2.76 |
| A413U | 13 mm | 19 | 0.75 | 24 | 0.95 | 70 | 2.76 |

QUICK CHANGE CHUCKS



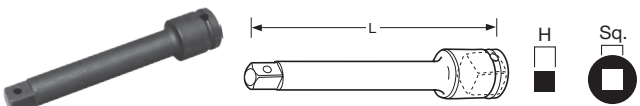
| Part No | Sq Drive | Hex | D1 MM | D1 IN | L MM | L IN |
|--------------|-------------|-------|----------|----------|---------|---------|
| ADC-2S | 1/4" | 1/4" | 19 | 0.75 | 38 | 1.50 |
| ADC-3S | 3/8" | 1/4" | 20 | 0.79 | 42 | 1.65 |
| ADC-4S | 1/2" | 1/4" | 19 | 0.75 | 46 | 1.81 |
| ADC-3SH7/16Z | 3/8" | 7/16" | 25 | 0.98 | 46 | 1.81 |
| ADC-4SH7/16Z | 1/2" | 7/16" | 33 | 1.30 | 55 | 2.17 |

ALLEN SOCKETS



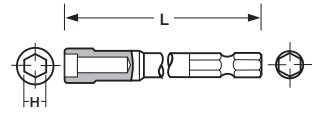
| Part No | Hex | L1 MM | L1 IN | L MM | L IN |
|--------------------------|------|----------|----------|---------|---------|
| 3/8" Square Drive | | | | | |
| A31/4C | 1/4" | 10 | 0.39 | 42 | 1.65 |
| A304C | 4 mm | 10 | 0.39 | 42 | 1.65 |
| 1/2" Square Drive | | | | | |
| A41/4C | 1/4" | 25 | 0.98 | 50 | 1.97 |
| A405C | 5 mm | 25 | 0.98 | 50 | 1.97 |

EXTENSIONS



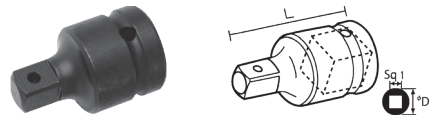
| Part No | Sq Drive | Hex | L MM | L IN | D MM | D IN |
|---------|-------------|--------|---------|---------|---------|---------|
| A375E | 3/8" | 3/8" | 75 | 2.95 | 20 | 0.79 |
| A405E | 1/2" | 1/2" | 51 | 2.01 | 30 | 1.18 |
| A610E | 3/4" | 3/4" | 100 | 3.94 | 44 | 1.73 |
| A810E | 1" | 1" | 102 | 4.02 | 54 | 2.13 |
| A1220E | 1-1/4" | 1-1/4" | 200 | 7.87 | 60 | 2.36 |
| A1418E | 1-1/2" | 1-1/2" | 178 | 7.01 | 84 | 3.31 |
| A2426E | 2-1/2" | 2-1/2" | 264 | 10.39 | 137 | 5.39 |

NUTSETTERS



| PART NO | HEX | L MM | L IN |
|-------------|--------|---------|---------|
| A3B1/4-2 | 1/4" | 50 | 1.97 |
| A3B1/4-2.5 | 1/4" | 63 | 2.50 |
| A3B5/16-2 | 5/16" | 50 | 1.97 |
| A3B5/16-2.5 | 5/16" | 63 | 2.50 |
| A3B3/8-2 | 3/8" | 50 | 1.97 |
| A3B3/8-2.5 | 3/8" | 63 | 2.50 |
| A3B05-2.75 | 5 mm | 70 | 2.76 |
| A3B55-1.2 | 5.5 mm | 30 | 1.18 |
| A3B55-2.75 | 5.5 mm | 70 | 2.76 |
| A3B55-4 | 5.5 mm | 100 | 3.94 |
| A3B06-2.75 | 6 mm | 70 | 2.76 |
| A3B07-1.2 | 7 mm | 30 | 1.18 |
| A3B07-2 | 7 mm | 50 | 1.97 |
| A3B07-2.75 | 7 mm | 70 | 2.76 |
| A3B07-4 | 7 mm | 100 | 3.94 |
| A3B08-1.2 | 8 mm | 30 | 1.18 |
| A3B08-2 | 8 mm | 50 | 1.97 |
| A3B08-2.75 | 8 mm | 70 | 2.76 |
| A3B08-4 | 8 mm | 100 | 3.94 |
| A3B08-6 | 8 mm | 150 | 5.91 |
| A3B08-8 | 8 mm | 200 | 7.87 |
| A3B09-2.75 | 9 mm | 70 | 2.76 |
| A3B09-4 | 9 mm | 100 | 3.94 |
| A3B10-1.2 | 10 mm | 30 | 1.18 |
| A3B10-2 | 10 mm | 50 | 1.97 |
| A3B10-2.75 | 10 mm | 70 | 2.76 |
| A3B11-2.75 | 11 mm | 70 | 2.76 |
| A3B12-1.2 | 12 mm | 30 | 1.18 |
| A3B13-2.75 | 13 mm | 70 | 2.76 |
| A3B14-2.75 | 14 mm | 70 | 2.76 |
| A3B16-2.75 | 16 mm | 70 | 2.76 |
| A3B17-2.75 | 17 mm | 70 | 2.76 |

SOCKET ADAPTERS

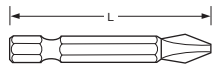


| Part No | Female Sq. Drive | Male Sq. Drive | D MM | D IN | L MM | L IN |
|---------|---------------------|-------------------|---------|---------|---------|---------|
| A302A | 3/8" | 1/4" | 22 | 0.87 | 35 | 1.38 |
| A403A | 1/2" | 3/8" | 25 | 0.98 | 37 | 1.46 |
| A504A | 5/8" | 1/2" | 35 | 1.38 | 47 | 1.46 |
| A604A | 3/4" | 1/2" | 38 | 1.50 | 53 | 2.09 |
| A806A | 1" | 3/4" | 50 | 1.97 | 70 | 2.76 |
| A128A | 1-1/4" | 1" | 60 | 2.36 | 76 | 2.99 |
| A#508A | Spline #5 | 1" | 60 | 2.36 | 90 | 3.54 |

Additional types and sizes of fastener tools, as well as custom parts, are available upon request. Contact an AIMCO Customer Service Associate at 1-503-254-6600, or toll free 1-800-852-1368.

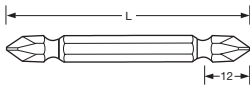
Standard Fastener Tools

PHILLIPS POWER BITS



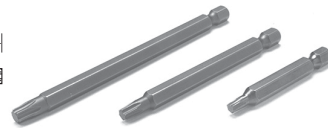
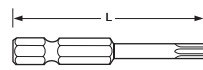
| Part No | Point Size | L MM | L IN |
|-----------|------------|------|------|
| A3S0-2 | 0 | 50 | 1.97 |
| A3S1-2 | 1 | 50 | 1.97 |
| A3S1-2.75 | 1 | 70 | 2.76 |
| A3S1-3 | 1 | 75 | 2.95 |
| A3S1-3.5 | 1 | 90 | 3.54 |
| A3S1-4 | 1 | 100 | 3.94 |
| A3S1-6 | 1 | 150 | 5.91 |
| A3S2-1.2 | 2 | 30 | 1.18 |
| A3S2-1.6 | 2 | 40 | 1.57 |
| A3S3-2 | 3 | 50 | 1.97 |
| A3S3-2.75 | 3 | 70 | 2.76 |

Double-Ended



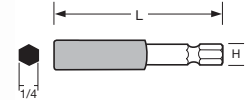
| | | | |
|---------|---|-----|-------|
| A3W1-3 | 1 | 75 | 2.94 |
| A3W2-2 | 2 | 50 | 1.97 |
| A3W2-3 | 2 | 75 | 2.94 |
| A3W2-4 | 2 | 100 | 3.94 |
| A3W2-6 | 2 | 150 | 5.91 |
| A3W2-8 | 2 | 200 | 7.87 |
| A3W2-10 | 2 | 250 | 9.84 |
| A3W2-12 | 2 | 300 | 11.81 |
| A3W3-2 | 3 | 50 | 1.97 |
| A3W3-3 | 3 | 75 | 2.94 |
| A3W3-4 | 3 | 100 | 3.94 |
| A3W3-6 | 3 | 150 | 5.91 |
| A3W3-8 | 3 | 200 | 7.87 |

TORX POWER BITS



| Part No | Torx Size | L MM | L IN |
|-----------|-----------|------|------|
| A3T6-2 | T6 | 50 | 1.97 |
| A3T7-2 | T7 | 50 | 1.97 |
| A3T7-2.75 | T7 | 70 | 2.76 |
| A3T7-3.5 | T7 | 90 | 3.54 |
| A3T7-6 | T7 | 150 | 5.91 |
| A3T8-2 | T8 | 50 | 1.97 |
| A3T9-2.75 | T9 | 70 | 2.76 |

BIT HOLDERS



| Part No | L MM | L IN |
|---------------------------|------|------|
| 1/4" Hex, Magnetic | | |
| A3BHM-3 | 75 | 2.94 |
| A3BHM-4 | 100 | 3.94 |
| A3BHM-6 | 150 | 5.91 |
| A3BHM-8 | 200 | 7.87 |
| A3BHM-10 | 250 | 9.84 |

Bit and Nutsetter Part Number Nomenclature

Precedes Part Number

| | |
|--|---|
| BITS | A7 = 7/16 Power Drive |
| A3S = Phillips® Power Drive | AS = Electric Type Phillips® |
| A3W = Double Ended Phillips® | AM = Electric Type Slotted |
| A38S = Phillips® Insert | ATW = Electric Type Tri-Wing® |
| A39S = Phillips® Insert Reduced Nose | AT = Electric Hios Type Torx® |
| A3M = Slotted Power Drive | A26S = Electric Driver Phillips® |
| A38M = Slotted Insert | A26M = Electric Driver Slotted |
| A3MT = Slotted Power Drive Reduced Nose | A26C = Electric Driver Allen Socket Head |
| A3C = Allen Socket Head Power Drive | A3BHM = Insert Bit Holder (Magnetic Type) |
| A38C = Allen Socket Head Insert | A3BHD = Insert Bit Holder (Non Magnetic) |
| A3R = Square Recess Power Drive | |
| A3RT = Square Recess Turned Down (Power) | |
| A38R = Square Recess Insert | NUTSETTERS |
| A3T = Torx® Power Drive | A3B = Nutsetter |
| A38T = Torx® Insert | A3BMP = Magnetic (MP) Pressed Type |
| A3TS = Torq-Set® Power Drive | A3BMS = Magnetic (MS) Spring Loaded |
| A38TS = Torq-Set® Insert | A3BMT = Magnetic (MT) Tube Type |
| A3TA = Triangle Power Drive | A3BU = Universal Nutsetter |
| A3TW = Tri-Wing® Power Drive | |
| A38TW = Tri-Wing® Insert | MAG-0-NETS |
| | AM = AIMCO Mag-0-Net® |

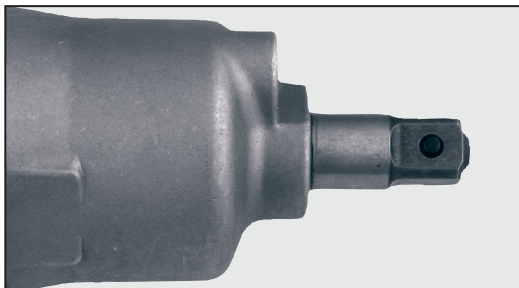
Contained within Part Number

| | |
|---|--|
| BITS | |
| PZ = Pozidriv® | |
| PZACR = Pozidriv® ACR® | |
| SDV = Supadriv® | |
| TR = Torx® Tamper Resistant | |
| ACRI = ACR® Installation | |
| ACR = ACR® Remove | |
| ACRB = ACR® 4x4 Both Install and Remove | |
| E4 = Electric 4 mm diameter | |
| E5 = Electric 5 mm diameter | |
| RS = Reduced Shank | |

Additional types and sizes of fastener tools, as well as custom parts, are available upon request. Contact an AIMCO Customer Service Associate at 1-503-254-6600, or toll free 1-800-852-1368.

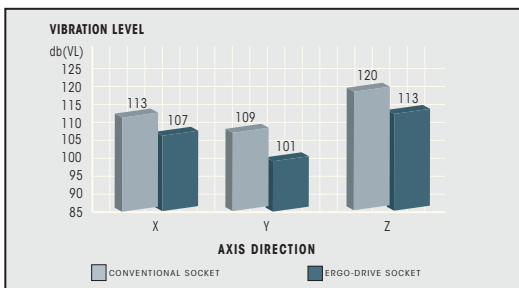
Ergo-Drive Series

ERGO-DRIVE® SOCKETS PROTECT...



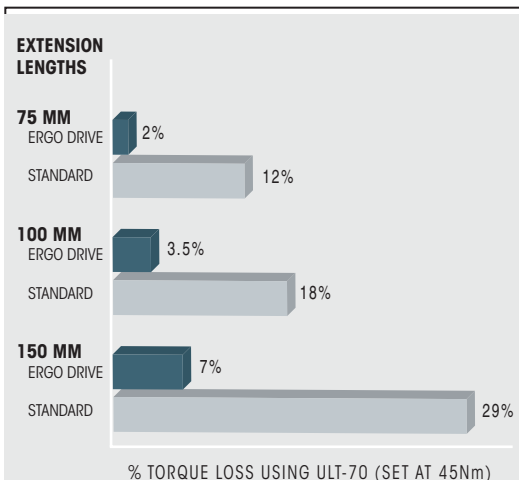
...YOUR INVESTMENT!

Pulse tools are an investment and the anvil is the most expensive single part of any pulse tool. ERGO-DRIVE sockets decrease vibration and wear on this critical component.



...YOUR ASSEMBLERS!

ERGO-DRIVE sockets cause significantly less vibration during fastening than conventional sockets. This allows your assemblers to do their jobs without the worry of vibration related injuries.

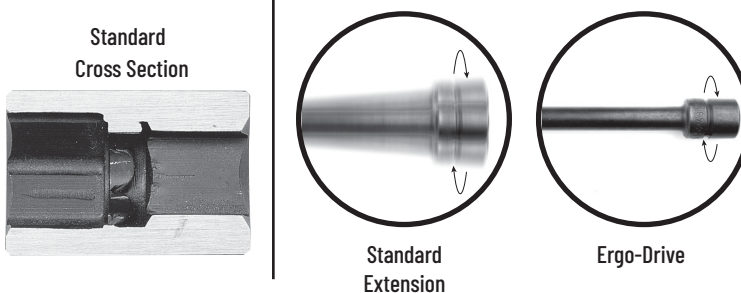
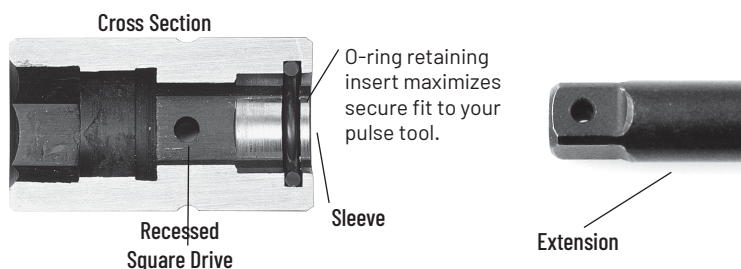


...YOUR PRODUCTS!

By reducing run-out and vibration, ERGO-DRIVE sockets allow the most repeatable, accurate rundowns to take place, ensuring excellent product quality.

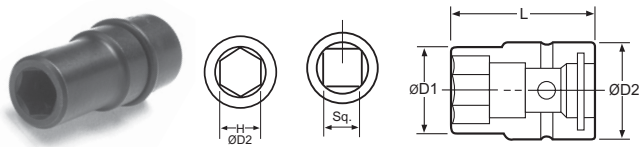


ERGO-DRIVE VS. STANDARD



Ergo-Drive Fastener Tools

ERGO-DRIVE SOCKETS



| Part No | Hex | D1 MM | D1 IN | D2 MM | D2 IN | L MM | L IN |
|---------|-----|----------|----------|----------|----------|---------|---------|
|---------|-----|----------|----------|----------|----------|---------|---------|

3/8" Square Drive

| | | | | | | | |
|----------|-------|----|------|----|------|----|------|
| A31/4EDS | 1/4" | 10 | 0.39 | 19 | 0.75 | 44 | 1.73 |
| A31/2EDS | 1/2" | 20 | 0.77 | 22 | 0.87 | 44 | 1.73 |
| A306EDS | 6 mm | 10 | 0.39 | 19 | 0.75 | 44 | 1.73 |
| A308EDS | 8 mm | 14 | 0.55 | 20 | 0.79 | 42 | 1.65 |
| A310EDS | 10 mm | 17 | 0.65 | 20 | 0.79 | 42 | 1.65 |
| A312EDS | 12 mm | 20 | 0.79 | 20 | 0.79 | 42 | 1.65 |
| A314EDS | 14 mm | 22 | 0.87 | 20 | 0.79 | 42 | 1.65 |
| A316EDS | 16 mm | 25 | 0.98 | 20 | 0.79 | 45 | 1.77 |
| A318EDS | 18 mm | 27 | 1.06 | 20 | 0.79 | 45 | 1.77 |

1/2" Square Drive

| | | | | | | | |
|----------|-------|----|------|----|------|----|------|
| A41/2EDS | 1/2" | 19 | 0.75 | 25 | 0.98 | 50 | 1.97 |
| A413EDS | 13 mm | 22 | 0.85 | 25 | 0.98 | 52 | 2.05 |
| A414EDS | 14 mm | 23 | 0.89 | 25 | 0.98 | 52 | 2.05 |
| A415EDS | 15 mm | 24 | 0.93 | 25 | 0.98 | 52 | 2.05 |
| A416EDS | 16 mm | 25 | 0.98 | 25 | 0.98 | 52 | 2.05 |
| A417EDS | 17 mm | 28 | 1.10 | 28 | 1.10 | 54 | 2.13 |
| A418EDS | 18 mm | 29 | 1.14 | 28 | 1.10 | 54 | 2.13 |
| A419EDS | 19 mm | 30 | 1.18 | 28 | 1.10 | 54 | 2.13 |

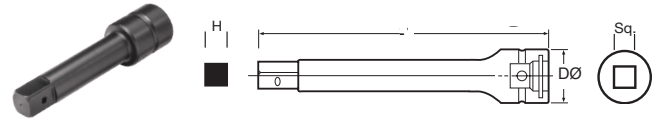
3/4" Square Drive

| | | | | | | | |
|------------|--------|----|------|----|------|----|------|
| A61-1/8EDS | 1-1/8" | 44 | 1.73 | 44 | 1.73 | 64 | 2.52 |
| A61-1/4EDS | 1-1/4" | 49 | 1.91 | 44 | 1.73 | 66 | 2.60 |
| A61-1/2EDS | 1-1/2" | 57 | 2.24 | 44 | 1.73 | 68 | 2.68 |
| A618EDS | 18 mm | 31 | 1.22 | 44 | 1.73 | 60 | 2.36 |
| A624EDS | 24 mm | 40 | 1.52 | 40 | 1.73 | 65 | 2.36 |

1" Square Drive

| | | | | | | | |
|------------|--------|-----|------|----|------|-----|------|
| A815/16EDS | 15/16" | 38 | 1.50 | 54 | 2.13 | 69 | 2.72 |
| A8100EDS | 100 mm | 136 | 5.35 | 76 | 2.99 | 120 | 4.72 |

ERGO-DRIVE EXTENSIONS



| Part No | Sq Drive | H | L MM | L IN | D MM | D IN |
|---------|-------------|---|---------|---------|---------|---------|
|---------|-------------|---|---------|---------|---------|---------|

3/8" Square Drive

| | | | | | | |
|----------|------|------|-----|-------|----|------|
| A352EDE | 3/8" | 3/8" | 52 | 2.05 | 20 | 0.79 |
| A3100EDE | 3/8" | 3/8" | 100 | 3.94 | 20 | 0.79 |
| A375EDE | 3/8" | 3/8" | 75 | 2.95 | 20 | 0.79 |
| A3150EDE | 3/8" | 3/8" | 150 | 5.91 | 20 | 0.79 |
| A3190EDE | 3/8" | 3/8" | 190 | 7.48 | 20 | 0.79 |
| A3254EDE | 3/8" | 3/8" | 254 | 10.00 | 20 | 0.79 |
| A3300EDE | 3/8" | 3/8" | 300 | 11.81 | 20 | 0.79 |
| A3320EDE | 3/8" | 3/8" | 320 | 12.60 | 20 | 0.79 |

1/2" Square Drive

| | | | | | | |
|----------|------|------|-----|-------|----|------|
| A464EDE | 1/2" | 1/2" | 64 | 2.52 | 28 | 1.10 |
| A476EDE | 1/2" | 1/2" | 76 | 2.99 | 28 | 1.10 |
| A4125EDE | 1/2" | 1/2" | 125 | 4.92 | 28 | 1.10 |
| A4204EDE | 1/2" | 1/2" | 204 | 8.03 | 28 | 1.10 |
| A4254EDE | 1/2" | 1/2" | 254 | 10.00 | 28 | 1.10 |
| A4355EDE | 1/2" | 1/2" | 355 | 13.98 | 28 | 1.10 |

3/4" Square Drive

| | | | | | | |
|----------|------|------|-----|------|----|------|
| A676EDE | 3/4" | 3/4" | 76 | 2.99 | 40 | 1.58 |
| A6100EDE | 3/4" | 3/4" | 100 | 3.94 | 40 | 1.58 |
| A6150EDE | 3/4" | 3/4" | 150 | 5.91 | 40 | 1.58 |
| A6200EDE | 3/4" | 3/4" | 200 | 7.87 | 40 | 1.58 |

1" Square Drive

| | | | | | | |
|----------|----|----|-----|------|----|------|
| A8150EDE | 1" | 1" | 150 | 5.91 | 54 | 2.13 |
| A8200EDE | 1" | 1" | 200 | 7.87 | 54 | 2.13 |

ERGO-DRIVE QUICK CHANGE CHUCKS



| Part No | Square Drive | Hex |
|---------|--------------|-----|
|---------|--------------|-----|

3/8" Square Drive

| | | |
|-----------------|------|-------|
| ADC-3SEDSQ | 3/8" | 1/4" |
| ADC-3SEDSQH7/16 | 3/8" | 7/16" |

1/2" Square Drive

| | | |
|-----------------|------|-------|
| ADC-4SEDSQ | 1/2" | 1/4" |
| ADC-4SEDSQH7/16 | 1/2" | 7/16" |

Additional types and sizes of fastener tools, as well as custom parts, are available upon request. Contact an AIMCO Customer Service Associate at 1-503-254-6600, or toll free 1-800-852-1368.

Custom Bits, Sockets, and Extensions

CUSTOM BITS, SOCKETS, AND EXTENSIONS FOR THE POWER TOOL USER

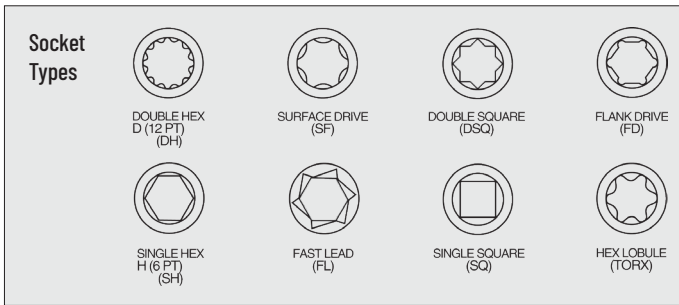
AIMCO can provide specials for virtually any application. From design to delivery, AIMCO's quick response ensures high quality, tight tolerance specials.

Specials are available in every style including:

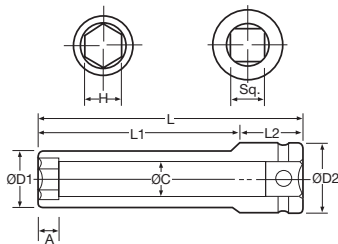
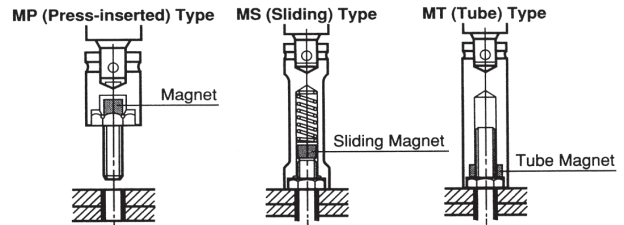
- Deep Socket
- Extended Socket
- Universal
- Allen Head
- Torx Head
- Socket Adapter
- Nut Runner Socket
- Nut Runner Joint
- Nutsetter
- Magnetic Nutsetter
- Universal Nutsetter
- Screwdriver Bits



Sample request forms are shown. Your detailed requirements will allow AIMCO to quickly respond with custom solutions for your fastening applications.



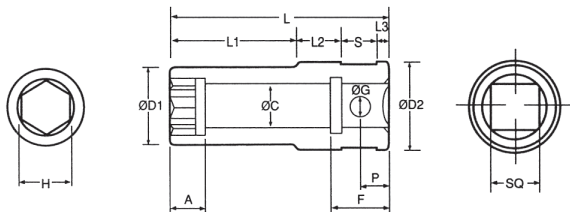
MAGNETIC STYLES:



| Magnet | | |
|--------|----|----|
| MP | MT | MS |
| | | |

SOCKET

| | H | L | L1 | L2 | A | ØC | ØD1 | ØD2 | Sq. |
|------|---|---|----|----|---|----|-----|-----|-----|
| SIZE | | | | | | | | | |
| TYPE | | | | | | | | | |



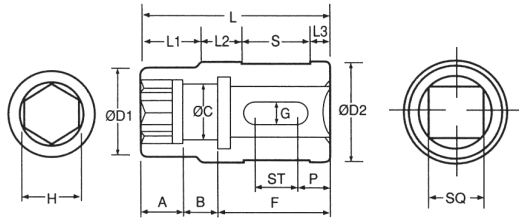
Nutrunner Socket Type A

| Magnet | | | H | L | L1 | L2 | L3 | S | ØD1 | A | ØC | ØG | P | F | ØD2 | Sq. | Qty. |
|--------|----|----|---|---|----|----|----|---|-----|---|----|----|---|---|-----|-----|------|
| MP | MT | MS | | | | | | | | | | | | | | | |
| | | | | | | | | | | | | | | | | | |

Min. Qty 10

✓ box for Ergo Drive

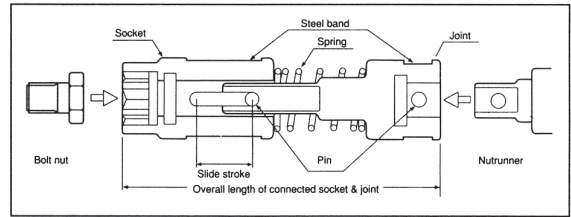
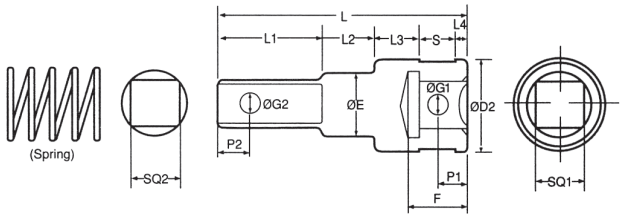
Special Parts



Nutrunner Socket Type B

Min. Qty 10

| | H | L | L1 | L2 | L3 | S | ØD1 | A | B | ØC | G | P | F | ST | ØD2 | Sq. | Qty. |
|------|---|---|----|----|----|---|-----|---|---|----|---|---|---|----|-----|-----|------|
| SIZE | | | | | | | | | | | | | | | | | |
| TYPE | | | | | | | | | | | | | | | | | |

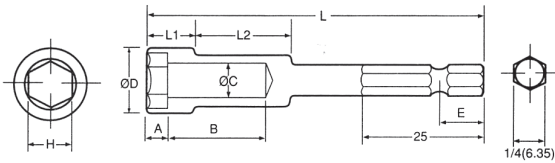


Nutrunner Joint Type B

Min. Qty 10

| | SQ2 | L | L1 | L2 | L3 | L4 | S | P1 | ØG2 | ØE | F | ØG1 | P2 | ØD2 | SQ1 | Qty. |
|------|-----|---|----|----|----|----|---|----|-----|----|---|-----|----|-----|-----|------|
| SIZE | | | | | | | | | | | | | | | | |
| TYPE | | | | | | | | | | | | | | | | |

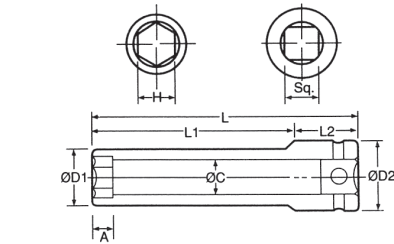
✓ box for Ergo Drive



Nutrunner Socket Type B

Min. Qty 10

| | H | ØD | L | E | L1 | L2 | A | B | ØC | Qty. |
|------|---|----|---|---|----|----|---|---|----|------|
| SIZE | | | | | | | | | | |
| TYPE | | | | | | | | | | |

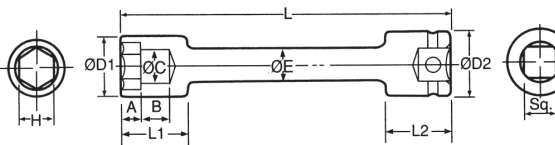


Socket

Min. Qty 10

| Magnet | | | H | L | L1 | L2 | A | ØC | ØD1 | ØD2 | Sq. | Qty. |
|--------|----|----|---|---|----|----|---|----|-----|-----|-----|------|
| MP | MT | MS | | | | | | | | | | |
| | | | | | | | | | | | | |

✓ box for Ergo Drive

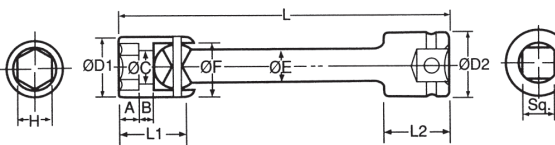


Extension Socket

Min. Qty 10

| Magnet | | | H | L | L1 | L2 | A | B | ØC | ØD2 | ØE | Sq. | Qty. |
|--------|----|----|---|---|----|----|---|---|----|-----|----|-----|------|
| MP | MT | MS | | | | | | | | | | | |
| | | | | | | | | | | | | | |

✓ box for Ergo Drive



Universal Socket

Min. Qty 10

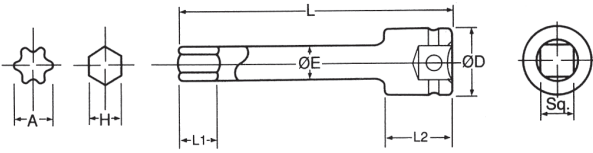
| Magnet | | | H | L | L1 | L2 | A | B | ØC | ØD1 | ØD2 | ØE | ØF | Sq. | Qty. |
|--------|----|----|---|---|----|----|---|---|----|-----|-----|----|----|-----|------|
| MP | MT | MS | | | | | | | | | | | | | |
| | | | | | | | | | | | | | | | |

✓ box for Ergo Drive

Special Parts

Allen Head / Torx Head

Min. Qty 10

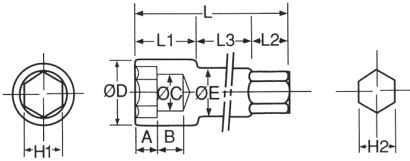


| Torx | H | L | L1 | L2 | ØD | ØE | ØF | Sq. | Qty. |
|------|---|---|----|----|----|----|----|-----|------|
| | | | | | | | | | |

✓ box for Ergo Drive

Socket Adapter

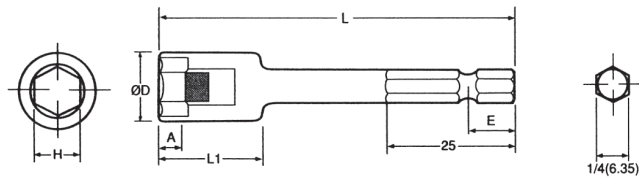
Min. Qty 10



| H1 | L | L1 | L2 | L3 | ØD | A | B | ØC | ØE | H2 | Qty. |
|------|---|----|----|----|----|---|---|----|----|----|------|
| SIZE | | | | | | | | | | | |
| TYPE | | | | | | | | | | | |

(MP) Magnetic Nut Setter

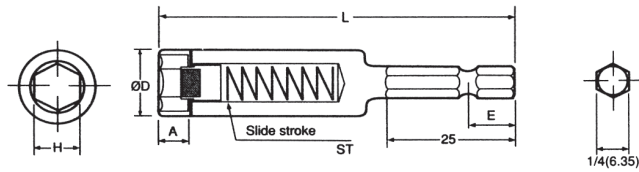
Min. Qty 10



| H | L | E | L1 | ØD | A | Qty. |
|------|---|---|----|----|---|------|
| SIZE | | | | | | |
| TYPE | | | | | | |

(MS) Magnetic Nut Setter

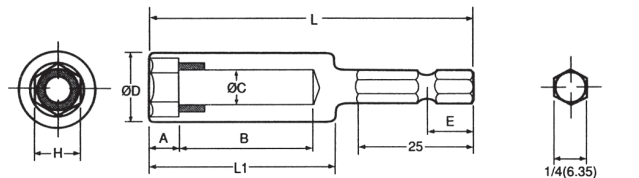
Min. Qty 10



| H | L | E | ØD | A | ST | Qty. |
|------|---|---|----|---|----|------|
| SIZE | | | | | | |
| TYPE | | | | | | |

(MT) Magnetic Nut Setter

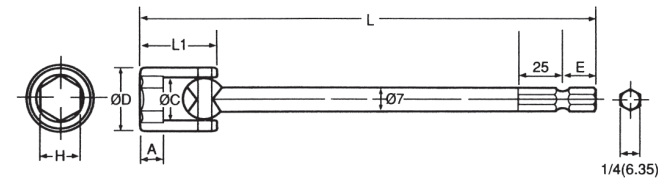
Min. Qty 10



| H | L | E | L1 | ØD | A | B | ØC | Qty. |
|------|---|---|----|----|---|---|----|------|
| SIZE | | | | | | | | |
| TYPE | | | | | | | | |

Universal Nut Setter

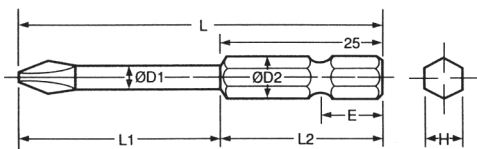
Min. Qty 10



| H | L | E | L1 | A | ØC | ØD | Qty. |
|---|---|---|----|---|----|----|------|
| | | | | | | | |

Screwdriver Bit

Min. Qty 500



| Point Size | L | L1 | L2 | ØD1 | ØD2 | E | H | Qty. |
|------------|---|----|----|-----|-----|---|---|------|
| | | | | | | | | |

CIRCLE ONE:



Phillips®



Slotted



Torx®



Torx®
Tamper Resistant



Pozidriv®



Supadriv®



Square Recess



Allen Head



Torq-Set®







Tri-Wing®

Conversion Charts

| Fraction • Decimal • Metric Conversions (to .32) | | | | | | | | | | | |
|--|---------|--------|-------|---------|---------|-------|---------|---------|-------|---------|---------|
| | DECIMAL | MM | | DECIMAL | MM | | DECIMAL | MM | | DECIMAL | MM |
| 1/32 | .03125 | .7938 | 9/32 | .28125 | 7.1438 | 17/32 | .53125 | 13.4938 | 25/32 | .78125 | 19.8438 |
| 1/16 | .0625 | 1.5875 | 5/16 | .3125 | 7.9375 | 9/16 | .5625 | 14.2875 | 13/16 | .8125 | 20.6375 |
| 3/32 | .09375 | 2.3812 | 11/32 | .34375 | 8.7312 | 19/32 | .59375 | 15.0812 | 27/32 | .84375 | 21.4312 |
| 1/8 | .125 | 3.175 | 3/8 | .375 | 9.525 | 5/8 | .625 | 15.875 | 7/8 | .875 | 22.225 |
| 5/32 | .15625 | 3.9688 | 13/32 | .40625 | 10.3188 | 21/32 | .65625 | 16.6688 | 29/32 | .90625 | 23.0188 |
| 3/16 | .1875 | 4.7625 | 7/16 | .4375 | 11.1125 | 11/16 | .6875 | 17.4625 | 15/16 | .9375 | 23.8125 |
| 7/32 | .21875 | 5.5562 | 15/32 | .46875 | 11.9062 | 23/32 | .71875 | 18.2562 | 31/32 | .96875 | 24.6062 |
| 1/4 | .25 | 6.35 | 1/2 | .5 | 12.7 | 3/4 | .75 | 19.05 | 1 | 1.0 | 25.4 |

Thread Size to Hex Size

|  | |  | |  | |  | |
|---|----------------------|---|----------------------|--|----------------------|---|----------------------|
| METRIC BOLT SIZE | SOCKET HEX SIZE (MM) | METRIC BOLT SIZE | SOCKET HEX SIZE (MM) | UNC BOLT SIZE | SOCKET HEX SIZE (IN) | SAE BOLT SIZE | SOCKET HEX SIZE (IN) |
| M 2 | 4 | M 27 | 41 | 1/4 | 7/16 | 1/4 | 7/16 |
| M 2.3 | 4.5 | M 30 | 46 | 5/16 | 1/2 | 5/16 | 1/2 |
| M 2.6 | 5 | M 33 | 50 | 3/8 | 9/16 | 3/8 | 9/16 |
| M 3 | 5.5 | M 36 | 55 | 7/16 | 11/16 | 7/16 | 5/8 |
| M 3.5 | 6 | M 39 | 60 | 1/2 | 3/4 | 1/2 | 3/4 |
| M 4 | 7 | M 42 | 65 | 9/16 | 7/8 | 9/16 | 7/8 |
| M 5 | 8 | M 45 | 70 | 5/8 | 15/16 | 5/8 | 15/16 |
| (M 5-6) | 9 | M 48 | 75 | 3/4 | 1-1/8 | 3/4 | 1-1/16 |
| M 6 | 10 | M 52 | 80 | 7/8 | 1-5/16 | 7/8 | 1-1/4 |
| M 7 | 11 | M 56 | 85 | 1 | 1-1/2 | 1-1/8 | 1-7/16 |
| M 8 | 13 | M 60 | 90 | 1-1/8 | 1-11/16 | 1-1/4 | 1-13/16 |
| (M 8) | 14 | M 64 | 95 | 1-1/4 | 1-7/8 | 1-3/8 | 2 |
| M 10 | 16 | M 68 | 100 | 1-3/8 | 2-1/16 | 1-1/2 | 2-3/16 |
| (M 10) | 17 | M 72 | 105 | 1-1/2 | 2-1/4 | | |
| M 12 | 18 | M 76 | 110 | 1-3/4 | 2-5/8 | | |
| (M 12) | 19 | M 80 | 115 | 2 | 3 | | |
| M 14 | 21 | M 85 | 120 | 2-1/4 | 3-3/8 | | |
| (M 14) | 22 | M 90 | 130 | 2-1/2 | 3-3/4 | | |
| M 16 | 24 | M 95 | 135 | | | | |
| M 18 | 27 | M 100 | 145 | | | | |
| M 20 | 30 | M 105 | 150 | | | | |
| (M 22) | 32 | M 110 | 155 | | | | |
| M 22 | 34 | M 115 | 165 | | | | |
| M 24 | 36 | M 120 | 170 | | | | |

Torque Conversion Factors

| UNITS TO BE CONVERTED | = | SAE | | | METRIC | | | INTERNATIONAL SYSTEM - S.I. | | |
|-----------------------|---|--------|--------|---------|--------|--------|---------|-----------------------------|-------|--------|
| | | OZF-IN | LBF-IN | LBF-FT | GF-CM | KGF-CM | KGF-M | MNM | CNM | NM |
| 1 ozf-in | = | 1 | 0.0625 | 0.005 | 72 | 0.072 | 0.0007 | 7.062 | 0.706 | 0.007 |
| 1 lbf-in | = | 16 | 1 | 0.083 | 1152.1 | 1.152 | 0.0115 | 113 | 11.3 | 0.113 |
| 1 lbf-ft | = | 192 | 12 | 1 | 13826 | 13.83 | 0.138 | 1356 | 135.6 | 1.356 |
| 1 gf-cm | = | 0.014 | 0.0009 | 0.00007 | 1 | 0.001 | 0.00001 | 0.098 | 0.01 | 0.0001 |
| 1 kgf-cm | = | 13.89 | 0.868 | 0.072 | 1000 | 1 | 0.01 | 98.07 | 9.807 | 0.098 |
| 1 kgf-m | = | 1389 | 86.8 | 7.233 | 100000 | 100 | 1 | 9807 | 980.7 | 9.807 |
| 1 mN-m | = | 0.142 | 0.009 | 0.0007 | 10.2 | 0.01 | 0.0001 | 1 | 0.1 | 0.001 |
| 1 cN-m | = | 1.42 | 0.088 | 0.007 | 102 | 0.102 | 0.001 | 10 | 1 | 0.01 |
| 1 N-m | = | 141.6 | 8.851 | 0.738 | 10197 | 10.20 | 0.102 | 1000 | 100 | 1 |



PRINTED IN THE U.S.A.

LIT-AT125, REV 12-03-24, ©2024 AIMCO

AIMCO CORPORATE HEADQUARTERS

10000 SE Pine Street
Portland, Oregon 97216
Phone: (503) 254-6600
Toll Free: 1-800-852-1368

AIMCO CORPORATION DE MEXICO SA DE CV

Ave. Cristobal Colon 14529
Chihuahua, Chihuahua. 31125
Phone: (01-614) 380-1010
Fax: (01-614) 380-1019