

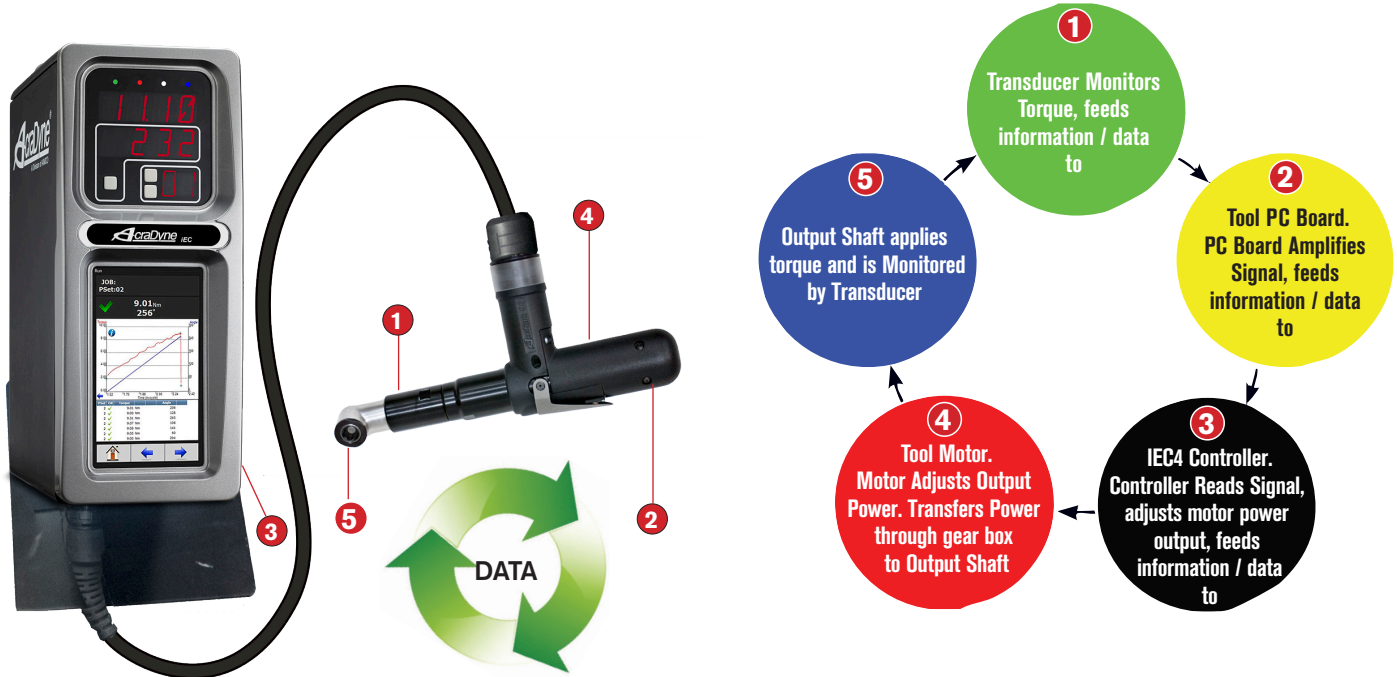
# AcraDyne®

INNOVATIVE SOLUTIONS FOR  
DOOR ON / DOOR OFF APPLICATIONS



# INLINE HANDLE TOOL WITH MID-EXIT CABLE

THE INNOVATIVE SOLUTION PERFECTLY SUITED FOR DOOR ON / DOOR OFF APPLICATIONS



## A TRANSDUCERIZED CLOSED LOOP SYSTEM MEANS:

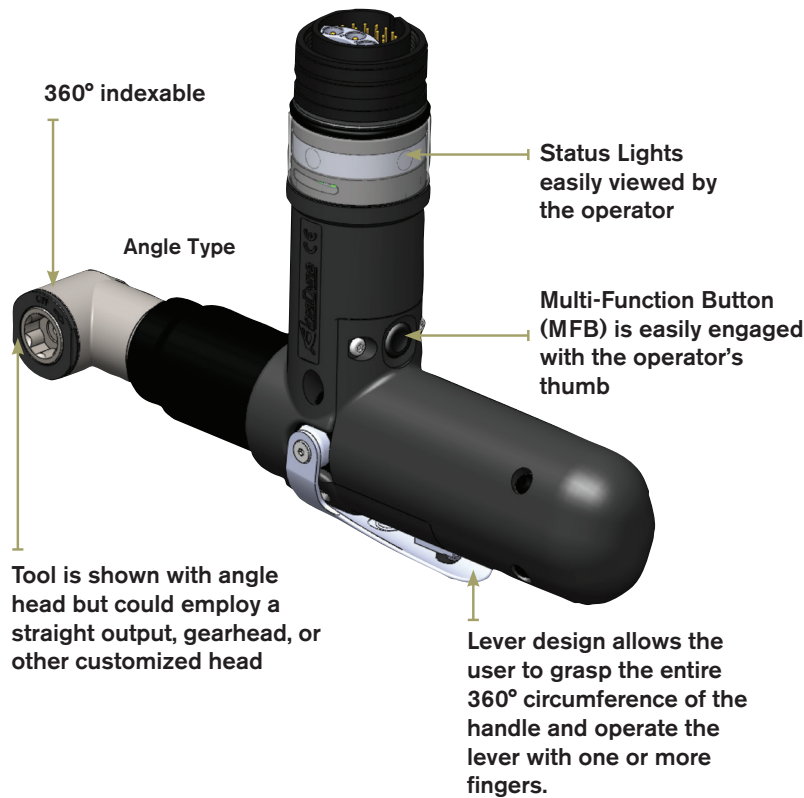
- Don't settle for guesswork! The built-in transducer ensures torque values are accurate.
- Torque measurement is not affected by changes in gear efficiency, normal tool wear between calibrations, temperature, voltage, or motor performance.
- On-tool LEDs for Accept/Reject signals.
- The system can easily be verified and calibrated anywhere.
- Interchangeable tools, cables, and controllers – calibrations are specific to the tool not the system as a whole.



## TOOL INNOVATIONS

- **Length**
  - Reduced tool length due to cable exiting in front of grip surface.
- **Ergonomics**
  - Reduced torque reaction compared to pistol-style tools
  - The inline handle, coupled with the ergonomic hand positioning, allows for increased leverage and decreased strain on the wrist
- **Cable management**
  - If used with a spring balancer, the tool hangs naturally near its center of gravity, the cable is controlled by the balancer
  - Front positioning of cable provides for easy cable management. This is especially beneficial when one plane has length constraints and at 90° is free from obstruction (vertical for doors-on applications)

# INLINE HANDLE TOOL WITH MID-EXIT CABLE

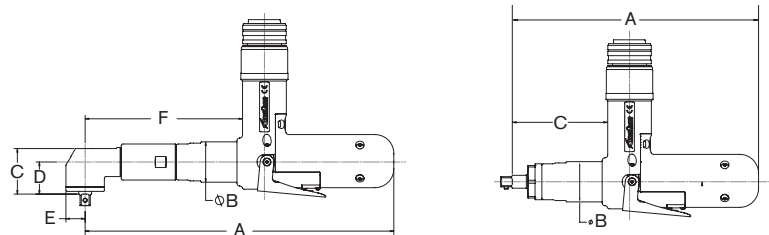


## APPLICATION DATA

Specialized heads and blades available by request.  
Contact AIMCO at 1-503-254-6600, or toll free 1-800-852-1368.

MODEL*	NM	MAX TORQUE FT-LB	NM	TORQUE RANGE FT-LB	FREE SPEED RPM	LB	WEIGHT (-) SOCKET	KG	OUTPUT DRIVE
AEN4C22015BM(F)	15	11	3.75 - 15	2.77 - 11	700	2.6	1.18	3/8 sq. dr.	
AEN4F22030BM(F)	30	22	7.5 - 30	5.53 - 22	675	3.3	1.50	3/8 sq. dr.	
AEN4F22037BM(F)	37	29	9.25 - 37	6.82 - 29	533	3.3	1.50	3/8 sq. dr.	
AEN4F22044BM(F)	44	32	11 - 40	8.11 - 29	432	3.3	1.50	3/8 sq. dr.	
AES4A22020BVM	20	15	5 - 20	3.7 - 15	1050	2.4	1.09	3/8 sq. dr.	
AES4A22025BVM	25	18	6.3 - 25	4.6 - 18	830	2.4	1.09	3/8 sq. dr.	
AES4A22030BVM	30	22	7.5 - 30	5.5 - 22	672	2.4	1.09	3/8 sq. dr.	
AES4A22040BVM	40	30	10 - 40	7.4 - 30	525	2.4	1.09	3/8 sq. dr.	

\* Add "F" to part numbers for flush socket.



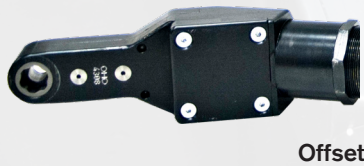
## DIMENSIONS

MODEL	IN	(A) MM	IN	(B) MM	IN	(C) MM	IN	(D) MM	IN	(E) MM	IN	(F) MM
AEN4C22015BM	9.02	229.1	1.47	37.3	1.29	32.8	.82	20.9	.52	13.1	5.53	140.4
AEN4F22030BM	11.24	285.6	1.47	37.3	1.66	42.1	1.17	29.7	.70	17.8	5.73	145.6
AEN4F22037BM	11.24	285.6	1.47	37.3	1.66	42.1	1.17	29.7	.70	17.8	5.73	145.6
AEN4F22044BM	11.24	285.6	1.47	37.3	1.66	42.1	1.17	29.7	.70	17.8	5.73	145.6
AES4A22020BVM	9.0	228.1	1.47	37.3	3.49	88.6	-	-	-	-	-	-
AES4A22025BVM	9.0	228.1	1.47	37.3	3.49	88.6	-	-	-	-	-	-
AES4A22030BVM	9.0	228.1	1.47	37.3	3.49	88.6	-	-	-	-	-	-
AES4A22040BVM	9.0	228.1	1.47	37.3	3.49	88.6	-	-	-	-	-	-

# SPECIALIZED HEADS AND BLADES

## SPECIALIZED HEADS AND BLADES

Whether working with AcraDyne or Uryu tools, AIMCO is able to provide specialized heads and blades for almost any application. Tubenut, Hold and Drive, Crow Foot, Offsets and Sliding Spindles are just a few of the head styles available. Let us know your requirements and we will help you select the head configuration to get the job done. Contact an AIMCO Customer Service Associate for details, 1-503-254-6600, or toll free 1-800-852-1368.



**AcraDyne**<sup>®</sup>



# PNEUMATIC AND GEARED TOOLS

## Pulse Tools with Specialized Heads

### FEATURES

- **Speed**  
Pulse tools feature quick, free speeds for best productivity
- **Ergonomics**  
Pulse technology means virtually no torque reaction
- **Durability**  
Precision tolerances in gearing for reliability on difficult jobs
- **Access**  
Small head designs allow access into tight spaces



UL-60 with custom gearheads



UL-60S with offset blade

UL-60S with straight blade

UL-70S with offset blade

Recommended Air Pressure: 85 psi

MODEL	FREE SPEED		TORQUE RANGE		WEIGHT		OVERALL LENGTH		DRIVE IN	NOISE LEVEL dB(A)	AIR USAGE CFM
	RPM		NM	FT-LB	LB	KG	IN	MM			
PISTOL											
UL-60	7,000		32 - 50	23.7 - 37.0	1.8	0.8	5.5	140	3/8 sq.	80	14.0
UL-70	5,700		40 - 65	29.6 - 48.1	2.1	1.0	6.0	153	3/8 sq.	80	15.8
STRAIGHT											
UL-60S	6,700		32 - 50	23.7 - 37.0	1.7	0.8	8.2	209	3/8 sq.	80	15.8
UL-70S	5,400		36 - 60	26.6 - 44.4	1.9	0.9	8.8	223	3/8 sq.	84	14.0

Air Hose Size: 3/8" I.D.

Air Inlet: N.P.T. 1/4

NOTE: Torque ranges reflect residual B joint torque values

## UGW SERIES GEARED WRENCHES



UGW-8N

Recommended Air Pressure: 85 psi

MODEL	MAX TORQUE		FREE SPEED RPM	OVERALL LENGTH		WEIGHT		MIN/MAX HEX SOCKET SIZE		NOISE LEVEL dB(A)	AIR USAGE CFM
	NM	FT-LB		MM	IN	LB	KG	MM	IN		
GEARED WRENCHES											
UGW-6N	18	13.3	530	310	12.2	3.1	1.4	9 - 12	3/8 - 7/16	76	10.5
UGW-8N	23	17.0	410	322	12.7	3.2	1.5	10 - 17	7/16 - 5/8	76	10.5

Air Hose Size: 3/8 I.D.

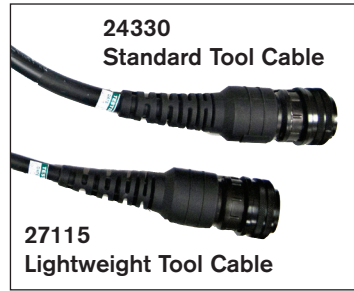
Air Inlet: N.P.T. 1/4

# ACCESSORIES

## CABLE ASSEMBLIES

The AcraDyne DC electric nutrunner tool system uses a single cable to carry all necessary conductors for superior ergonomics and durability.

- Flexible polyurethane cover for maximum durability, abrasion and transmission fluid resistant
- Quick disconnects at both ends facilitate tool changeover and troubleshooting
- The CAN data/signal is via RJ45 for products such as the KDM, socket tray or computer



## BREAKAWAY CABLE CONNECTOR

Ensures disconnect of cable should stress in excess of 40 lbs occur.



## BODY COVERS

Door jobs can be unique. AIMCO is pleased to quote protective covers for specific heads and blades upon request.



MODEL	DESCRIPTION	LENGTH	
		M	FT
TOOL CABLES			
24330	Cable G3 Tool Cable 3M	3	9.8
25350	Cable G3 Tool Cable 5M	5	16.4
24320	Cable G3 Tool Cable 10M	10	32.8
27110	Cable G3 Tool Cable 3M Lightweight*	3	9.8
27115	Cable G3 Tool Cable 5M Lightweight*	5	16.4
27122	Cable G3 Tool Cable 10M Lightweight*	10	32.8
EXTENSIONS			
24320	Extension cable 10M	10	32.8
25518	Extension cable 20M	20	65.6

\*Lightweight cables are for use only with 1000 & 2000 Series tools.



# CUSTOM BITS, SOCKETS, AND EXTENSIONS

## CUSTOM BITS, SOCKETS, AND EXTENSIONS FOR THE POWER TOOL USER

In addition to an extensive line of standard bits, sockets, and extensions, AIMCO can provide specials for virtually any application. From design to delivery, AIMCO's quick response ensures high quality, tight tolerance specials. Contact an AIMCO Customer Service Associate for details, 1-503-254-6600, or toll free 1-800-852-1368.

### Specials are available in every style including:

- Deep Socket
- Extended Socket
- Universal
- Allen Head
- Torx Head
- Socket Adapter
- Nut Runner Socket
- Nut Runner Joint
- Nutsetter
- Magnetic Nutsetter
- Universal Nutsetter
- Screwdriver Bits



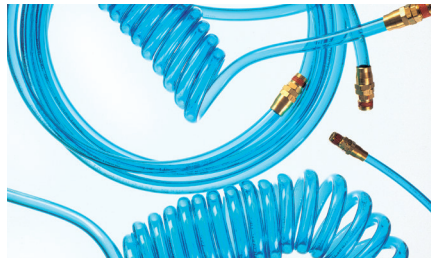
## ANTI-MAR SOCKETS

AIMCO's line of Anti-Mar sockets are designed for worker safety and workpiece protection. The sockets are covered with a protective resin material that spins freely, which prevents marring of the workpiece, and protects users against safety hazards common with rotating tools. The cover provides an anti-vibrational connection between the extension bar and the socket, which is ergonomic for the user and minimizes torque loss.

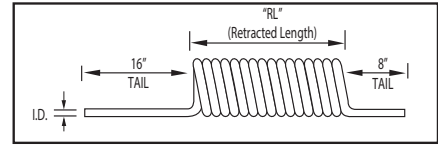


# AIR LINE

## Polyurethane Hose



- Durable Polyurethane is chemical resistant and lightweight, and provides excellent recoil memory and maximum flexibility
- Available in transparent hose color (opaque also available)
- Assemblies for coiled hose include reusable swivel fitting. Straight hose available with or without fittings
- Working temperature: -104° F to 175° F



### SINGLE AIR HOSE ASSEMBLIES (COILED)

MODEL	DESCRIPTION (O.D. x I.D. x LENGTH)	RETRACTED LENGTH	WORKING PRESSURE	NPT FITTINGS
ASH-250C-10MSZ	3/8" x 1/4" x 10'	7"	100 psi	1/4"
ASH-250C-15MSZ	3/8" x 1/4" x 15'	9-1/2"	100 psi	1/4"
ASH-250C-25MSZ	3/8" x 1/4" x 25'	15-1/2"	100 psi	1/4"
ASH-375C-15MSZ	9/16" x 3/8" x 15'	10"	100 psi	3/8"
ASH-375C-25MSZ	9/16" x 3/8" x 25'	14"	100 psi	3/8"

Custom length coil assemblies and special colors available in minimum order quantities. Contact an AIMCO Customer Service Associate, 1-503-254-6600, or toll free 1-800-852-1368.



### STRAIGHT AIR HOSE (SOLD PER FOOT)

MODEL	DESCRIPTION
ASH-375Z	3/8" I.D.
ASH-500Z	1/2" I.D.

Contact an AIMCO Customer Service Associate about full reel pricing, 1-503-254-6600, or toll free 1-800-852-1368.

## Rubber Hose



28796  
1/2" ID

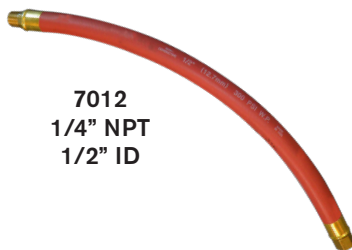
- Designed for use in a wide range of industrial, construction, and agricultural applications
- Constructed of high grade, reinforced EPDM synthetic rubber
- Working temperature: -40° F to 190° F

### SINGLE AIR HOSE (RUBBER)

I.D.	O.D.	LENGTH	WORKING PRESSURE	WEIGHT
3/16"	0.44"	10 ft	200 psi	0.8 lb
1/4"	0.5"	10 ft	200 psi	0.9 lb
5/16"	0.58"	10 ft	200 psi	1.2 lb
3/8"	0.67"	10 ft	200 psi	1.5 lb
1/2"	0.81"	10 ft	200 psi	2.0 lb
5/8"	0.97"	10 ft	200 psi	2.7 lb
3/4"	1.12"	10 ft	200 psi	3.4 lb

Custom lengths available. Contact an AIMCO Customer Service Associate for more details, 1-503-254-6600, or toll free 1-800-852-1368.

## Whip Hose



7012  
1/4" NPT  
1/2" ID

- Reinforced general purpose synthetic rubber hose provides medium oil resistance
- Available in custom lengths and in various colors
- Working temperature: -20° F to 190° F

### WHIP HOSE (RUBBER)

I.D.	NOM O.D.	MAX PSI	WEIGHT
1/4"	0.54"	300 psi	0.14 lb/ft
5/16"	0.64"	300 psi	0.18 lb/ft
3/8"	0.69"	300 psi	0.19 lb/ft
1/2"	0.86"	300 psi	0.26 lb/ft

Custom lengths available. Contact an AIMCO Customer Service Associate for more details, 1-503-254-6600, or toll free 1-800-852-1368.



# AIR LINE ACCESSORIES

## BRASS QUICK COUPLERS

Manual ball couplers designed for use with ergonomic twist plugs. Brass with nitrile seals, rated to 300 PSI, from -40° to +250° F.

MODEL	DESCRIPTION
B23	1/4" NPT F x 1/4" QC Brass Coupler
B23E	1/4" NPT F x 3/8" QC Brass Coupler
B25	3/8" NPT F x 3/8" QC Brass Coupler



## SWIVEL AIR FITTINGS

For use with most portable air tools, including grinders, drills, screwdrivers, buffers, sanders, staple guns, and more. Rotates 360° for awkward angles.



MODEL	INLET	WEIGHT	MAX PSI	TOOL CFM
7021	1/4" NPT	3 oz	Up to 125	25
7041A	3/8" NPT	11 oz	Up to 125	50
7051	1/2" NPT	7 oz	Up to 125	60

## IN-LINE MINI REGULATORS

Easily adjust airflow with the turn of a dial.

MODEL	CAPACITY
932-100-0	1/8" NPT
932-110-0A	1/4" NPT



## AIR LINE FITTINGS

MODEL	CAPACITY
250-RZ	1/4" NPT Rigid Fitting
250-SZ	1/4" NPT Swivel Fitting
375-RZ	3/8" NPT Rigid Fitting
375-SZ	3/8" NPT Swivel Fitting
500-SZ	1/2" NPT Swivel Fitting



## MINI AIR GAUGE SWIVEL JOINT KITS

- Bi-directional 360° rotation
- Keeps air hose straight and untwisted
- Decreases operator fatigue

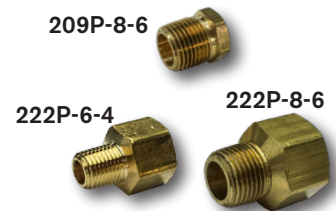


MODEL	INLET	WEIGHT	MAX PSI	TOOL CFM
7021AG	1/4" NPT	3 oz	Up to 125	25
7041AG	3/8" NPT	3 oz	Up to 125	50



## BRASS ADAPTERS AND BUSHINGS

Pipe fittings for use as medium and low pressure connectors. Meets functional requirements of SAE J530, SAE J531, ASME and ASA. Rated 1,000 PSI from -65° to +250° F.

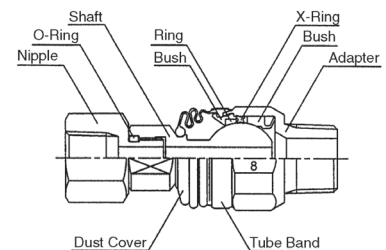
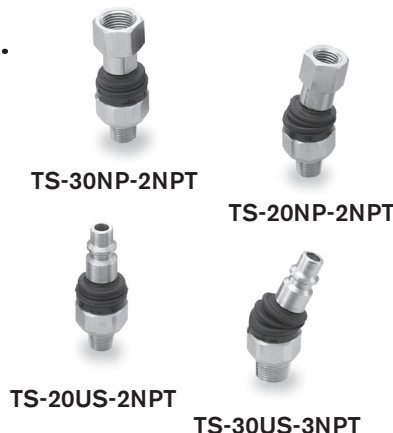


MODEL	DESCRIPTION
222P-6-4	3/8" NPT F x 1/4" NPT M Adapter
222P-8-6	1/2" NPT F x 3/8" NPT M Adapter
222P-12-8	3/4" NPT F x 1/2" NPT M Adapter
209P-6-4	1/4" NPT F x 3/8" NPT M Bushing
209P-8-6	3/8" NPT F x 1/2" NPT M Bushing

## ERGONOMIC TWIST PLUGS

These unique, ergonomically designed hose fittings provide 360° rotation and 35° angled rotation in any direction.

- Two rotation points prevent kinking of air hose
- Design ensures full air pressure flow
- Rotating joint comes with polyurethane dust cover
- Heavy duty construction



MODEL	DESCRIPTION
TS-30NP-2NPT	3/8" NPT Female x 1/4" NPT Male
TS-20NP-2NPT	1/4" NPT Female x 1/4" NPT Male
TS-20US-2NPT	1/4" US Plug x 1/4" NPT Male
TS-30US-3NPT	3/8" US Plug x 3/8" NPT Male

# NOTES

Lined area for notes, consisting of multiple horizontal lines.





#### CORPORATE HEADQUARTERS

10000 SE Pine St.  
Portland, Oregon 97216  
Phone: (503) 254-6600  
Toll Free: 800-852-1368

#### AIMCO CORPORATION

DE MEXICO SA DE CV  
Ave. Cristobal Colon 14529  
Chihuahua, Chihuahua. 31125  
Mexico  
Toll Free : (01-800) 801-1600  
Direct : (01-614) 380-1010  
Fax: (01-614) 380-1019

#### AIMCO EUROPE

C/ Rio Gallo, 431 urb. Montelar  
19174 Galápagos / Guadalajara  
Spain  
Phone: +34 673 34 99 25

#### AIMCO SOUTH AMERICA

Carrera 29A, #7B-91. Origami Building. Int604  
Medellin; Colombia 050021  
Phone: +57 300-2926550

#### AIMCO CHINA

Room 607, No. 3998 Hongxin Rd,  
Dibao Plaza, Minhang District,  
Shanghai, 201103  
China  
Phone: 0086-21-34319246  
Fax: 0086-21-34319245

#### AIMCO SOUTH KOREA

B-1213, 167, Songpa-Daero  
Songpa-Gu, Seoul 05800  
South Korea  
Phone: 0082-2-2054-8930  
Cell: 0082-10-9804-8905