




HIGH CAPABILITY BOLTING TOOLS



THE DRIVING FORCE IN CRITICAL BOLTING



Since 1970, **AIMCO** has been providing Global Assembly and Critical Bolting Tooling solutions for the Automotive, Electronics, Aerospace, Energy Services, and General Assembly Industries.

Headquartered in Portland, Oregon, **AIMCO** has become a leading importer and exporter of industrial power tools. **AIMCO** currently exports to over 33 countries including Mexico, Brazil, Germany, France, Korea, China, the UK, India, Denmark, and most recently in Russia.

In 1999, AIMCO began manufacturing its **AcraDyne®** line, which produces a complete line of D/C Controlled Tools and custom built multiple spindle systems. Our service, repair, and calibration labs provide fast turnaround on repairs; additionally, all electronic torque equipment meets NIST standards.

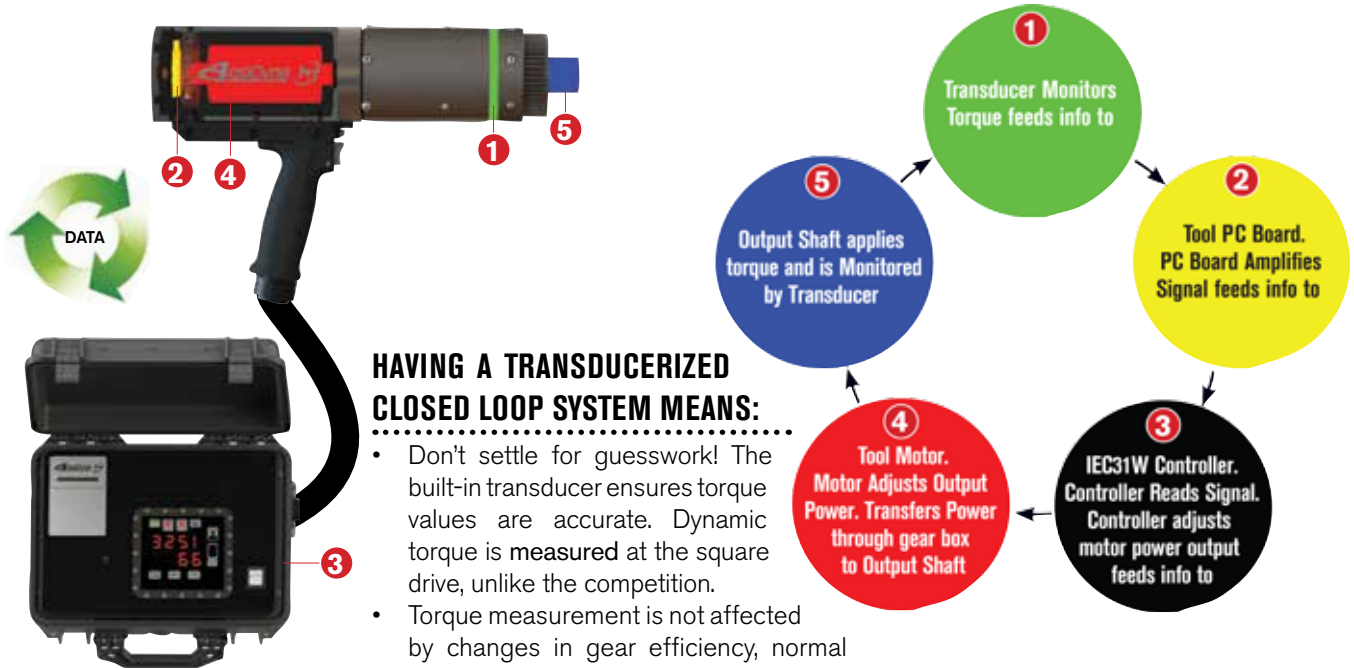
If **Productivity, Ergonomics, Reliability, and Quality** are driving forces in your business, then let **AcraDyne®** be your value-added partner. **AcraDyne®** provides cost effective solutions for our customers by resolving challenges related to tightening and critical bolting strategies, tool selection and installation, joint failure analysis, audit trails, and methods. This, combined with operator training, maximizes the production efficiencies our tools provide.

AcraDyne® produces a complete line of D/C Controlled Tools as well as custom built multiple spindle systems ranging from approximately .5 to 8,100 Nm. **All Made in the USA.**

Our strategically located sales force, coupled with our worldwide distribution, make **AcraDyne®** the right choice for you.



The Driving Force in Critical Bolting



HAVING A TRANSDUCERIZED CLOSED LOOP SYSTEM MEANS:

- Don't settle for guesswork! The built-in transducer ensures torque values are accurate. Dynamic torque is measured at the square drive, unlike the competition.
- Torque measurement is not affected by changes in gear efficiency, normal tool wear between calibrations, temperature, voltage, or motor performance.
- On-tool LEDs for Accept/Reject signals.
- The system can easily be verified and calibrated anywhere.
- Interchangeable tools, cables, and controllers – calibrations are specific to the tool not the system as a whole.

CHOOSE YOUR HANDLE



FEATURES AND BENEFITS

Critical high torque assembly and bolting applications demand tools that will deliver torque with superior performance and durability. The precision design of the HT Series from AcraDyne combines these features in an electric tool that beats the competition on productivity and ergonomics. AcraDyne's transducer torque control system provides consistent, reliable torque values as well as the ability to monitor rotational angle during the tightening process. When combined with AcraDyne's Controllers, customers have a high torque critical bolting system that can handle the toughest and most important bolting jobs. The faster speed, coupled with its extreme accuracy, makes this bolting system an outstanding cost effective investment.

- Transducerized closed-loop control, NOT current control like most High Torque products available.
- One of the only high torque tools in the world with the transducer at the output.
- Torque is measured at the output, not before the gearing like competing products.
- No effect on results caused by gear wear like all other tools available.
- The torque reported is the torque delivered to the fastener.
- Most accurate high torque tools in the world.
- Up to three times faster than the competition.
- Interchangeable Tools, Cables, and Controllers – Calibrations are specific to the tool not the system as a whole.
- Universal Controller for all AcraDyne[®] tools.
- On-tool LEDs for Accept / Reject signals.
- Designed and **MADE IN THE USA.**



PISTOL TYPE
(AEP)



REAR MOUNTED PISTOL
(AED)



AXIAL TYPE
(AEJ)



FIXTURED TYPE
(AEF)



STRAIGHT LEVER TYPE
(AES)



MODEL* (handle type)	SERIES	APPROX. TORQUE		APPROX. SPEED rpm	WEIGHT		LENGTH		DIA.		DRIVE in	SOUND LEVEL dB(A)
		Nm	ft-lb		kg	lb	mm	in	mm	in		
()4(A)(B)66500B	6000	500	370	106	5.5	12	305	12	66	2.6	0.75	66
()4(A)(B)66750B	6000	750	550	72	5.5	12	305	12	66	2.6	0.75	66
()4(A)(B)771000B	7000	1,000	750	65	7.3	16	310	12.2	76	3.0	1	66
()4(A)(B)772500B	7000	2,500	1,850	25	8.2	18	345	13.6	76	3.0	1	66
()4(A)(B)884200B1	8000	4,200	3,100	12	11.8	26	391	15.4	86	3.6	1	66
()4(A)(B)884200B	8000	4,200	3,100	12	11.8	26	391	15.4	86	3.6	1.5	66
()4(A)(B)885000B	8000	5,000	3,700	9	11.8	26	391	15.4	86	3.6	1.5	66
()4(A)(B)896500B	8000/9000	6,500	4,800	7	16.4	36	429	16.9	101	4.0	1.5	66
()4(A)(B)898100B	8000/9000	8,100	6,000	5	16.4	36	429	16.9	101	4.0	1.5	66

* The fifth digit of the model number is "A" for fixed gearcase models and "B" for clutched gearcase models. Add "B" to the end of the model number for bottom exit cable (fixture type). Above data is for clutched gearcase models. For no-clutched models, reduce weight by 1.5 lb (0.7 kg) and length by 2 in (51 mm).

Providing Unmatched Accuracy

FEATURES AND BENEFITS

- Transducerized closed-loop control like all AcraDyne HT-Series tools.
- Torque is measured at the output, not before the gearing like competing products.
- A unique solution: Low profile head, small diameter, lever operated tools with the transducer at the output.
- No effect on results caused by gear wear, like other angle tools. The torque reported is the torque delivered to the fastener.
- Most accurate right-angle high torque tools in the world.
- Smallest tools of their kind on the market.
- Same durable high-cycle gearing as our other HT-series tools.
- Models up to 8100 Nm available by special order.



AEN3571000A



AEN356540A



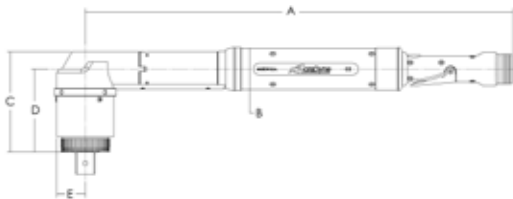
AEN3571600A



AEN3572600A

SPECIFICATIONS

APPLICATION DATA	MAX. TORQUE*		TORQUE RANGE		FREE SPEED RPM	WEIGHT		OUTPUT DRIVE
	nm	ft.-lbs.	nm	ft.-lbs.		lbs.	kg	
AEN356540A	540	398	135-540	100-398	109	13.1	5.95	3/4" Square Drive
AEN3571000A	1000	737	250-1000	184-737	61	16.3	7.39	1" Square Drive
AEN3571600A	1600	1180	400-1600	295-1180	33	16.7	7.57	1" Square Drive
AEN3572600A	2600	1917	650-2600	479-1917	21	18.5	8.40	1" Square Drive



DIMENSIONS	A		B		C		D		E	
	in	mm	in	mm	in	mm	in	mm	in	mm
AEN356540A	22.58	573.6	2.31	58.7	4.75	120.6	4.05	102.8	1.33	33.7
AEN3571000A	22.92	582.2	2.31	58.7	5.36	136.1	4.44	112.7	1.53	38.7
AEN3571600A	22.92	582.2	2.31	58.7	5.36	136.1	4.44	112.7	1.53	38.7
AEN3572600A	22.92	582.2	2.31	58.7	6.77	171.9	5.86	148.8	1.53	38.7

DUAL LEVER TOOLS

FEATURES AND BENEFITS

- Additional safety when using a tool with a reaction bar or nose extension.
- Requires the operator to use both hands when starting the tool, which keeps their hands clear of the application.
- Helps avoid accidental starting of the tool.
- Available in two handle types: "Handle Bar" style (F) and Straight (S) tool with side handle.



MODEL* (handle type)	SERIES	APPROX. TORQUE		APPROX. SPEED rpm	WEIGHT		LENGTH		DIA.		DRIVE in	SOUND LEVEL dB(A)
		Nm	ft-lb		kg	lb	mm	in	mm	in		
AE(S)(F)4(A)(B)66500BDL	6000	500	370	106	5.5	12	305	12	66	2.6	0.75	66
AE(S)(F)4(A)(B)66750BDL	6000	750	550	72	5.5	12	305	12	66	2.6	0.75	66
AE(S)(F)4(A)(B)77100BDL	7000	1,000	750	65	7.3	16	310	12.2	76	3.0	1	66
AE(S)(F)4(A)(B)77250BDL	7000	2,500	1,850	25	8.2	18	345	13.6	76	3.0	1	66
AE(S)(F)4(A)(B)884200B1DL	8000	4,200	3,100	12	11.8	26	391	15.4	86	3.6	1	66
AE(S)(F)4(A)(B)884200BDL	8000	4,200	3,100	12	11.8	26	391	15.4	86	3.6	1.5	66
AE(S)(F)4(A)(B)885000BDL	8000	5,000	3,700	9	11.8	26	391	15.4	86	3.6	1.5	66
AE(S)(F)4(A)(B)896500BDL	8000/9000	6,500	4,800	7	16.4	36	429	16.9	101	4.0	1.5	66
AE(S)(F)4(A)(B)898100BDL	8000/9000	8,100	6,000	5	16.4	36	429	16.9	101	4.0	1.5	66

* The fifth digit of the model number is "A" for fixed gearcase models and "B" for clutched gearcase models.

Above data is for clutched gearcase models. For no-clutched models, reduce weight by 1.5 lb (0.7 kg) and length by 2 in (51 mm).

HT GEARHEAD TOOLS

FEATURES AND BENEFITS

- Custom made to fit virtually any application.
- Same high durability gearing as on AcraDyne's standard HT Series tools.
- Model types available:
 - HT Right Angle tools
 - HT Offset Gearhead tools
 - HT Right Angle with Offset Head
- Torque ranges from 400Nm to 4650Nm.



NOSE EXTENSIONS

FEATURES AND BENEFITS

- Ideal for hard-to-reach applications when a torque tube, or arm, is not desirable.
- Used as a cost-effective, more flexible option to a multiple spindle system.
- Common Applications:
 - Wheel install and repair stations.
 - Large flange assembly



ACRADYNE® HT SERIES – CONTROLLER

AcraDyne's iEC controller is reliable, easy to operate, and is self-contained in its own weatherproof, rugged case to protect it from the toughest of environments.

FEATURES AND BENEFITS

- Data Storage – Up to 2,040 rundowns stored on board.
- Firmware – Custom-designed operating system means no licensing fees.
- Parameter Set Select and Indication – Change between 32 jobs with one touch.
- Tool Calibration Routines – Stores the calibration directly in the tool's memory for easy plug and play into any HT Series Controller.
- Programmable Calibration and Service Interval Alerts – Configure alerts to indicate when service or calibration is due based on the number of cycles, or months, since the last service or calibration.
- Real Time Clock – For time and date stamping rundown information and other logged data.
- Graphing Capabilities – Track and monitor tightening strategies.
- Multiple Fastening Strategies – Program up to 32 parameter sets to handle 32 different torques and joint types.
- **CE** Compliant

CONTROL STRATEGIES (CW OR CCW)

- Torque Control (TC) – Provides target torque with high and low limits with simple pass or fail criteria for tightening threaded fasteners.
- Torque Control with Angle Monitoring (TC/AM) – Allows user to monitor angle, rotation, and detect any changes in the joint rate which would indicate process problems.
- Torque Monitoring with Angle Control (TM/AC) – Controls the amount of fastener rotation during tightening while also viewing applied torque.

MODEL	DESCRIPTION
IEC31W-110V	Field use controller for use with 110VAC input power
IEC31W-220V	Field use controller for use with 220VAC input power



iEC31W Model

ACCURATE

- Controlled tightening improves quality.
- Process controls ensure no missed fasteners, stripped threads, rehits or damaged threads.
- Reduces human error.
- Consistent torque control.
- No premature shut-off.

RELIABLE

- No guessing, just reliable and accurate bolting.
- Automatically set your torque and reduce operator error.
- No counting required.
- Collect and analyze your production data.

PRODUCTIVE

- Increased productivity means increased profits.
- Replace multiple conventional tools with one controlled system.
- Flexible



ACRADYNE® HT SERIES – PROGRAMMING

ToolWare is AcraDyne's software package designed specifically for AcraDyne® tools and controllers. Provided at no cost, this comprehensive, user-friendly program allows programming, analysis, and diagnostics via USB connection to any Windows® computer workstation. The software automatically detects the controller or can be used offline.

EASY PARAMETER SET-UP



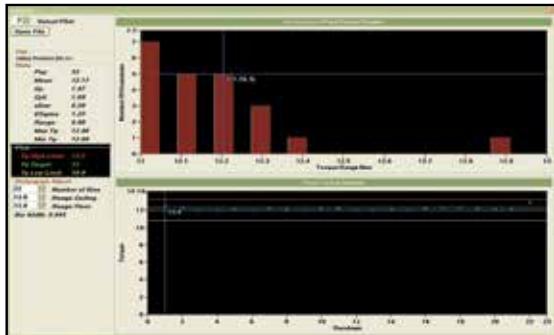
Adding and editing parameter sets is simple with ToolWare Intuitive Parameter Set-up Function.



AEC-CIM

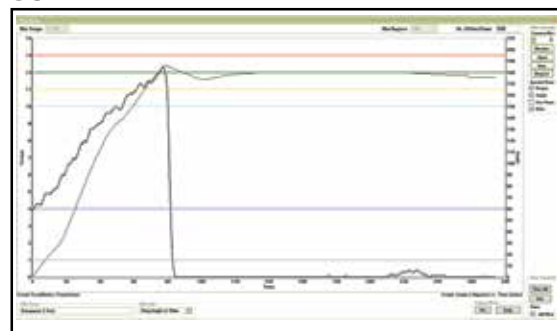
Interface module allows communication between a computer and an AcraDyne® controller through USB or CAN connections.

STATISTICS



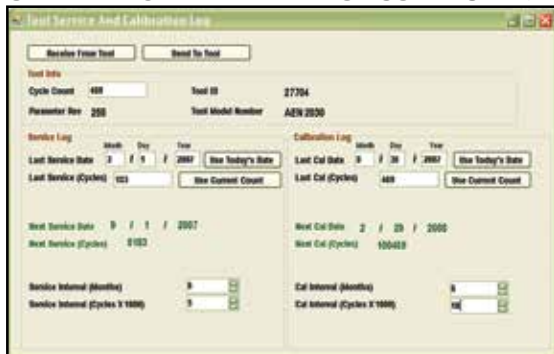
Vital statistics and rundown plots can be quickly viewed to assure the assembly process is being performed properly.

CURVEWARE™



With CurveWare™, fast access to torque and angle curves allows the tool and controller to be programmed for optimal performance on any application.

CALIBRATION MAINTENANCE SCHEDULING



Programmable intervals and alerts provide immediate notice that the tool and/or controller are in need of scheduled preventive maintenance or calibration.

Unmatched accuracy through precision engineering and design

FEATURES AND BENEFITS

AcraDyne's High Torque Pneumatic Bolting Tools offer a reliable and dependable solution for the installation and removal of heavy-duty fasteners in a variety of industries that require high torque capability, accuracy, power, and safety.

- Modular design allows for ease of maintenance.
- Motors and gearing are interchangeable.
- Durable and reliable gearbox.
- Proven air motor.
- Faster Free Speed.
- One-Hand Reverse.



AAP1B66600A



AAP1B76950A



AAP1B771800A



AAP1B885100A1



AFRL-4HTA



MODEL	TORQUE (Nm)	TORQUE (Ft-lb)	SPEED (rpm)	WEIGHT (lb)	SQUARE DR. (in)	AIR CONSUMPTION (CFM)
AAP1B66400A	400	300	70	9.75	3/4	22.9
AAP1B66600A	600	450	50	9.75	3/4	22.9
AAP1B66850A	850	625	36	9.75	1	22.9
AAP1B76950A	950	700	37	10.4	1	26.3
AAP1B771350A	1350	1000	22	10.4	1	26.3
AAP1B771800A	1800	1325	15	14.9	1	26.3
AAP1B772950A	2950	2175	9	14.9	1	26.3
AAP1B885100A1	5100	3775	7.5	23	1	31.5
AAP1B885100A	5100	3775	7.5	23	1-1/2	31.5



MANUAL PRESET TORQUE WRENCHES

FEATURES AND BENEFITS

- Easy-to-use preset wrenches for fastener torque auditing.
- Torque ranges from 5–340 Nm.
- User friendly, sleek, ergonomic design.
- Tactile feedback on achievement of preset torque.
- Proprietary adjustment tool guards against unauthorized setting changes.
- Wide range of interchangeable heads provide flexibility and convenience.
- +/- 3% accuracy when used in clockwise or counterclockwise directions.



Preset Wrenches*	Description
APTW-200	Auditor Preset Torque Wrench, 40-200Nm, Accepts 14mm Inserts
APTW-340	Auditor Preset Torque Wrench, 60-340Nm, Accepts 14mm Inserts

Ratchet and Square Drive Heads	Description
APTH-14RT50	Auditor Preset Torque Wrench Ratchet Insert, 1/2 SQ DR, 14mm
APTH-14RT34	Auditor Preset Torque Wrench Ratchet Insert, 3/4 SQ DR, 14mm
APTH-14SD50	Auditor Preset Torque Wrench SQ DR Insert, 1/2 SQ DR, 14mm

Open End Heads	Description
APTH-140E13	Auditor Preset Torque Wrench Insert 13mm OE, 14mm
APTH-140E14	Auditor Preset Torque Wrench Insert 14mm OE, 14mm
APTH-140E15	Auditor Preset Torque Wrench Insert 15mm OE, 14mm
APTH-140E16	Auditor Preset Torque Wrench Insert 16mm OE, 14mm
APTH-140E17	Auditor Preset Torque Wrench Insert 17mm OE, 14mm
APTH-140E18	Auditor Preset Torque Wrench Insert 18mm OE, 14mm
APTH-140E19	Auditor Preset Torque Wrench Insert 19mm OE, 14mm
APTH-140E21	Auditor Preset Torque Wrench Insert 21mm OE, 14mm
APTH-140E22	Auditor Preset Torque Wrench Insert 22mm OE, 14mm
APTH-140E24	Auditor Preset Torque Wrench Insert 24mm OE, 14mm
APTH-140E27	Auditor Preset Torque Wrench Insert 27mm OE, 14mm
APTH-140E30	Auditor Preset Torque Wrench Insert 30mm OE, 14mm
APTH-140E32	Auditor Preset Torque Wrench Insert 32mm OE, 14mm
APTH-140E34	Auditor Preset Torque Wrench Insert 34mm OE, 14mm
APTH-140E36	Auditor Preset Torque Wrench Insert 36mm OE, 14mm
APTH-140E38	Auditor Preset Torque Wrench Insert 38mm OE, 14mm
APTH-140E41	Auditor Preset Torque Wrench Insert 41mm OE, 14mm

DynaTorque **MANUAL TORQUE MULTIPLIERS**



FEATURES AND BENEFITS

Manual Torque Multipliers offer the perfect, economical solution to high torque bolting applications.

- Superior power to weight ratio.
- Delivered torque accuracy +/- 4%.
- Anti-Wind Up feature (2,800 NM models and up).
- True Torque Multiplication Ratios.
- Standard Reaction Arms supplied. Custom reaction arms/nose extensions available to suit specific applications.
- Replaces long lever arms and/or slugging wrenches.
- Manually powered – no external power source required.
- Value priced.
- No preventative maintenance required.
- Overload protected by Shear Drive design.

All DynaTorque Multipliers are supplied in a rugged, weather-resistant, portable carrying case.

MODEL	INPUT	OUTPUT	RATIO	MAX TORQUE OUTPUT	
	in	in		ft-lb	Nm
ATM-800	1/2	3/4	1:3.5	590	800
ATM-1800	3/4	1	1:3.6	1238	1800
ATM-2800	1/2	1	1:13	2066	2800
ATM-3800	3/4	1	1:13	2804	3800
ATM-5000	3/4	1.5	1:17	3690	5000
ATM-8000	3/4	1.5	1:49	5904	8000
ATM-12000	3/4	1.5	1:58	8856	12000
ATM-16000	3/4	2.5	1:75	11808	16000



AHCTS-5000



AHCTS-001K

AHCTS TEST STANDS FOR ROTATING TOOLS

Designed for testing tools with continuous rotating output spindles. The test stand includes a rundown fixture, bushing for side load support, reaction post or reaction paddles, transducer and torque analyzer display.

MODEL	DESCRIPTION
AHCTS-0500	3/4" Square Drive w/rundown fixture
AHCTS-1000	1" Square Drive w/rundown fixture
AHCTS-2500	1.5" Square Drive w/rundown fixture
AHCTS-5000	1.5" Square Drive w/rundown fixture
AHCTS-7500	1.5" Square Drive w/rundown fixture
AHCTS-5025*	1.5" Sq Dr dual station w/rundown fixture and reaction devices

*This stand has two transducers embedded into the base, one for rotary tools and one for hydraulic tools, and comes with rundown and reaction fixtures and one display.

**Please refer to the Test Stand Configurator in the Appendix C, page 88 for required ordering options.

Optional Pelican Case shown (ordered separately)



AHCTS-K STANDS

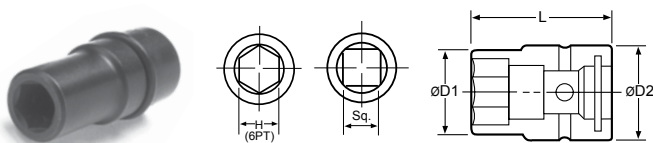
The AHCTS-K stands are specifically designed for hydraulic wrench testing. Hydraulic wrenches have very low profiles but very high torque output, therefore, working height must be minimized to prevent side loading which could lead to errors in data or damage to tool or reaction devices.

Either stand can be ordered with options such as extension legs, casters, embedded or attached torque analyzers with various rundown fixtures and reaction devices. Contact an AIMCO Customer Service Associate for additional information, 1-800-852-1368.

MODEL	DESCRIPTION
AHCTS-0.5K	3/4" Square Drive w/reaction device
AHCTS-001K	1" Square Drive w/reaction device
AHCTS-2.5K	1.5" Square Drive w/reaction device
AHCTS-005K	1.5" Square Drive w/reaction device
AHCTS-010K	1.5" Square Drive w/reaction device
AHCTS-025K	2" Square Drive w/reaction device

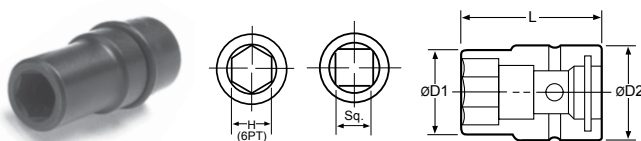
SOCKETS

IMPACT SOCKETS

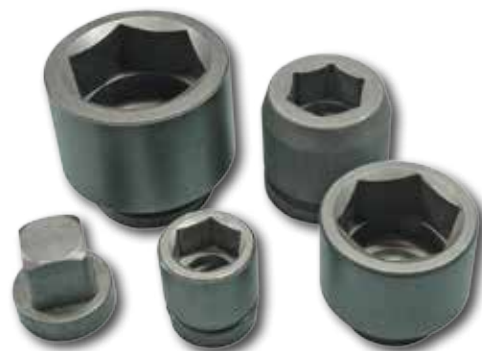


Part No.	Hex	D1	D1	D2	D2	L	L
		mm	in	mm	in	mm	in
3/4" Square Drive							
A611/16	11/16"	30	1.18	44	1.73	50	1.97
A63/4	3/4"	32	1.26	44	1.73	50	1.97
A613/16	13/16"	35	1.38	44	1.73	50	1.97
A614	14mm	24	0.95	38	1.50	55	2.17
A616	16mm	27	1.06	44	1.73	50	1.97
A617	17mm	30	1.18	38	1.50	55	2.17
3/4" Square Drive, Deep							
A611/16-4	11/16"	31	1.22	44	1.73	100	3.94
A63/4-4	3/4"	33	1.30	44	1.73	100	3.94
A613/16-4	13/16"	36	1.42	44	1.73	100	3.94
A617-4	17mm	31	1.22	44	1.73	100	3.94
A618-4	18mm	32	1.26	44	1.73	100	3.94
A619-4	19mm	33	1.30	38	1.50	100	3.94
1" Square Drive							
A87/8	7/8"	37	1.46	54	2.13	59	2.32
A815/16	15/16"	38	1.50	54	2.13	59	2.32
A81	1"	41	1.61	54	2.13	59	2.32
A817	17mm	31	1.22	50	1.97	63	2.48
A819	19mm	33	1.30	50	1.97	63	2.48
A821	21mm	37	1.46	50	1.97	63	2.48

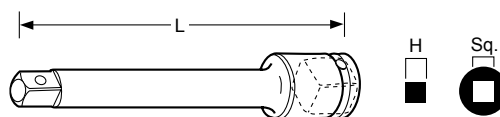
ERGO-DRIVE® SOCKETS



Part No.	HEX	D1	D1	D2	D2	L	L
		mm	in	mm	in	mm	in
3/4" Square Drive							
A61-1/8EDS	1-1/8"	44	1.73	44	1.73	64	2.52
A61-1/4EDS	1-1/4"	49	1.91	44	1.73	66	2.60
A61-1/2EDS	1-1/2"	57	2.24	44	1.73	68	2.68
A618EDS	18mm	31	1.22	44	1.73	60	2.36
A624EDS	24mm	40	1.52	40	1.73	65	2.36
1" Square Drive							
A815/16EDS	15/16"	38	1.50	54	2.13	69	2.72
A8100EDS	100mm	136	5.35	76	2.99	120	4.72

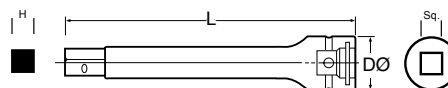


EXTENSIONS



Part No.	Square Drive	Hex	L	L	D	D
			mm	in	mm	in
A610E	3/4"	3/4"	100	3.94	44	1.73
A810E	1"	1"	102	4.02	54	2.13
A1220E	1-1/4"	1-1/4"	200	7.87	60	2.36
A1418E	1-1/2"	1-1/2"	178	7.01	84	3.31
A2426E	2-1/2"	2-1/2"	264	10.39	137	5.39

ERGO-DRIVE® EXTENSIONS



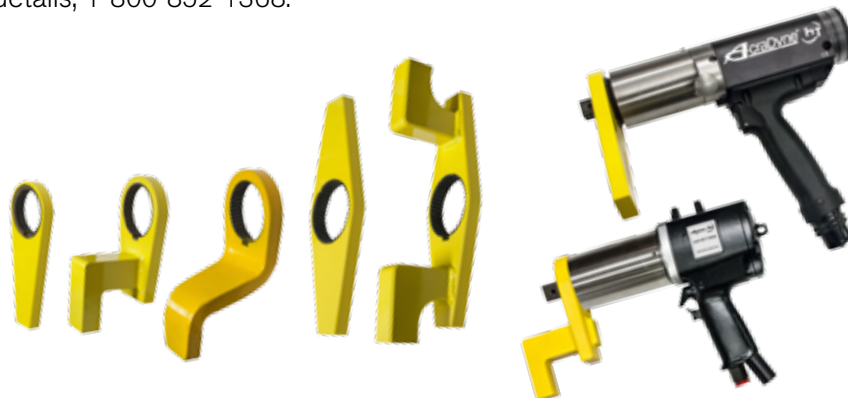
Part No.	SQ. DRIVE	H	L	L	D	D
			mm	in	mm	in
3/4" Square Drive						
A676EDE	3/4"	3/4"	76	2.99	40	1.58
A6100EDE	3/4"	3/4"	100	3.94	40	1.58
A6150EDE	3/4"	3/4"	150	5.91	40	1.58
A6200EDE	3/4"	3/4"	200	7.87	40	1.58
1" Square Drive						
A8150EDE	1"	1"	150	5.91	54	2.13
A8200EDE	1"	1"	200	7.87	54	2.13

A wide variety of sockets and extensions are available. Call 1-800-852-1368 for more information.

ACCESSORIES

REACTION BARS

Each tool includes a standard spline-attachment reaction device. Custom reaction devices are also available; contact your AIMCO Sales Representative for more details, 1-800-852-1368.



MODEL	DESCRIPTION
26810	Single Ended, Flat, 6000 Series
26815	Single Ended, 2.375" Offset, 6000 Series
26830	Double Ended, Flat, 6000 Series
26835	Double Ended, 2.375" Offset, 6000 Series
26885	Single Ended, 4.00" Offset, 6000 Series
26800	Single Ended, Flat, 7000 Series
27200	Single Ended, 3.10" Offset, 7000 Series
26820	Double Ended, Flat, 7000 Series
26825	Double Ended, 3.10" Offset, 7000 Series
26890	Single Ended, 4.00" Offset, 7000 Series
25277	Single Ended, flat, 8000 Series
25274	Single Ended, 3.35" offset, 8000 Series
25275	Single Ended, 4.00" offset, 8000 Series
25278	Double Ended, flat, 8000 Series
25276	Double Ended, 3.35" offset, 8000 Series
27255	Single Ended, flat, 9000 Series
26840	Single Ended, 3.35" offset, 9000 Series

ACCESSORIES

Custom accessories are also available for your application; contact your AIMCO Sales Representative for more details, 1-800-852-1368.



MODEL	DESCRIPTION
26477	Swivel Bail Assembly, 6000 Series
26478	Swivel "D" Handle Assembly, 6000 Series
26479	Stationary Bail Assembly, 6000 Series
26337	Rear Fixed Hoist Ring Sub-Assembly, 7000/8000 Series
26327	Swivel Bail Assembly, 7000 Series
26328	Swivel "D" Handle Assembly, 7000 Series
26336	Fixed Handle Sub-Assembly, 7000 Series
26337	Rear Fixed Hoist Ring Sub-Assembly, 7000 Series
25291	Swivel Handle, 8000 Series
25287	Swivel Bail Hoist, 8000 Series
25497	Rear fixed hoist ring, 8000 Series
25289	Fixed hoist (handle not included), 8000 Series
25280	Auxiliary Handle, 8000 Series
26822	Mounting Flange, 7000 Series
27045	Sliding Spindle, 7000 Series

CABLES

Newly designed cable and connectors provide excellent ergonomics, maximum-quality signal transfer, and full CE compliance.

MODEL	LENGTH
24330	3 meter
25350	5 meter
24320	10 meter



BREAKAWAY CABLE CONNECTOR

Ensures disconnect of cable should stress in excess of 40 lbs occur.



PROTECTIVE COVERS

Durable protective covers prevent marring and damage.

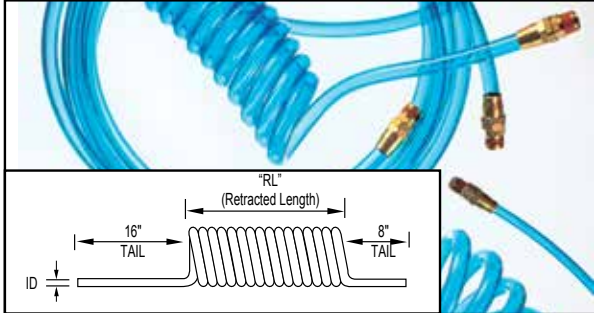
MODEL	DESCRIPTION
BJ10078	Protective Cover, 6000 Series
BJ10077	Protective Cover, 7000 Series
BJ10076	Protective Cover, 8000 Series



ACCESSORIES

AIR LINE

AIMCO AIR HOSE



- Durable Polyurethane or Rubber hose.
- Excellent recoil memory.
- Lightweight and flexible.
- Polyurethane available in transparent hose color (opaque available).
- Custom colors available.
- High chemical resistance.



Complete System Pack including nested FRL available. Check with your AIMCO representative for details, 1-800-852-1368.

SINGLE AIR HOSE ASSEMBLIES (COILED)

MODEL WORKING PRESSURE 100 PSI	DESCRIPTION (OD x ID x LENGTH)	RETRACTED LENGTH	NPT FITTINGS
ASH-500C-15MSZ	3/4" x 1/2" x 15'	13"	1/2"
ASH-500C-25MSZ	3/4" x 1/2" x 25'	23"	1/2"

SINGLE AIR HOSE (COILED) CUSTOM LENGTHS

Custom length coil assemblies and special colors are available in minimum order quantities.

STRAIGHT AIR HOSE (SOLD PER FOOT)

MODEL	DESCRIPTION
ASH-500Z	1/2" I.D.

- Assemblies include reusable swivel fitting.
- Burst pressure 428 PSI @ 68° F.
- Working temperature: -104° F to 175° F.
- Straight hose is available by the foot with, or without, hose fittings.
- Ask about full reel pricing. Call 1-800-852-1368.

AIR HOSE FITTINGS



PLUGS

MODEL	DESCRIPTION
28161	1/2" x 1/4" MPT
28162	1/2" x 3/8" MPT
28163	1/2" x 1/2" MPT
28164	1/2" x 1/2" FPT



QUICK-CHANGE COUPLERS

MODEL	DESCRIPTION
27768	1/2" FPT
27769	1/2" MPT



PROTECTIVE COUPLER

MODEL	DESCRIPTION
27771	Vinyl



BRASS FITTINGS

MODEL	CAPACITY
500-RZ	1/2" NPT Rigid Fitting
500-SZ	1/2" NPT Swivel Fitting

ACCESSORIES

AIR PREPARATION UNITS

FEATURES AND BENEFITS

- All models include L-mount bracket, gauge, and metal bowl shields.
- Polycarbonate filter and lubricator bowls (metal bowls standard on AFRL-8).
- 25-micron filter included on all models.
- Regulating range: 7 – 125 PSI
- Custom order upgrade items include metal bowl, 5 micron filter, semi-automatic filter drain, and reduced PSI range regulator. Contact an AIMCO sales representative at 800-852-1368 for more information.



AFRL-3
AFRL-4
AFRL-8



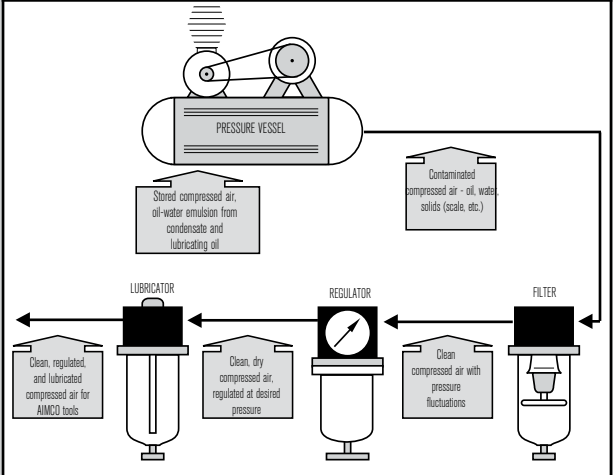
AFRL-3-C

MODEL	PORT	GAUGE PORT	FLOW RATE	BOWL SHIELD
AFRL-3	3/8"	1/4"	140 4,000	yes
AFRL-3-C	3/8"	1/4"	105 3,000	yes
AFRL-4	1/2"	1/4"	140 4,000	yes
AFRL-8	1"	1/4"	180 5,000	yes

DIM.	AFRL-3	AFRL-3-C	AFRL-4	AFRL-8
H	7.54 (191.5)	10.31 (261.9)	7.54 (191.5)	10.69 (271.5)
HB	1.57 (40.0)	1.57 (39.9)	1.57 (40.0)	1.97 (50.0)
HS	1.61 (40.9)	4.41 (112.0)	1.61 (40.9)	1.89 (48.0)
L	9.37 (238.0)	6.06 (153.9)	9.37 (238.0)	11.81 (300.0)
LS	3.31 (84.1)	3.03 (77.0)	3.31 (84.1)	4.13 (104.9)
TB	1.97 (50.0)	1.97 (50.0)	1.97 (50.0)	2.75 (69.9)
TG	2.58 (65.5)	2.58 (65.5)	2.58 (65.5)	2.97 (75.4)
TR	2.76 (70.1)	2.76 (70.1)	2.76 (70.1)	3.54 (89.9)

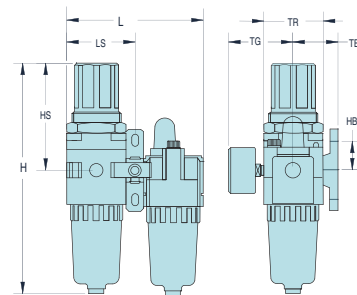
The supply of clean, dry air is essential to the operation of pneumatic powered tools. Use only clean filtered air for longer tool life. Provide proper airflow (CFM) and regulate air pressure (PSI) for optimum performance.

AIR PREPARATION UNITS: BASIC FUNCTIONS

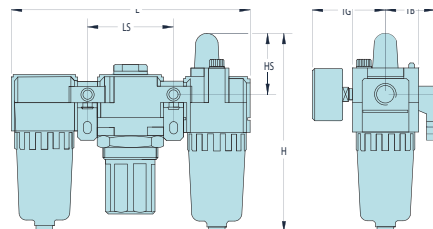


To determine unit size for application, you will need to know:

- Total air flow (CFM) required for application.
- Size of incoming air line.
- Size of air line required by tool.
- Air supply pressure (PSI).
- Allowable pressure drop.
- Does the application requires lubrication?
- Does the overall system have the required capacity?



AFRL-3-C



AFRL-3
AFRL-4
AFRL-8

APPLICATIONS - PARTIAL REFERENCES



PETROCHEM

.....

- Reactor
- Cracker
- Heat-Exchanger
- Valves, Pumps
- Compressors
- Heaters



COMPRESSOR STATION

.....

- Tie Rod
- Engines
- Compressors
- Turbines
- Pipe-Line
- Well Heads



STEEL MILL

.....

- Sintering
- Blast Furnace
- Hot Strip
- Cold Roll
- Central Machine
- Pipe Shop



WIND TURBINES

.....

- Tower Bolts
- Foundation Bolts
- Bearing Housing
- Shrink Disc
- Gear Mount
- Hub Bearing



OFFSHORE

.....

- Diesel Engine
- Mud Pump
- Crane
- Vessel Thruster
- Stacks



POWER

.....

- Steam Turbine
- Gas Turbine
- Hydro Turbine
- Comb. Cycle
- Valves, Pumps, Reactors, Pipes



MINING

.....

- Shovel & Drill
- Ball Mill
- Long-Wall
- Hoist
- Car Carrier



10000 SE Pine St.
Portland, Oregon 97216
Phone: 800-852-1368
www.aimco-global.com

AIMCO CORPORATION DE MEXICO SA DE CV

Ave. Cristobal Colon 14529
Chihuahua, Chihuahua. 31125
Mexico
Toll Free : (01-800) 801-1600
Direct : (01-614) 380-1010
Fax: (01-614) 380-1019

AIMCO CHINA

Room 607, No. 3998 Hongxin Rd,
Dibao Plaza, Minhang District,
Shanghai, 201103
China
Phone: 0086-21-34319246
Fax: 0086-21-34319245

AIMCO EUROPE

Avenida Río Gallo, 431
19174 Galápagos - Guadalajara
Spain
Phone: +34 673 34 99 25