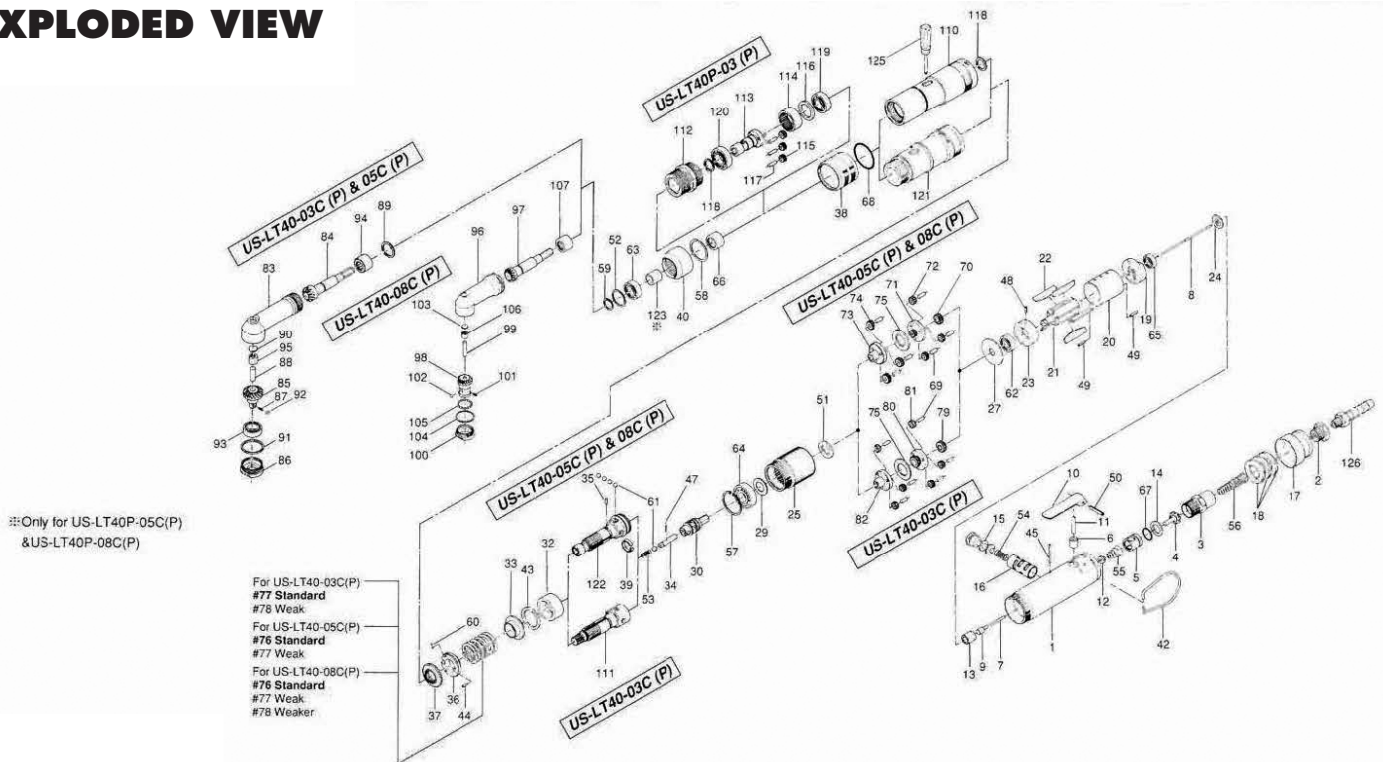


US-LT40-03C(P), -05C(P), & -08C(P) SCREWDRIVERS

EXPLODED VIEW



PARTS LIST — FOR REFERENCE ONLY

| Index Number | Part Number | Description | Qty. | Index Number | Part Number | Description | Qty. | Index Number | Part Number | Description | Qty. |
|--------------|-------------|----------------------------|------|------------------------------|-------------|----------------------------------|------|---|-------------|--|------|
| 1 | 461-025-6 | Casing | 1 | 51 | 975-106-0 | Spacer (18.5 x 11 x 1) | 1 | 87 | 976-346-0 | Spring (2.9 x 6.35) | 1 |
| 2 | 480-091-8 | Air Inlet Bushing | 1 | 52 | 975-768-0 | Adjusting Spacer (19 x 16.2 x 1) | 1 | 88 | 972-216-0 | Roller Pin (6 x 16) | 1 |
| 3 | 461-097-6 | Air Inlet Connector | 1 | 53 | 976-058-0 | Spring (4.5 x 11) | 1 | 89 | 975-113-0 | Spacer (19 x 15 x 1.5) | 1 |
| 4 | 259-100-0 | Valve | 1 | 54 | 976-147-0 | Spring (7 x 12) | 1 | 90 | 975-593-0 | Round Plate (10 x 1) | 1 |
| 5 | 461-102-6 | Valve Bushing | 1 | 55 | 977-071-0 | Cone Spring (5.5 x 11.5 x 15) | 1 | 91 | 975-787-0 | Adjusting Spacer (26 x 24 x 1) | 1 |
| 6 | 553-103-1 | Valve Rod Bushing | 1 | 56 | 977-155-0 | Cone Spring (7 x 10 x 35) | 1 | 92 | 981-002-0 | Ball (1/8) | 1 |
| 7 | 970-108-0 | Pin (H) (2 x 26.8) | 1 | 57 | 979-326-0 | Inner Snap Ring (IRTW-26) | 1 | 93 | 982-870-0 | Ball Bearing (6801) | 1 |
| 8 | 463-104-7 | Valve Rod | 1 | 58 | 979-190-0 | Outer Snap Ring (22) | 1 | 94 | 988-008-0 | Needle Roller Bearing NK10 | 1 |
| 9 | 444-106-8 | Valve Rod Cap | 1 | 59 | 979-351-0 | Inner Snap Ring (ISTW-10) | 1 | 95 | 988-380-0 | Needle Roller Bearing (F68) | 1 |
| 10 | 700-107-1 | Valve Lever | 1 | 60 | 981-001-0 | Ball (3/32) | 2 | For US-LT40-08C(P) | | | |
| 11 | 461-114-6 | Valve Pin | 1 | 61 | 981-004-0 | Ball (3/16) | 5 | 96 | 469-441-7 | Angle Casing | 1 |
| 12 | 259-254-0 | Shut-off Valve | 1 | 62 | 982-063-0 | Ball Bearing (606ZZ) | 1 | 97 | 469-420-5 | Driving Gear | 1 |
| 13 | 461-567-6 | Bushing | 1 | 63 | 982-035-0 | Ball Bearing (698) | 1 | 98 | 469-430-8 | Driven Gear (P) | 1 |
| 14 | 996-424-0 | Packing (16 x 9 x 2) | 1 | 64 | 982-100-0 | Ball Bearing (6000) | 1 | 99 | 469-431-6 | Driven Gear Spindle | 1 |
| 15 | 893-057-1 | Reverse Valve Lock | 1 | 65 | 987-039-0 | Mini Ball Bearing (R1560ZZ) | 1 | 100 | 469-488-5 | Angle Head Casing Cover | 1 |
| 16 | 472-211-7 | Reverse Valve Bushing | 1 | 66 | 988-394-0 | Needle Roller Bearing (1210) | 1 | 101 | 976-346-0 | Spring (2.9 x 6.35) | 1 |
| 17 | 472-782-7 | Exhaust Deflector | 1 | 67 | 990-911-0 | O-Ring (SNS-12) | 1 | 102 | 981-002-0 | Ball (1/8) | 1 |
| 18 | 161-835-4 | Filter (K-50) | 3 | 68 | 990-923-0 | O-Ring (SNS-26) | 1 | 103 | 975-590-0 | Round Plate (6.3 x 1) | 1 |
| 19 | 467-285-7 | Rear Plate | 1 | 76 | 976-515-0 | Spring (22.7 x 28) | 1 | 104 | 975-771-0 | Adjusting Spacer (20 x 18 x 1) | 1 |
| 20 | 472-286-7 | Cylinder | 1 | 77 | 976-516-0 | Spring (22.1 x 28) | 1 | 105 | 981-000-0 | Ball (1/16) | 26 |
| 21 | 472-287-7 | Rotor | 1 | 78 | 976-517-0 | Spring (21.5 x 31) | 1 | 106 | 988-090-0 | Needle Roller Bearing (B-24) | 1 |
| 22 | 425-288-4 | Blade Repair Kit Component | 5 | GEAR SECTION | | | | 107 | 469-421-5 | Bushing | 1 |
| 23 | 472-289-7 | Front Plate | 1 | For US-LT40-03C(P) | | | | PARTS FOR US-LT40-03C(P) | | | |
| 24 | 461-291-6 | Rear Plate Spacer | 1 | 69 | 972-089-0 | Roller Pin (3 x 8) | 6 | 110 | 461-369-7 | Clutch Casing | 1 |
| 25 | 472-029-7 | Gear Casing | 1 | 75 | 496-483-1 | Gear Cage Spacer | 1 | 111 | 461-654-7 | Cam Guide | 1 |
| 27 | 472-807-7 | Spacer | 1 | 79 | 472-460-5 | Rotor Gear | 1 | 112 | 461-082-8 | Connecting Screw | 1 |
| 29 | 461-344-6 | Cam Retainer | 1 | 80 | 472-480-5 | First Gear Cage | 1 | 113 | 462-319-9 | Anvil | 1 |
| 30 | 472-346-5 | Cam | 1 | 81 | 472-470-5 | First Planet Gear | 6 | 114 | 462-466-9 | Second Internal Gear | 1 |
| 32 | 472-375-7 | Cam Ring | 1 | 82 | 472-485-5 | Second Gear Cage | 1 | 115 | 462-471-9 | Second Internal Gear Second Planet Gear3 | 1 |
| 33 | 472-379-8 | Retainer | 1 | For US-LT40-05C(P) & -08C(P) | | | | 116 | 462-487-9 | Second Gear Cage Spacer | 1 |
| 34 | 471-318-5 | Pilot Pin | 1 | 69 | 972-089-0 | Roller Pin (3 x 8) | 6 | 117 | 972-090-0 | Roller Pin (3 x 10) | 3 |
| 35 | 471-764-7 | Notch Pin | 1 | 70 | 472-460-7 | Rotor Gear | 1 | 118 | 979-353-0 | Inner Snap Ring (ISTW-12) | 2 |
| 36 | 472-562-8 | Spring Holder | 1 | 71 | 472-480-7 | First Gear Cage | 1 | 119 | 982-901-0 | Ball Bearing (6900) | 1 |
| 37 | 472-257-8 | Regulating Screw | 1 | 72 | 472-470-7 | First Planet Gear | 3 | 120 | 982-902-0 | Ball Bearing (6901) | 1 |
| 38 | 472-370-7 | Clutch Casing Sleeve | 1 | 73 | 472-485-7 | Second Gear Cage | 1 | PARTS FOR US-LT40-05C(P) & -08C(P) | | | |
| 39 | 471-670-7 | Band | 1 | 74 | 472-471-7 | Second Planet Gear | 3 | 121 | 461-369-8 | Clutch Casing | 1 |
| 40 | 469-081-6 | Locking Nut | 1 | 75 | 496-483-1 | Gear Cage Spacer | 1 | 122 | 472-319-7 | Anvil | 1 |
| 42 | 010-790-1 | Suspension Ring | 1 | ANGLE HEAD SECTION | | | | 123 | 469-807-5 | Spacer | 1 |
| 43 | 944-019-0 | Back-up Ring (P-19) | 1 | For US-LT40-03C(P) & -05C(P) | | | | ACCESSORIES | | | |
| 44 | 970-092-0 | Pin (H) (2 x 5.5) | 1 | 83 | 461-441-8 | Angle Casing | 1 | 125 | 939-402-0 | Manual Driver (No 2) | 1 |
| 45 | 970-105-0 | Pin (H) (2 x 24) | 1 | 84 | 461-420-7 | Driving Gear | 1 | | | | |
| 47 | 969-470-0 | Pin (2 x 8) | 1 | 85 | 461-430-8 | Driven Gear(P) | 1 | | | | |
| 48 | 973-006-0 | Roll Pin (2 x 6) | 1 | 86 | 461-488-7 | Angle Head Casing Cover | 1 | | | | |
| 49 | 973-010-0 | Roll Pin (2 x 1D) | 2 | | | | | | | | |
| 50 | 973-118-0 | Roll Pin (3 x 18) | 1 | | | | | | | | |



10000 SE PINE
PORTLAND, OR 97216
503-254-6600
FAX 503-255-2615

When ordering spare parts, please specify tool type, part number, and description.

FOOTNOTES