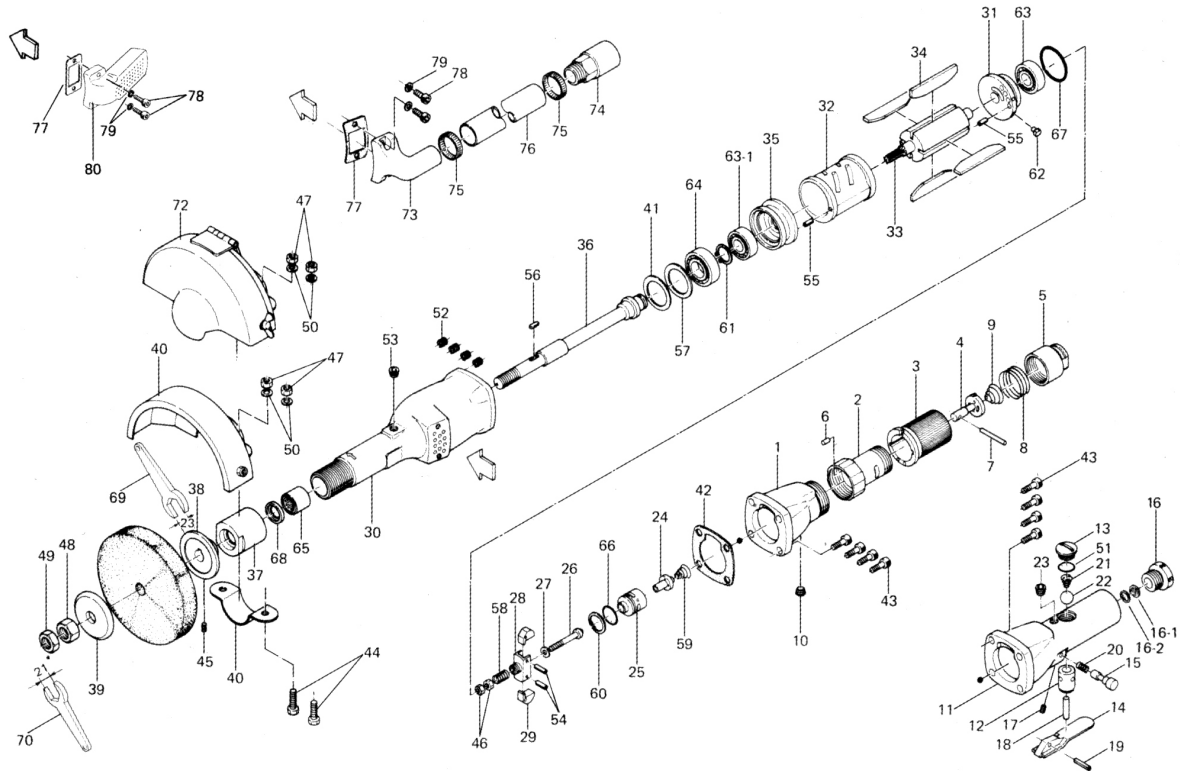


# UG-1250-72 & UG-1250L-72 HORIZONTAL GRINDERS

## EXPLODED VIEW



### PARTS LIST — FOR REFERENCE ONLY

Index Number	Part Number	Description	Qty.	Index Number	Part Number	Description	Qty.	Index Number	Part Number	Description	Qty.
<b>542-003-0 UG-1250 Handle Body Assembly</b>				<b>564-003-4 UG-1250L Handle Body Assembly</b>				<b>UG-1250 Series Common Parts</b>			
1	542-012-0	Casing Cover	1	11	564-014-5	Handle Body	1	24	535-170-3	Governor Valve	1
2	542-014-0	Handle Body	1	12	566-101-4	Valve Bushing	1	25	564-171-2	Governor Valve Bushing	1
3	566-015-1	Valve Handle	1	13	566-108-4	Valve Plug	1	26	542-894-0	Governor Spindle	1 ●
4	566-100-1	Valve	1	14	566-107-5	Valve Lever	1				
5	591-091-1	Air Inlet Bushing	1	15	578-765-2	Safety Pin	1				
6	970-308-0	Pin (H) (4 x 8)	1	16	592-091-2	Air Inlet Bushing	1				
7	971-273-0	Pin (3.8 x 34)	1	16-2	975-084-0	Spacer (17 x 14 x 1)	1				
8	976-720-0	Spring (33.8 x 1.5)	1	17	953-104-0	Allen Head Flat Point Screw (M4 x 4)	1				
9	977-165-0	Cone Spring (7 x 22 x 12)	1	18	970-427-0	Pin (H)(5 x 25)	1				
10	966-100-0	Allen Head Plug (1/8)	1	19	973-174-0	Roll Pin (3.5 x 24)	1				
				20	976-114-0	Spring (6 x 18)	1				
				21	977-254-0	Cone Spring (10 x 15 x 16)	1				
				22	981-033-0	Ball (1/2)	1				
				23	966-100-0	Allen Head Plug (1/8)	1				
				51	990-914-0	O-Ring (SNS-16)	1				
27	525-179-1	Governor Spindle Spacer	1								
28	564-181-1	Governor Cage	1 ●								
29	564-183-1	Governor Weight	1 ●								
30	542-025-0	Casing	1								
31	566-285-1	Rear Plate	1								
32	568-286-1	Cylinder	1								
33	566-287-1	Rotor	1								
34	568-288-1	Blade	4								
35	566-289-1	Front Plate	1								
36	542-390-0	Wheel Spindle	1								
37	542-065-0	Casing Front Plate	1								
38	529-393-1	Wheel Holder Flange	1								
39	529-394-1	Wheel Nut Flange	1								
40	529-770-1	Wheel Guard	1								
41	996-471-0	Packing (40 x 30 x 2)	1								
42	566-852-1	Handle Body Packing	1								
43	945-116-0	Allen Head Bolt (M5 x 16)	4								
44	946-903-0	Hexagon Head Bolt (M6 x 18)	2								
45	953-210-0	Allen Head Flat Point Screw (M5 x 10)	1								
46	960-021-0	Hexagon Nut (1-M3)	2 ●								
47	960-041-0	Hexagon Nut (1-M6)	2								
48	960-404-0	Hexagon Nut (1-UNC 1/2-13)	1								
49	960-405-0	Hexagon Nut (3-UNC 1/2-13)	1								
50	962-009-0	Spring Washer (2-6S)	2								
52	965-011-0	Heli-Sert (M5 x 1.5D)	4								
53	966-100-0	Allen Head Plug (1/8)	1								
54	973-116-0	Roll Pin (3 x 16)	2 ●								
55	973-160-0	Roll Pin (3.5 x 10)	2								
56	974-112-0	Key (4 x 12)	1								
57	975-300-0	Spacer (40 x 30 x 1)	1								
58	976-077-0	Spring (5x18) (0.7) N14	1 ●								
59	977-135-0	Cone Spring (6.6 x 18 x 20)	1								
60	979-015-0	Inner Snap Ring (22)	1								
61	979-114-0	Outer Snap Ring (17)	1								
62	980-008-0	Round Head Notch (2.4)	1								
63	982-201-0	Ball Bearing (6201)	1								
63-1	982-241-0	Ball Bearing (6201Z)	1								
64	982-203-0	Ball Bearing (6203)	1								
65	988-019-0	Needle Roller Bearing (NK 16/20)	1								
66	990-918-0	O-Ring (SNS-20)	1								
67	990-927-0	O-Ring (SNS-34)	1								
68	995-002-0	Oil Seal (G16 x 24 x 3)	1								
<b>STANDARD ACCESSORIES</b>											
Standard Accessories											
69	936-053-0	Spanner (23 x 5 x 195)	1								
70	936-521-0	Spanner (21)	1								
<b>OPTIONAL ACCESSORIES</b>											
72	542-895-0	Wheel Guard Assembly (Hinge Type)	1								
<b>542-885-0 Tube Silencer Assembly</b>											
73	542-784-0	Exhaust Deflector Cover Flange	1								
74	542-042-0	Silencer	1								
75	931-100-0	Hose Band	2								
76	935-300-0	Vinyl Hose (19 x 23 x 1M)	1								
77	542-777-0	Packing	1								
78	945-112-0	Allen Head Bolt (M5 x 12)	2								
79	962-008-0	Spring Washer 2-S5	2								
<b>542-897-0 Box Silencer Assembly</b>											
80	542-782-0	Silence Flange	1								
77	542-777-0	Packing	1								
78	945-112-0	Allen Head Bolt (M5 x 12)	2								
79	962-008-0	Spring Washer 2-S5	2								

### FOOTNOTES

● = Governor Cage Assembly Components



10000 SE PINE  
PORTLAND, OR 97216  
503-254-6600  
FAX 503-255-2615

When ordering spare parts, please specify  
tool type, part number, and description.